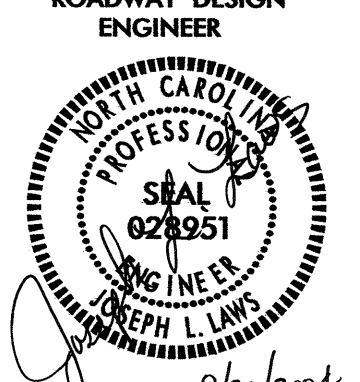
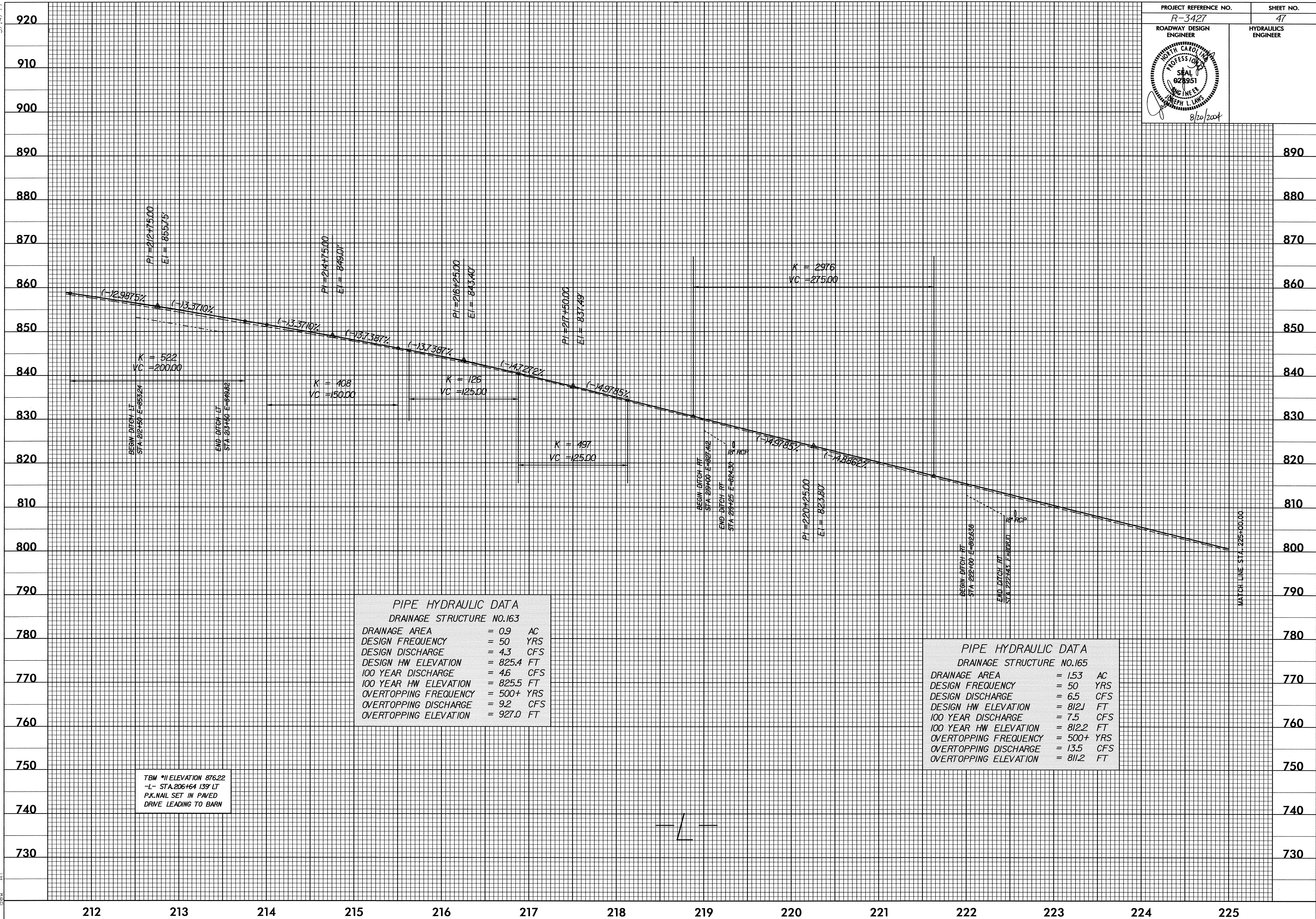


5/14/99

PROJECT REFERENCE NO. R-3427	SHEET NO. 47
ROADWAY DESIGN ENGINEER	HYDRAULICS ENGINEER
	
8/20/2004	



PIPE HYDRAULIC DATA	
DRAINAGE STRUCTURE NO.163	
DRAINAGE AREA	= 0.9 AC
DESIGN FREQUENCY	= 50 YRS
DESIGN DISCHARGE	= 4.3 CFS
DESIGN HW ELEVATION	= 825.4 FT
100 YEAR DISCHARGE	= 4.6 CFS
100 YEAR HW ELEVATION	= 825.5 FT
OVERTOPPING FREQUENCY	= 500+ YRS
OVERTOPPING DISCHARGE	= 9.2 CFS
OVERTOPPING ELEVATION	= 927.0 FT

PIPE HYDRAULIC DATA	
DRAINAGE STRUCTURE NO.165	
DRAINAGE AREA	= 1.53 AC
DESIGN FREQUENCY	= 50 YRS
DESIGN DISCHARGE	= 6.5 CFS
DESIGN HW ELEVATION	= 812.1 FT
100 YEAR DISCHARGE	= 7.5 CFS
100 YEAR HW ELEVATION	= 812.2 FT
OVERTOPPING FREQUENCY	= 500+ YRS
OVERTOPPING DISCHARGE	= 13.5 CFS
OVERTOPPING ELEVATION	= 811.2 FT

TBM #11 ELEVATION 876.22
 -L- STA.206+64 139 LT
 P.K.NAIL SET IN PAVED
 DRIVE LEADING TO BARN

20-AUG-2004 11:03
 C:\Users\jlaw\Documents\Projects\3427\p3427.dwg
 jlaw