

NOTES

ALL PRESTRESSING STRANDS SHALL BE 7-WIRE LOW-RELAXATION GRADE 270 STRANDS AND SHALL CONFORM TO AASHTO M203 EXCEPT FOR SAMPLING REQUIREMENTS WHICH SHALL BE IN ACCORDANCE WITH THE STANDARD SPECIFICATIONS.

TIE ROD ASSEMBLY SHALL BE AASHTO M270 GRADE 36 STRUCTURAL STEEL.

APPLY EPOXY PROTECTIVE COATING TO END OF GIRDER SURFACES. INDICATED IN ELEVATION VIEW. FOR EPOXY PROTECTIVE COATING, SEE SPECIAL PROVISIONS.

EMBEDDED PLATE "B-1" SHALL BE GALVANIZED IN ACCORDANCE WITH THE STANDARD SPECIFICATIONS. BEVEL EDGES OF PLATE "B-1" TO GIVE CLOSE FIT BUT NOT TIGHT FIT TO STEEL CASTING FORM.

ANCHOR STUDS SHALL CONFORM TO AASHTO M169 GRADES 1010 THROUGH 1020 OR APPROVED EQUAL, AND SHALL MEET THE TYPE "B" REQUIREMENTS OF SUBSECTION 7.3 OF THE ANSI/AASHTO/AWS D1.5 BRIDGE WELDING CODE.

AT ENDS OF GIRDERS TO BE EMBEDDED IN CONCRETE DIAPHRAGMS, PRESTRESSING STRANDS MAY EXTEND A MAXIMUM OF 2" BEYOND THE GIRDER ENDS. OTHERWISE, PRESTRESSING STRANDS SHALL BE CUT FLUSH WITH THE GIRDER ENDS.

THE TRANSFER OF LOAD FROM THE ANCHORAGES TO THE GIRDER SHALL BE DONE WHEN CONCRETE HAS REACHED A COMPRESSIVE STRENGTH OF NOT LESS THAN 4000 PSI FOR SPAN "A" AND SPAN "C", AND AND NOT LESS THAN 4500 PSI FOR SPAN "B".

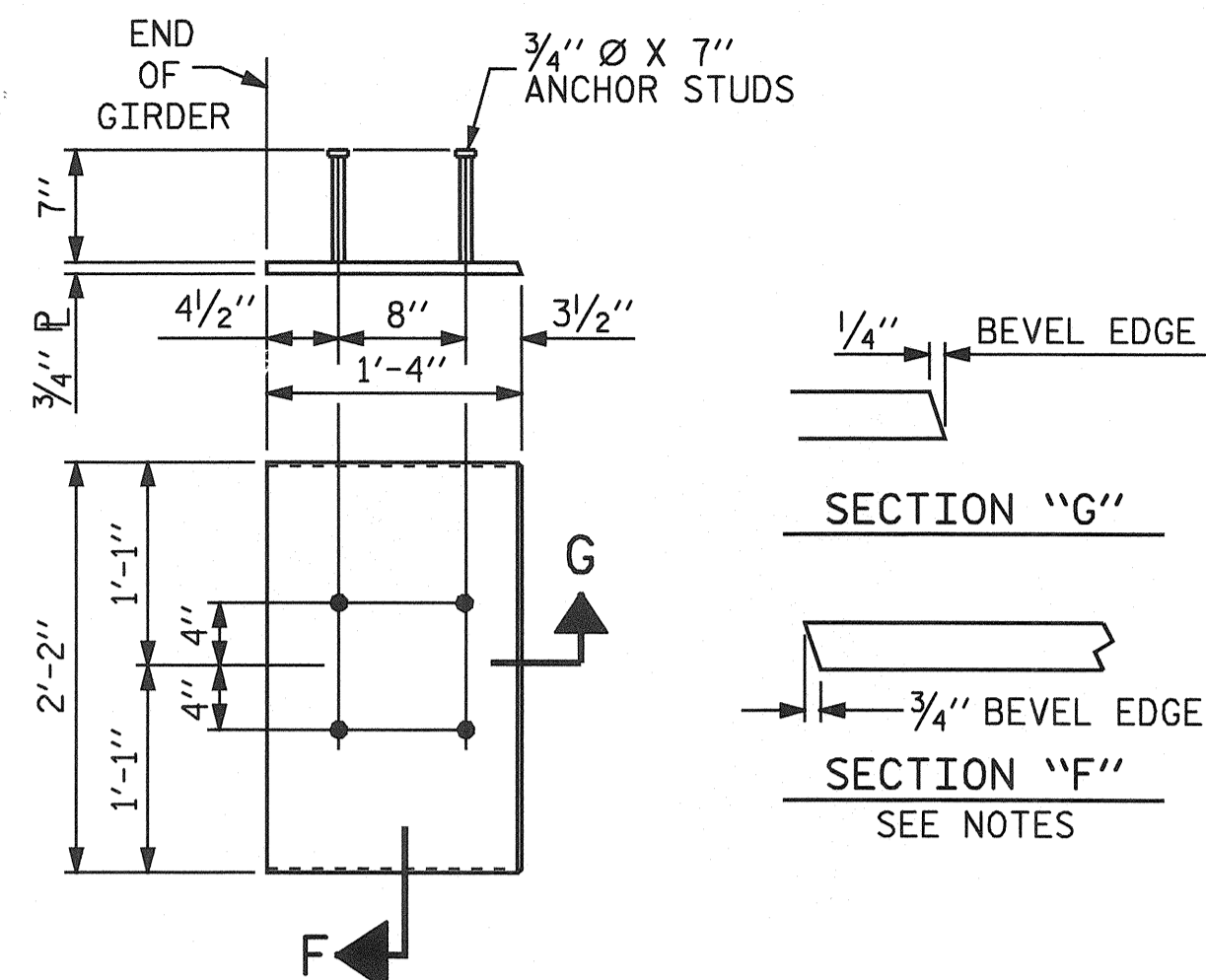
DEPENDING ON THE TYPE OF SYSTEM USED TO SUPPORT THE DECK SLAB FORMS, PRESET ANCHORS MAY BE NECESSARY IN THE PRESTRESSED CONCRETE GIRDER.

THE TOP SURFACE OF THE GIRDER, EXCLUDING THE OUTSIDE 4", SHALL BE RAKED TO A DEPTH OF 1/4".

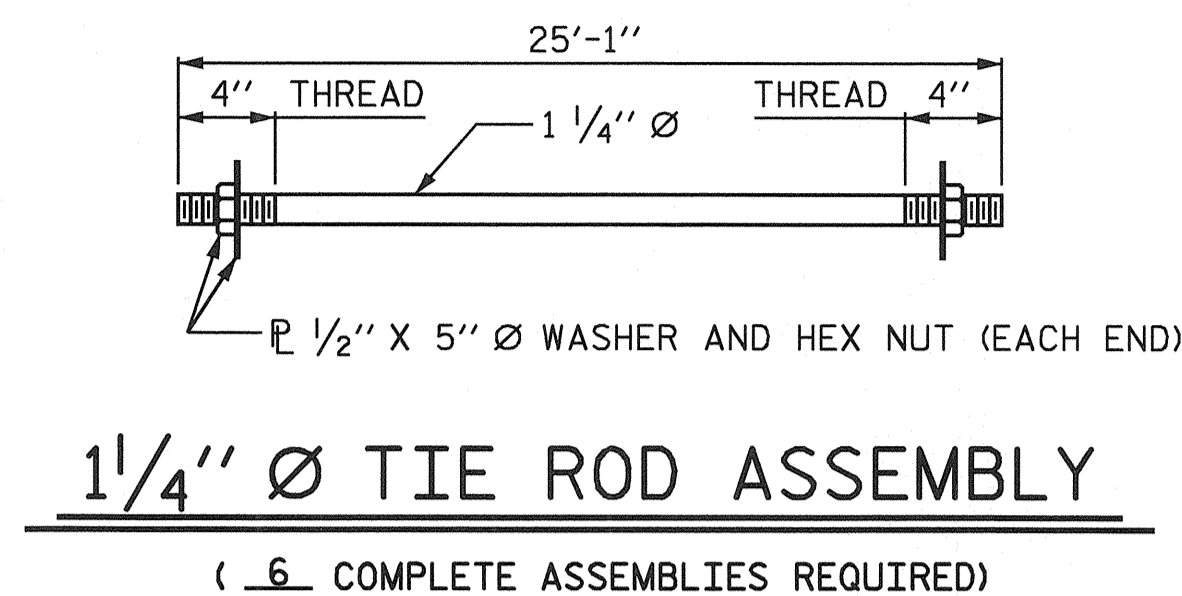
FOR VERTICAL CRACKS IN PRESTRESSED CONCRETE GIRDERS PRIOR TO DETENSIONING, SEE SPECIAL PROVISIONS.

FOR PRESTRESSED CONCRETE MEMBERS, SEE SPECIAL PROVISIONS.

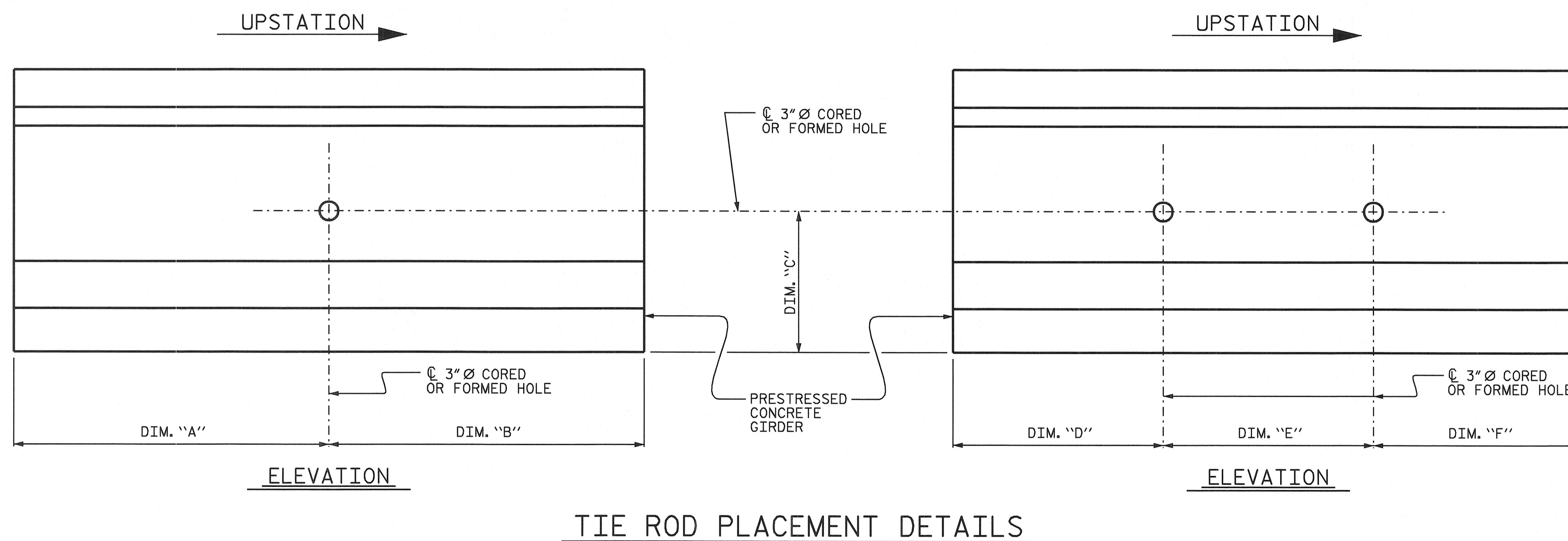
ALL REINFORCING STEEL SHALL BE GRADE 60.



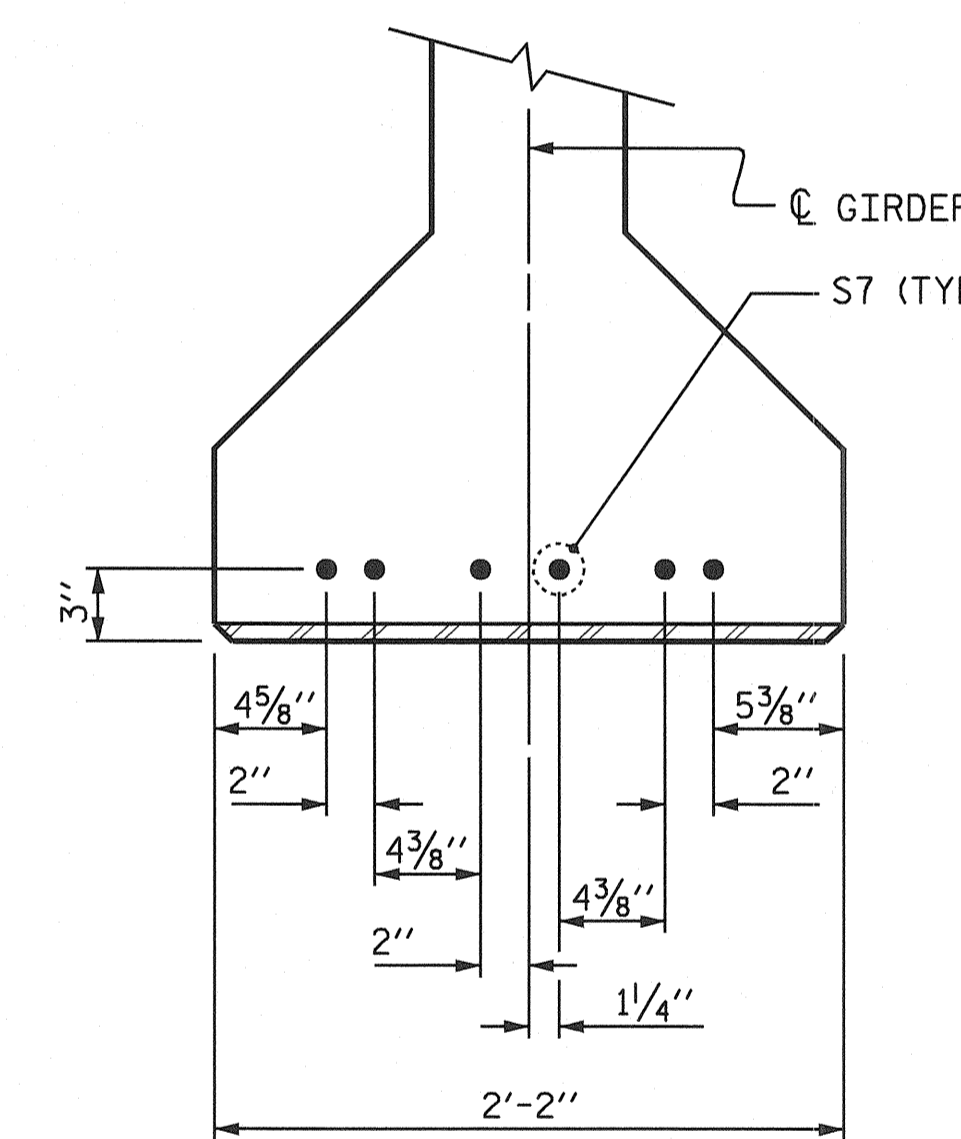
EMBEDDED PLATE "B-1" DETAILS FOR AASHTO TYPE IV GIRDER
(2 REQ'D PER GIRDER)



1 1/4" Ø TIE ROD ASSEMBLY
(6 COMPLETE ASSEMBLIES REQUIRED)



TIE ROD PLACEMENT DETAILS



DETAIL "A"
(FOR AASHTO TYPE IV GIRDERS)



TIE ROD PLACEMENT TABLE																				
SPAN "A"							SPAN "B"							SPAN "C"						
	DIM. "A"	DIM. "B"	DIM. "C"	DIM. "D"	DIM. "E"	DIM. "F"		DIM. "A"	DIM. "B"	DIM. "C"	DIM. "D"	DIM. "E"	DIM. "F"		DIM. "A"	DIM. "B"	DIM. "C"	DIM. "D"	DIM. "E"	DIM. "F"
GIRDER A1	30'-1/4"	33'-1/4"	2'-3"	—	—	—	GIRDER B1	38'-1"	41'-1"	2'-3"	—	—	—	GIRDER C1	30'-1/4"	33'-1/4"	2'-3"	—	—	—
GIRDER A2	30'-1/4"	33'-1/4"	2'-3"	—	—	—	GIRDER B2	38'-1"	41'-1"	2'-3"	—	—	—	GIRDER C2	30'-1/4"	33'-1/4"	2'-3"	—	—	—
GIRDER A3	30'-1/4"	33'-1/4"	2'-3"	—	—	—	GIRDER B3	38'-1"	41'-1"	2'-3"	—	—	—	GIRDER C3	30'-1/4"	33'-1/4"	2'-3"	—	—	—
GIRDER A4	—	—	2'-3"	30'-1/4"	3'-0"	30'-1/4"	GIRDER B4	—	—	2'-3"	38'-1"	3'-0"	38'-1"	GIRDER C4	—	—	2'-3"	30'-1/4"	3'-0"	30'-1/4"
GIRDER A5	33'-1/4"	30'-1/4"	2'-3"	—	—	—	GIRDER B5	41'-1"	38'-1"	2'-3"	—	—	—	GIRDER C5	33'-1/4"	30'-1/4"	2'-3"	—	—	—
GIRDER A6	33'-1/4"	30'-1/4"	2'-3"	—	—	—	GIRDER B6	41'-1"	38'-1"	2'-3"	—	—	—	GIRDER C6	33'-1/4"	30'-1/4"	2'-3"	—	—	—
GIRDER A7	33'-1/4"	30'-1/4"	2'-3"	—	—	—	GIRDER B7	41'-1"	38'-1"	2'-3"	—	—	—	GIRDER C7	33'-1/4"	30'-1/4"	2'-3"	—	—	—

PROJECT NO. R-3427
YADKIN COUNTY
 STATION: 236+73.00 -L-

STATE OF NORTH CAROLINA
 DEPARTMENT OF TRANSPORTATION
 RALEIGH
 PRESTRESSED CONCRETE GIRDER
 CONTINUOUS FOR LIVE LOAD
 DETAILS

DRAWN BY: P.C. BREWER DATE: 6/12/03
 CHECKED BY: S.B. WILLIAMS DATE: 6/26/03

13-AUG-2004 12:07
 W:\squad\427\str1\pbrewer\Microstation\R3427_sd_GL.01.dgn
 tbeach

REVISIONS						SHEET NO.
NO.	BY:	DATE:	NO.	BY:	DATE:	S-12
1			3			TOTAL SHEETS
2			4			31