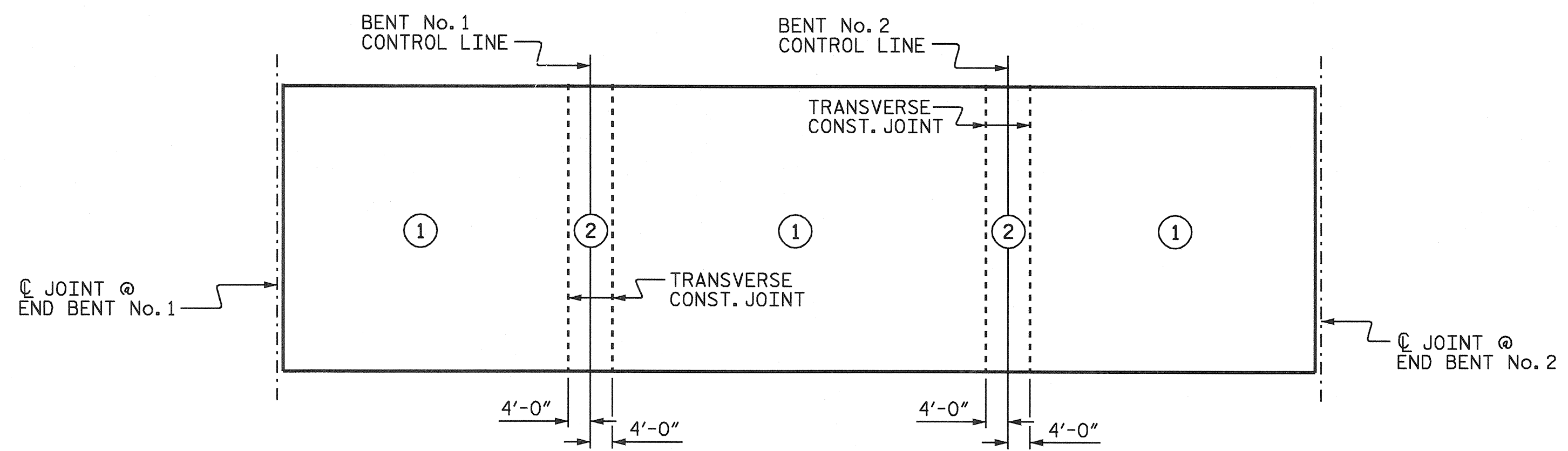
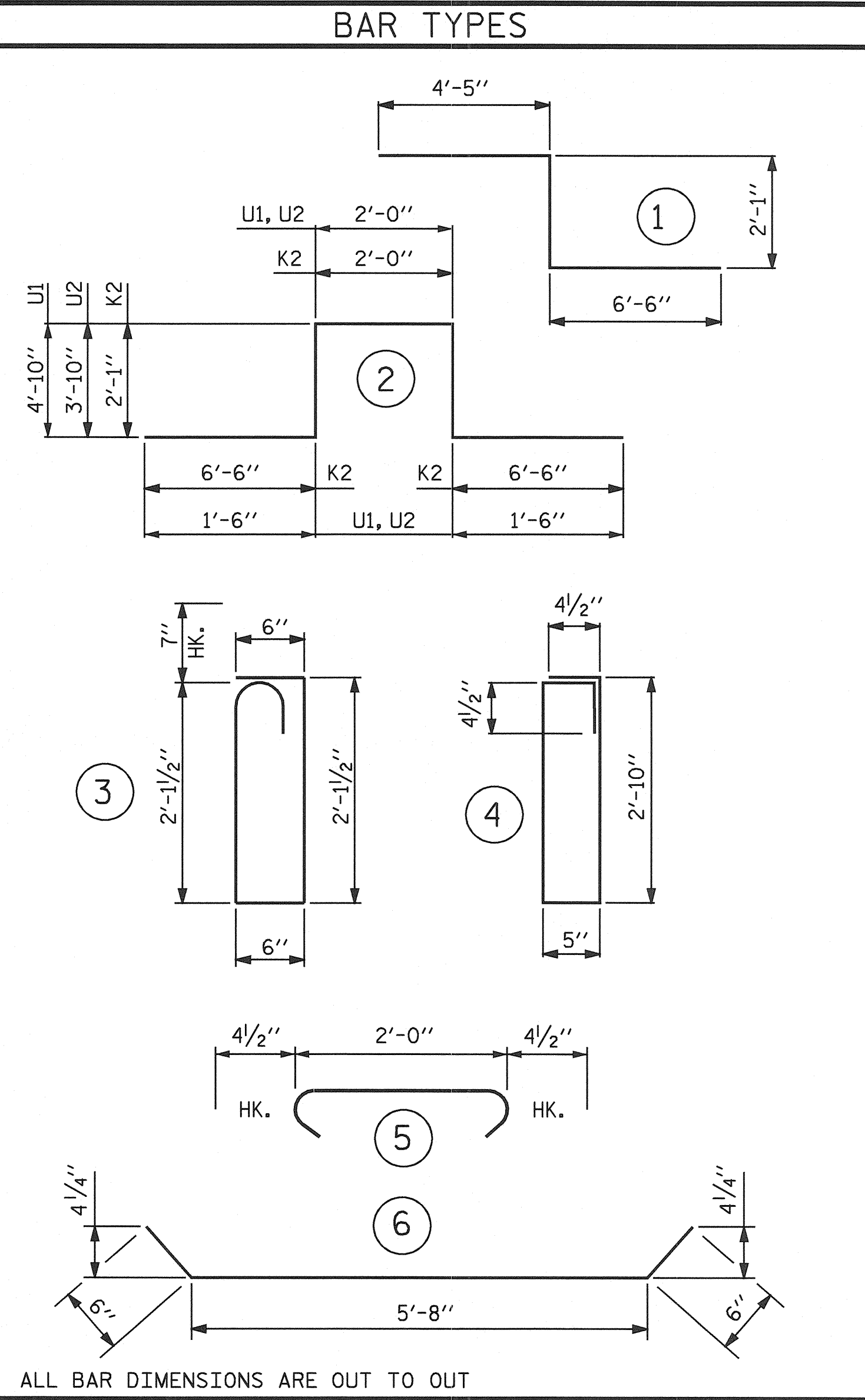


GROOVING BRIDGE FLOORS	
APPROACH SLABS	2,335.7 SQ.FT.
BRIDGE DECK	10,122.6 SQ.FT.
TOTAL	12,458.3 SQ.FT.

SUPERSTRUCTURE REINFORCING STEEL LENGTHS ARE BASED ON THE FOLLOWING MINIMUM SPLICE LENGTHS

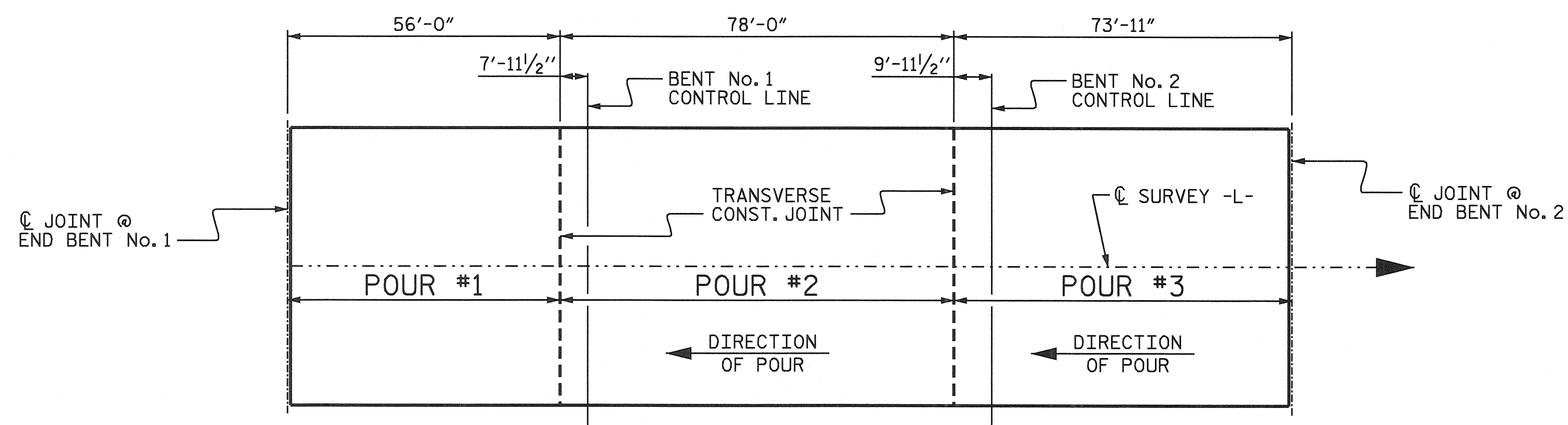
BAR SIZE	SUPERSTRUCTURE EXCEPT APPROACH SLABS, PARAPET, AND BARRIER RAIL		APPROACH SLABS		PARAPET AND BARRIER RAIL
	EPOXY COATED	UNCOATED	EPOXY COATED	UNCOATED	
#4	2'-0"	1'-9"	2'-0"	1'-9"	2'-9"
#5	2'-6"	2'-2"	2'-6"	2'-2"	3'-5"
#6	3'-0"	2'-7"	3'-10"	2'-7"	4'-4"
#7	5'-3"	3'-6"	—	—	—
#8	6'-10"	4'-7"	—	—	—

BILL OF MATERIAL					
SPAN "A", "B", & "C"					
BAR	NO.	SIZE	TYPE	LENGTH	WEIGHT
* A1	355	#5	STR	54'-11"	20334
A2	357	#5	STR	54'-11"	20448
* B1	140	#4	STR	21'-10"	2042
B2	224	#5	STR	53'-6"	12499
* B3	70	#7	STR	53'-3"	7619
* B4	68	#7	STR	21'-8"	3011
* B5	16	#4	STR	27'-9"	297
* B6	35	#4	STR	26'-0"	608
* G1	2	#5	STR	54'-11"	115
* K1	8	#8	1	13'-0"	278
* K2	20	#8	2	19'-2"	1024
K3	36	#5	6	6'-8"	250
K4	36	#5	STR	6'-2"	232
K5	24	#4	STR	4'-4"	69
K6	96	#4	STR	6'-0"	385
K7	20	#4	STR	25'-4"	338
* S1	84	#5	3	5'-10"	511
S2	108	#4	4	7'-3"	523
S3	264	#4	5	2'-9"	485
U1	48	#4	2	14'-8"	470
U2	24	#4	2	12'-8"	203
REINFORCING STEEL					= 35,902 LBS
* EPOXY COATED REINF. STEEL					= 35,839 LBS

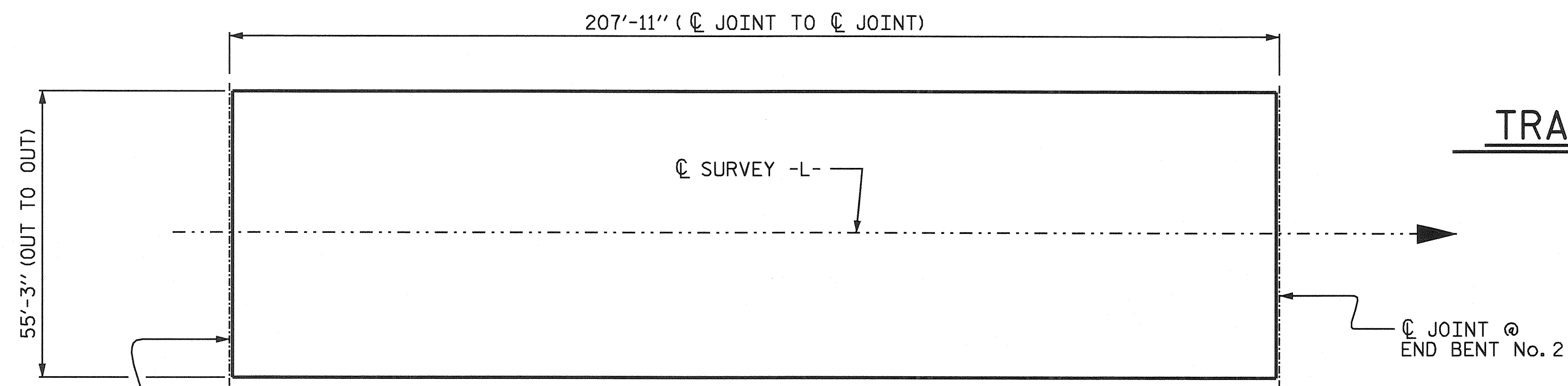


OPTIONAL POURING SEQUENCE

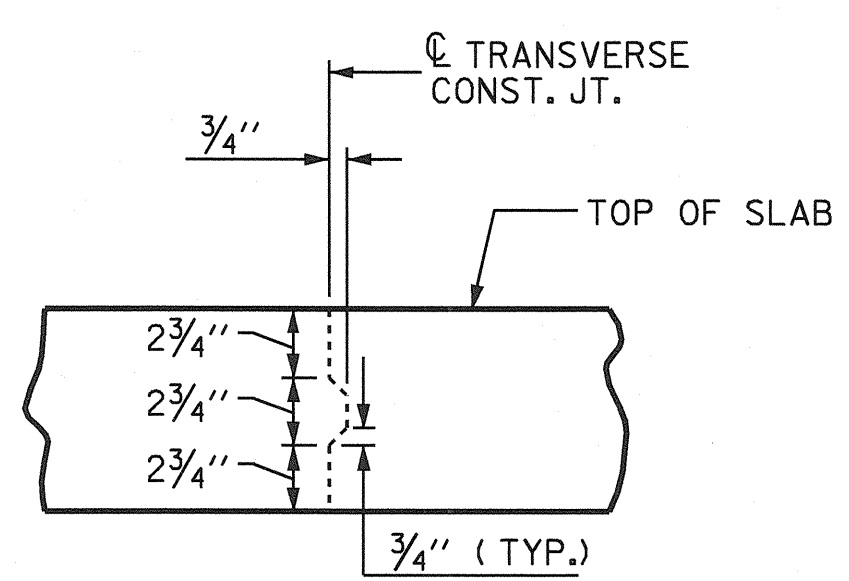
POUR ② CAN NOT BE STARTED UNTIL BOTH ADJACENT ① POURS REACH A MINIMUM OF 3000 PSI.



POURING SEQUENCE



LAYOUT FOR COMPUTING AREA
REINFORCED CONCRETE DECK SLAB
(SQ. FT. = 11,487.4)



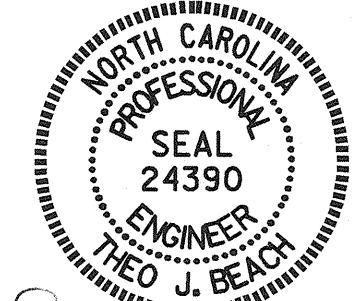
TRANSVERSE CONSTRUCTION JOINT DETAIL

NOTE: REINFORCING STEEL IN SLAB NOT SHOWN. LONGITUDINAL REINFORCING STEEL SHALL BE CONTINUOUS THRU JOINT

SUPERSTRUCTURE BILL OF MATERIAL			
	CLASS AA CONCRETE	REINFORCING STEEL	EPOXY COATED REINFORCING STEEL
SPAN "A", "B", & "C"	(CU. YDS.)	(LBS.)	(LBS.)
POUR #1	98.9	35,902 LBS	35,839 LBS
POUR #2	150.4		
POUR #3	146.4		
TOTALS **	395.7	35,902 LBS	35,839 LBS

** QUANTITIES FOR BARRIER RAIL ARE NOT INCLUDED

PROJECT NO. R-3427
YADKIN COUNTY
STATION: 236+73.00 -L-



STATE OF NORTH CAROLINA
DEPARTMENT OF TRANSPORTATION
RALEIGH
STANDARD
SUPERSTRUCTURE
BILL OF MATERIAL

REVISIONS					
NO.	BY:	DATE:	NO.	BY:	DATE:
1			3		
2			4		

STD. NO. BOM2

STR. #1

ASSEMBLED BY : P.C. BREWER DATE : 6/16/03
CHECKED BY : S.B. WILLIAMS DATE : 6/26/03
DRAWN BY : JMB 5/87 REV. 6/1/94 EEM/GRP
CHECKED BY : SJD 9/87 REV. 8/16/99 RWW/LES