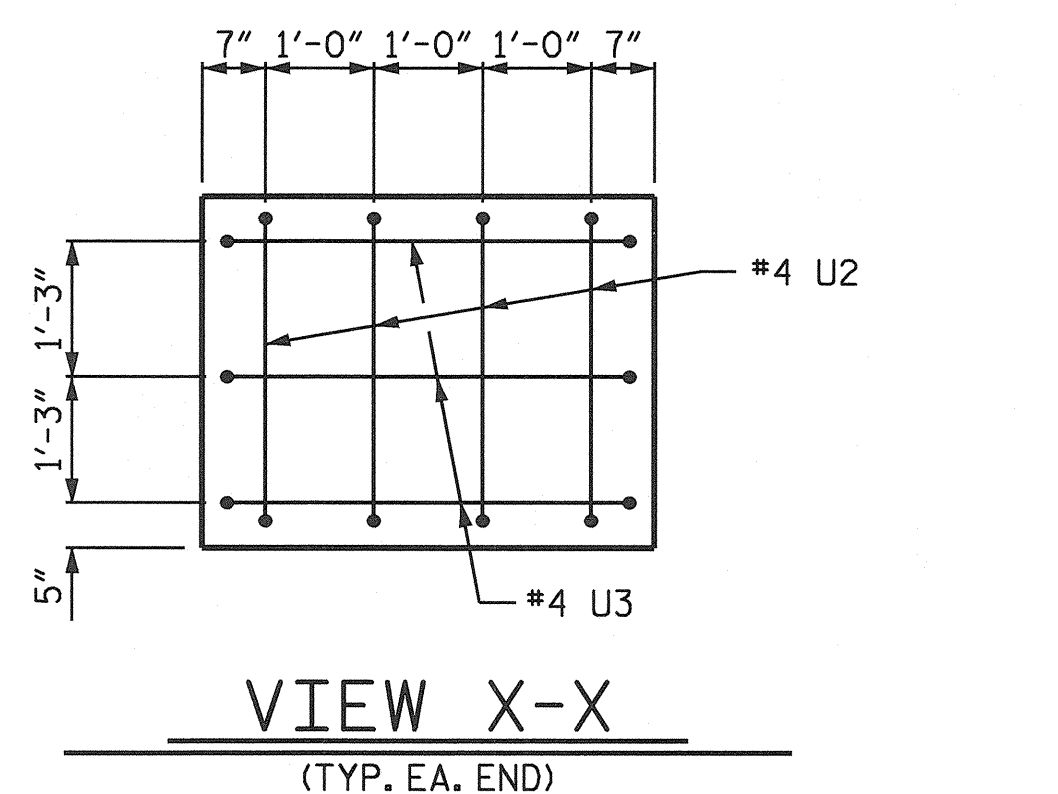
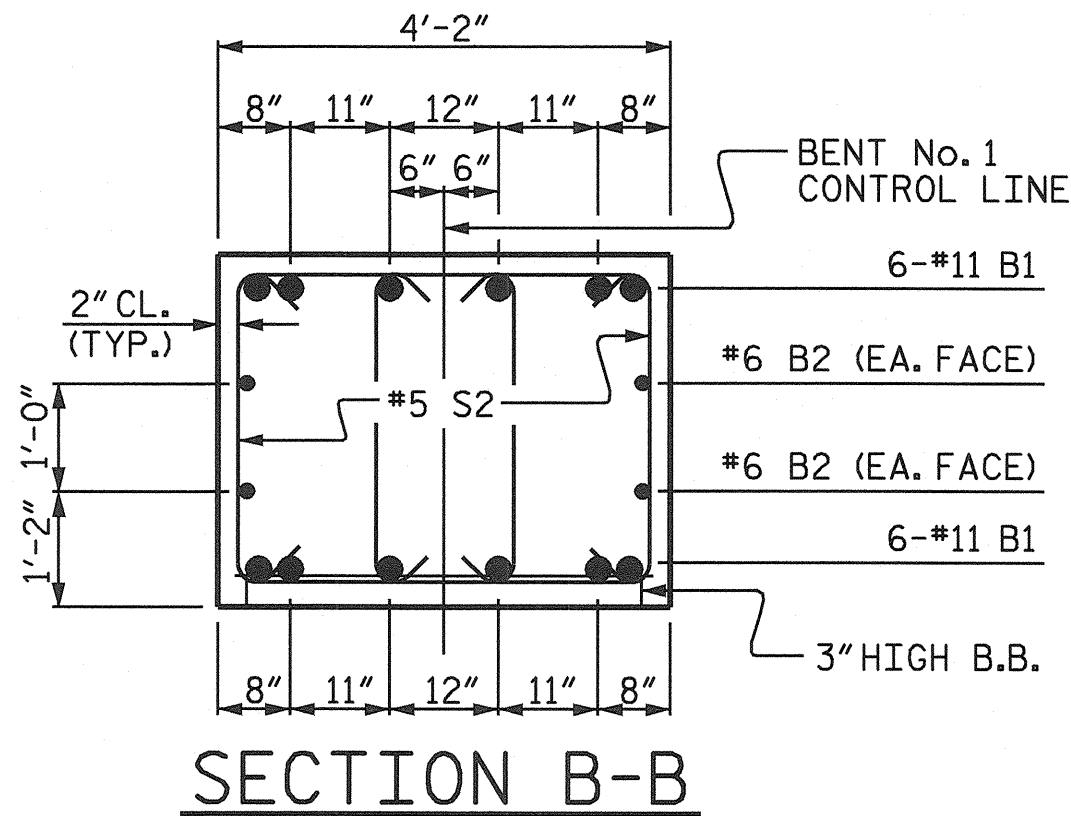


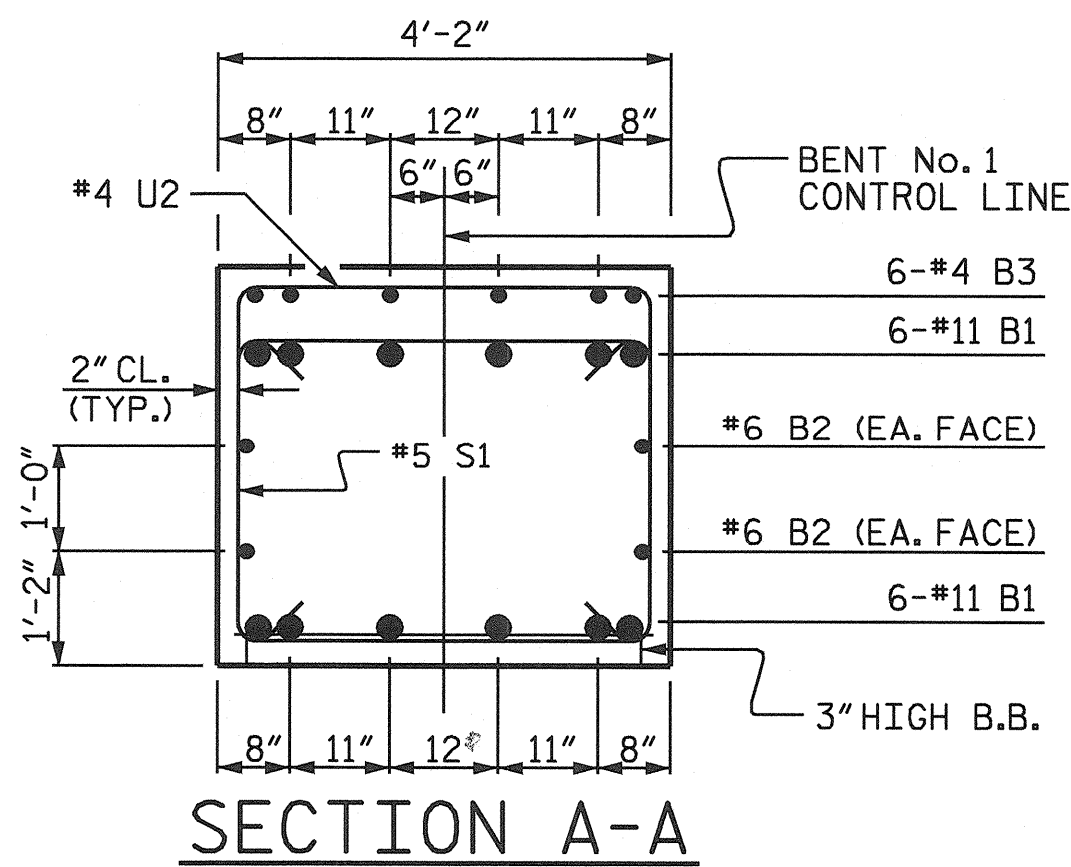
PLAN OF DRILLED PIERS & COLUMNS



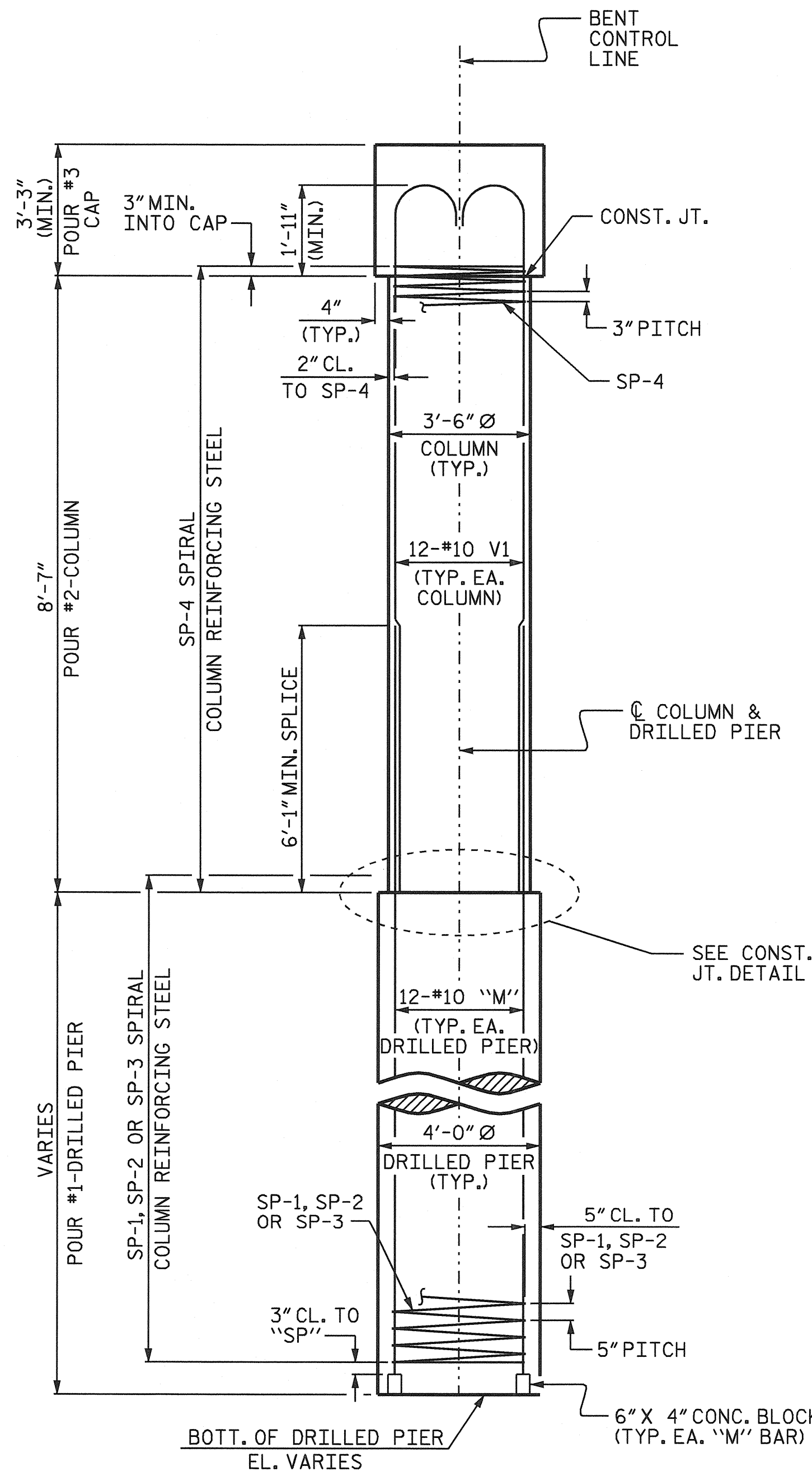
VIEW X-X  
(TYP. EA. END)



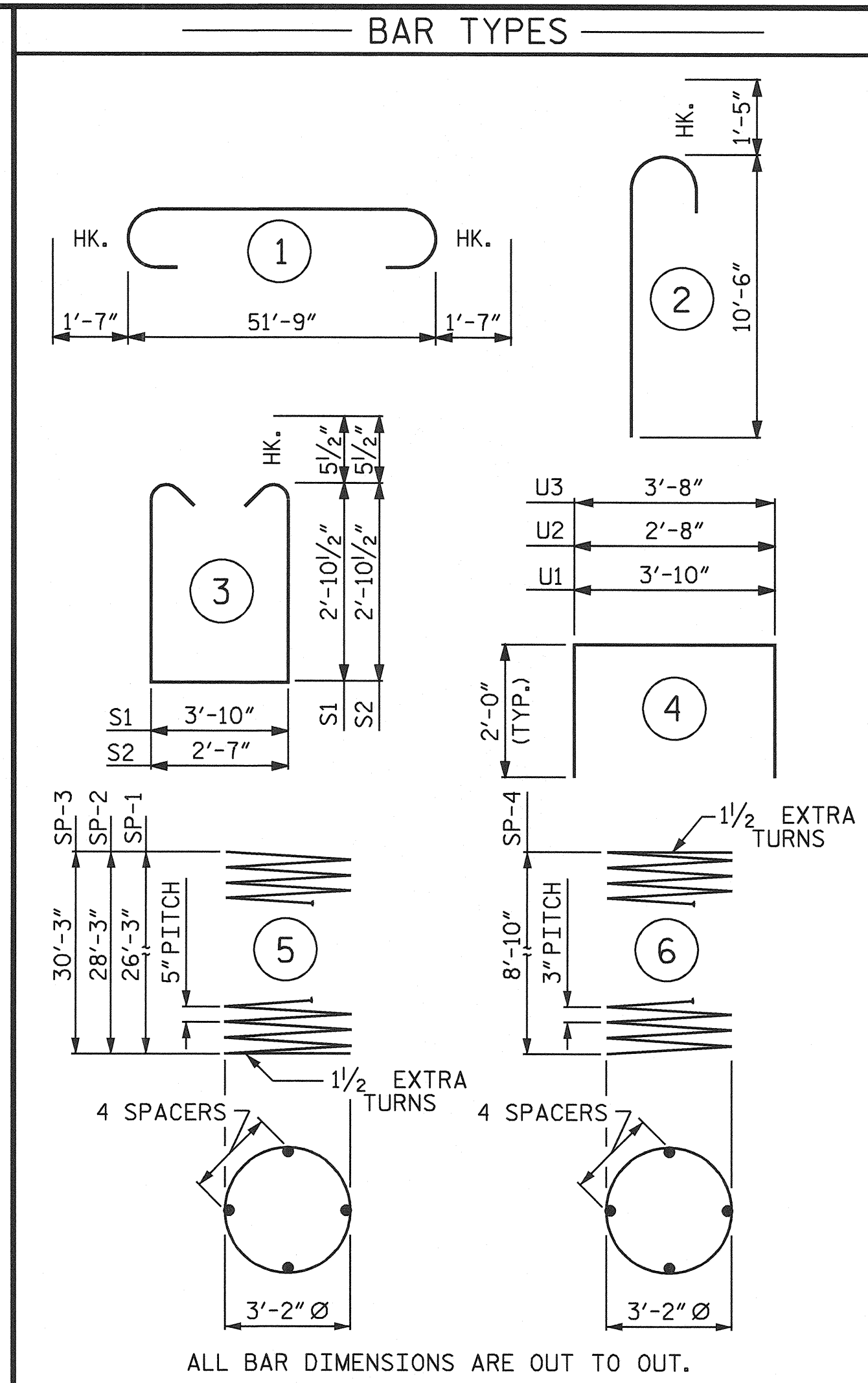
SECTION B-B



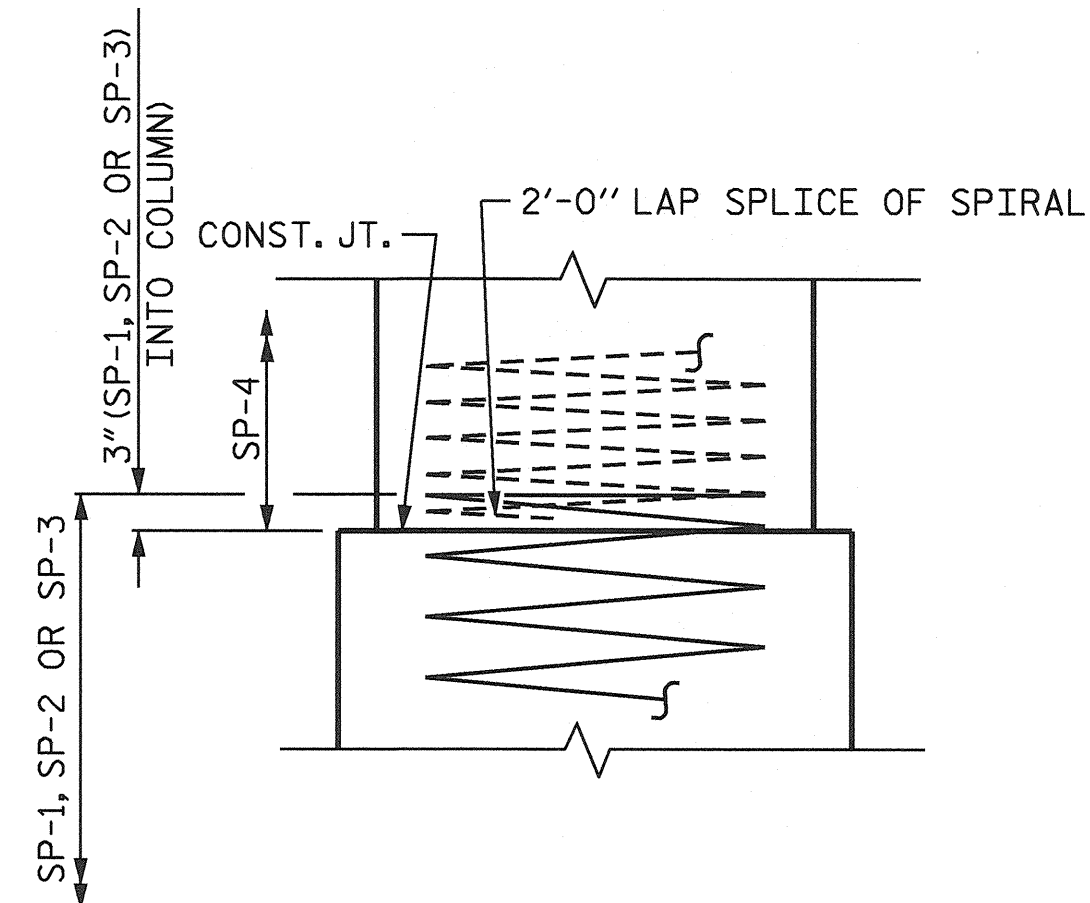
SECTION A-A



END ELEVATION



ALL BAR DIMENSIONS ARE OUT TO OUT.



CONSTRUCTION JOINT DETAIL

BILL OF MATERIAL

BENT No. 1

BAR	NO.	SIZE	TYPE	LENGTH	WEIGHT
B1	12	#11	1	54'-11"	3501
B2	4	#6	STR	51'-10"	311
B3	6	#4	STR	19'-8"	79
M1	12	#10	STR	35'-4"	1824
M2	12	#10	STR	37'-4"	1928
M3	12	#10	STR	39'-4"	2031
S1	54	#5	3	10'-6"	591
S2	28	#5	3	9'-3"	270
U1	53	#4	4	7'-10"	277
U2	8	#4	4	6'-8"	36
U3	6	#4	4	7'-8"	31
V1	36	#10	2	11'-11"	1846

REINFORCING STEEL 12,725 LBS.

SP-1	1	*	5	636'-8"	664
SP-2	1	*	5	685'-7"	715
SP-3	1	*	5	734'-7"	766
SP-4	3	**	6	363'-5"	728

SPIRAL COLUMN REINFORCING STEEL 2,873 LBS.

\* THE SP-1, SP-2, OR SP-3 SPIRAL REINFORCING STEEL SHALL BE W31 OR D-31 COLD DRAWN WIRE OR #5 PLAIN OR DEFORMED BAR.

\*\* THE SP-4 SPIRAL REINFORCING STEEL SHALL BE W20 OR D-20 COLD DRAWN WIRE OR #4 PLAIN OR DEFORMED BAR.

CLASS A CONCRETE (C.Y.)		
POUR #2 (COLUMNS)		= 9.2
POUR #3 (CAP)		= 27.6
TOTAL		= 36.8

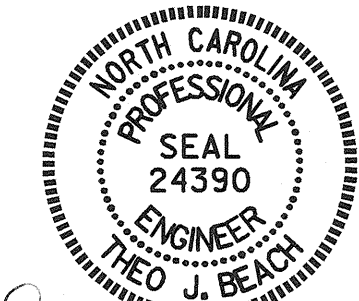
DRILLED PIERS:		
DRILLED PIER CONCRETE (C.Y.)		
POUR #1 (DRILLED PIERS)		= 40.2
4'-0" Ø DRILLED PIER IN SOIL		= 61.25 LIN. FT.
4'-0" Ø DRILLED PIER NOT IN SOIL		= 25.0 LIN. FT.
PERMANENT STEEL CASING FOR 4'-0" Ø DRILLED PIERS		= 60.77 LIN. FT.
CSL TUBES		= 375.0 LIN. FT.

PROJECT NO. R-3427  
YADKIN COUNTY  
STATION: 236+73.00 -L-

SHEET 2 OF 2

STATE OF NORTH CAROLINA  
DEPARTMENT OF TRANSPORTATION  
RALEIGH

SUBSTRUCTURE  
BENT No. 1



REVISIONS					SHEET NO.
NO.	BY:	DATE:	NO.	BY:	DATE:
1			3		
2			4		

STR. #1

DRAWN BY: S.B. WILLIAMS DATE: 1/13/04  
CHECKED BY: C.H. SIMPSON DATE: 2/24/04

13-AUG-2004 11:58  
W:\squad\vr3427\str1\sbwilliams\lrcrostation\R3427\_sd.B1.01.dgn  
tbeach