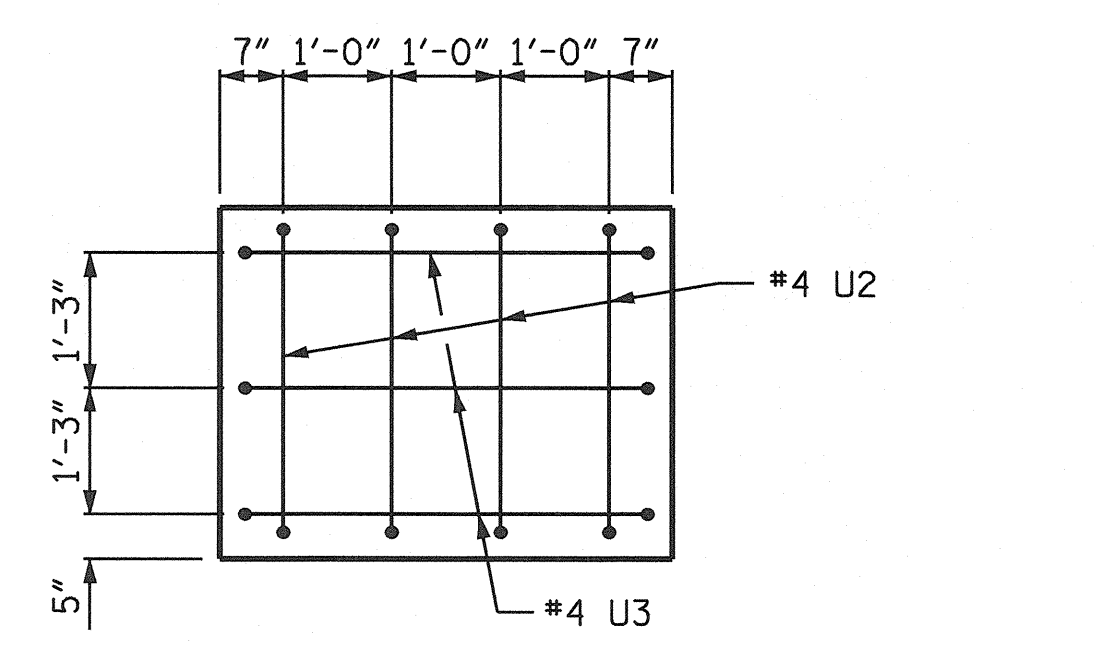
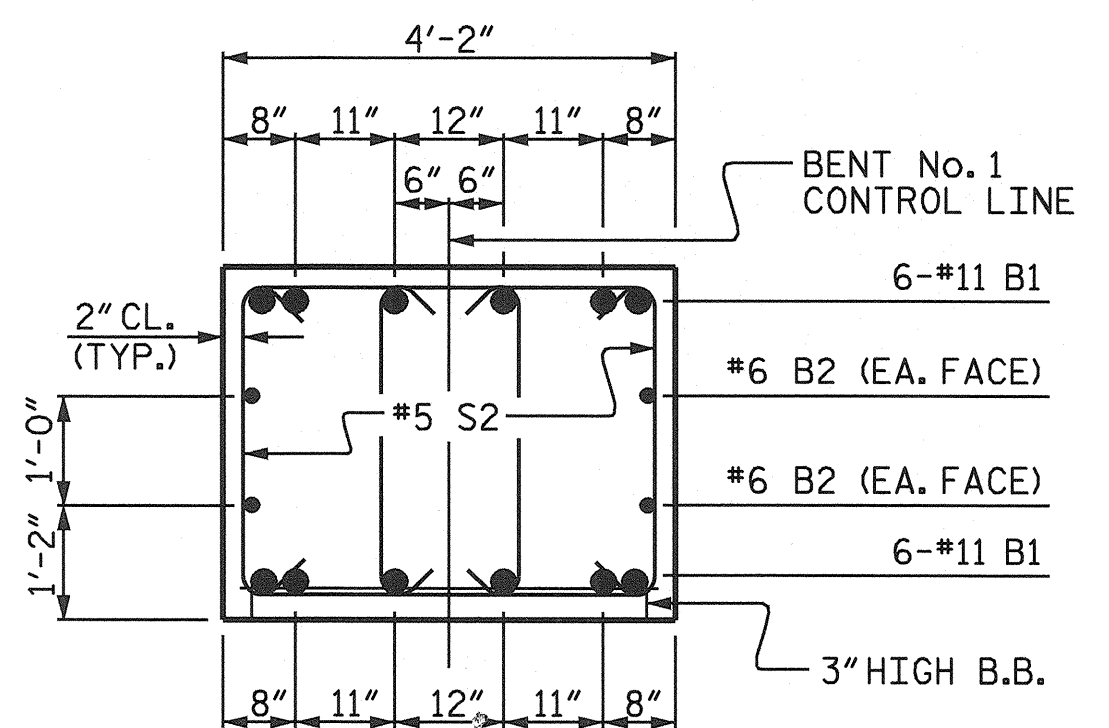


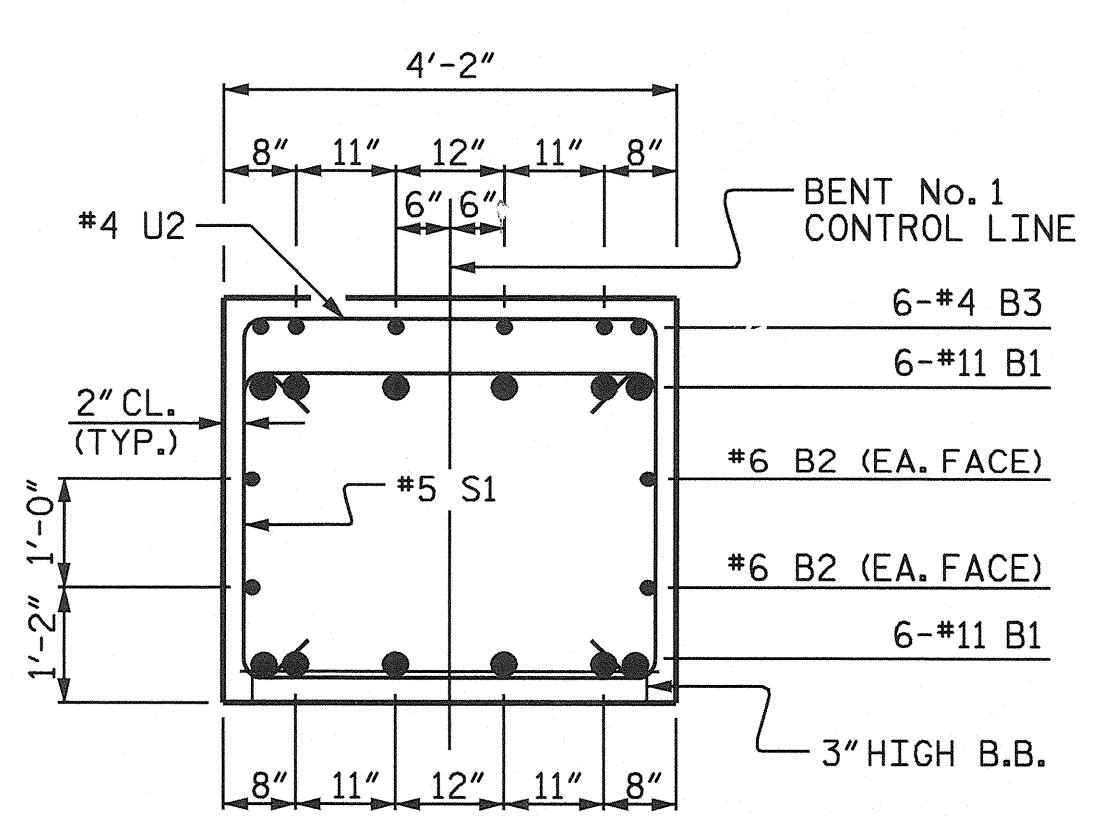
PLAN OF DRILLED PIERS & COLUMNS



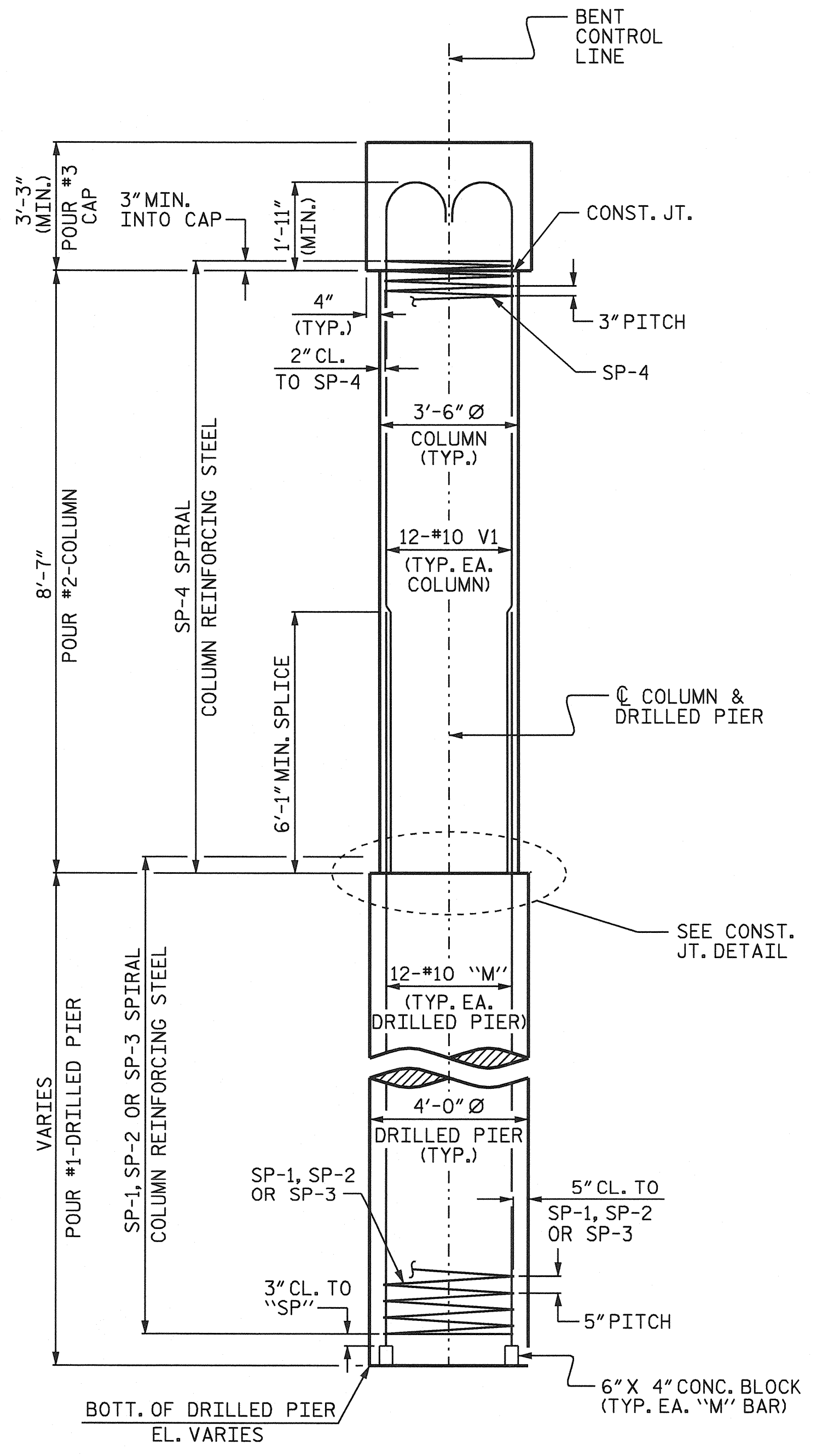
VIEW X-X
(TYP. EA. END)



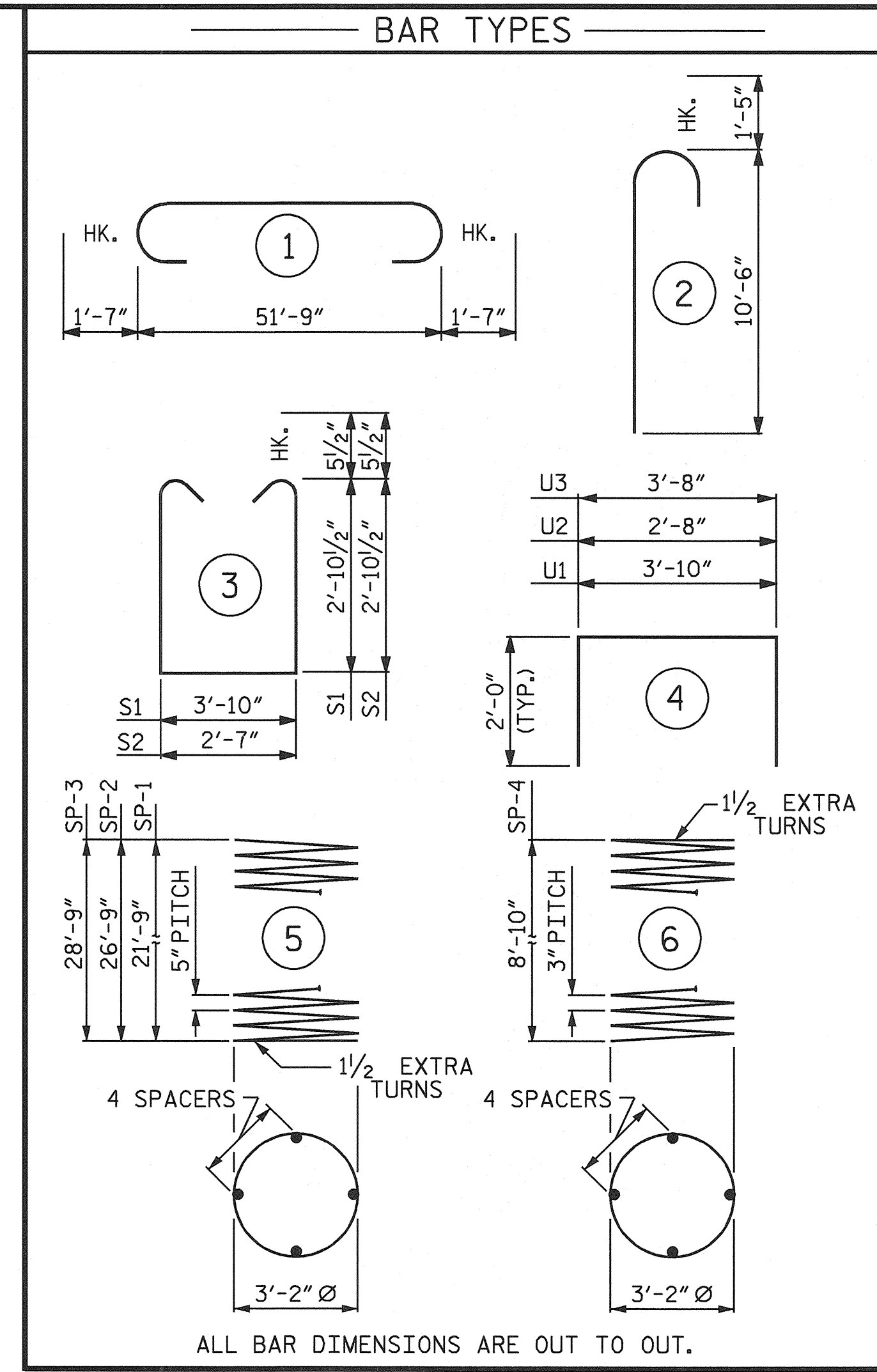
SECTION B-B



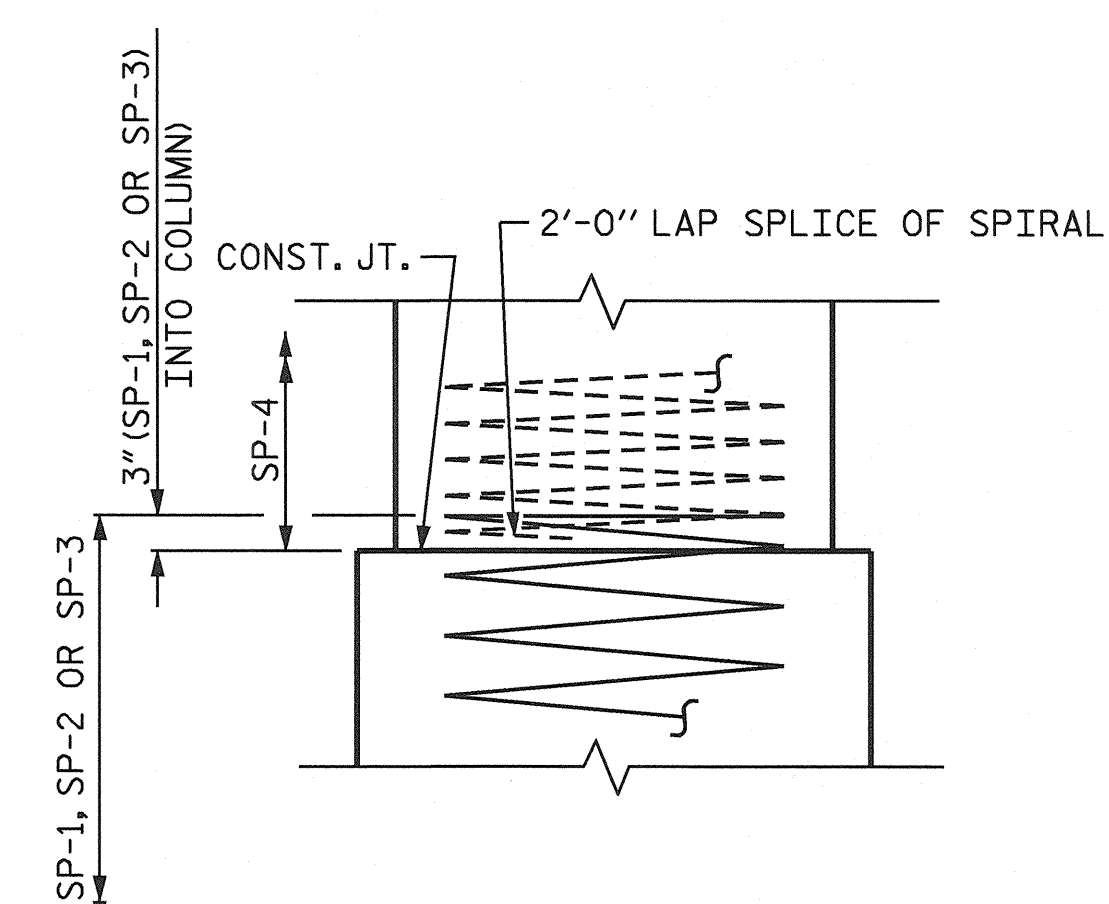
SECTION A-A



END ELEVATION



ALL BAR DIMENSIONS ARE OUT TO OUT.



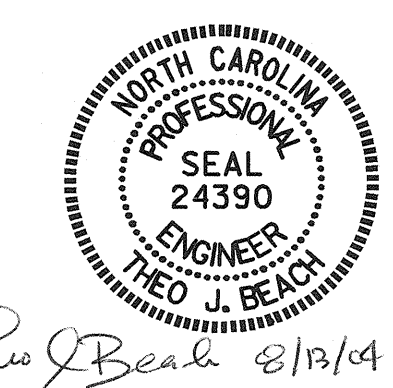
CONSTRUCTION JOINT DETAIL

BILL OF MATERIAL					
BENT No. 2					
BAR	NO.	SIZE	TYPE	LENGTH	WEIGHT
B1	12	#11	1	54'-11"	3501
B2	4	#6	STR	51'-10"	311
B3	6	#4	STR	19'-8"	79
M1	12	#10	STR	30'-10"	1592
M2	12	#10	STR	35'-10"	1850
M3	12	#10	STR	37'-10"	1954
S1	54	#5	3	10'-6"	591
S2	28	#5	3	9'-3"	270
U1	53	#4	4	7'-10"	277
U2	8	#4	4	6'-8"	36
U3	6	#4	4	7'-8"	31
V1	36	#10	2	11'-11"	1846
REINFORCING STEEL					12,338 LBS.
SP-1	1	*	5	528'-11"	552
SP-2	1	*	5	646'-5"	674
SP-3	1	*	5	695'-5"	725
SP-4	3	**	6	363'-5"	728
SPIRAL COLUMN REINFORCING STEEL					2,679 LBS.
* THE SP-1, SP-2, OR SP-3 SPIRAL REINFORCING STEEL SHALL BE W31 OR D-31 COLD DRAWN WIRE OR #5 PLAIN OR DEFORMED BAR.					
** THE SP-4 SPIRAL REINFORCING STEEL SHALL BE W20 OR D-20 COLD DRAWN WIRE OR #4 PLAIN OR DEFORMED BAR.					
CLASS A CONCRETE (C.Y.)					
POUR #2 (COLUMNS)					= 9.2
POUR #3 (CAP)					= 27.6
TOTAL					= 36.8
DRILLED PIERS:					
DRILLED PIER CONCRETE (C.Y.)					
POUR #1 (DRILLED PIERS)					= 36.7
4'-0" DRILLED PIER IN SOIL					= 53.75 LIN. FT.
4'-0" DRILLED PIER NOT IN SOIL					= 25.0 LIN. FT.
PERMANENT STEEL CASING FOR 4'-0" DRILLED PIERS					= 45.27 LIN. FT.
CSL TUBES					= 345.0 LIN. FT.

PROJECT NO. R-3427
YADKIN COUNTY
 STATION: 236+73.00 -L-

SHEET 2 OF 2

STATE OF NORTH CAROLINA DEPARTMENT OF TRANSPORTATION RALEIGH					
SUBSTRUCTURE					
BENT No. 2					
REVISIONS					SHEET NO.
NO.	BY:	DATE:	NO.	BY:	DATE:
1			3		
2			4		
					S-24
					TOTAL 31



DRAWN BY: S.B. WILLIAMS DATE: 1/14/04
 CHECKED BY: C.H. SIMPSON DATE: 2/24/04