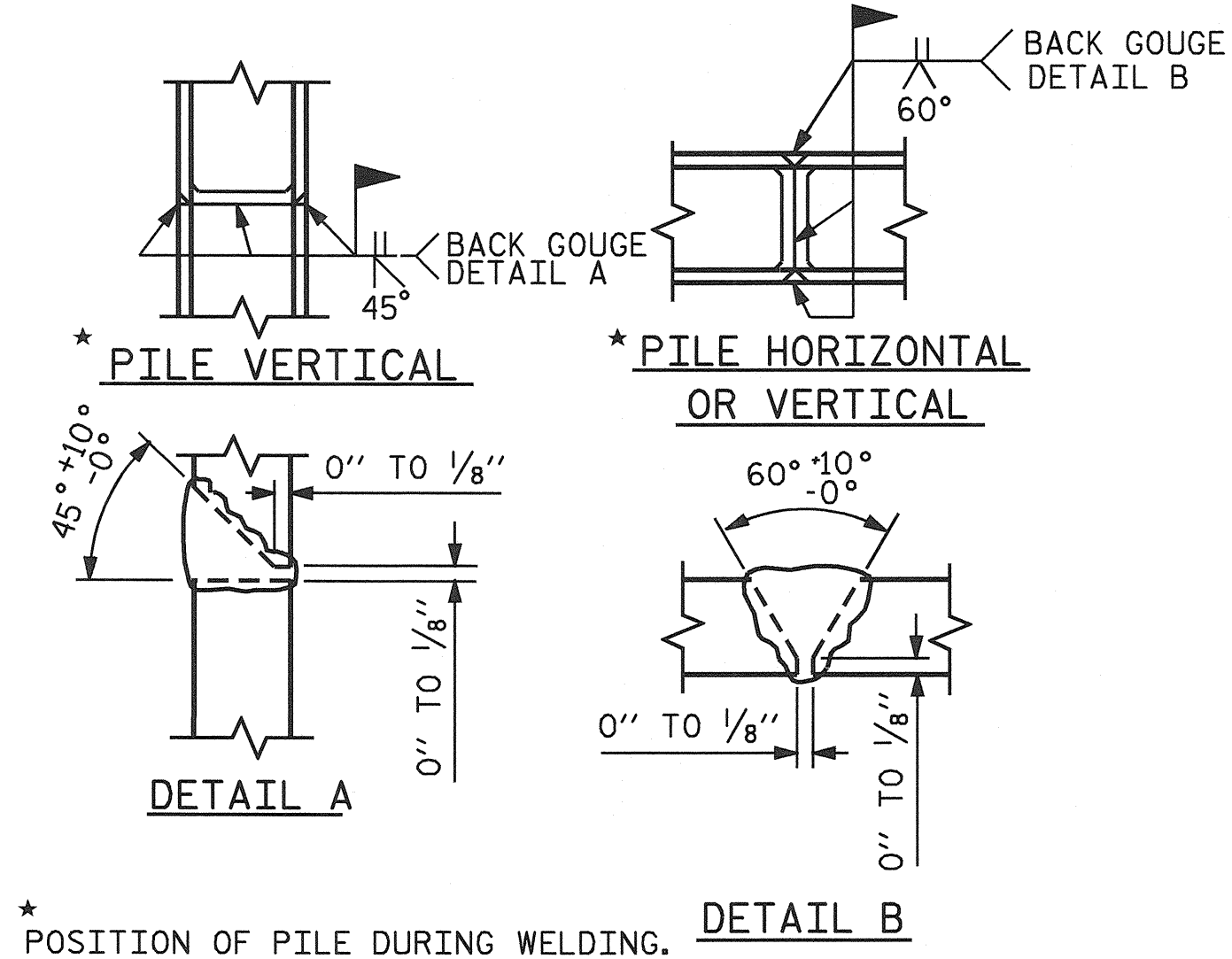


NOTE: NO SEPARATE PAYMENT WILL BE MADE FOR FURNISHING AND INSTALLING THE PVC PLASTIC PIPE DRAINS, HARDWARE CLOTH AND FASTENERS. THE ENTIRE COST OF THIS WORK SHALL BE INCLUDED IN THE UNIT CONTRACT PRICE BID FOR THE SEVERAL PAY ITEMS.

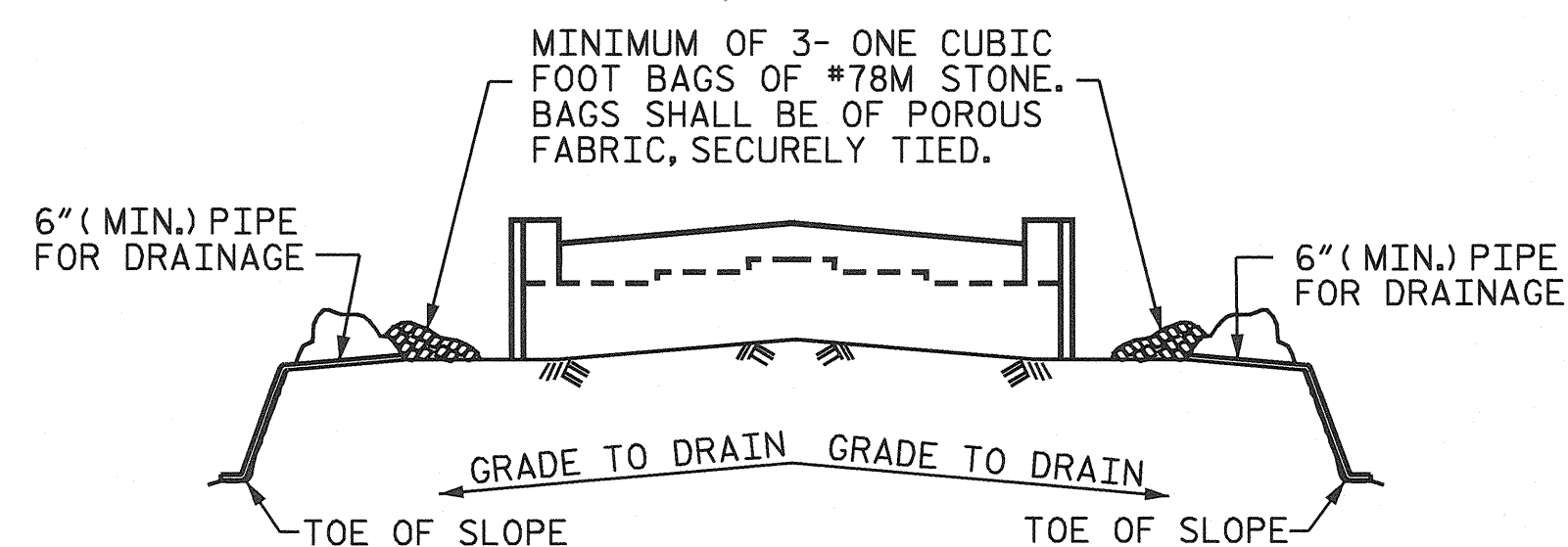
PIPE DRAIN DETAILS



PILE SPLICE DETAILS

BILL OF MATERIAL					
END BENT No. 2					
BAR	NUMBER	SIZE	TYPE	LENGTH	WEIGHT
B1	8	9	1	36'-0"	979
B2	8	9	1	34'-9"	945
B3	8	5	STR	31'-11"	266
B4	12	4	STR	21'-11"	176
B5	4	4	STR	19'-3"	51
B6	15	4	STR	2'-8"	27
H1	36	5	2	10'-9"	404
K1	30	4	STR	21'-11"	439
K2	8	4	STR	2'-6"	13
S1	64	4	3	7'-8"	328
S2	64	4	4	3'-5"	146
S3	22	4	5	6'-6"	96
U1	56	4	6	4'-8"	175
U2	13	4	6	6'-8"	58
V1	112	5	STR	6'-7"	769
V2	56	5	STR	7'-10"	458
REINFORCING STEEL					5,330 LBS.
CLASS A CONCRETE BREAKDOWN :					
POUR #1 - (CAP & LOWER WINGS)				20.1 C.Y.	
POUR #2 - (BACKWALL & UPPER WINGS)				14.5 C.Y.	
TOTAL				34.6 C.Y.	
HP 12 x 53 STEEL PILES					
NO. = 11 LIN. FEET = 330					

ALL BAR DIMENSIONS ARE OUT TO OUT.

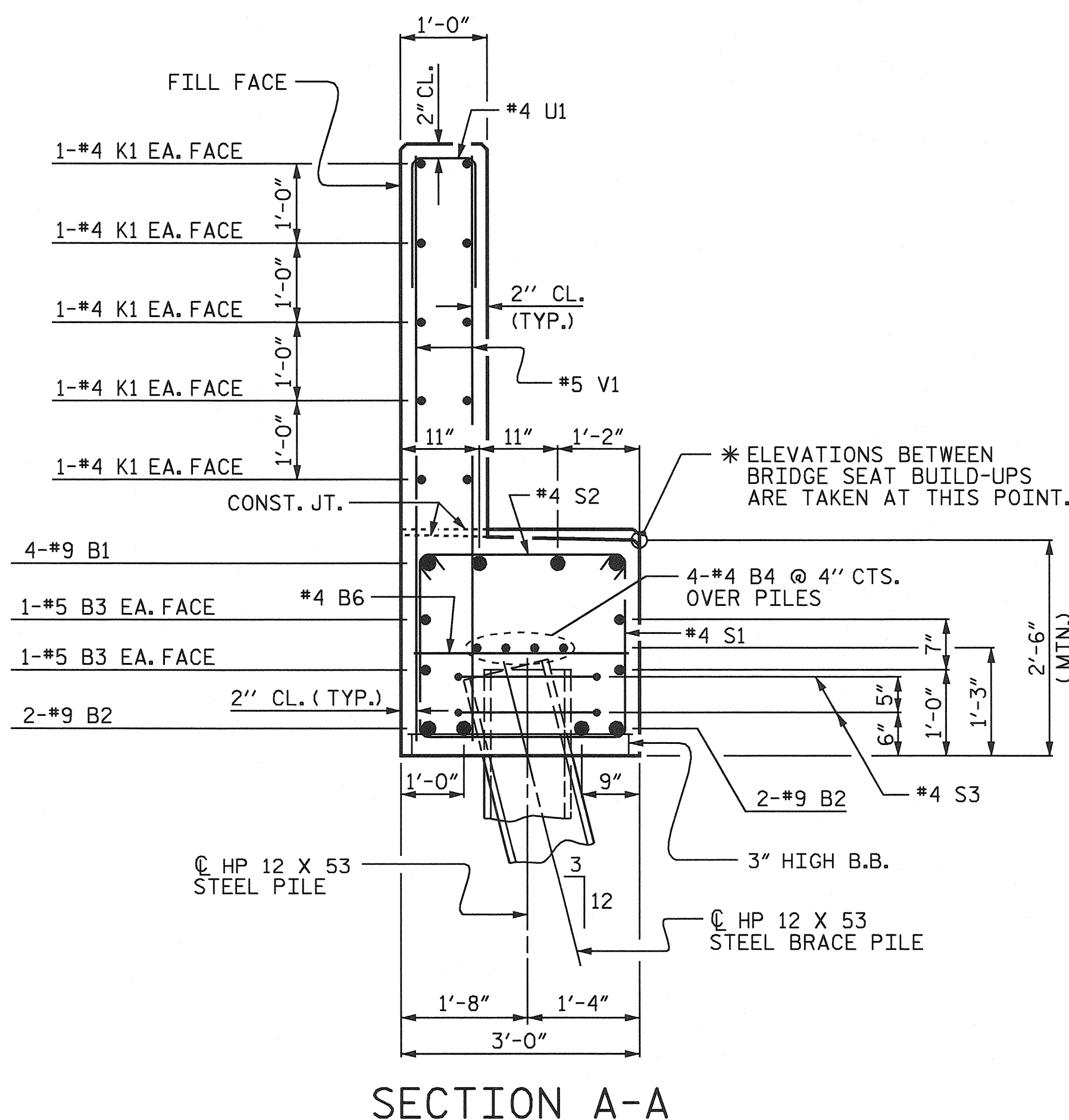


BAGGED STONE AND PIPE SHALL BE PLACED IMMEDIATELY AFTER COMPLETION OF END BENT EXCAVATION. PIPE MAY BE EITHER CONCRETE, CORRUGATED STEEL, CORRUGATED ALUMINUM ALLOY, OR CORRUGATED PLASTIC. PERFORATED PIPE WILL NOT BE ALLOWED.

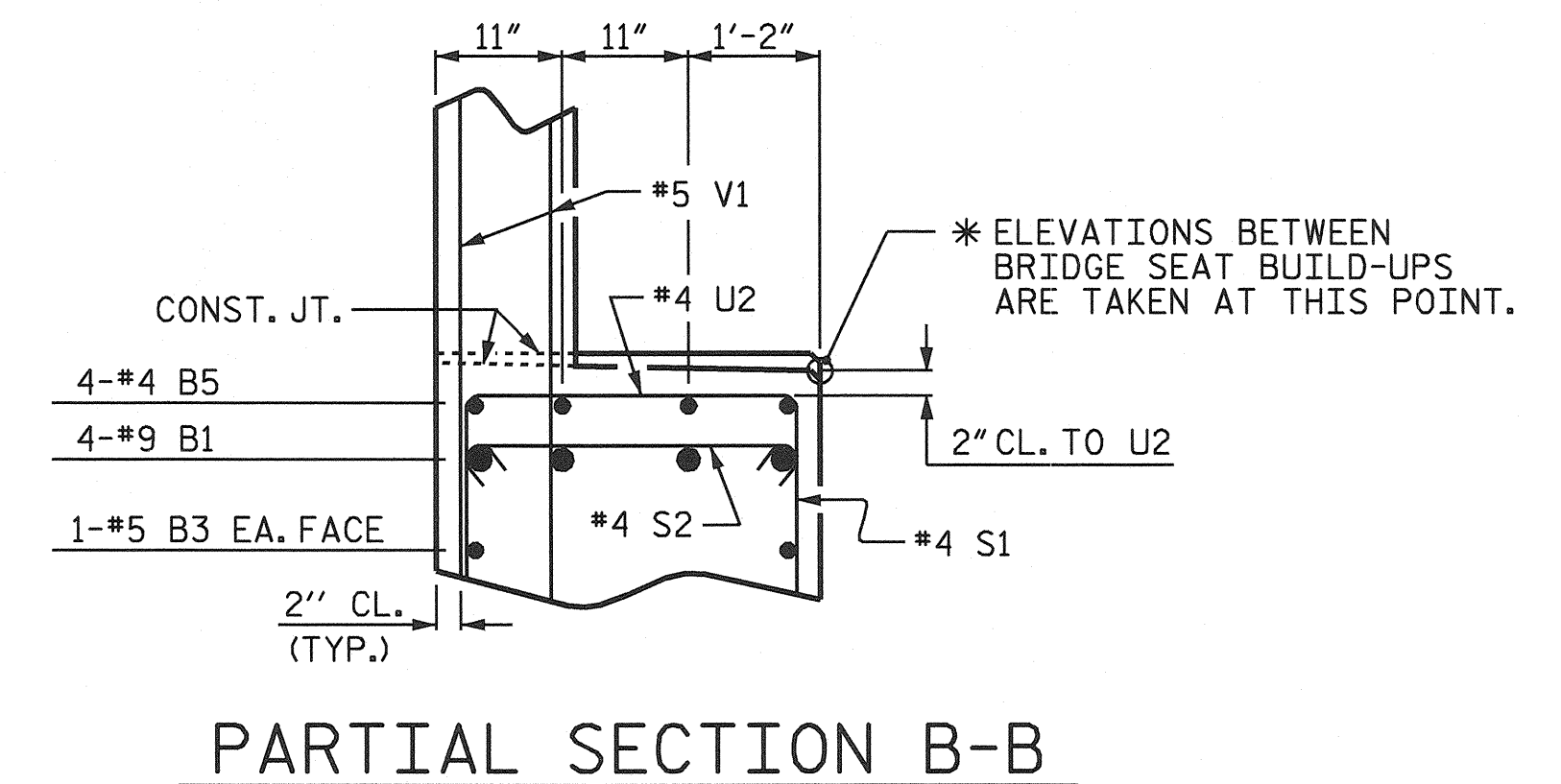
BAGGED STONE SHALL REMAIN IN PLACE UNTIL THE ENGINEER DIRECTS THAT IT BE REMOVED. THE CONTRACTOR SHALL REMOVE AND DISPOSE OF SILT ACCUMULATIONS AT BAGGED STONE WHEN SO DIRECTED BY THE ENGINEER. BAGS SHALL BE REMOVED AND REPLACED WHENEVER THE ENGINEER DETERMINES THAT THEY HAVE DETERIORATED AND LOST THEIR EFFECTIVENESS.

NO SEPARATE PAYMENT WILL BE MADE FOR THIS WORK AND THE ENTIRE COST OF THIS WORK SHALL BE INCLUDED IN THE UNIT CONTRACT PRICE BID FOR THE SEVERAL PAY ITEMS.

TEMPORARY DRAINAGE AT END BENT



SECTION A-A



PARTIAL SECTION B-B

PROJECT NO. R-3427
YADKIN COUNTY
 STATION: 236+73.00 -L-

SHEET 3 OF 3

STATE OF NORTH CAROLINA
 DEPARTMENT OF TRANSPORTATION
 RALEIGH
 SUBSTRUCTURE
 END BENT No. 2

REVISIONS				SHEET NO.	
NO.	BY:	DATE:	NO.	BY:	DATE:
1			3		
2			4		

STR. #1

DRAWN BY : P.C. BREWER DATE : 6/30/03
 CHECKED BY : S.B. WILLIAMS DATE : 7/16/03

13-AUG-2004 12:11
 W:\squad\13427\str1\pbrewer\Mcrostation\R3427.sd.EB2.01.dgn
 tbeach



Theo J. Beach 8/13/04