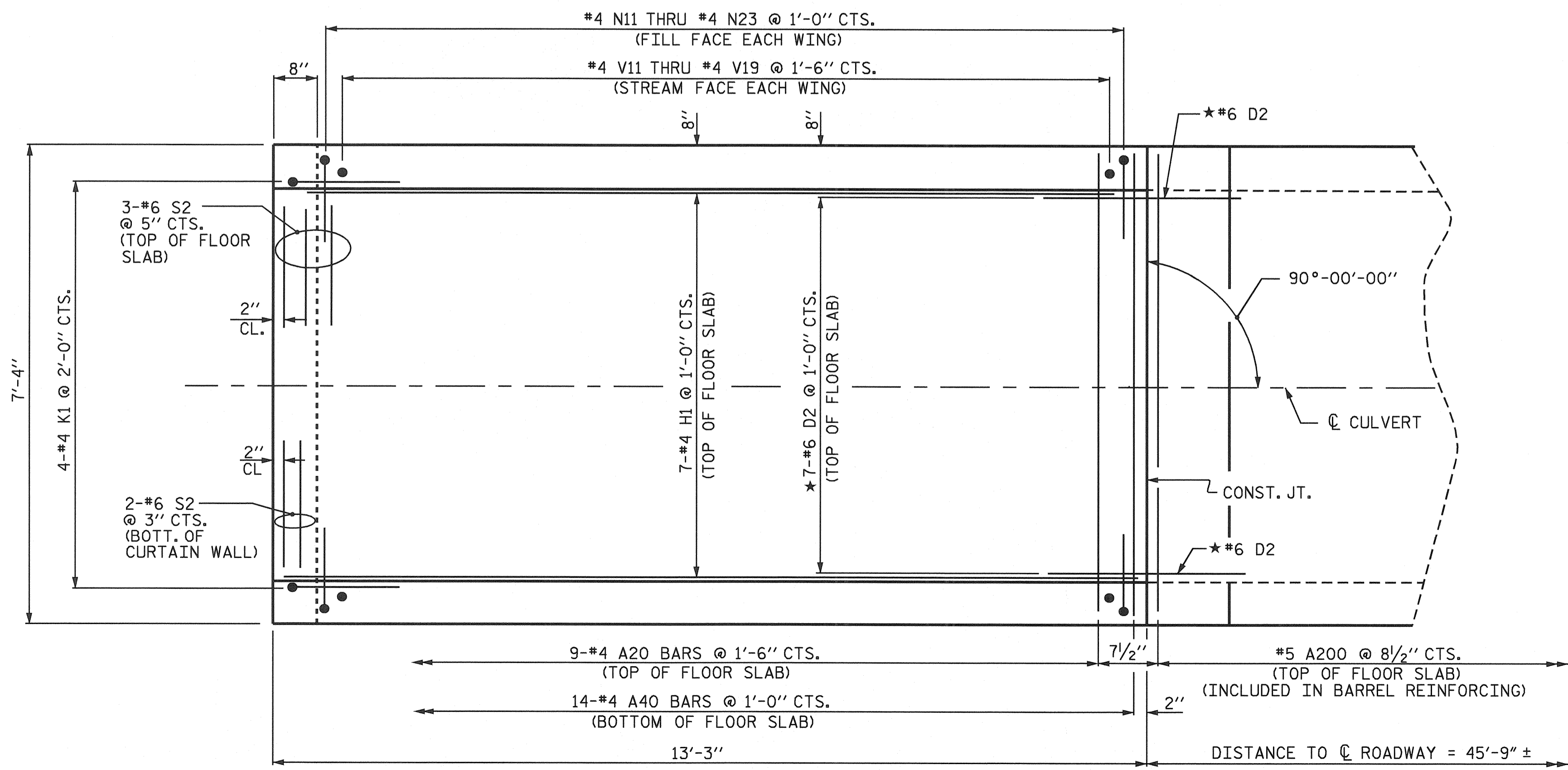
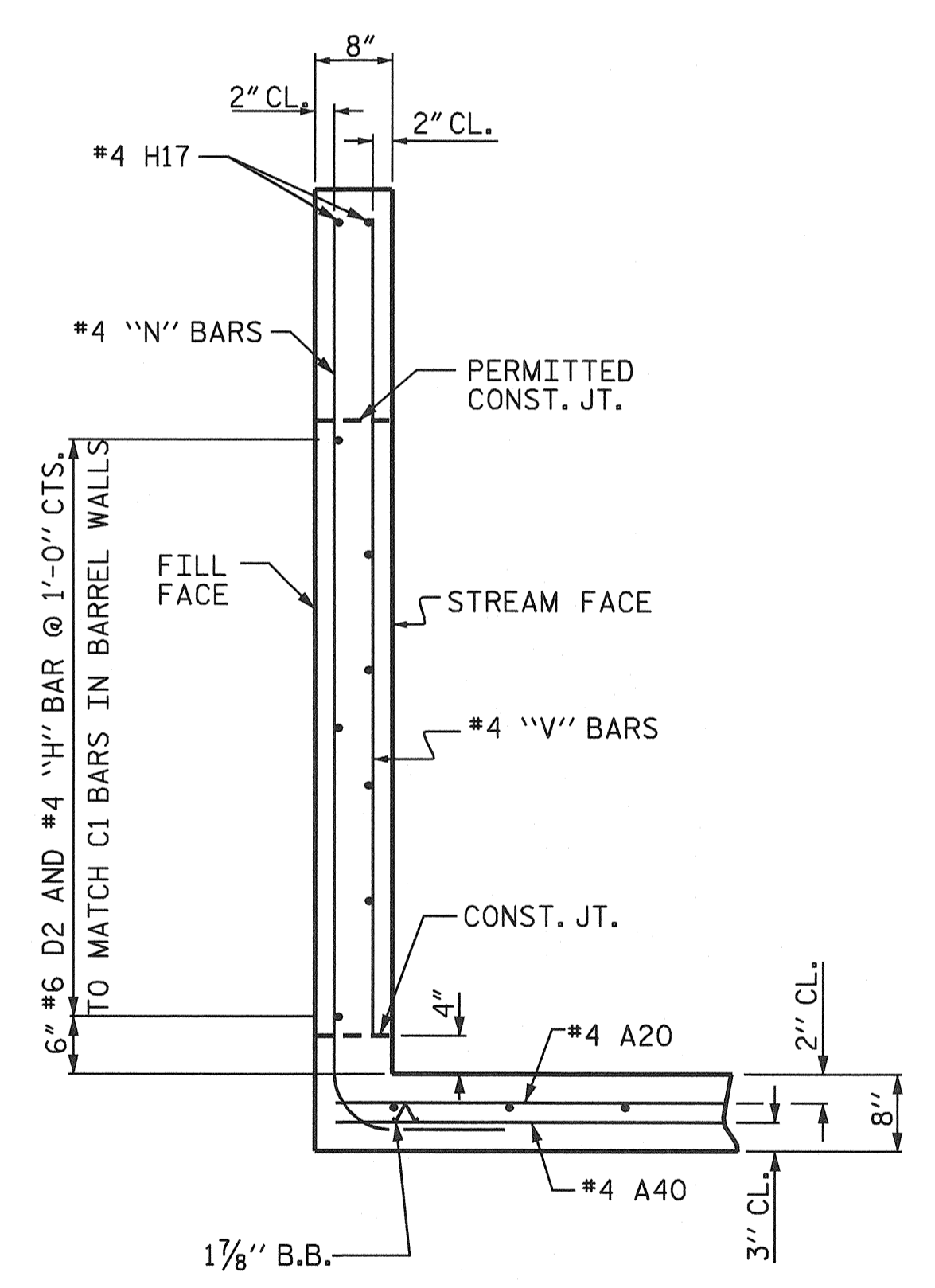
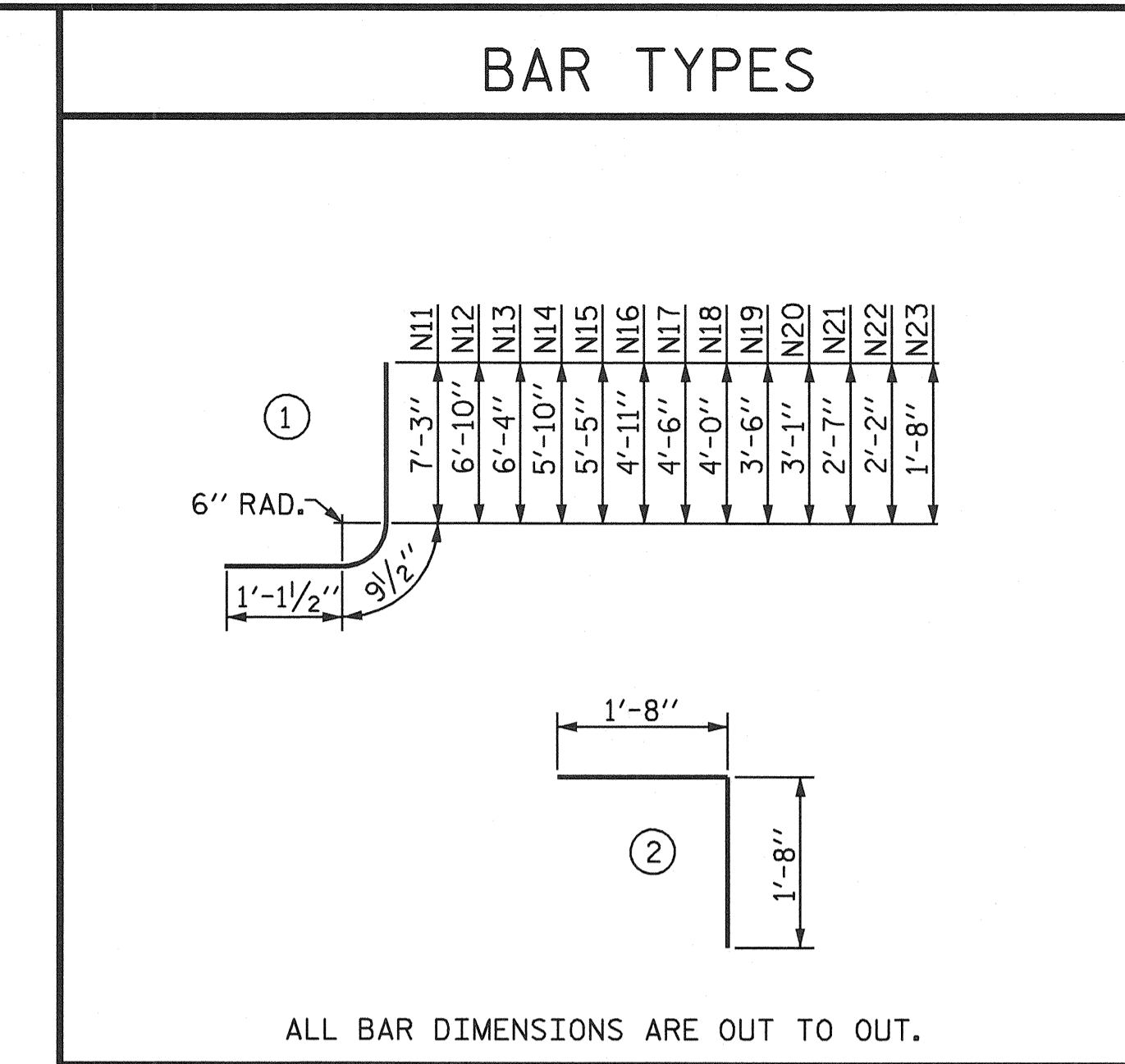


OUTLET WING SECTION NORMAL TO ROADWAY



PLAN - OUTLET WINGS



TYPICAL WING SECTION

BILL OF MATERIAL

BAR NO.	NO.	SIZE	TYPE	LENGTH	WEIGHT
A20	9	4	STR	12'-11"	78
A40	14	4	STR	12'-11"	121
H11	11	4	STR	12'-11"	95
H12	2	4	STR	10'-9"	14
H13	2	4	STR	9'-8"	13
H14	2	4	STR	8'-7"	11
H15	2	4	STR	6'-5"	9
H16	2	4	STR	4'-3"	6
H17	4	4	STR	14'-3"	38
K1	4	4	2	3'-4"	9
N11	2	4	1	9'-2"	12
N12	2	4	1	8'-9"	12
N13	2	4	1	8'-3"	11
N14	2	4	1	7'-9"	10
N15	2	4	1	7'-4"	10
N16	2	4	1	6'-10"	9
N17	2	4	1	6'-5"	9
N18	2	4	1	5'-11"	8
N19	2	4	1	5'-5"	7
N20	2	4	1	5'-0"	7
N21	2	4	1	4'-6"	6
N22	2	4	1	4'-1"	5
N23	2	4	1	3'-7"	5
S2	5	6	STR	7'-0"	53
V11	2	4	STR	6'-10"	9
V12	2	4	STR	6'-2"	8
V13	2	4	STR	5'-5"	7
V14	2	4	STR	4'-9"	6
V15	2	4	STR	4'-0"	5
V16	2	4	STR	3'-4"	4
V17	2	4	STR	2'-8"	4
V18	2	4	STR	1'-11"	3
V19	2	4	STR	1'-5"	2

REINFORCING STEEL FOR 2 OUTLET WINGS 606 LBS.
CLASS A CONCRETE
2 OUTLET WINGS 2.8 C.Y.
1 HEADWALL 0.3 C.Y.
1 END CURTAIN WALL AND OUTLET WING SLAB 2.9 C.Y.
TOTAL 6.0 C.Y.

*#6 D2 ARE INCLUDED WITH LEFT EXTENSION REINFORCING STEEL

PROJECT NO. R-3427
YADKIN COUNTY
STATION: 25+91.40 -L-

SHEET 4 OF 5

STATE OF NORTH CAROLINA
DEPARTMENT OF TRANSPORTATION
RALEIGH

OUTLET WINGS FOR LEFT EXTENSION CONCRETE BOX CULVERT
H = 6'-0" SLOPE = 2:1
90° SKEW



REVISIONS						SHEET NO. C-4
NO.	BY:	DATE:	NO.	BY:	DATE:	
1			3			TOTAL SHEETS 9
2			4			

DRAWN BY : DAN PLATICA DATE : 4/8/03
CHECKED BY : S.B. WILLIAMS DATE : 4/29/03