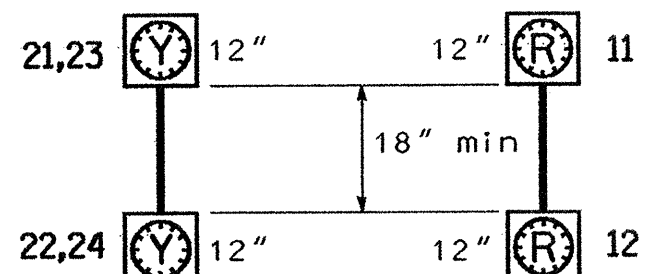


TABLE OF OPERATION

SIGNAL FACE	INTERVAL	
	1	2
11	ON	OFF
12	OFF	ON
21,23	ON	OFF
22,24	OFF	ON

SIGNAL FACE I.D.

Denotes L.E.D.



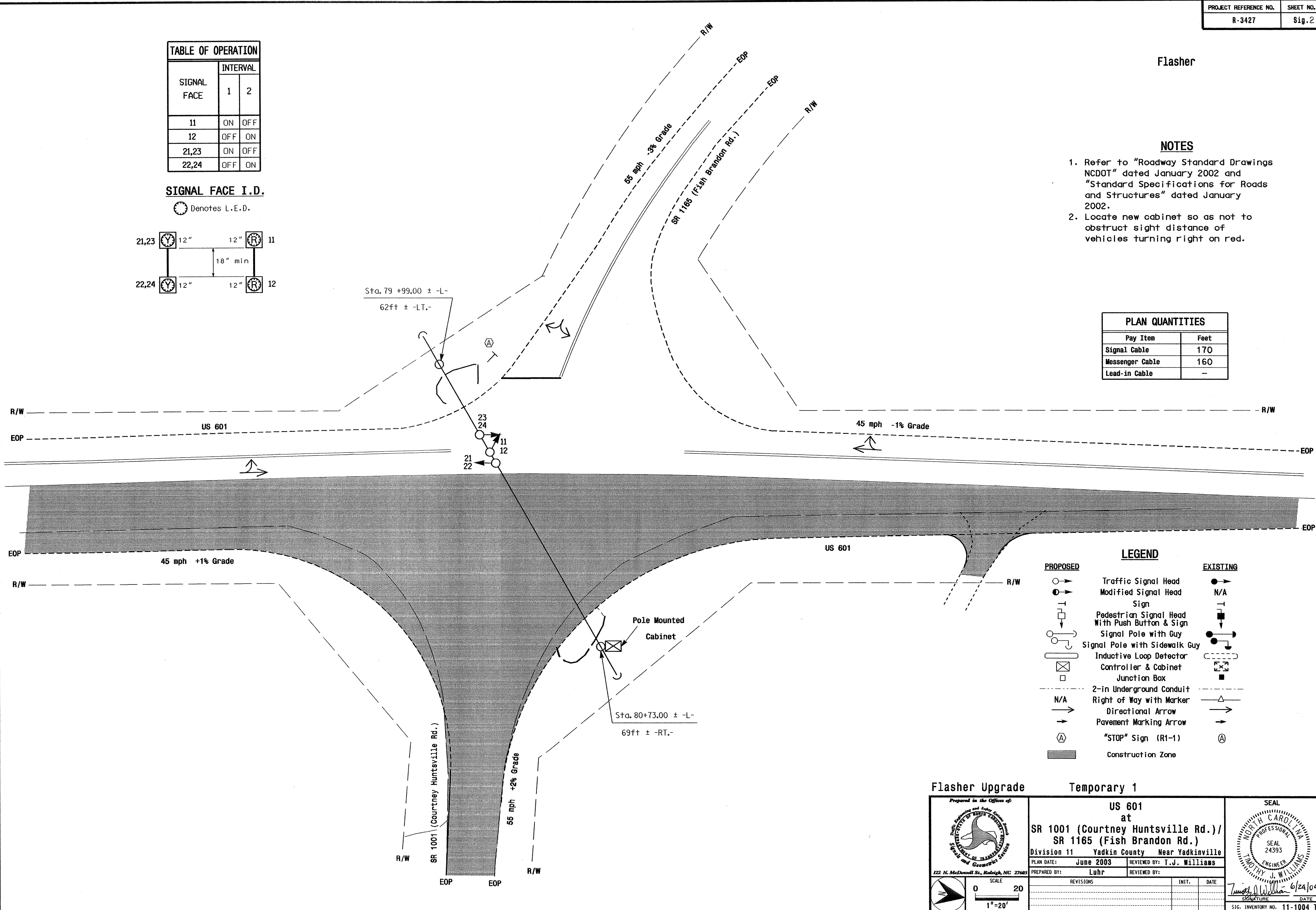
Flasher

NOTES

- Refer to "Roadway Standard Drawings NCDOT" dated January 2002 and "Standard Specifications for Roads and Structures" dated January 2002.
- Locate new cabinet so as not to obstruct sight distance of vehicles turning right on red.

PLAN QUANTITIES

Pay Item	Feet
Signal Cable	170
Messenger Cable	160
Lead-in Cable	-



LEGEND

PROPOSED	EXISTING

Flasher Upgrade Temporary 1

	<p>US 601 at SR 1001 (Courtney Huntsville Rd.) / SR 1165 (Fish Brandon Rd.)</p>		
	<p>Division 11 Yadkin County Near Yadkinville</p>		
	<p>PLAN DATE: June 2003</p>	<p>REVIEWED BY: T.J. Williams</p>	
<p>PREPARED BY: Luhr</p>	<p>REVIEWED BY:</p>	<p>INIT. DATE</p>	<p>DATE</p>
<p>REVISIONS</p>	<p>INIT.</p>	<p>DATE</p>	<p>DATE</p>
<p>SCALE 1"=20'</p>	<p>SIGNATURE: <i>Timothy J. Williams</i> DATE: 6/24/04</p>		