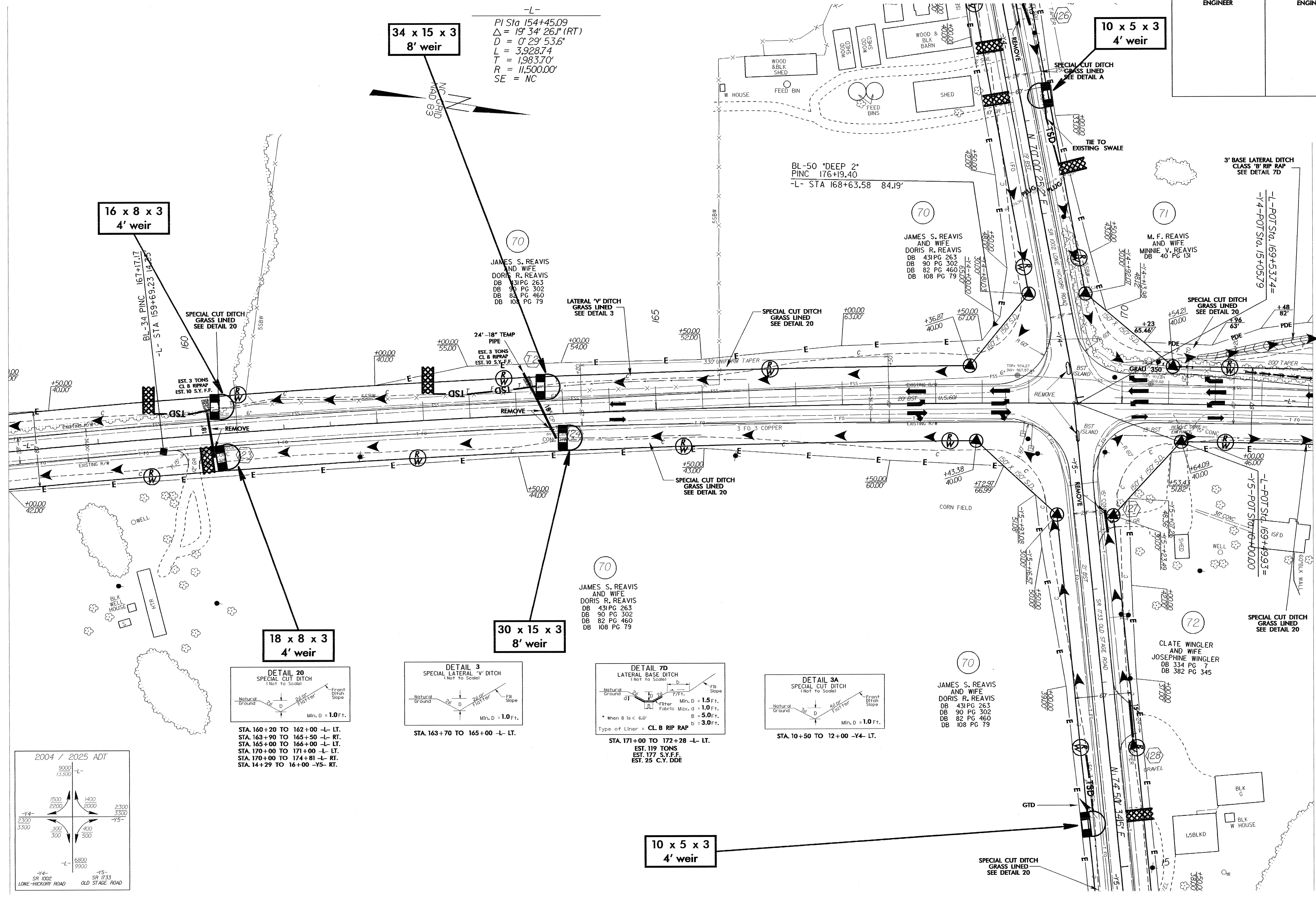


PROJECT REFERENCE NO.		SHEET NO.	
R-3427		EC-37/CONST.15	
RW SHEET NO.			
ROADWAY DESIGN ENGINEER		HYDRAULICS ENGINEER	

7/12/99
 28-SEP-2004 14:21
 C:\revel\p\p\road\ec\37\15\15r-3427.psh
 B:\blackburn

MATCHLINE ** SEE SHEET 14 **

MATCHLINE ** SEE SHEET 16 **



-L-
 PI Sta 154+45.09
 $\Delta = 19' 34' 26.1''$ (RT)
 $D = 0' 29' 53.6''$
 $L = 3,928.74$
 $T = 1,983.70'$
 $R = 11,500.00'$
 $SE = NC$

16 x 8 x 3
 4' weir

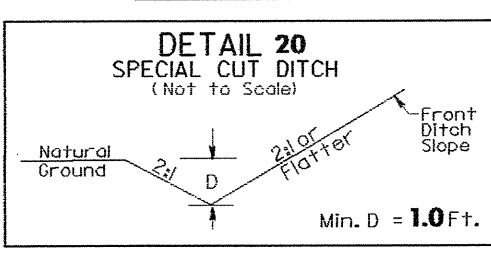
34 x 15 x 3
 8' weir

10 x 5 x 3
 4' weir

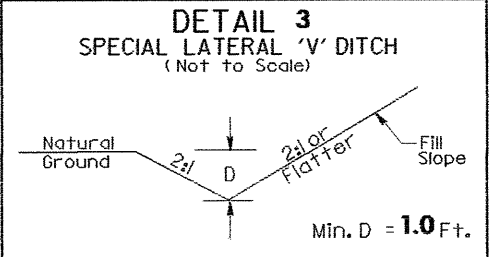
18 x 8 x 3
 4' weir

30 x 15 x 3
 8' weir

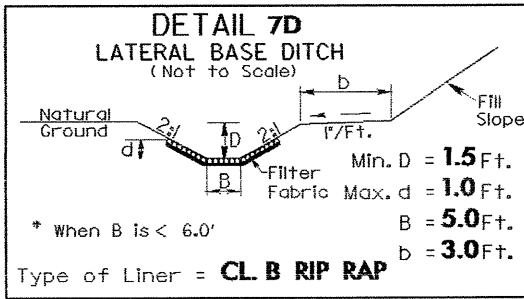
10 x 5 x 3
 4' weir



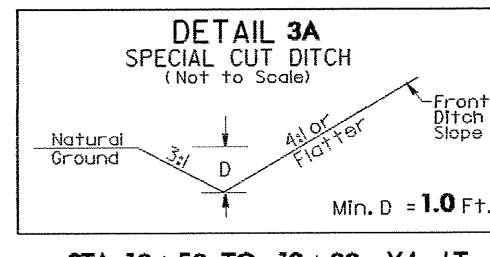
STA. 160+20 TO 162+00 -L- LT.
 STA. 163+90 TO 165+50 -L- RT.
 STA. 165+00 TO 166+00 -L- LT.
 STA. 170+00 TO 171+00 -L- LT.
 STA. 170+00 TO 174+81 -L- RT.
 STA. 14+29 TO 16+00 -Y5- RT.



STA. 163+70 TO 165+00 -L- LT.



STA. 171+00 TO 172+28 -L- LT.
 EST. 119 TONS
 EST. 177 S.Y.F.F.
 EST. 25' C.Y. DDE



STA. 10+50 TO 12+00 -Y4- LT.

