

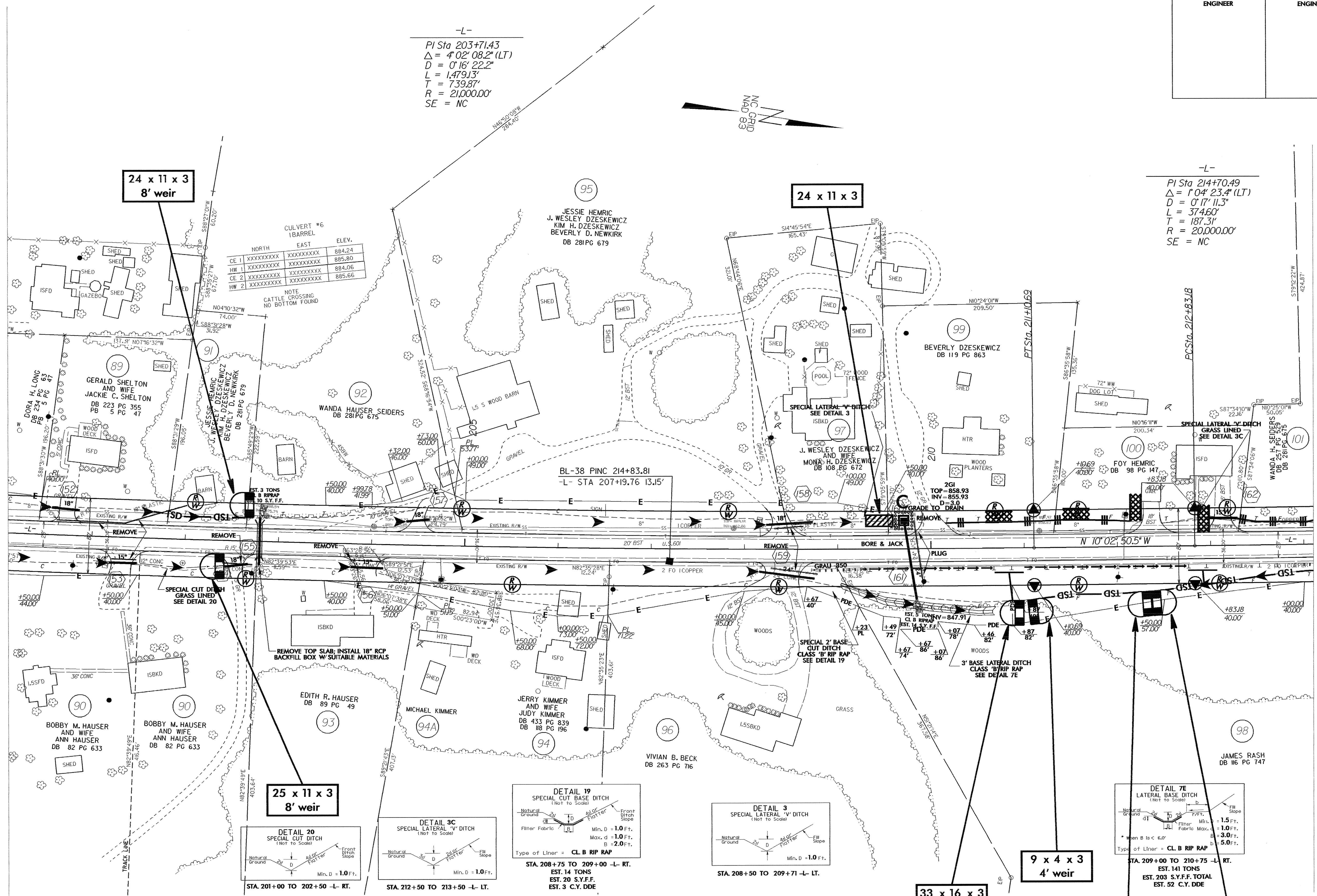
PROJECT REFERENCE NO.		SHEET NO.	
R-3427		EC-40/CONST 18	
RW SHEET NO.			
ROADWAY DESIGN ENGINEER		HYDRAULICS ENGINEER	

-L-
 PI Sta 203+71.43
 $\Delta = 4'02''08.2''$ (LT)
 $D = 0'16''22.2''$
 $L = 1,479.13'$
 $T = 739.87'$
 $R = 21,000.00'$
 SE = NC

-L-
 PI Sta 214+70.49
 $\Delta = 1'04''23.4''$ (LT)
 $D = 0'17''11.3''$
 $L = 374.60'$
 $T = 187.31'$
 $R = 20,000.00'$
 SE = NC

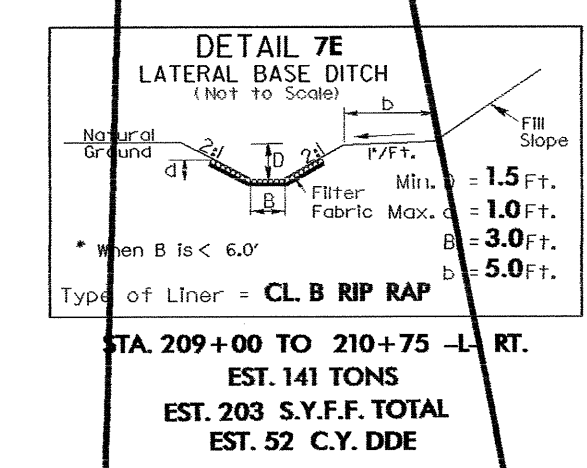
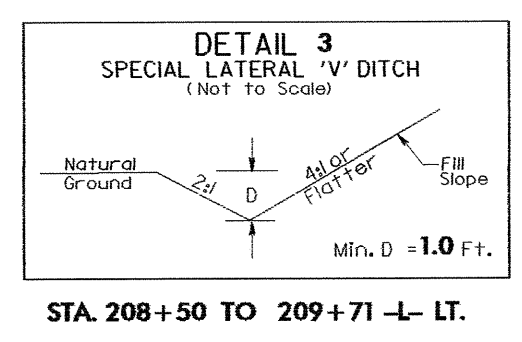
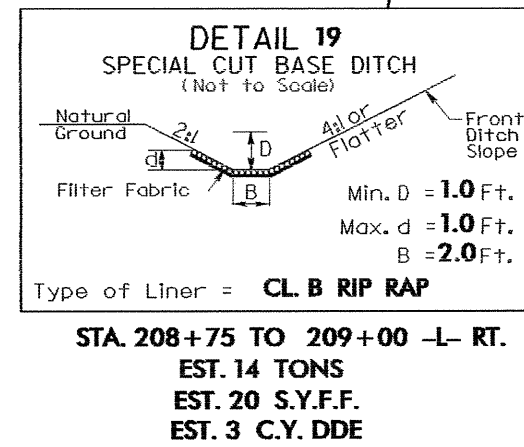
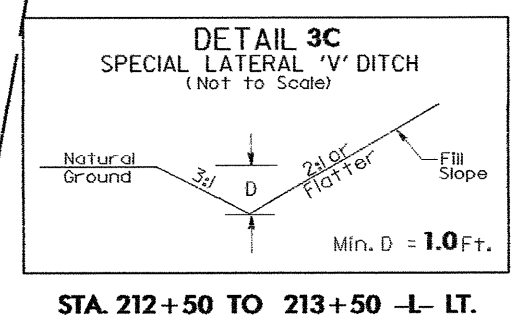
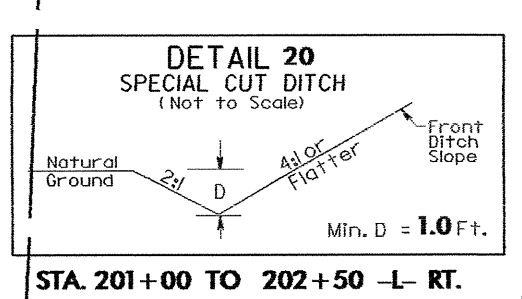
MATCHLINE ** SEE SHEET 17 **

MATCHLINE ** SEE SHEET 19 **



	NORTH	EAST	ELEV.
CE 1	XXXXXXXXXX	XXXXXXXXXX	884.24
HW 1	XXXXXXXXXX	XXXXXXXXXX	885.80
CE 2	XXXXXXXXXX	XXXXXXXXXX	884.06
HW 2	XXXXXXXXXX	XXXXXXXXXX	885.66

NOTE
 CATTLE CROSSING
 NO BOTTOM FOUND



7/12/09
 28-SEP-2004 14:33
 D:\proj\11\p\ur\21\18-3427\Roadway\ps18-3427.dwg
 sblackburn