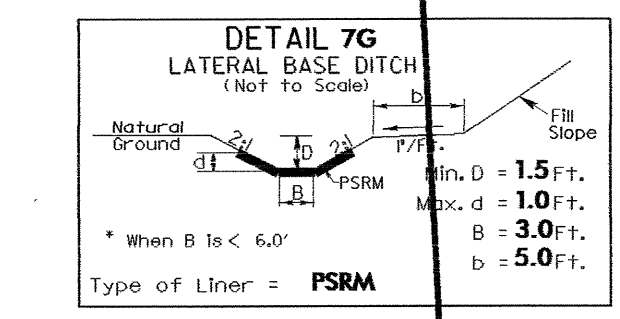
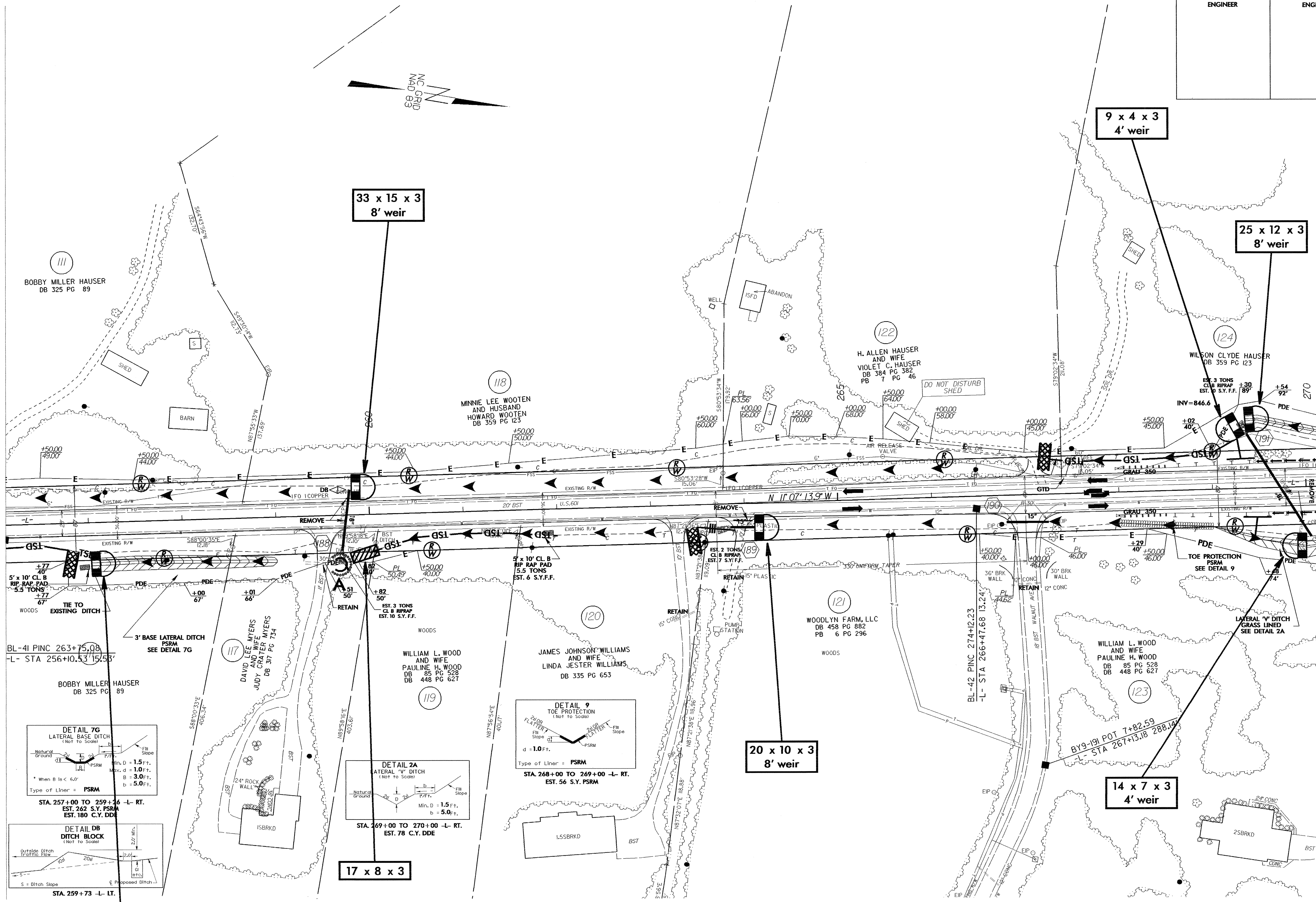


PROJECT REFERENCE NO.	SHEET NO.
R-3427	EC-44/CONST.22
RW SHEET NO.	
ROADWAY DESIGN ENGINEER	HYDRAULICS ENGINEER

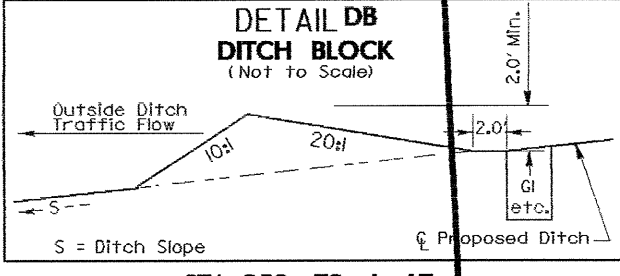
7/12/09

MATCHLINE \*\* SEE SHEET 21 \*\*

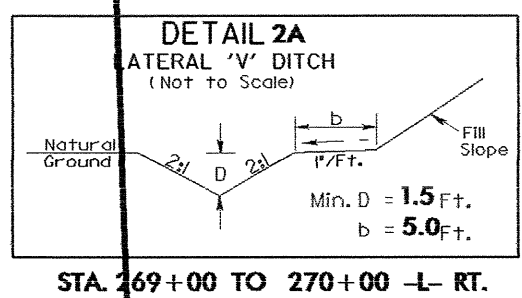
MATCHLINE \*\* SEE SHEET 23 \*\*



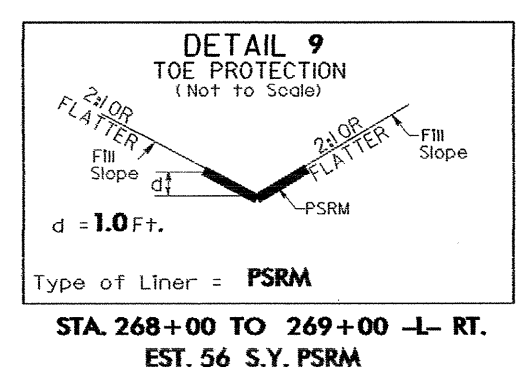
STA. 257+00 TO 259+26 -L- RT.  
EST. 262 S.Y. PSRM  
EST. 180 C.Y. DDE



STA. 259+73 -L- LT.



STA. 269+00 TO 270+00 -L- RT.  
EST. 78 C.Y. DDE



STA. 268+00 TO 269+00 -L- RT.  
EST. 56 S.Y. PSRM

20 x 10 x 3  
8' weir

17 x 8 x 3  
weir

20 x 10 x 3  
8' weir

14 x 7 x 3  
4' weir

33 x 15 x 3  
8' weir

9 x 4 x 3  
4' weir

25 x 12 x 3  
8' weir

08-SEP-2006 15:34 R-3427-Roadway\ps22-r-3427.dwg  
balaekawin