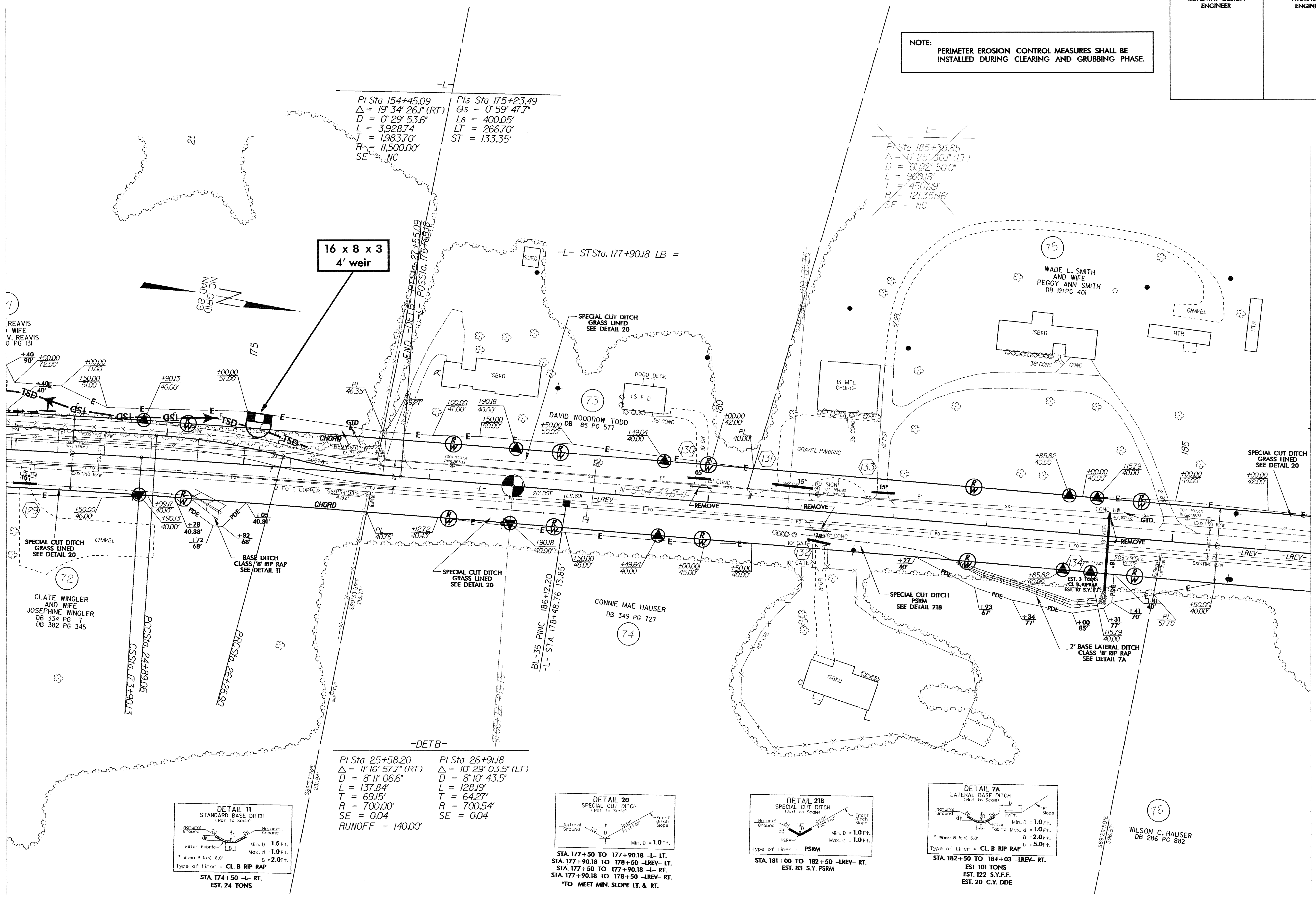


PROJECT REFERENCE NO.	SHEET NO.
R-3427	EC-48/CONST.26
RW SHEET NO.	
ROADWAY DESIGN ENGINEER	HYDRAULICS ENGINEER

NOTE:
PERIMETER EROSION CONTROL MEASURES SHALL BE INSTALLED DURING CLEARING AND GRUBBING PHASE.

MATCHLINE ** SEE SHEET 25 **



PI Sta 154+45.09
 $\Delta = 19^\circ 34' 26.1''$ (RT)
 $D = 0' 29' 53.6''$
 $L = 3,928.74$
 $T = 1,983.70'$
 $R = 11,500.00'$
 $SE = NC$

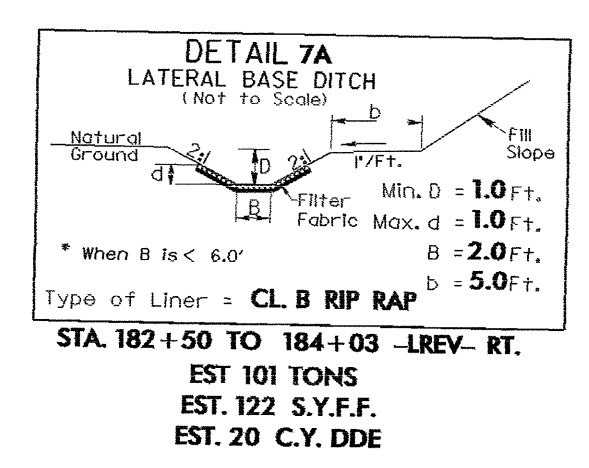
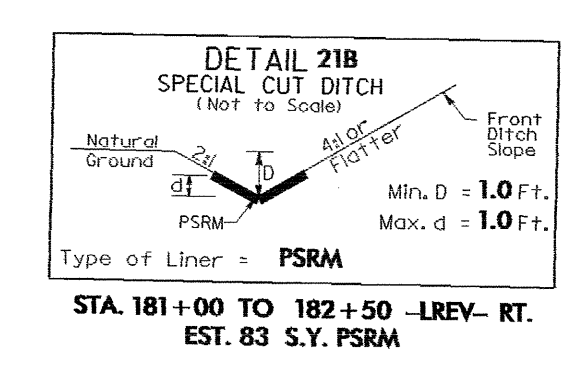
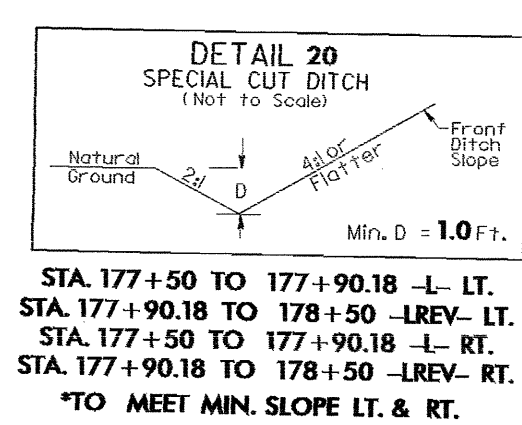
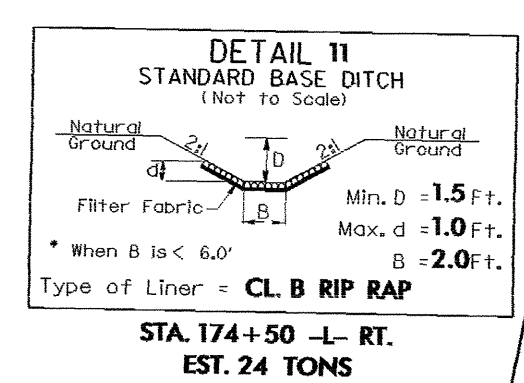
PIs Sta 175+23.49
 $\Theta s = 0' 59' 47.7''$
 $Ls = 400.05'$
 $LT = 266.70'$
 $ST = 133.35'$

PI Sta 185+35.85
 $\Delta = 0' 25' 30.1''$ (LT)
 $D = 0' 02' 50.0''$
 $L = 906.18'$
 $T = 450.89'$
 $R = 121,351.6'$
 $SE = NC$

16 x 8 x 3
4' weir

PI Sta 25+58.20
 $\Delta = 11^\circ 16' 57.7''$ (RT)
 $D = 8' 11' 06.6''$
 $L = 137.84'$
 $T = 69.15'$
 $R = 700.00'$
 $SE = 0.04$
 RUNOFF = 140.00'

PI Sta 26+91.8
 $\Delta = 10^\circ 29' 03.5''$ (LT)
 $D = 8' 10' 43.5''$
 $L = 128.19'$
 $T = 64.27'$
 $R = 700.54'$
 $SE = 0.04$



7/2/99

2A-SEP-2004 17:51 R-3427\Roadway\ps26DETBr-3427.rps
 bbackburn