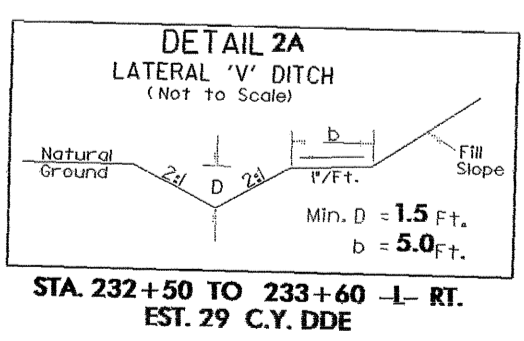
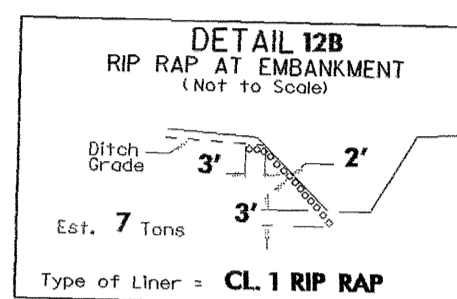
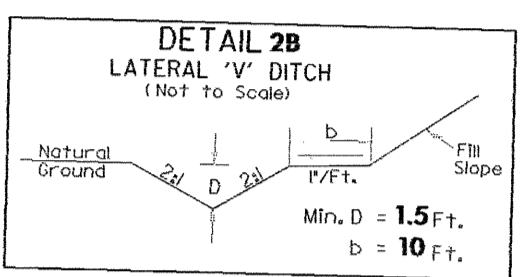
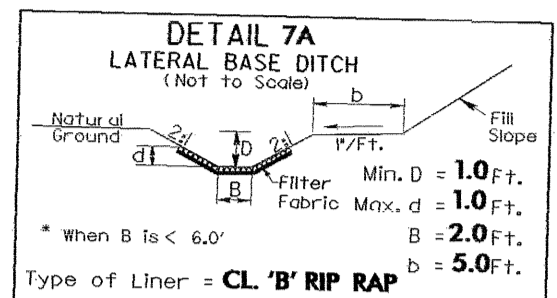
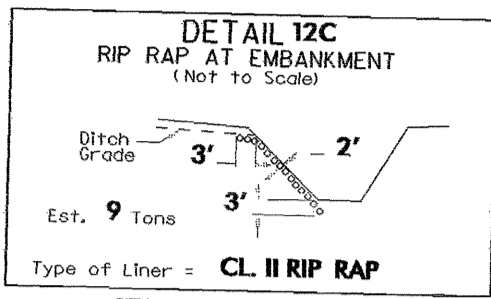
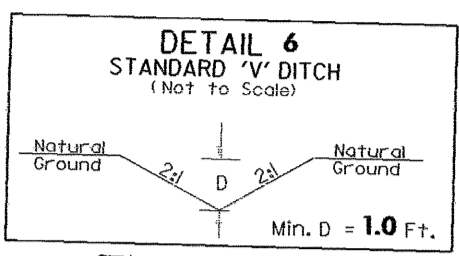
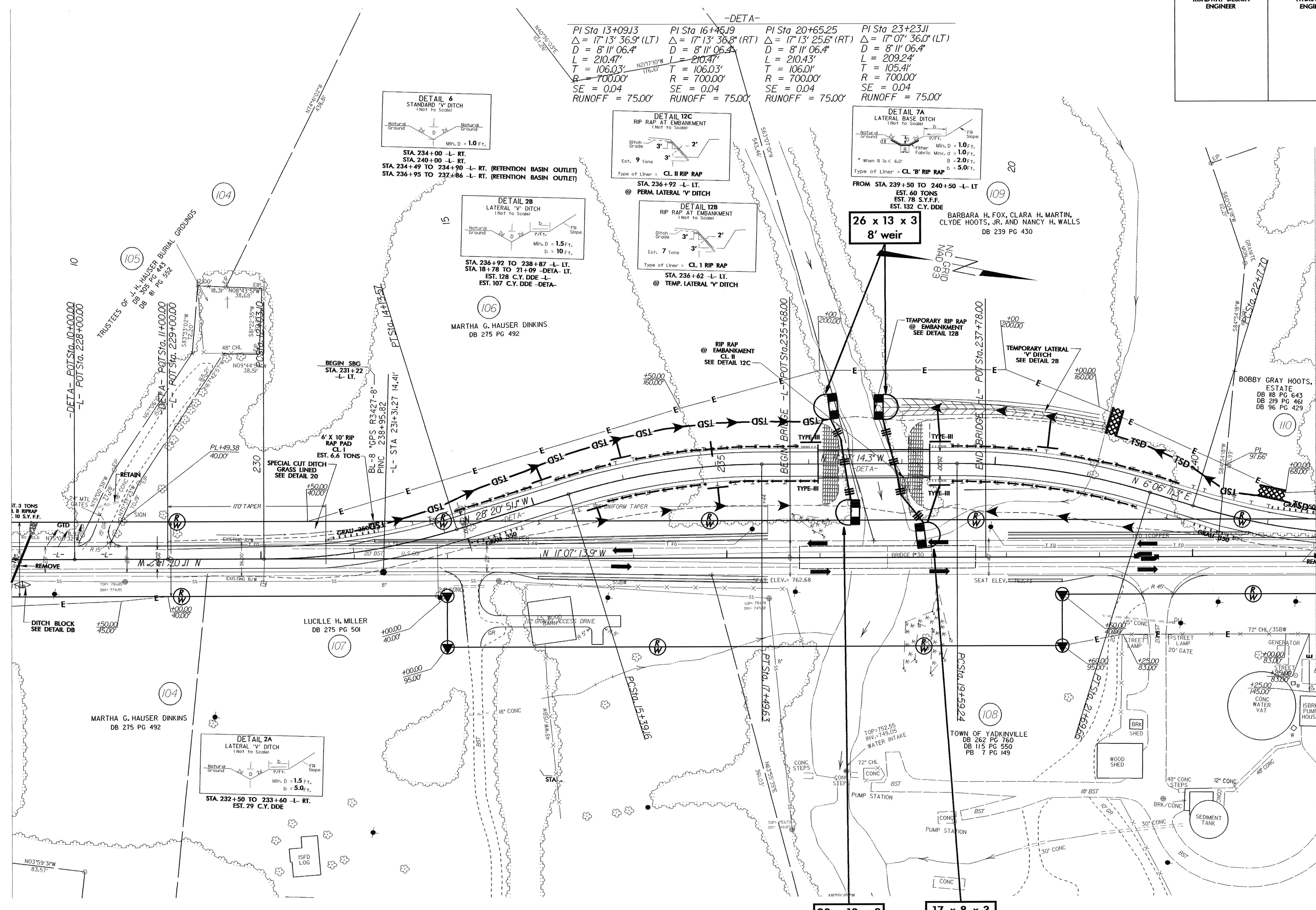


PROJECT REFERENCE NO. R-3427	SHEET NO. EC-49/CONST.27
RW SHEET NO.	
ROADWAY DESIGN ENGINEER	HYDRAULICS ENGINEER

-DETA-

PI Sta 13+09.13 Δ = 17° 13' 36.9" (LT) D = 8' 11" 06.4" L = 210.47' T = 106.03' R = 700.00' SE = 0.04 RUNOFF = 75.00'	PI Sta 16+45.19 Δ = 17° 13' 36.8" (RT) D = 8' 11" 06.4" L = 210.47' T = 106.03' R = 700.00' SE = 0.04 RUNOFF = 75.00'	PI Sta 20+65.25 Δ = 17° 13' 25.6" (RT) D = 8' 11" 06.4" L = 210.43' T = 105.41' R = 700.00' SE = 0.04 RUNOFF = 75.00'	PI Sta 23+23.11 Δ = 17° 07' 36.0" (LT) D = 8' 11" 06.4" L = 209.24' T = 105.41' R = 700.00' SE = 0.04 RUNOFF = 75.00'
--	--	--	--



26 x 13 x 3
8' weir

20 x 10 x 3
8' weir

17 x 8 x 3
8' weir

7/27/99
28-SEP-2004 17:53
D:\reut\p\ur\ec-49\Roadway\ps27\deto-ar-3427.rps
bb\ackburn

MATCHLINE ** SEE SHEET 28 **