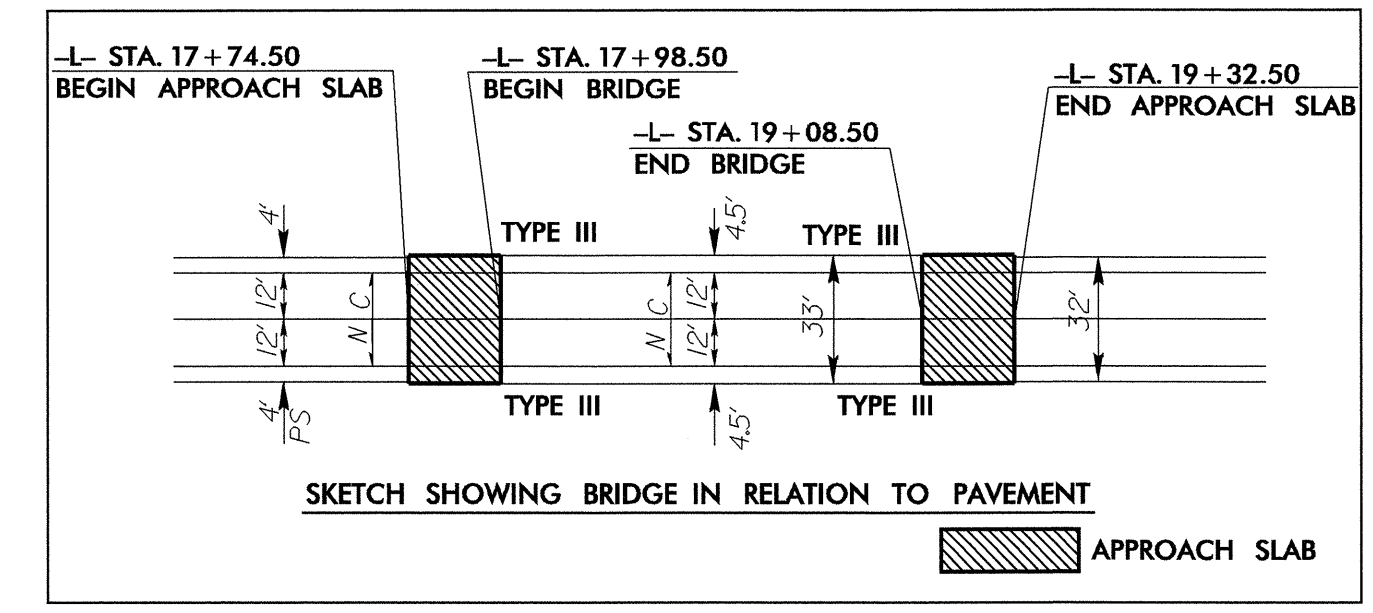


PROJECT REFERENCE NO. B-3711	SHEET NO. 4
RW SHEET NO.	
ROADWAY DESIGN ENGINEER	HYDRAULICS ENGINEER



SEE SHEET 8 FOR -L- PROFILE

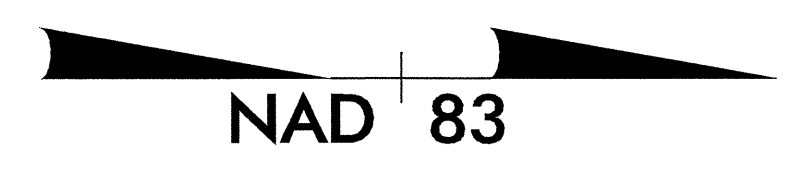
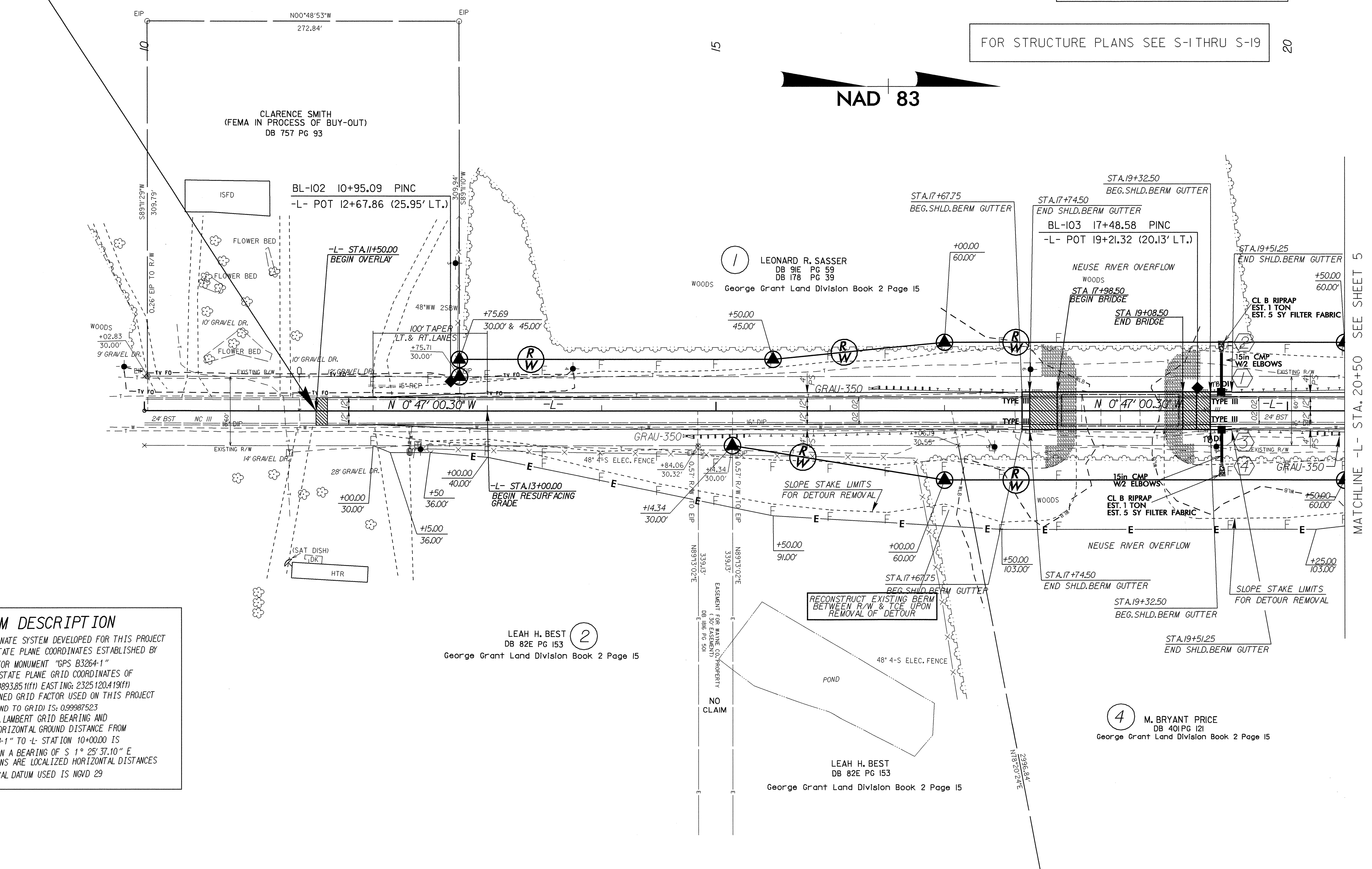
FOR STRUCTURE PLANS SEE S-1 THRU S-19

-L- STA. 11+50.00 BEGIN STATE TIP NO. B-3711

BL-101 5+00.00 POT
 -L- POT 10+00.00 LOCATED AT A BEARING OF S 2° 25' 27.2305" W, 327.6973'.

TBM #1
 -BL- 5+73.58
 32.97' LT.
 ELEV. = 58.27'

DATUM DESCRIPTION
 THE LOCALIZED COORDINATE SYSTEM DEVELOPED FOR THIS PROJECT IS BASED ON THE STATE PLANE COORDINATES ESTABLISHED BY NCDOT FOR MONUMENT "GPS B3264-1" WITH NAD 83 STATE PLANE GRID COORDINATES OF NORTHING: 554893.85 (11) EASTING: 2325120.419 (11) THE AVERAGE COMBINED GRID FACTOR USED ON THIS PROJECT (GROUND TO GRID) IS: 0.99987523 THE N.C. LAMBERT GRID BEARING AND LOCALIZED HORIZONTAL GROUND DISTANCE FROM "GPS B3264-1" TO -L- STATION 10+00.00 IS 1575.12 FEET ON A BEARING OF S 1° 25' 37.10" E ALL LINEAR DIMENSIONS ARE LOCALIZED HORIZONTAL DISTANCES VERTICAL DATUM USED IS NGVD 29



MATCHLINE -L- STA. 20+50 SEE SHEET 5