

8/17/99

PROJECT REFERENCE NO. B-3711	SHEET NO. 6
RW SHEET NO.	
ROADWAY DESIGN ENGINEER 	HYDRAULICS ENGINEER

-L- STA. 11+50.00 BEGIN STATE TIP NO. B-3711

-DET-

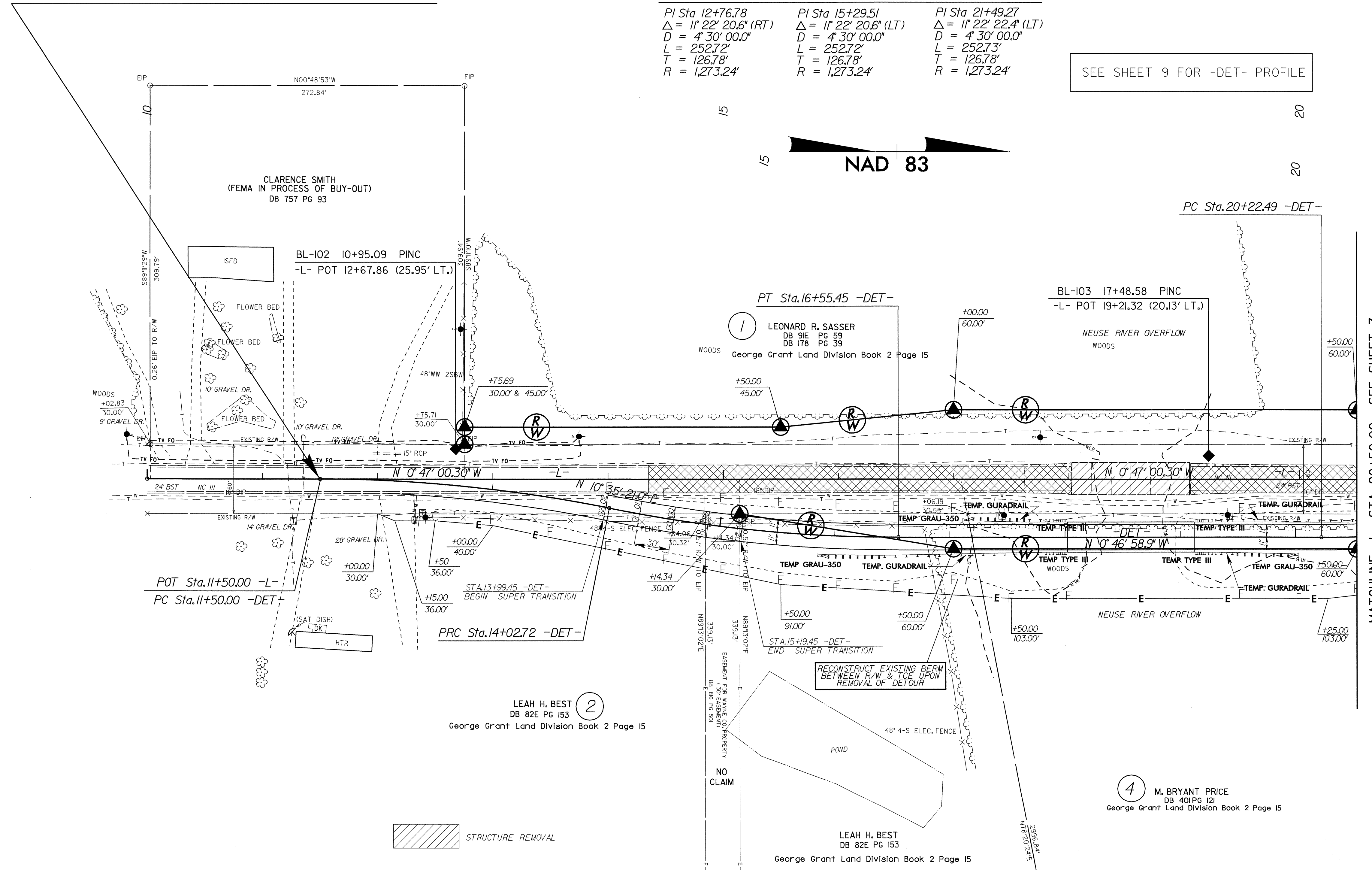
PI Sta 12+76.78 Δ = 1° 22' 20.6" (RT) D = 4' 30' 00.0" L = 252.72' T = 126.78' R = 1,273.24'	PI Sta 15+29.51 Δ = 1° 22' 20.6" (LT) D = 4' 30' 00.0" L = 252.72' T = 126.78' R = 1,273.24'	PI Sta 21+49.27 Δ = 1° 22' 22.4" (LT) D = 4' 30' 00.0" L = 252.73' T = 126.78' R = 1,273.24'
---	---	---

SEE SHEET 9 FOR -DET- PROFILE



BL-101 5+00.00 POT
-L- POT 10+00.00 LOCATED AT A BEARING OF S 2° 25' 27.2305" W, 327.6973'.

TBM #1
-BL- 5+73.58
32.97' LT.
ELEV. = 58.27'



MATCHLINE -L- STA. 20+50.00 SEE SHEET 7

20-SEP-2007 10:41
C:\WORK\B-3711\B-3711.dwg
masm