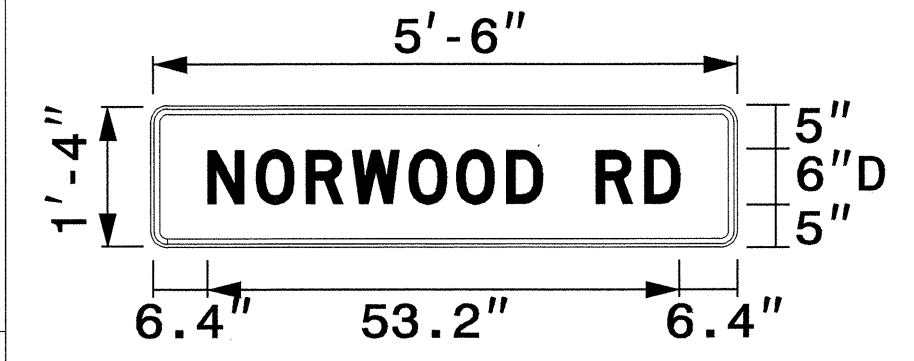


SIGN NUMBER: SPO5500	BACKG COLOR: Orange
TYPE: D	COPY COLOR: Black
QUANTITY: 8	
SIGN WIDTH: 66"	SYMBOL
HEIGHT: 16"	X Y WID HT
TOTAL AREA: 7.3 Sq.Ft.	
BORDER TYPE: FLUSH	
RECESS: 0.38"	
WIDTH: 0.63"	
RADIUS: 1.5"	
NO. Z BARS:	MAT'L: 0.125" (3.2 mm) ALUMINUM
LENGTH:	

DESIGN BY: R. HENNEIN
 PROJECT ID: B-3704
 CHECKED BY: DIV: 5
 STD #: 0
 DATE: Sep 30, 2003

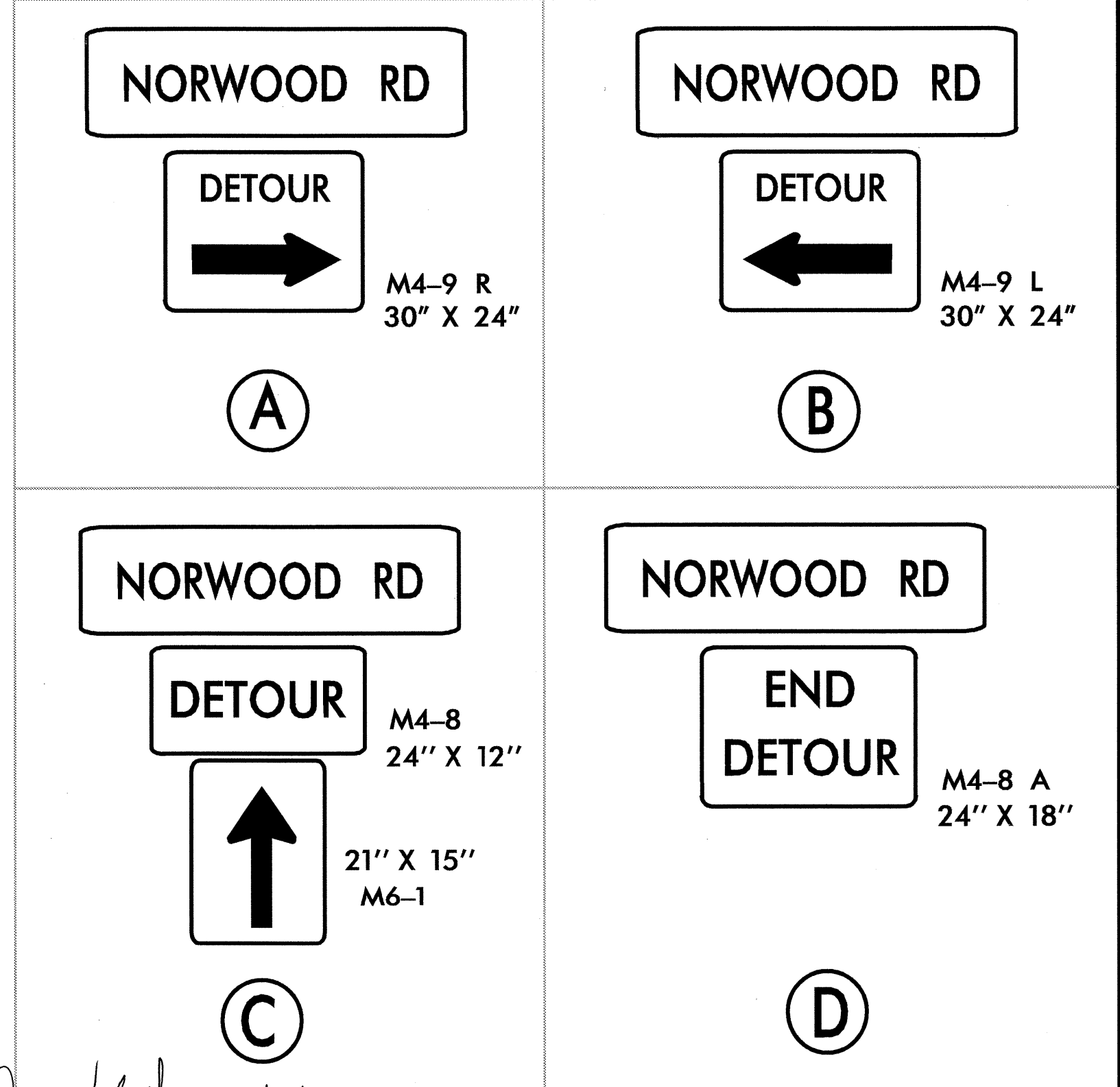
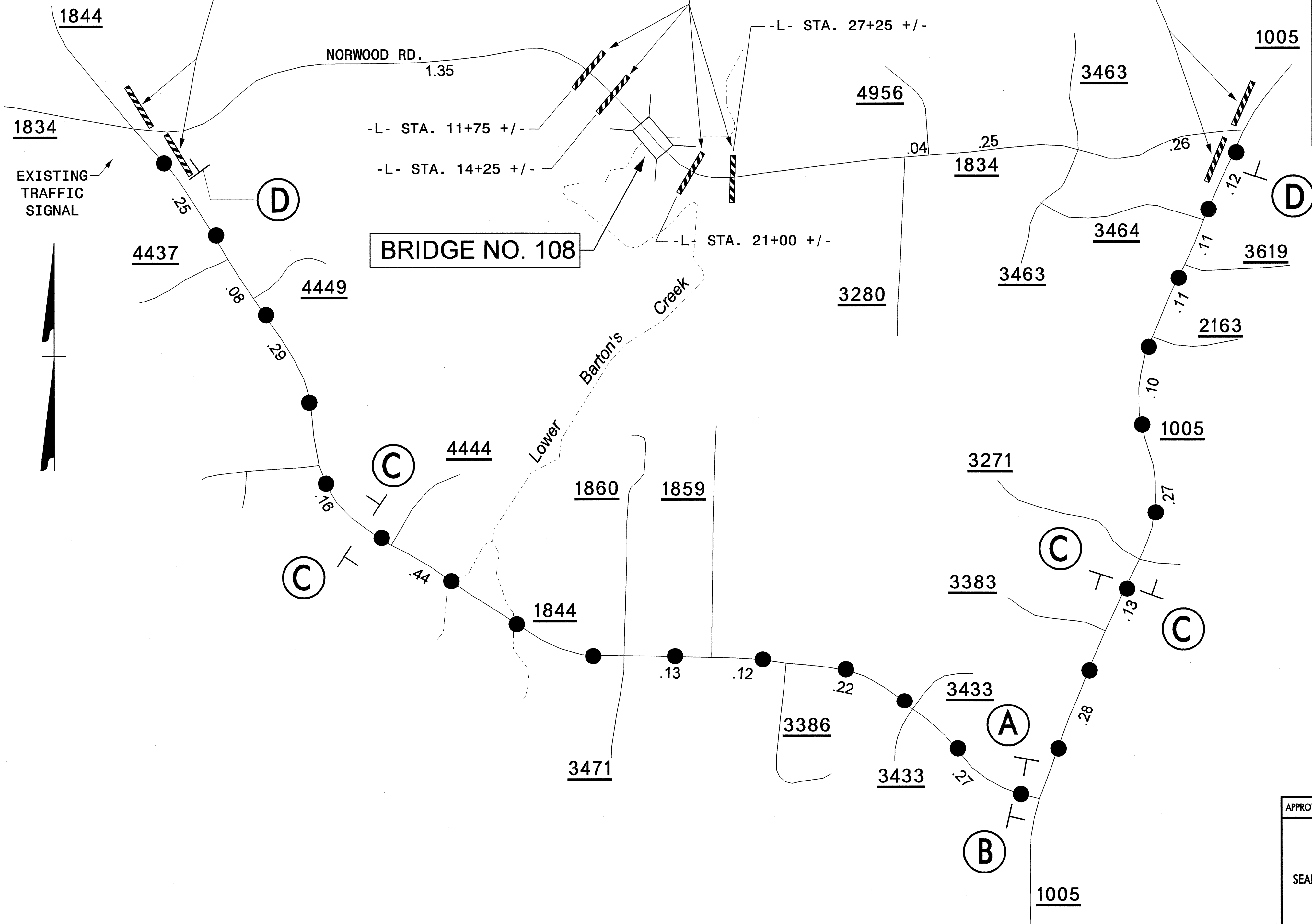


USE NOTES:
 1. Background shall be Type III reflective sheeting.

LETTER POSITIONS

Letter spacings are to start of next letter										Series/Size		
N	O	R	W	O	O	D	R	D		Text Length		
6.4	5.5	5.7	5.2	6.4	5.4	5.7	4	6	5.5	4	6.4	D6
												S3.2

Spacing Factor is 1 unless specified otherwise



APPROVED: *J.W. Woodard* DATE: 1/29/04

SEAL:

SCALE: NONE
 DATE: 11/20/03
 DWG. BY: KPB
 DESIGN BY: KPB
 REVIEWED BY: JWW

REVISIONS

CADD FILE

29-JAN-2004 07:23
 H:\TCP\B3704\CP\PR1.dgn
 Kbr\odowell AT TELC207913