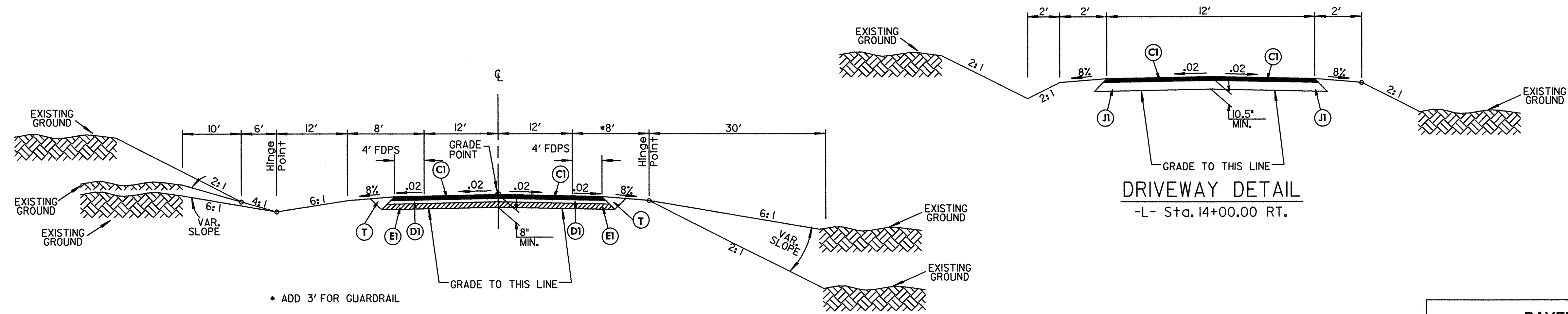
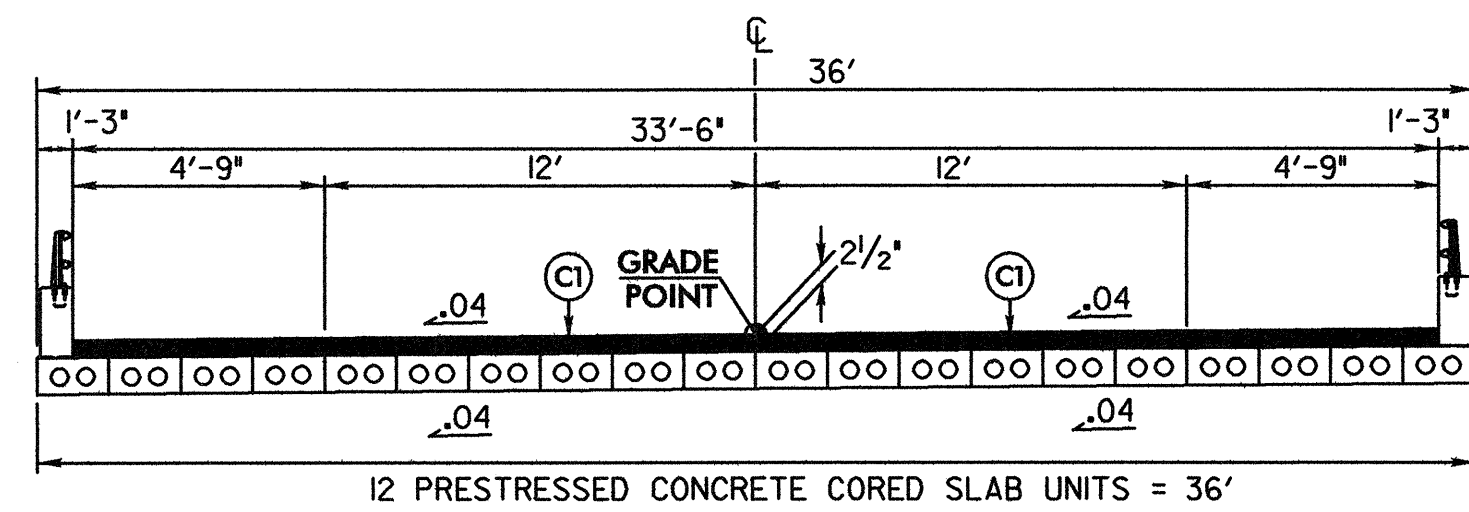


PROJECT REFERENCE NO. B-3704	SHEET NO. 2
ROADWAY DESIGN ENGINEER SEAL 22999 10-13-04	PAVEMENT DESIGN ENGINEER SEAL 17883 10/19/04
	HYDRAULICS ENGINEER SEAL 7521 10-14-04



* ADD 3' FOR GUARDRAIL

TYPICAL SECTION NO. 1
USE TYPICAL SECTION NO. 1 AS FOLLOWS
-L- Sta. 11+75.00 to Sta. 16+30.00 (BRIDGE)
-L- Sta. 17+80.00 (BRIDGE) to Sta. 27+25.00

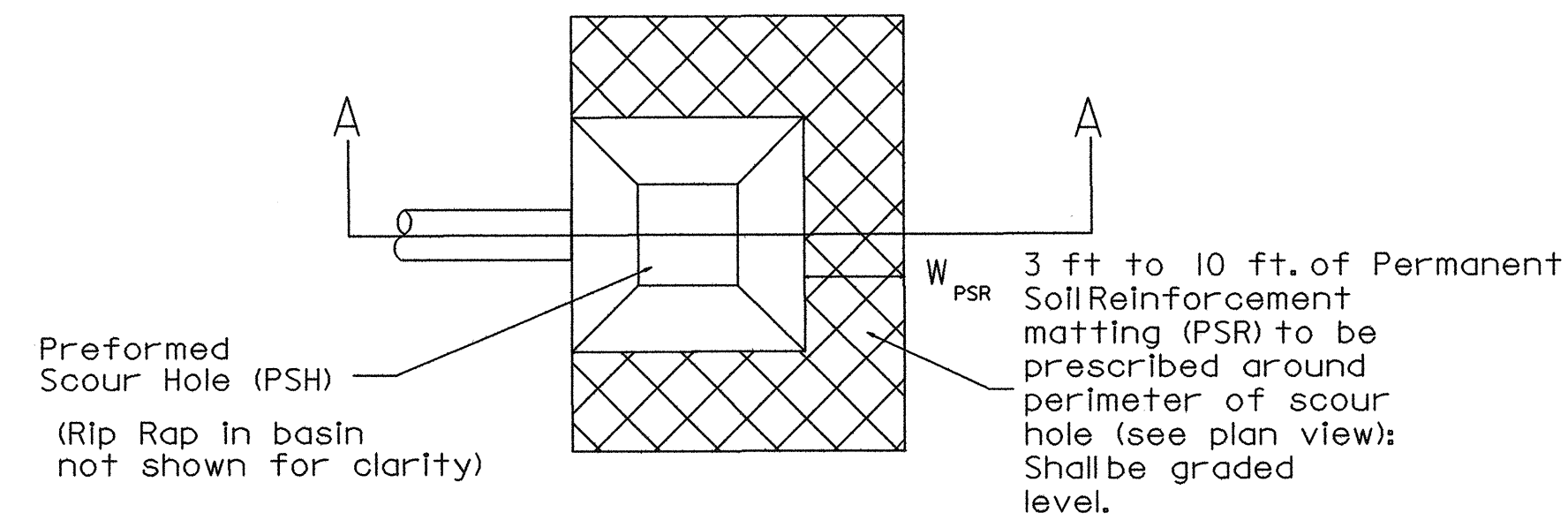


TYPICAL BRIDGE SECTION
Sta. 16+30.00 to Sta. 17+80.00

PAVEMENT SCHEDULE	
C1	PROP. APPROX. 2.5" ASPHALT CONC. SURFACE COURSE, TYPE SF9.5A, AT AN AVERAGE RATE OF 137.5 LBS PER SQ. YD. IN EACH OF TWO LAYERS.
D1	PROP. APPROX. 2.5" ASPHALT CONC. INTERMEDIATE COURSE, TYPE I19.0B, AT AN AVERAGE RATE OF 285 LBS PER SQ. YD.
E1	PROP. APPROX. 3.0" ASPHALT CONC. BASE COURSE, TYPE B25.0B, AT AN AVERAGE RATE OF 342 LBS PER SQ. YD.
J1	8" AGGREGATE BASE COURSE
T	EARTH MATERIAL

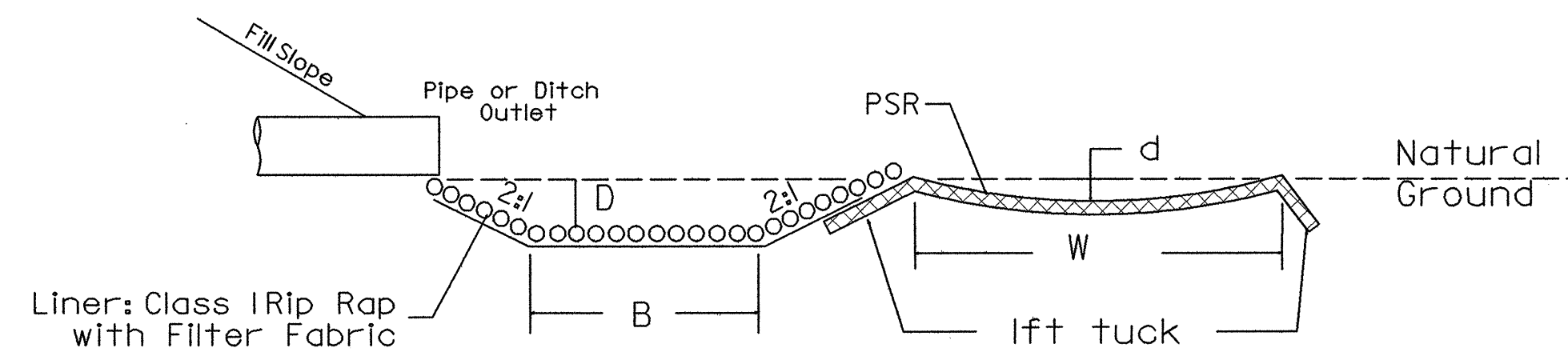
NOTE: ALL SLOPES 1:1 UNLESS OTHERWISE SPECIFIED

PREFORMED SCOUR HOLE
(Not to scale)



STATION	B FT	D FT	W _{PSR} FT	d FT
16+19 -L- LT.	3.75	1	4	0.5
18+05 -L- RT.	3.75	3.50	4	0.5
19+00 -L- LT.	3.75	2.75	4	0.5

Section A-A



NOTE: "B" denotes size of basin;
For example: 5ft x 5ft PSH, B=5

NOTE: The Permanent Soil Reinforcement matting (PSR) shall be seeded with native grasses at installation.

