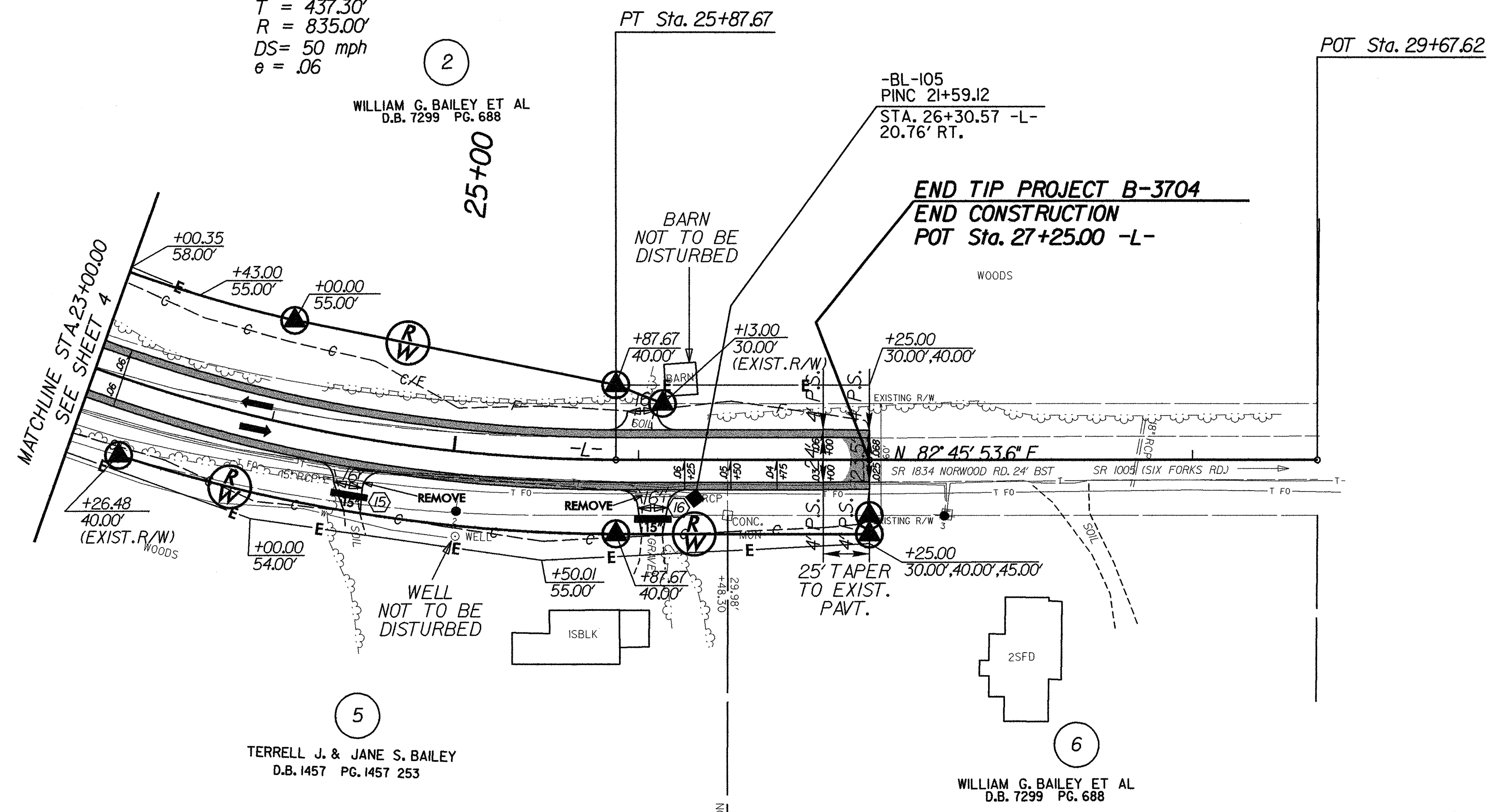


-L-
 PI Sta 22+19.31
 $\Delta = 55' 16" 57.7" (LT)$
 $D = 6' 51" 42.4"$
 $L = 805.66'$
 $T = 437.30'$
 $R = 835.00'$
 $DS = 50 \text{ mph}$
 $e = .06$



5
 TERRELL J. & JANE S. BAILEY
 D.B. 1457 PG. 1457 253

6
 WILLIAM G. BAILEY ET AL
 D.B. 7299 PG. 688

