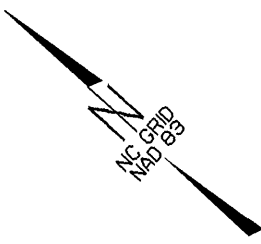
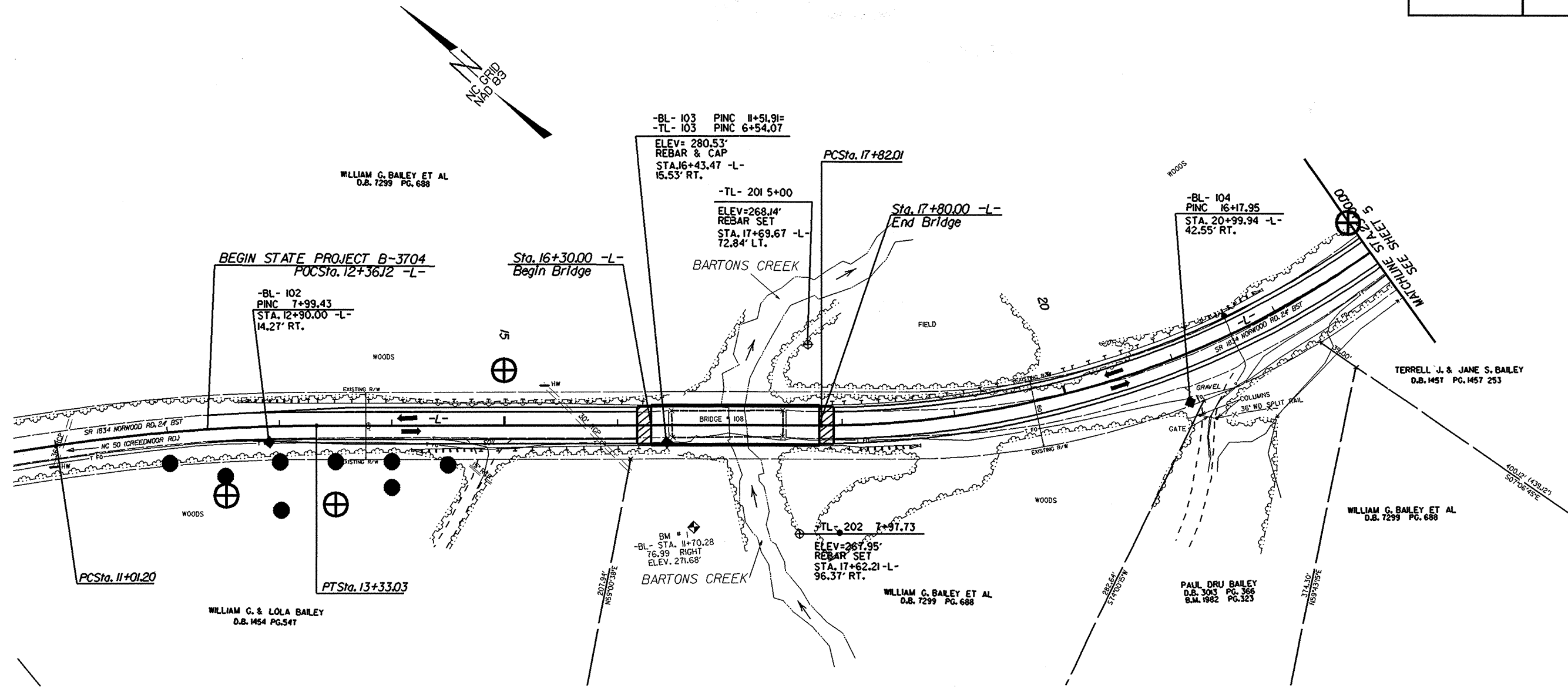


PROJECT REFERENCE NO. B-3704	SHEET NO. 4
RW SHEET NO.	
ROADWAY DESIGN ENGINEER	HYDRAULICS ENGINEER
PRELIMINARY PLANS DO NOT USE FOR CONSTRUCTION	
INCOMPLETE PLANS DO NOT USE FOR R/W ACQUISITION	



WILLIAM G. BAILEY ET AL
D.B. 7299 PG. 688

TERRELL J. & JANE S. BAILEY
D.B. 1457 PG. 1457 253

WILLIAM G. & LOLA BAILEY
D.B. 1454 PG. 547

WILLIAM G. BAILEY ET AL
D.B. 7299 PG. 688

PAUL DRU BAILEY
D.B. 3013 PG. 356
S.M. 1982 PG. 323

WILLIAM G. BAILEY ET AL
D.B. 7299 PG. 688

PCSta. 11+01.20

PTSta. 13+33.03

TL-202 7+97.73

ELEV=267.95'
REBAR SET
STA. 17+62.21 -L-
96.37' RT.

BM # 1
-BL- STA. 11+70.28
76.99 RIGHT
ELEV. 271.68'

-BL- 104
PINC 16+17.95
STA. 20+99.94 -L-
42.55' RT.

-BL- 103 PINC 11+51.91=
-TL- 103 PINC 6+54.07
ELEV= 280.53'
REBAR & CAP
STA. 16+43.47 -L-
15.53' RT.

BEGIN STATE PROJECT B-3704
PCSta. 12+36.12 -L-

Sta. 16+30.00 -L-
Begin Bridge

PCSta. 17+82.01

Sta. 17+80.00 -L-
End Bridge

MANHOLE STA. 16+00.00
SEE SHEET 5

400.12' (438.12)
507.06' (515)

SR 1834 NORWOOD RD. 24' EST
MC 50 (CREEDMOOR RD)

SR 184 NORWOOD RD. 24' EST
36' WD SPLIT RAIL

BRIDGE 108

GATE

COLUMNS

207.94'
185700737E

282.84'
37470257E

374.30'
18574375E

51

20

WOODS

WOODS

WOODS

WOODS

FIELD

BARTONS CREEK

BARTONS CREEK

DELOP

EXISTING R/W

EXISTING R/W

HW

HW

51

