

NOTES

PIPE DRAINS MAY BE SHIFTED SLIGHTLY AS NECESSARY TO CLEAR REINFORCING STEEL.

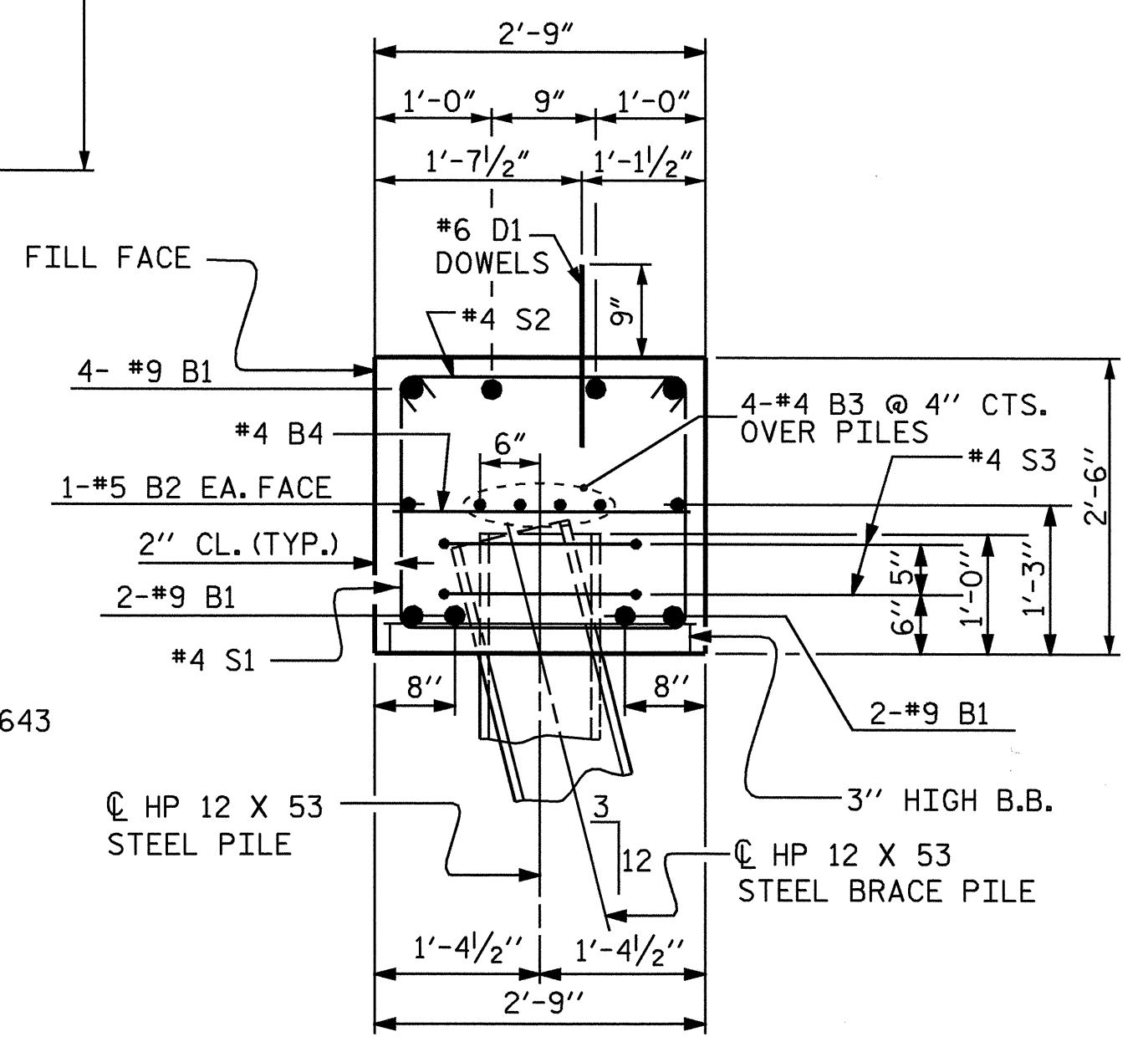
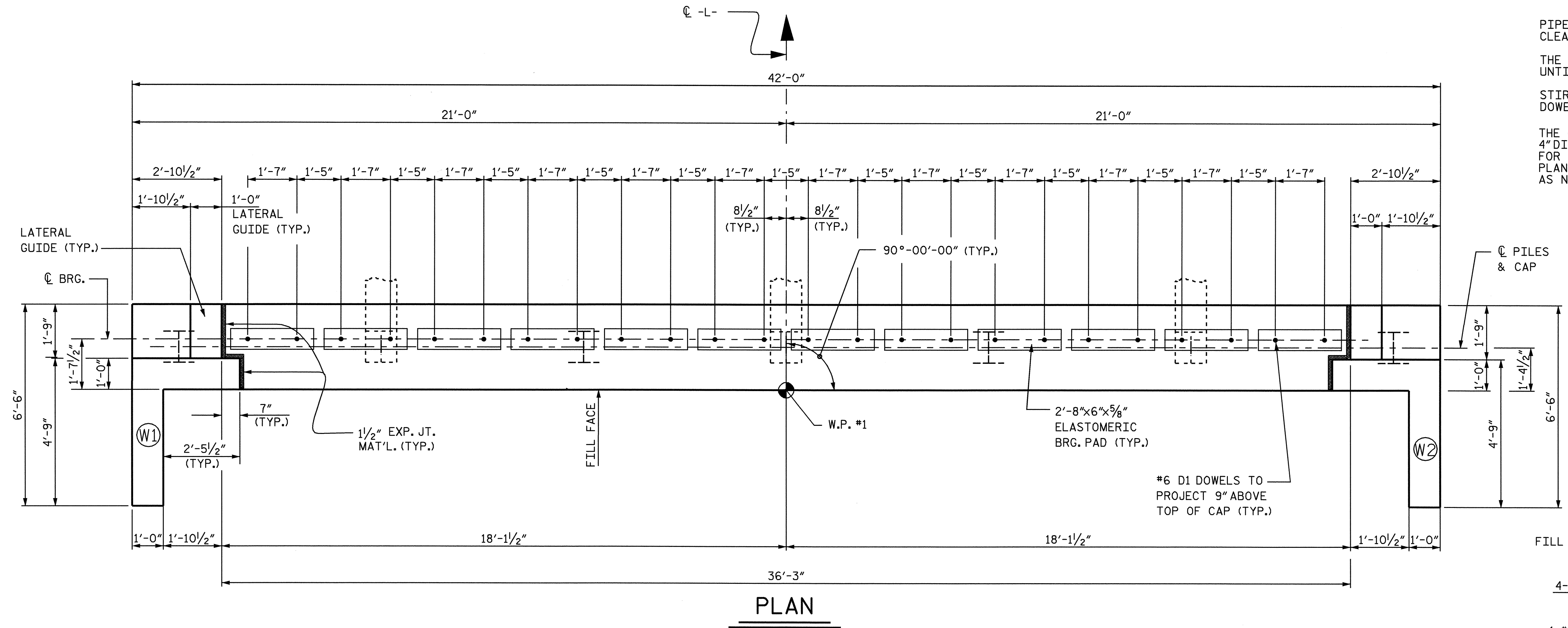
THE LATERAL GUIDE AT ENDS OF CAP IS NOT TO BE POURED UNTIL AFTER CORED SLAB UNITS ARE IN PLACE.

STIRRUPS IN CAP MAY BE SHIFTED AS NECESSARY TO CLEAR DOWELS.

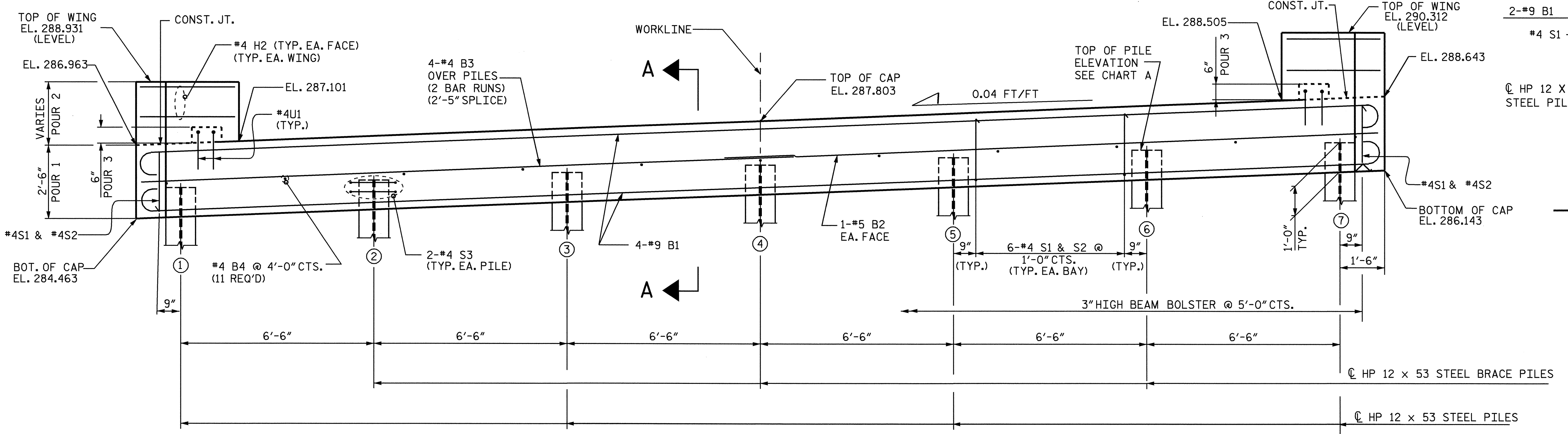
THE CONTRACTOR SHALL PROVIDE FOR INSTALLATION OF THE 4" DIAMETER DRAIN PIPE THROUGH THE WING WALL AS REQUIRED FOR REINFORCED BRIDGE APPROACH FILLS, SEE THE ROADWAY PLANS. REINFORCING STEEL IN THE WING WALL MAY BE SHIFTED AS NECESSARY TO CLEAR THE DRAIN PIPE.

PILE #	TOP OF PILE ELEVATION
1	285.523
2	285.783
3	286.043
4	286.303
5	286.563
6	286.823
7	287.083

CHART A



SECTION A-A



ELEVATION

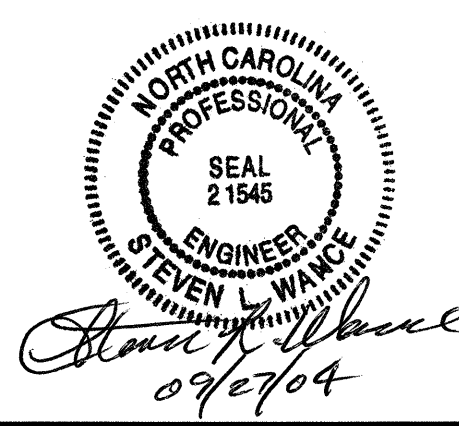
PROJECT NO. B-3704
 WAKE COUNTY
 STATION: 17+05.00 -L-

SHEET 1 OF 2

STATE OF NORTH CAROLINA
 DEPARTMENT OF TRANSPORTATION
 RALEIGH

**SUBSTRUCTURE
 END BENT #1**

REVISIONS						SHEET NO.
NO.	BY:	DATE:	NO.	BY:	DATE:	TOTAL SHEETS
1			3			5-13
2			4			23



DRAWN BY: SWANCEPE DATE: 01/20/04
 CHECKED BY: N.Q. TRAN DATE: 04/20/04