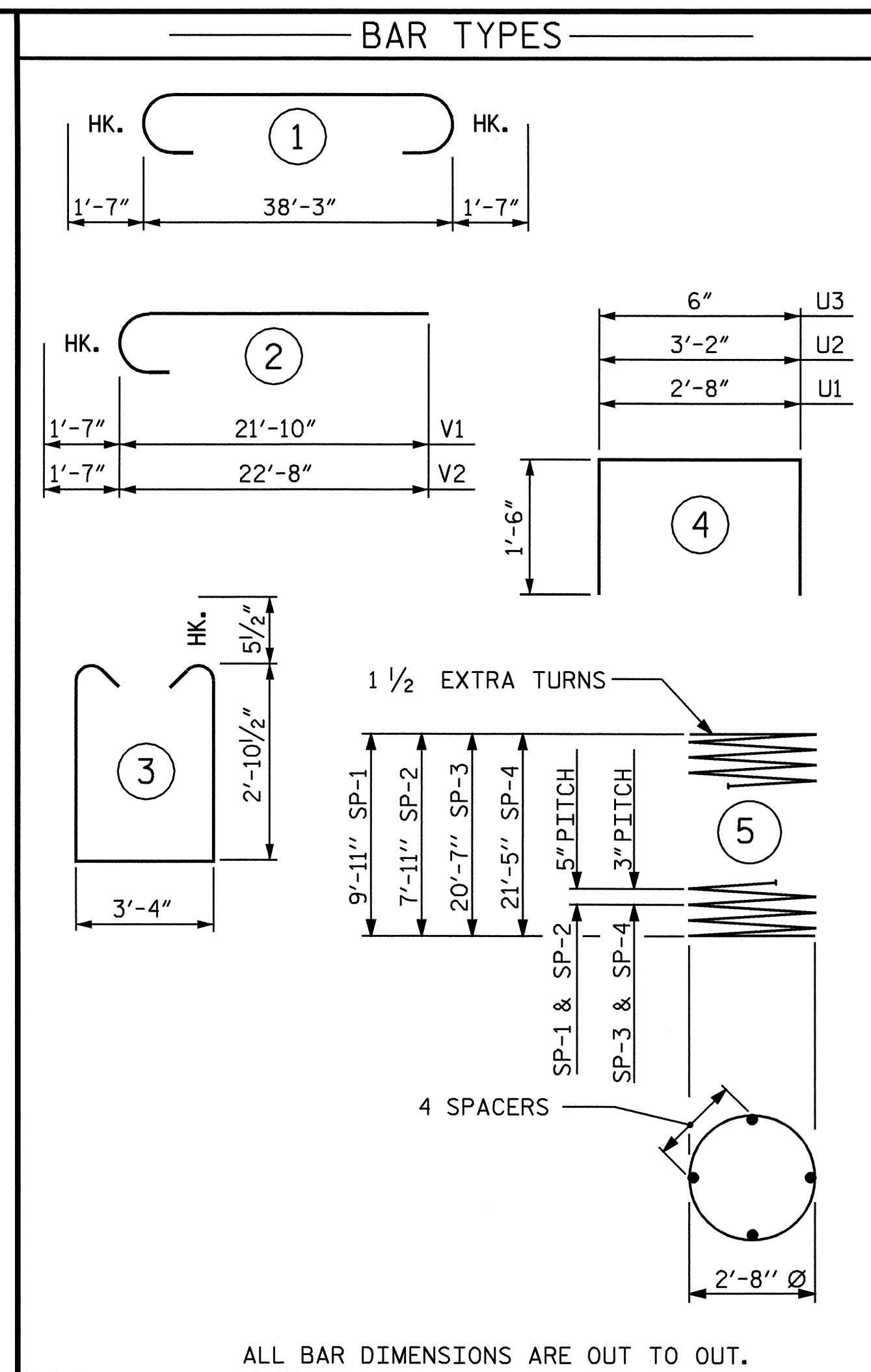


**PLAN OF COLUMNS AND DRILLED PIERS**

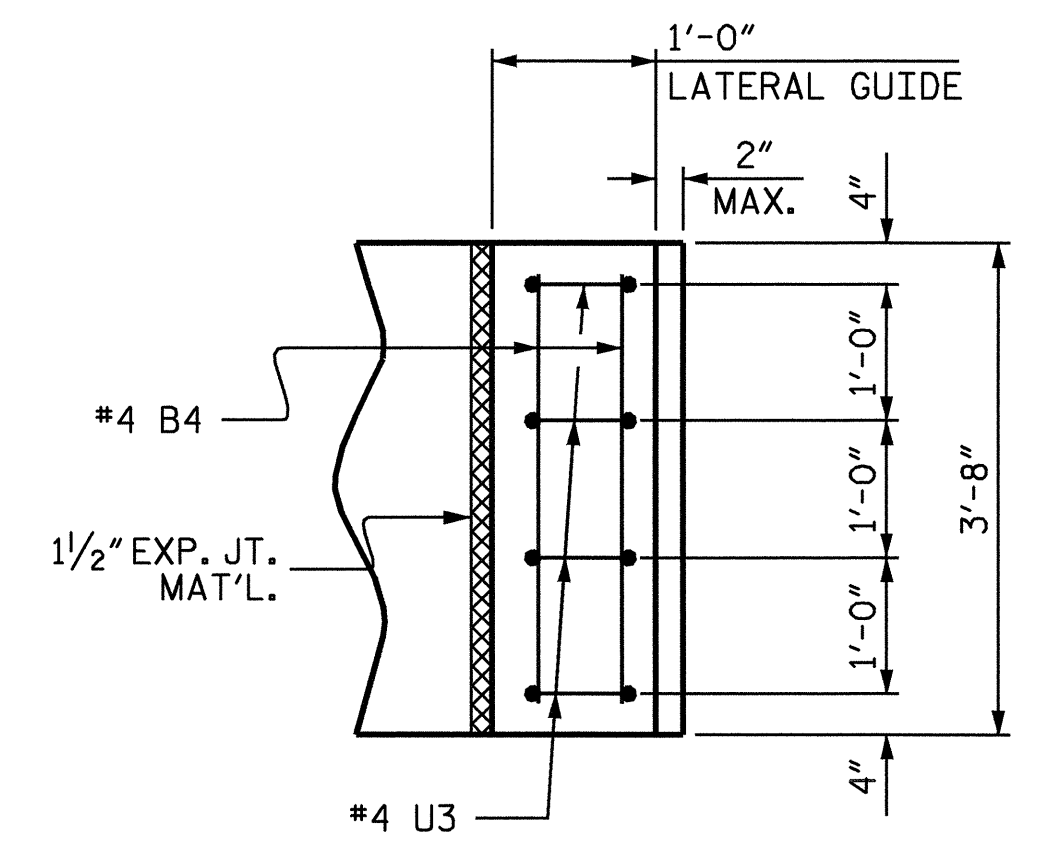
(ALL DIMENSIONS AND REINFORCING STEEL ARE TYPICAL FOR ALL COLUMNS AND DRILLED PIERS)



**BILL OF MATERIAL**

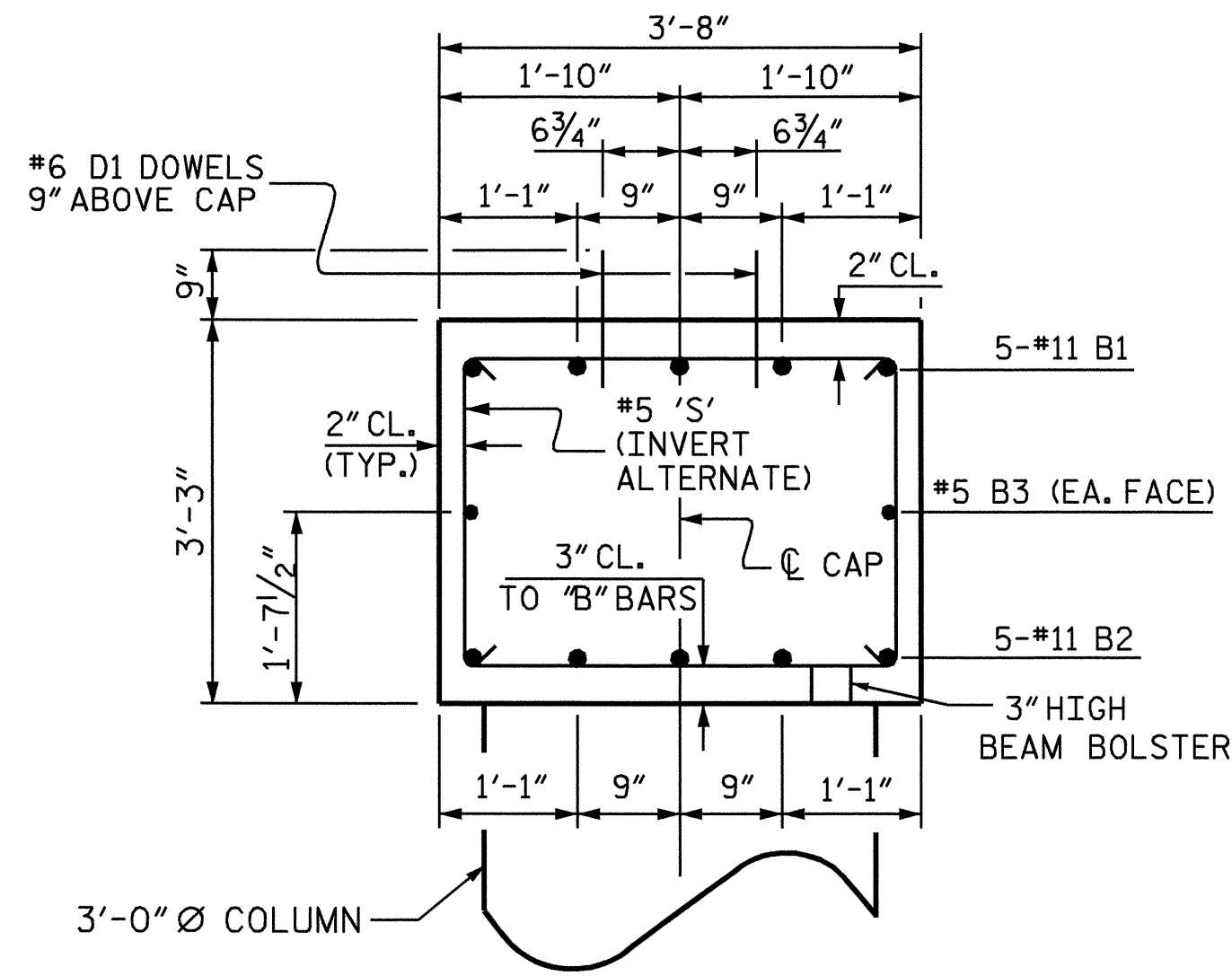
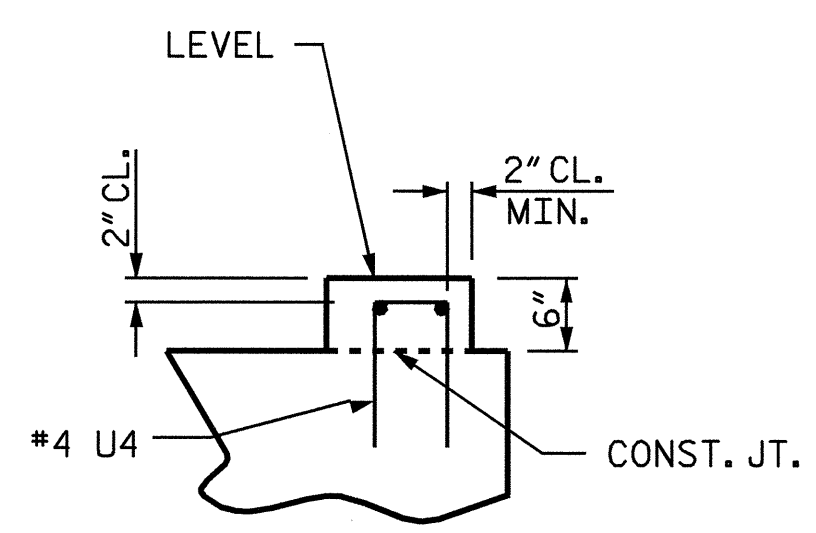
BENT 1					
BAR NO.	SIZE	TYPE	LENGTH	WEIGHT	
B1	5	11	41'-5"	1100	
B2	5	11 STR	38'-3"	1016	
B3	2	5 STR	38'-3"	80	
B4	4	4 STR	3'-4"	9	
D1	48	6 STR	1'-6"	108	
M1	14	11 STR	20'-0"	1488	
M2	14	11 STR	18'-0"	1339	
S1	43	5 3	10'-0"	448	
U1	6	4 4	5'-8"	23	
U2	6	4 4	6'-2"	25	
U3	8	4 4	3'-6"	19	
V1	14	11 2	23'-5"	1742	
V2	14	11 2	24'-3"	1804	
REINFORCING STEEL			LBS.	9199	
SP-1	1	*	5 208'-1"	217	
SP-2	1	*	5 168'-8"	176	
SP-3	1	**	5 691'-8"	462	
SP-4	1	**	5 719'-2"	480	
SPIRAL COLUMN REINFORCING STEEL			LBS.	1335	
CLASS 'A' CONCRETE					
POUR #2 (COLUMNS)			CU. YD.	10.8	
POUR #3 (BENT CAP)			CU. YD.	17.0	
POUR #4 (LAT. GUIDES)			CU. YD.	0.1	
TOTAL:			CU. YD.	27.9	
DRILLED PIER QUANTITIES					
DRILLED PIER CONCRETE					
POUR #1 (DRILLED PIERS)			C.Y.	6.4	
3'-6" Ø DRILLED PIERS IN SOIL, LIN. FT.			=	6.0	
3'-6" Ø DRILLED PIERS NOT IN SOIL, LIN. FT.			=	12.0	

ALL BAR DIMENSIONS ARE OUT TO OUT.  
\* THE SP-1 & SP-2 SPIRAL REINFORCING STEEL SHALL BE W31 OR D-31 COLD DRAWN WIRE OR #5 PLAIN OR DEFORMED BAR.  
\* THE SP-3 & SP-4 SPIRAL REINFORCING STEEL SHALL BE W20 OR D-20 COLD DRAWN WIRE OR #4 PLAIN OR DEFORMED BAR.

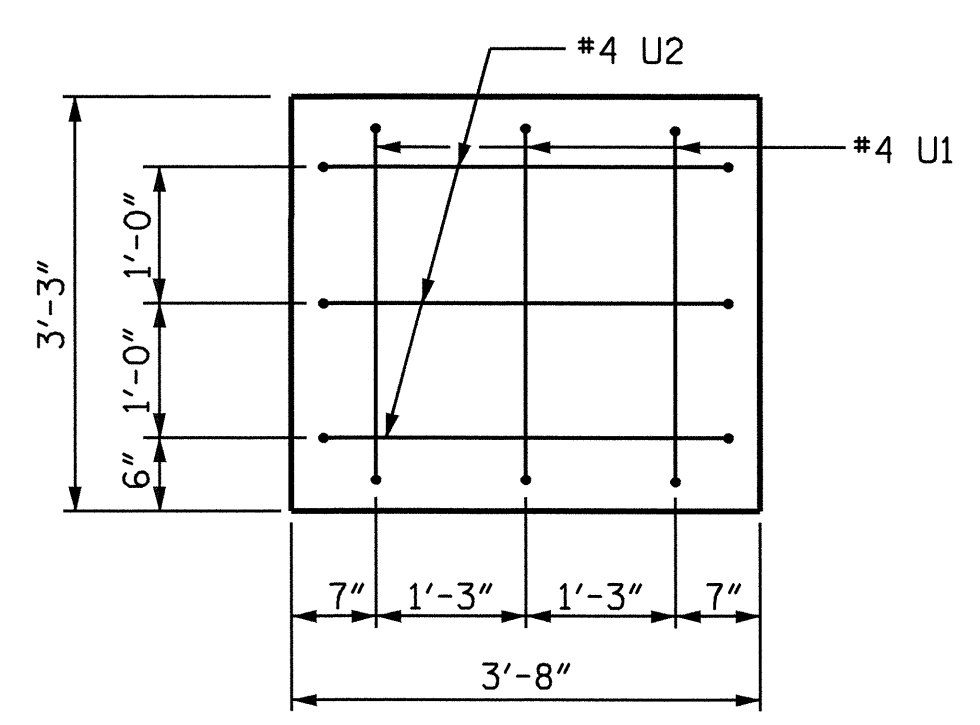


**LATERAL GUIDE REINFORCING DETAIL**

RIGHT END OF THE CAP SHOWN, LEFT END SIMILAR BY ROTATION



**SECTION A-A**



**END VIEW**

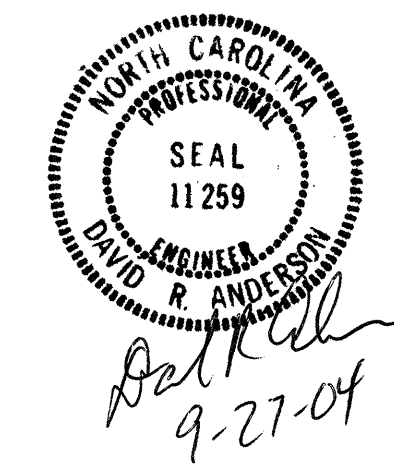
PROJECT NO. B-3704  
WAKE COUNTY  
STATION: 17+05.00 -L-

SHEET 2 OF 2

STATE OF NORTH CAROLINA  
DEPARTMENT OF TRANSPORTATION  
RALEIGH

SUBSTRUCTURE  
BENT 1

REVISIONS						SHEET NO.
NO.	BY:	DATE:	NO.	BY:	DATE:	
1			3			SHEET NO. 5-16
2			4			TOTAL SHEETS 23



DRAWN BY : W.K. FISCHER DATE : 3/5/04  
CHECKED BY : N.Q. TRAN DATE : 3/29/04