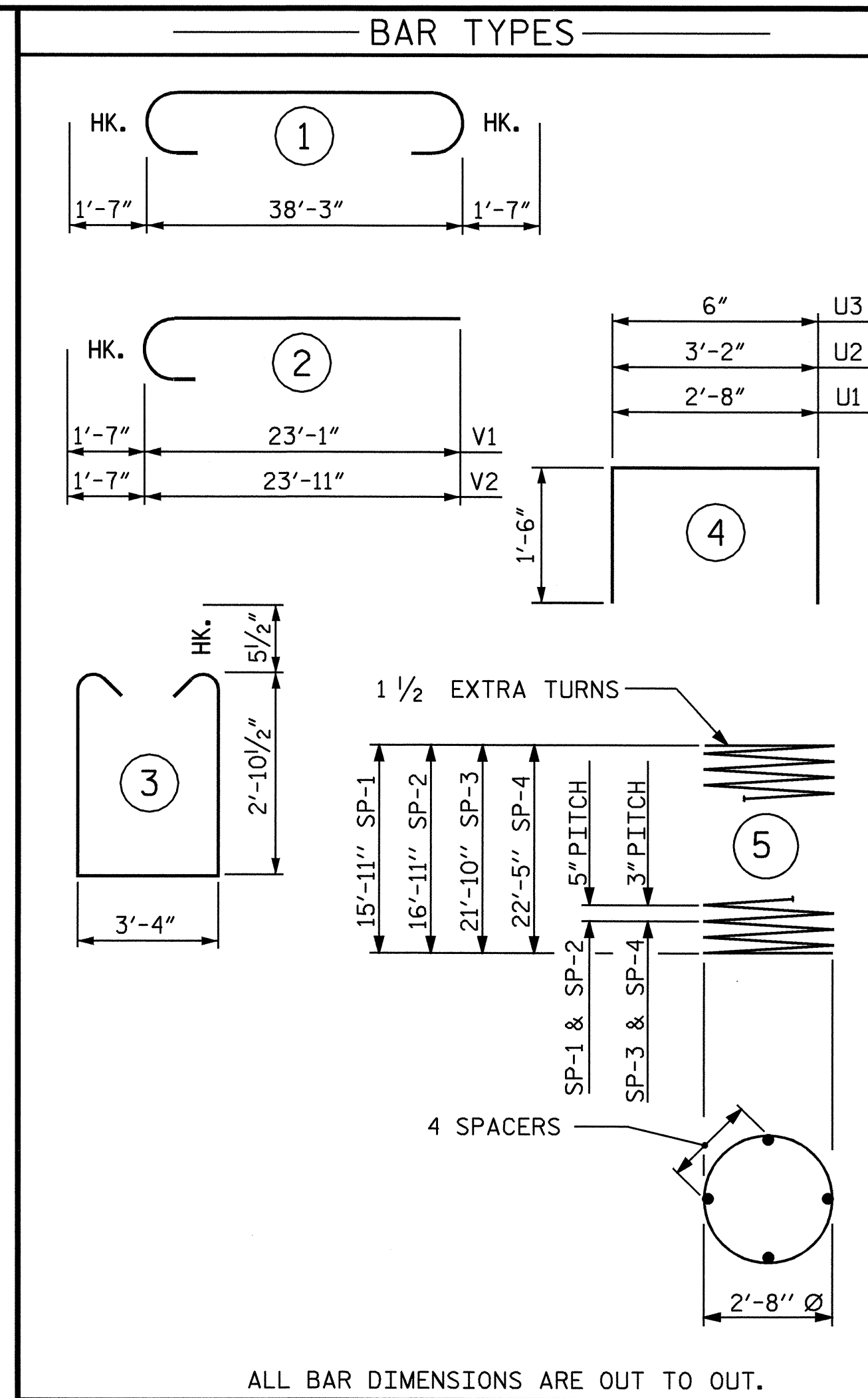


**PLAN OF COLUMNS AND DRILLED PIERS**

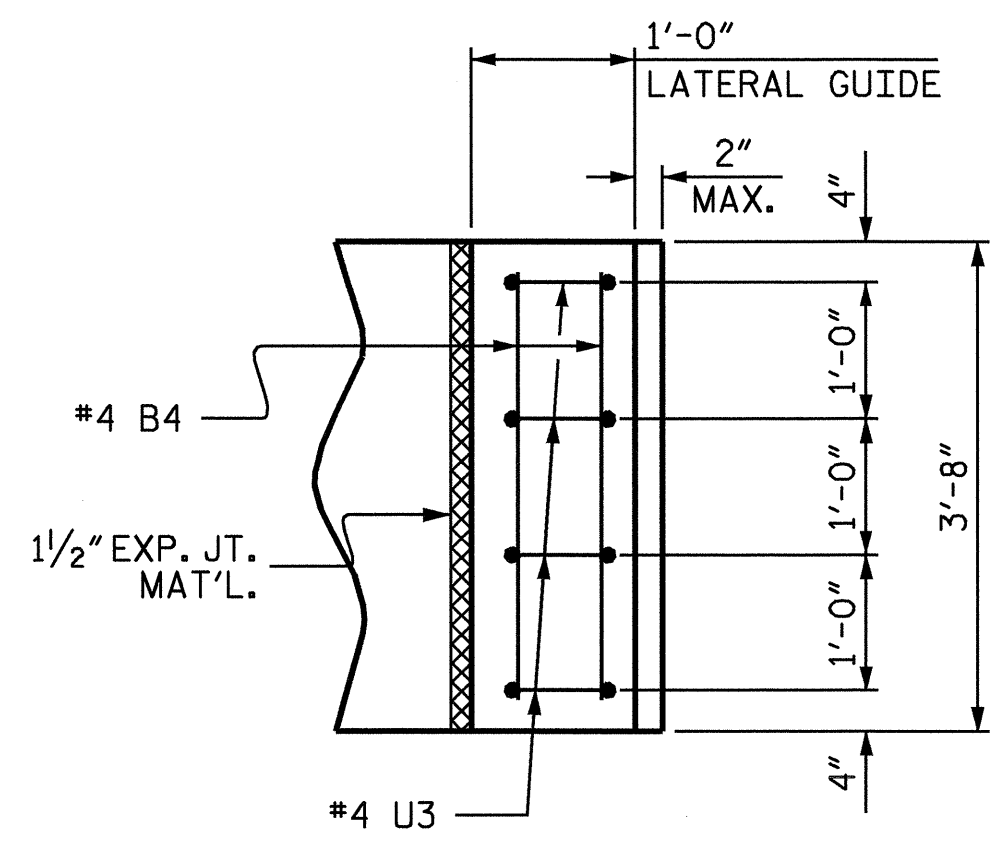
(ALL DIMENSIONS AND REINFORCING STEEL ARE TYPICAL FOR ALL COLUMNS AND DRILLED PIERS)



BILL OF MATERIAL					
BENT 2					
BAR NO.	SIZE	TYPE	LENGTH	WEIGHT	
B1	5	11	41'-5"	1100	
B2	5	11 STR	38'-3"	1016	
B3	2	5 STR	38'-3"	80	
B4	4	4 STR	3'-4"	9	
D1	48	6 STR	1'-6"	108	
M1	14	11 STR	26'-0"	1934	
M2	14	11 STR	27'-0"	2008	
S1	43	5 3	10'-0"	448	
U1	6	4 4	5'-8"	23	
U2	6	4 4	6'-2"	25	
U3	8	4 4	3'-6"	19	
V1	14	11 2	24'-8"	1835	
V2	14	11 2	25'-6"	1897	
REINFORCING STEEL			LBS.	10501	
SP-1	1	*	5	326'-6"	341
SP-2	1	*	5	346'-3"	361
SP-3	1	**	5	732'-11"	490
SP-4	1	**	5	760'-5"	508
SPIRAL COLUMN REINFORCING STEEL			LBS.	1700	
CLASS 'A' CONCRETE					
POUR #2 (COLUMNS)			CU. YD.	11.5	
POUR #3 (BENT CAP)			CU. YD.	17.0	
POUR #4 (LAT GUIDES)			CU. YD.	0.1	
TOTAL:			CU. YD.	28.6	
DRILLED PIER QUANTITIES					
DRILLED PIER CONCRETE					
POUR #1 (DRILLED PIERS)			C.Y.	11.8	
3'-6" Ø DRILLED PIERS IN SOIL, LIN. FT.			=	19.0	
3'-6" Ø DRILLED PIERS NOT IN SOIL, LIN. FT.			=	14.0	
PERMANENT STEEL CASING FOR 3'-6" Ø DRILLED PIER, LIN. FT.			=	20.0	

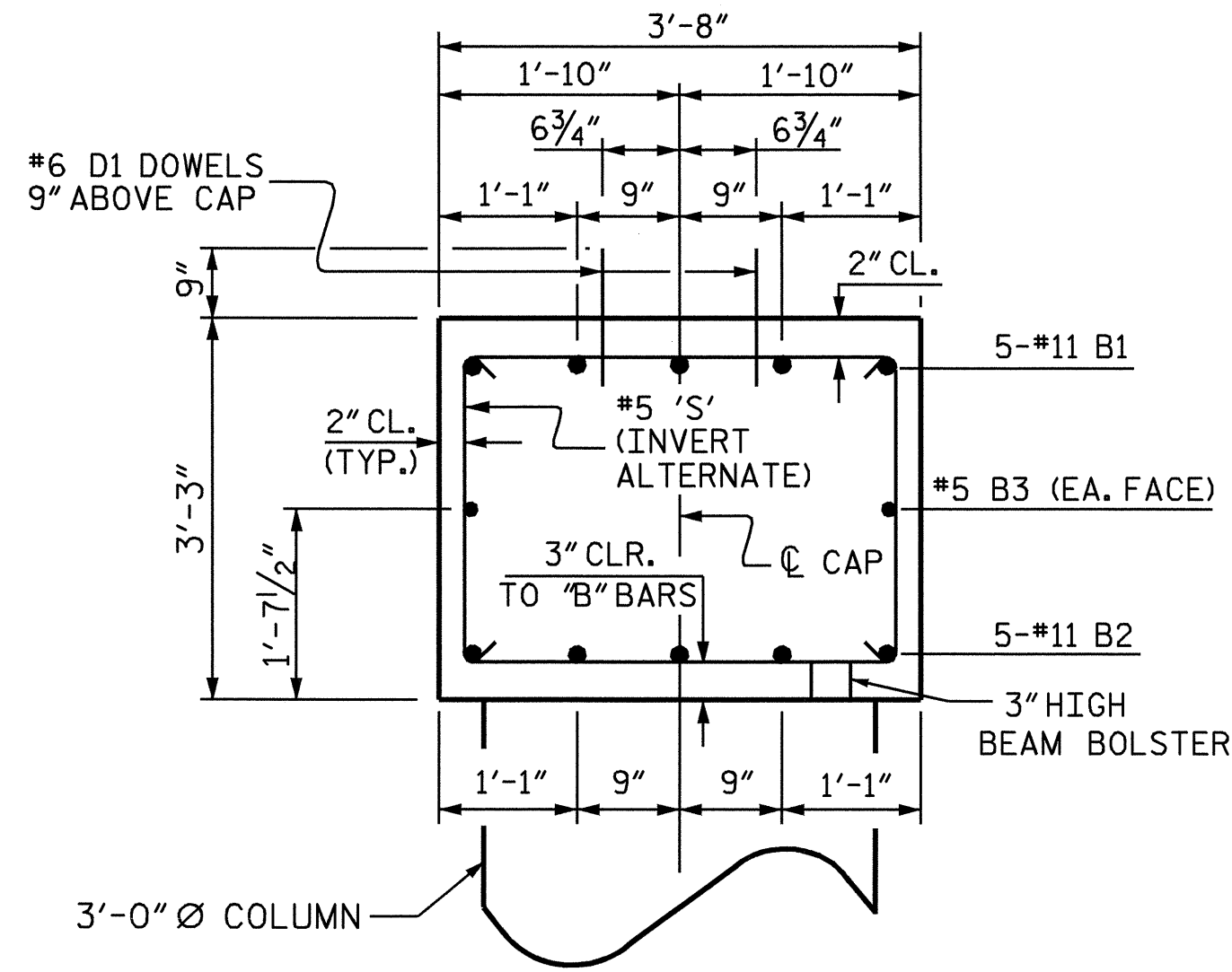
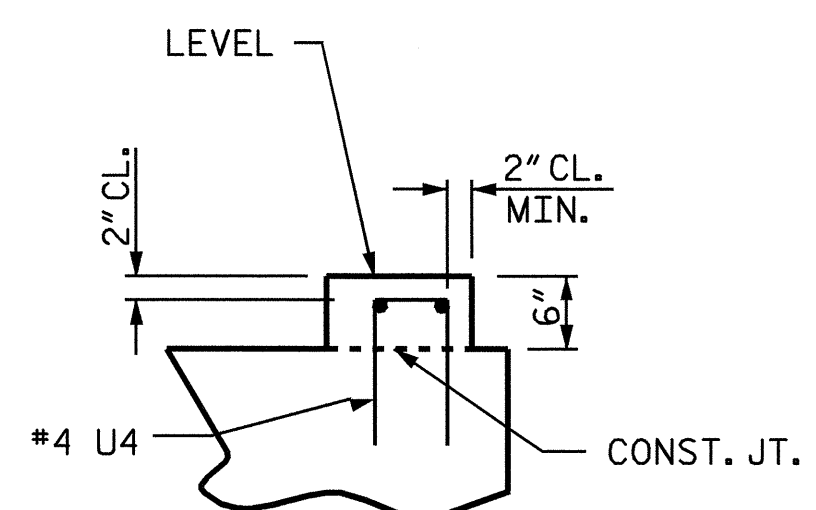
ALL BAR DIMENSIONS ARE OUT TO OUT.

\* THE SP-1 & SP-2 SPIRAL REINFORCING STEEL SHALL BE W31 OR D-31 COLD DRAWN WIRE OR #5 PLAIN OR DEFORMED BAR.  
\* THE SP-3 & SP-4 SPIRAL REINFORCING STEEL SHALL BE W20 OR D-20 COLD DRAWN WIRE OR #4 PLAIN OR DEFORMED BAR.

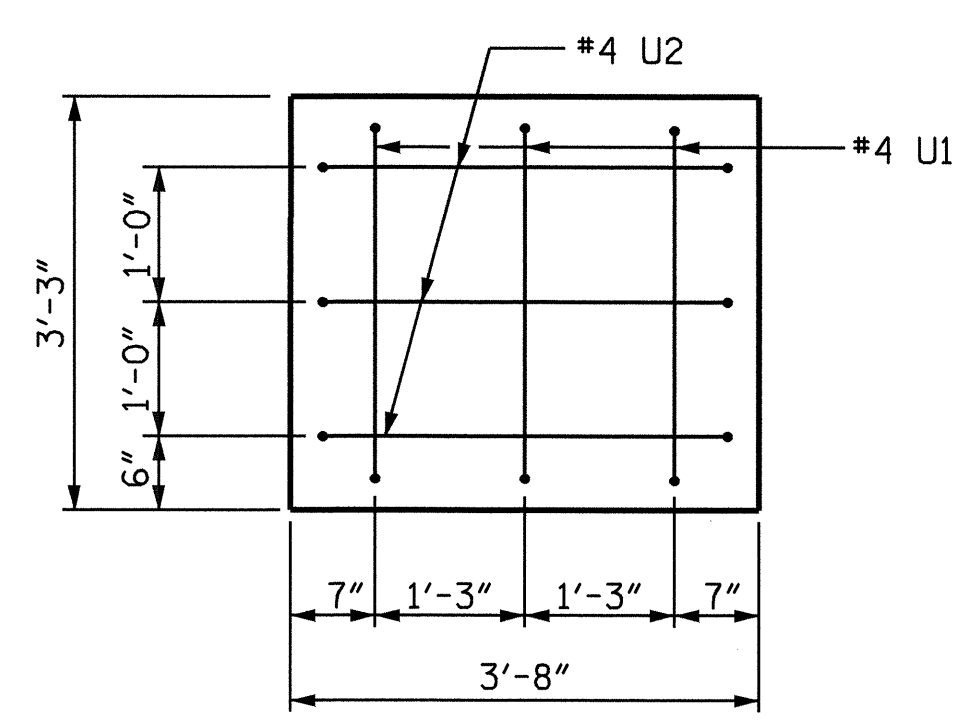


**LATERAL GUIDE REINFORCING DETAIL**

RIGHT END OF THE CAP SHOWN, LEFT END SIMILAR BY ROTATION



**SECTION A-A**

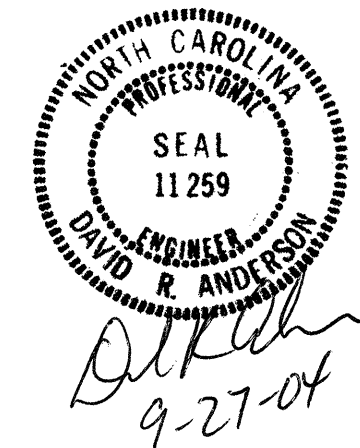


**END VIEW**

PROJECT NO. B-3704  
WAKE COUNTY  
STATION: 17+05.00 -L-

SHEET 2 OF 2

STATE OF NORTH CAROLINA DEPARTMENT OF TRANSPORTATION RALEIGH					
SUBSTRUCTURE BENT 2					
REVISIONS					
NO.	BY:	DATE:	NO.	BY:	DATE:
1			3		
2			4		
SHEET NO.					5-18
TOTAL SHEETS					23



DRAWN BY: W.K. FISCHER DATE: 3/5/04  
CHECKED BY: N.Q. TRAN DATE: 3/29/04