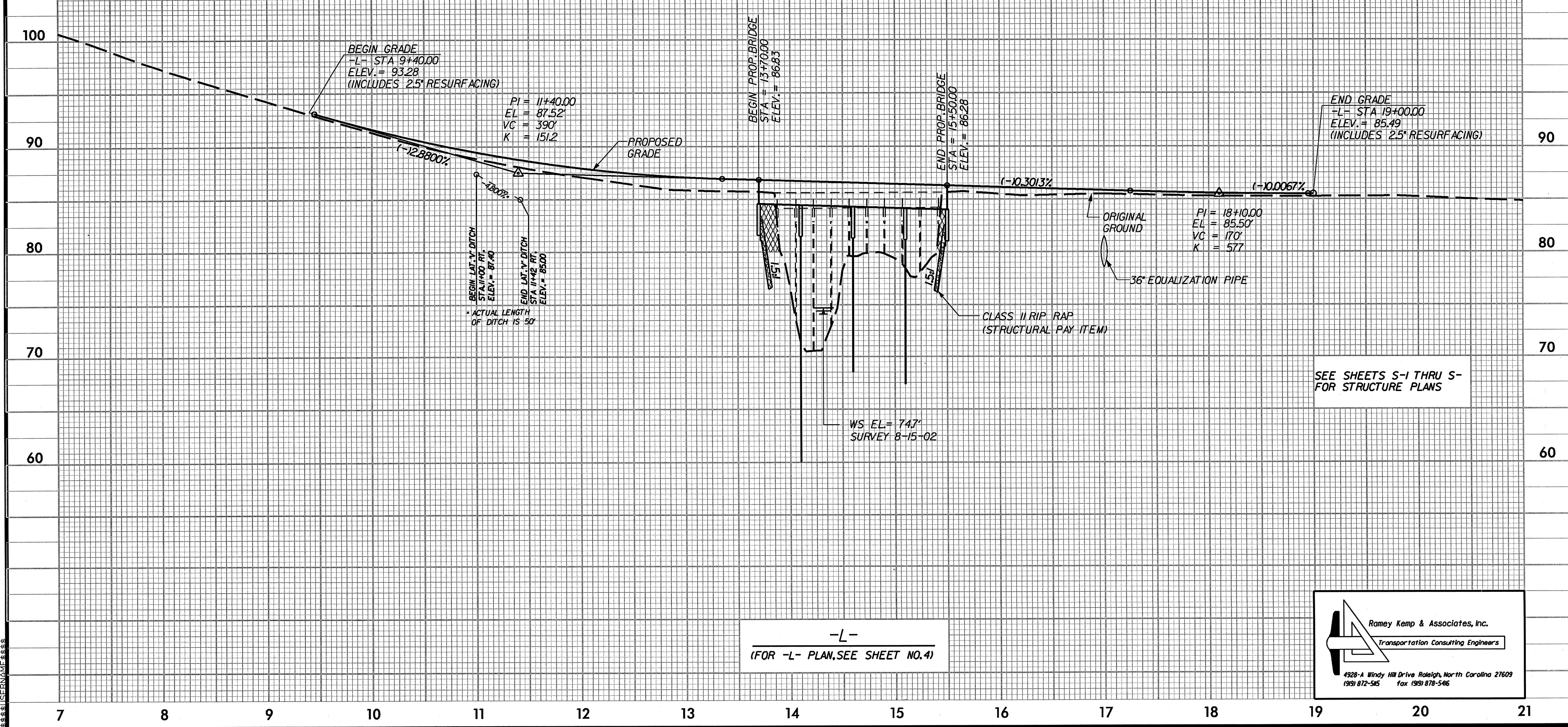


B.M. #11 ELEV. = 81.52  
RR SPIKE IN 15' MAPLE  
112' RT. OF -BL- STA. 13+98

B.M. #12 ELEV. = 96.72  
RR SPIKE IN 20' OAK  
165' LT. OF -BL- STA. 9+46

STRUCTURE HYDRAULIC DATA	
DESIGN DISCHARGE	= 3300 CFS
DESIGN FREQUENCY	= 25 YRS
DESIGN HW ELEVATION	= 83.6 FT
BASE DISCHARGE	= 4900 CFS
BASE FREQUENCY	= 100 YRS
BASE HW ELEVATION	= 84.4 FT
OVERTOPPING DISCHARGE	= 4100 CFS
OVERTOPPING FREQUENCY	= 50 YRS
OVERTOPPING ELEVATION	= 83.4 FT



SEE SHEETS S-1 THRU S-4 FOR STRUCTURE PLANS

-L-  
(FOR -L- PLAN, SEE SHEET NO. 4)

**Ramey Kemp & Associates, Inc.**  
Transportation Consulting Engineers

4928-A Windy Hill Drive Raleigh, North Carolina 27609  
1991 872-545 fax 1991 878-546

1  
 2  
 3  
 4  
 5  
 6  
 7  
 8  
 9  
 10  
 11  
 12  
 13  
 14  
 15  
 16  
 17  
 18  
 19  
 20  
 21  
 22  
 23  
 24  
 25  
 26  
 27  
 28  
 29  
 30  
 31  
 32  
 33  
 34  
 35  
 36  
 37  
 38  
 39  
 40  
 41  
 42  
 43  
 44  
 45  
 46  
 47  
 48  
 49  
 50  
 51  
 52  
 53  
 54  
 55  
 56  
 57  
 58  
 59  
 60  
 61  
 62  
 63  
 64  
 65  
 66  
 67  
 68  
 69  
 70  
 71  
 72  
 73  
 74  
 75  
 76  
 77  
 78  
 79  
 80  
 81  
 82  
 83  
 84  
 85  
 86  
 87  
 88  
 89  
 90  
 91  
 92  
 93  
 94  
 95  
 96  
 97  
 98  
 99  
 100