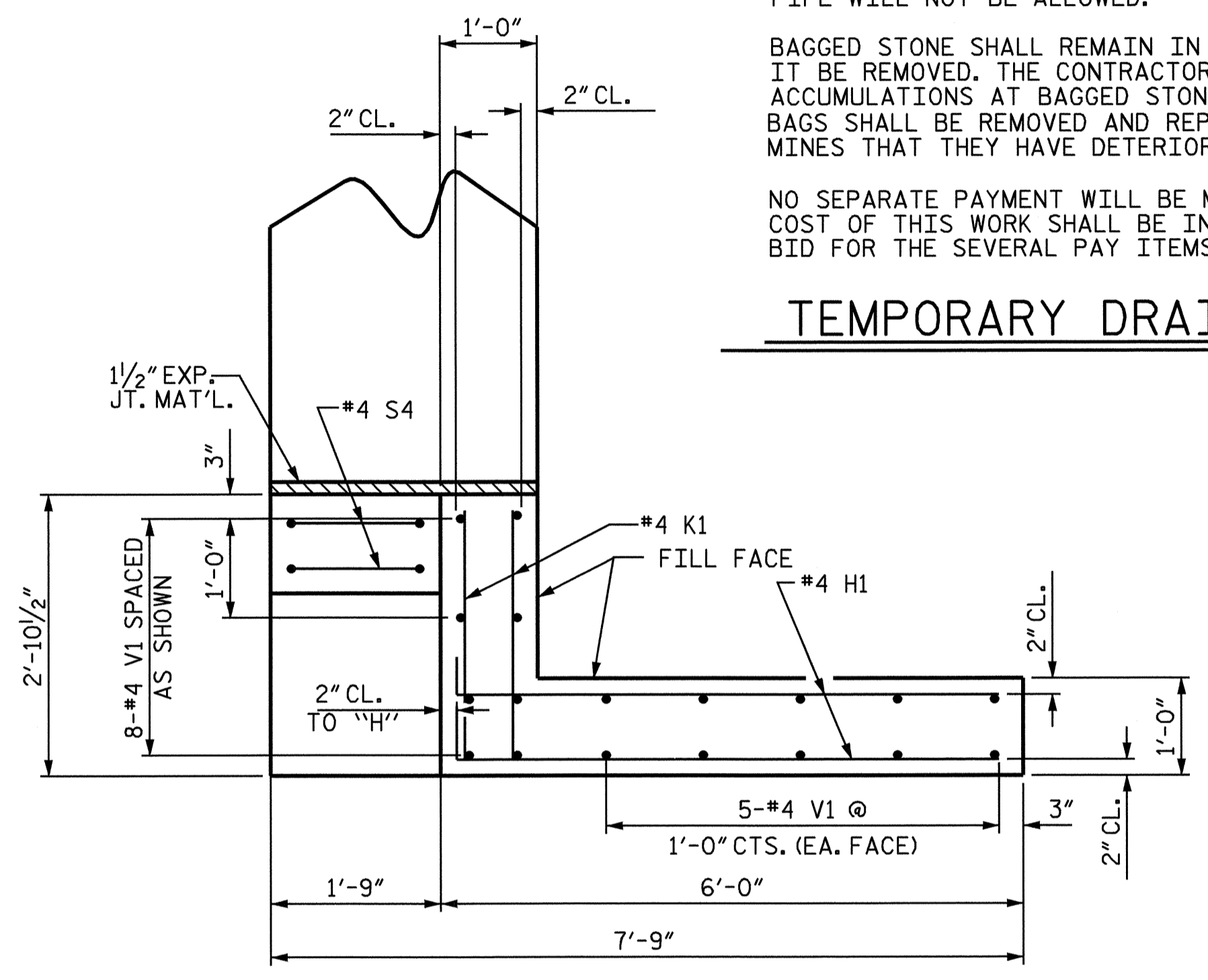


BAGGED STONE AND PIPE SHALL BE PLACED IMMEDIATELY AFTER COMPLETION OF END BENT EXCAVATION. PIPE MAY BE EITHER CONCRETE, CORRUGATED STEEL, CORRUGATED ALUMINUM ALLOY, OR CORRUGATED PLASTIC. PERFORATED PIPE WILL NOT BE ALLOWED.

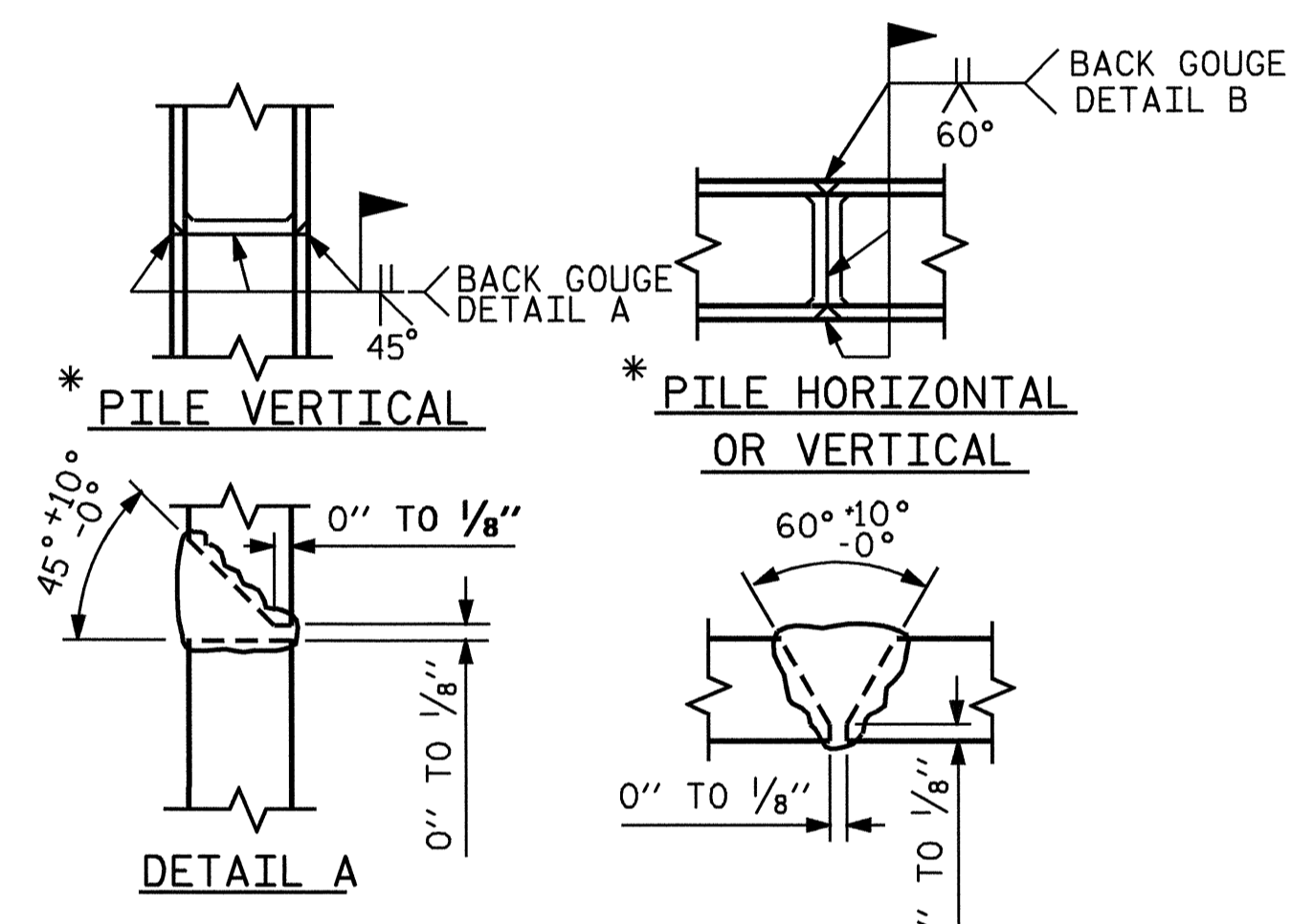
BAGGED STONE SHALL REMAIN IN PLACE UNTIL THE ENGINEER DIRECTS THAT IT BE REMOVED. THE CONTRACTOR SHALL REMOVE AND DISPOSE OF SILT ACCUMULATIONS AT BAGGED STONE WHEN SO DIRECTED BY THE ENGINEER. BAGS SHALL BE REMOVED AND REPLACED WHENEVER THE ENGINEER DETERMINES THAT THEY HAVE DETERIORATED AND LOST THEIR EFFECTIVENESS.

NO SEPARATE PAYMENT WILL BE MADE FOR THIS WORK AND THE ENTIRE COST OF THIS WORK SHALL BE INCLUDED IN THE UNIT CONTRACT PRICE BID FOR THE SEVERAL PAY ITEMS.

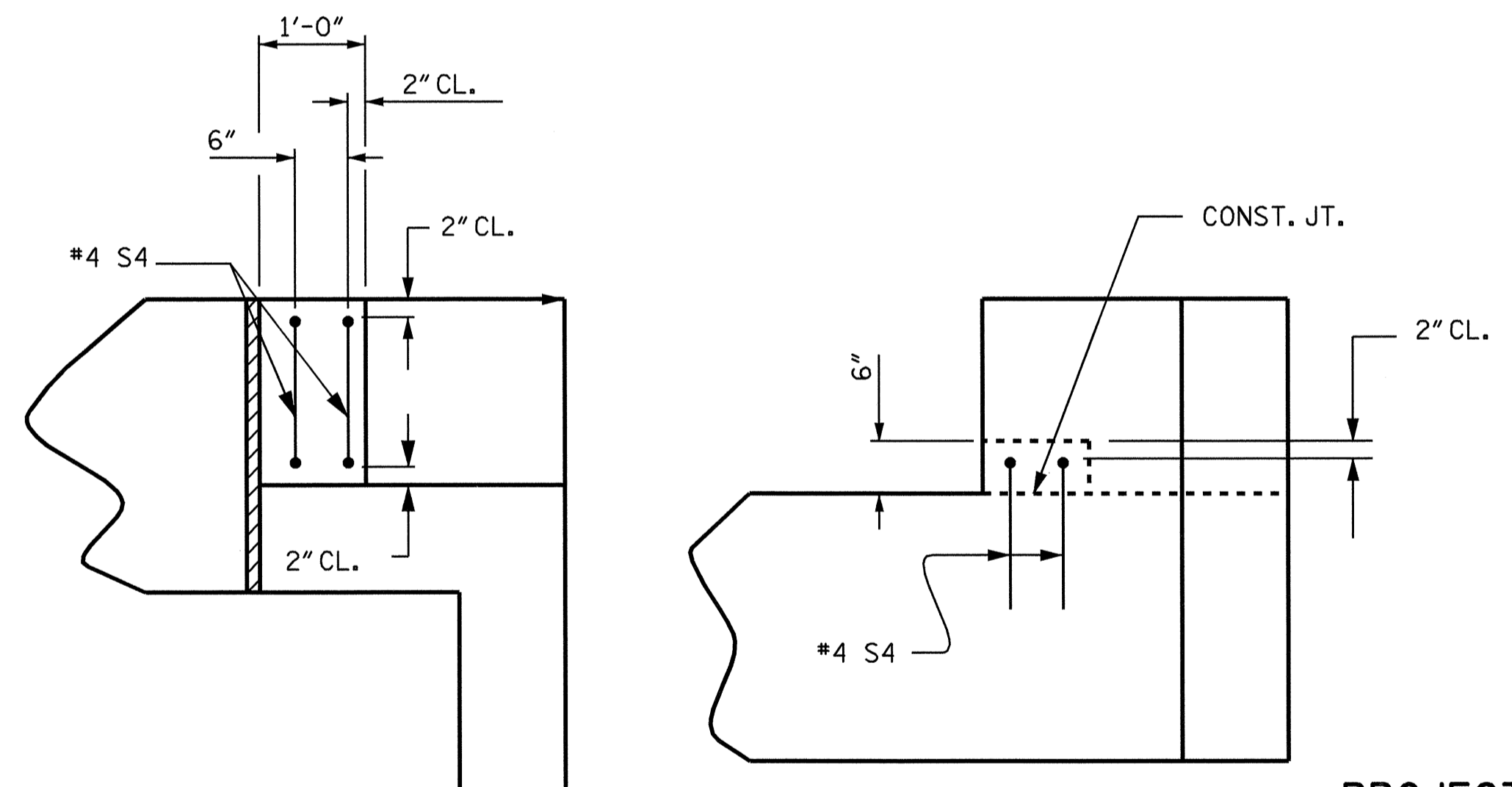
TEMPORARY DRAINAGE AT END BENT



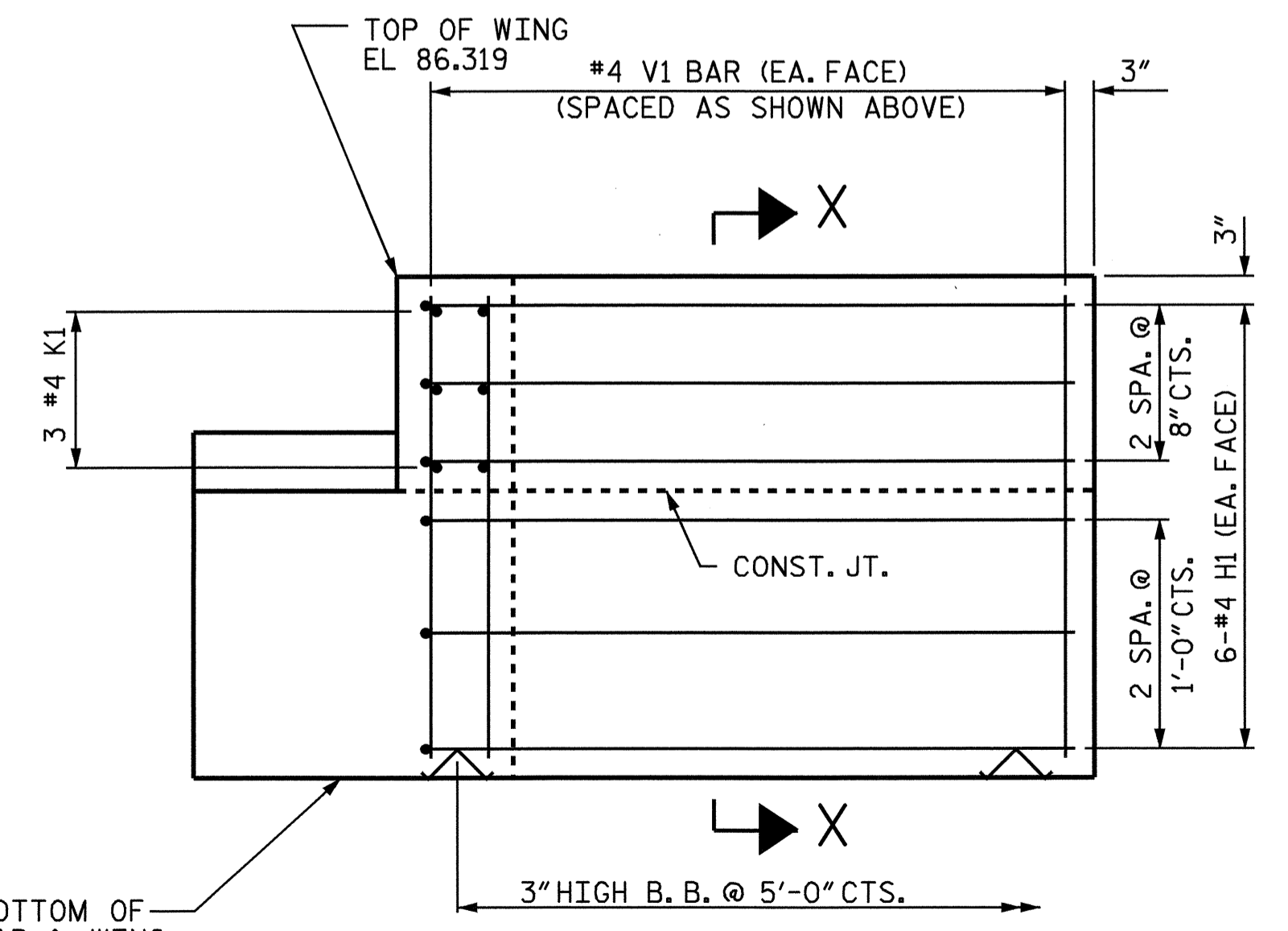
PLAN OF WING
(TYP. BOTH WINGS)



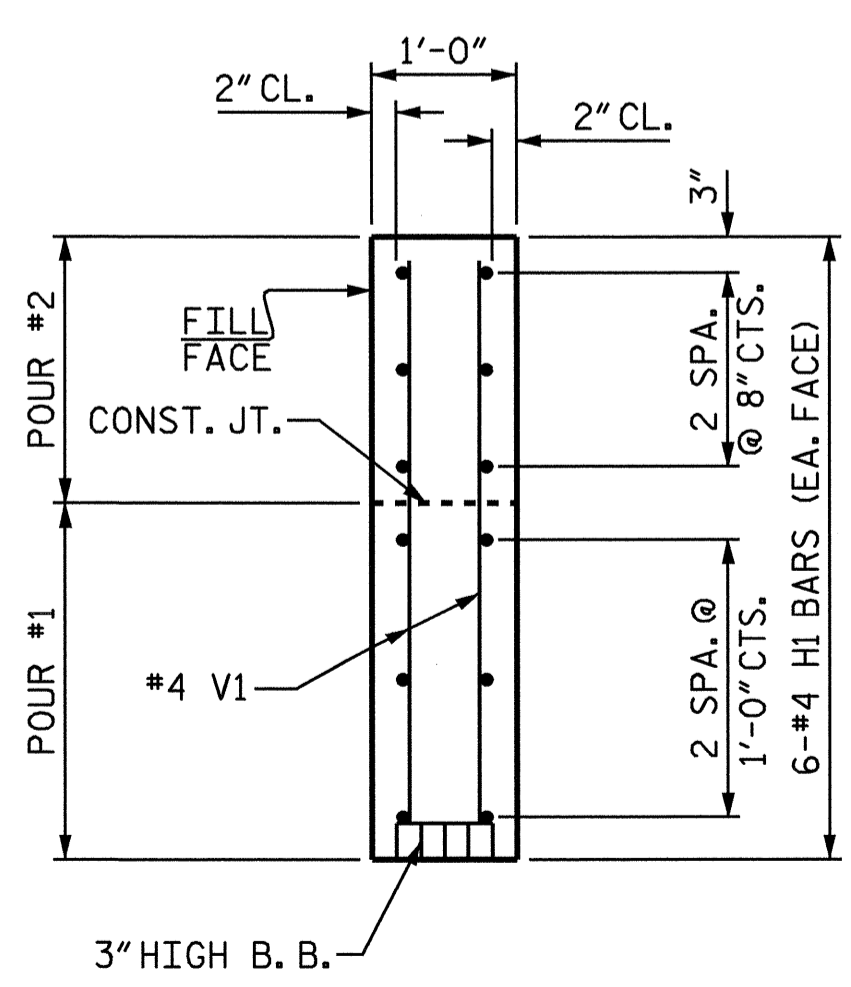
PILE SPLICE DETAILS



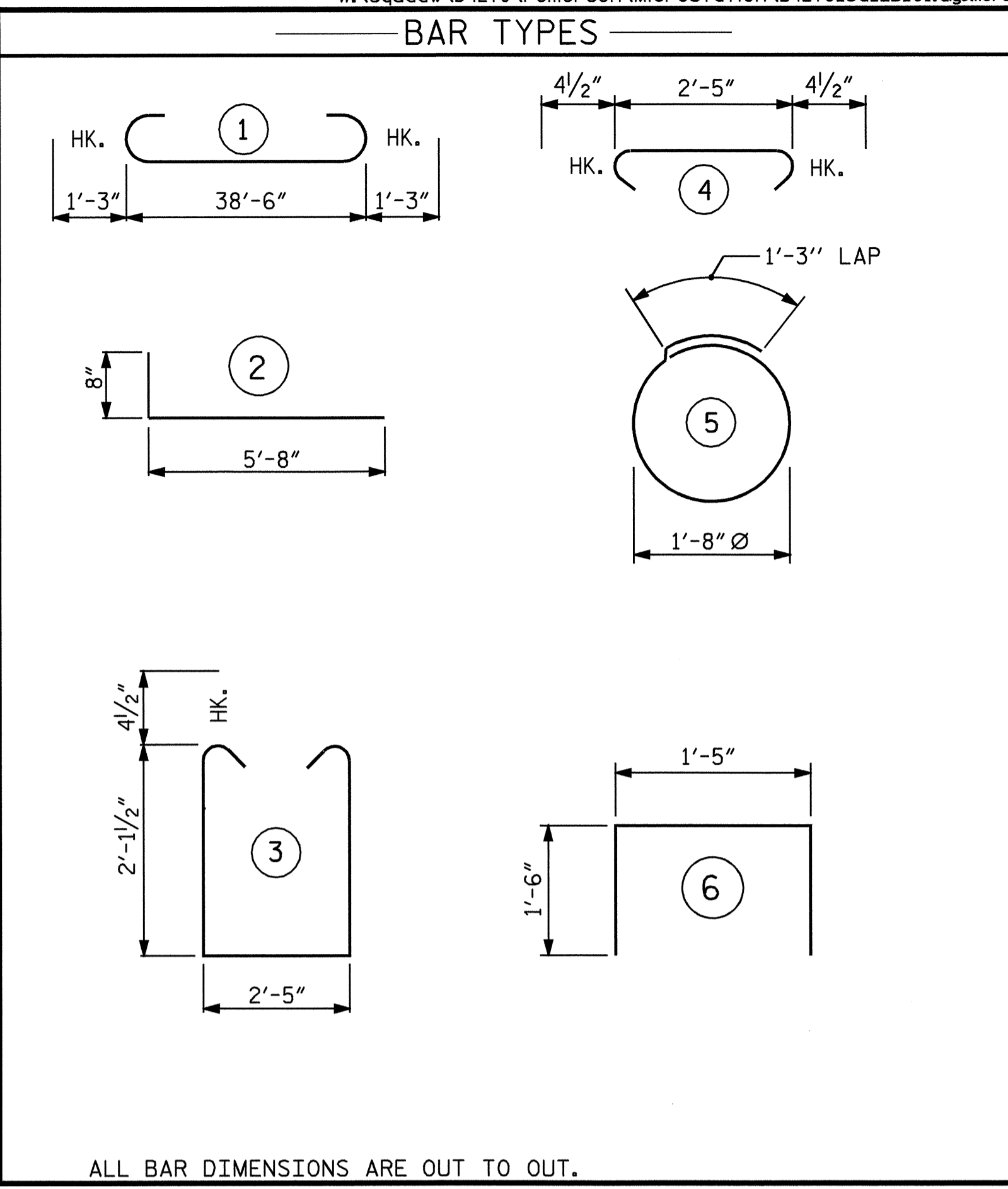
LATERAL GUIDE DETAILS
(RIGHT LATERAL GUIDE SHOWN, LEFT SIMILAR)



ELEVATION
(TYP. BOTH WINGS)



SECTION X-X
(TYP. BOTH WINGS)



ALL BAR DIMENSIONS ARE OUT TO OUT.

| BILL OF MATERIAL | | | | | |
|------------------------------|-----|----------------|------|------------|--------|
| END BENT No. 1 | | | | | |
| BAR | No. | SIZE | TYPE | LENGTH | WEIGHT |
| B1 | 8 | 9 | 1 | 41'-0" | 1115 |
| B2 | 16 | 4 | STR | 20'-7" | 220 |
| B3 | 10 | 4 | STR | 2'-5" | 16 |
| D1 | 22 | 6 | STR | 1'-6" | 50 |
| H1 | 24 | 4 | 2 | 6'-4" | 102 |
| K1 | 12 | 4 | STR | 2'-6" | 20 |
| S1 | 37 | 4 | 3 | 7'-5" | 183 |
| S2 | 37 | 4 | 4 | 3'-2" | 78 |
| S3 | 12 | 4 | 5 | 6'-6" | 52 |
| S4 | 4 | 4 | 6 | 4'-5" | 12 |
| V1 | 36 | 4 | STR | 3'-11" | 94 |
| REINFORCING STEEL | | | | LBS. | 1942 |
| CLASS A CONCRETE BREAKDOWN : | | | | | |
| POUR #1 (CAP & LOWER WINGS) | | | | 10.9 C. Y. | |
| POUR #2 (UPPER WINGS) | | | | 1.1 C. Y. | |
| POUR #3 (LATERAL GUIDES) | | | | 0.1 C. Y. | |
| TOTAL | | | | 12.1 C. Y. | |
| HP 12 X 53 STEEL PILES | | | | | |
| NO. = 6 | | LIN. FT. = 180 | | | |

PROJECT NO. B-4270
SAMPSON COUNTY
 STATION: 14+60.00 -L-

SHEET 2 OF 2

| STATE OF NORTH CAROLINA DEPARTMENT OF TRANSPORTATION RALEIGH | | | | | |
|--|-----|-------|-----|-----|-----------------|
| SUBSTRUCTURE | | | | | |
| END BENT No. 1 | | | | | |
| REVISIONS | | | | | SHEET NO. |
| NO. | BY: | DATE: | NO. | BY: | DATE: |
| 1 | | | 3 | | |
| 2 | | | 4 | | |
| | | | | | S-11 |
| | | | | | TOTAL SHEETS 23 |



DRAWN BY : R. G. EMERSON DATE : 03/04
 CHECKED BY : P. C. BREWER DATE : 04/04