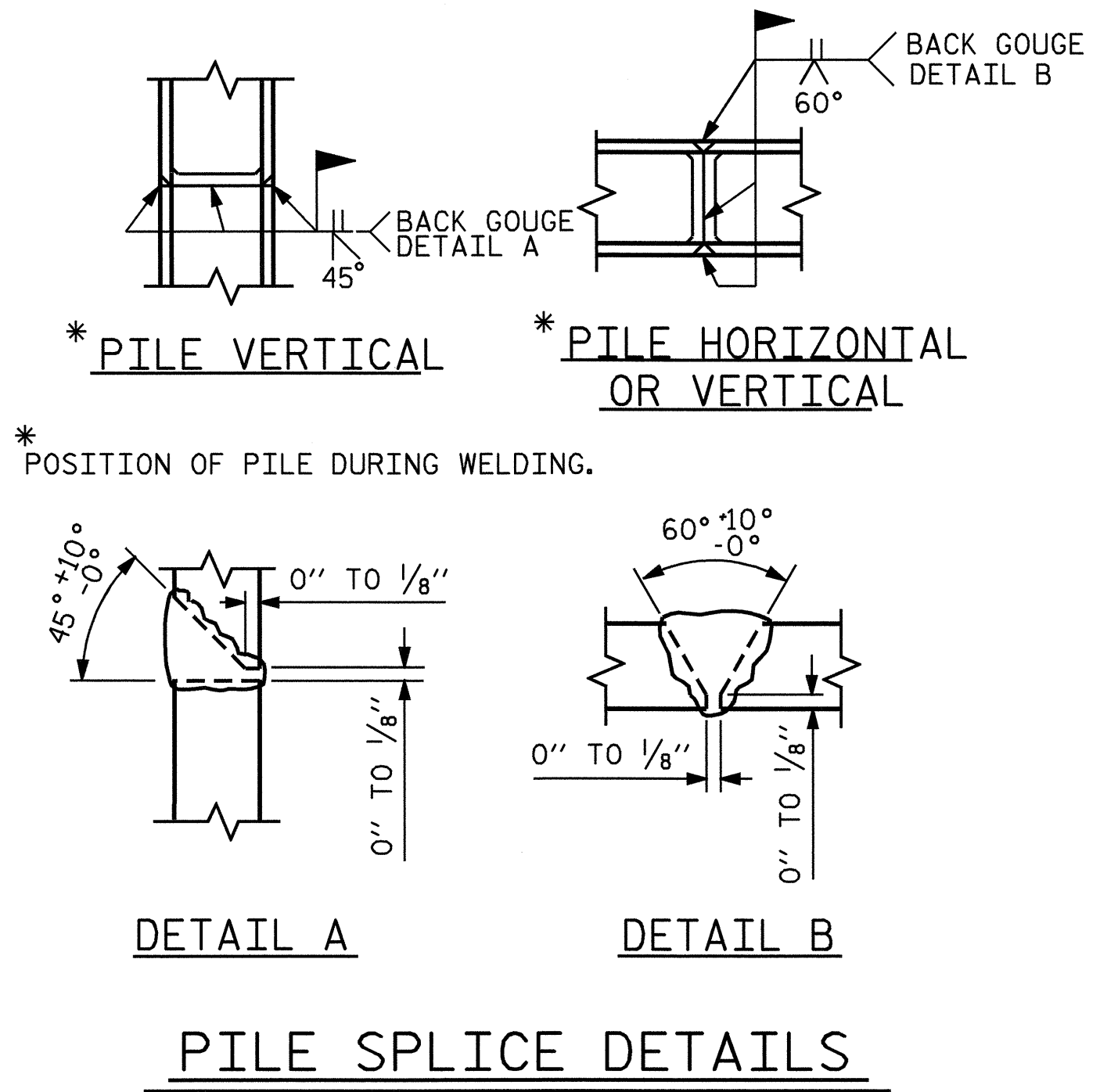
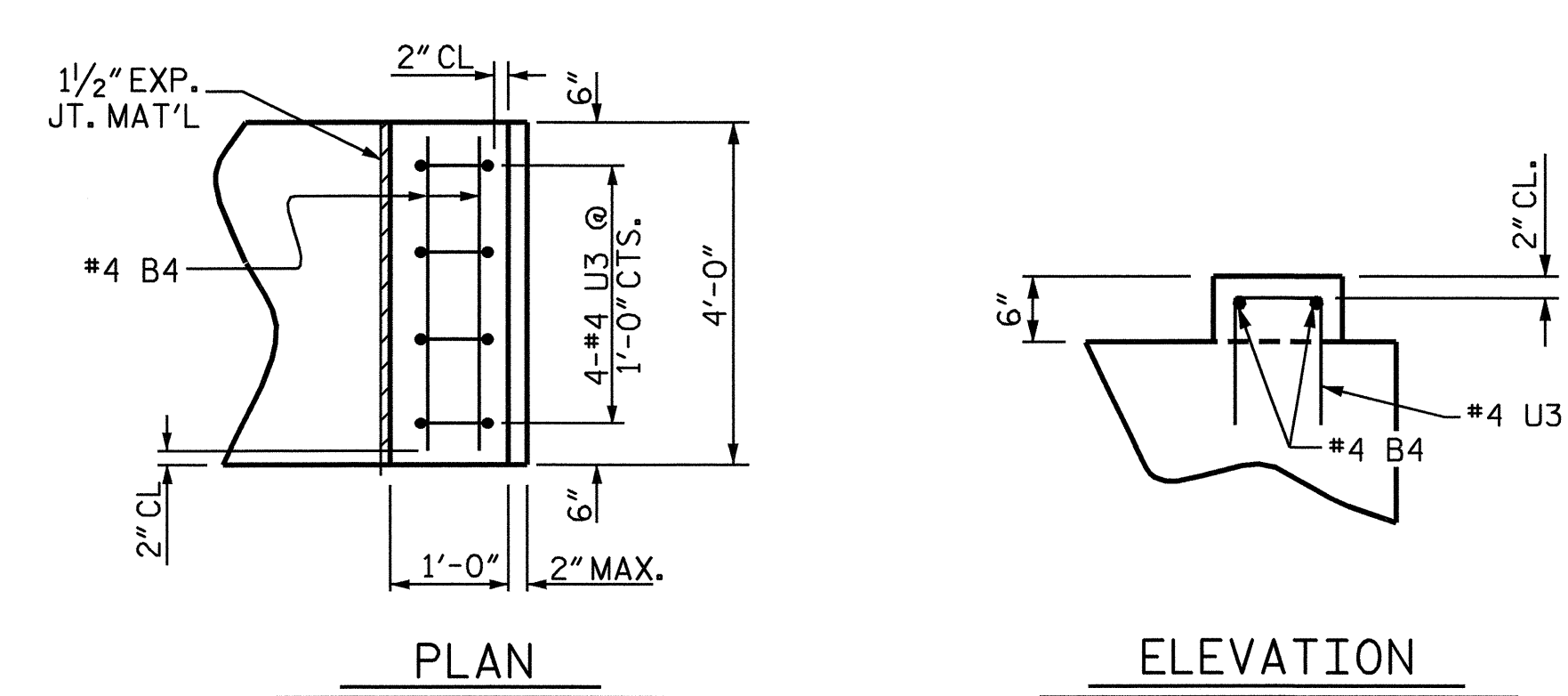
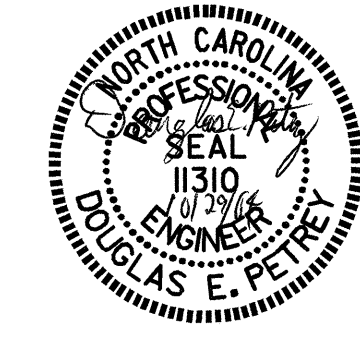


BILL OF MATERIAL					
BENT No. 1					
BAR	NO	SIZE	TYPE	LENGTH	WEIGHT
B1	5	9	1	37' - 7"	639
B2	4	5	STR	35' - 3"	147
B3	16	4	STR	18' - 10"	201
B4	13	4	STR	3' - 8"	32
B5	5	9	STR	35' - 3"	599
D1	44	6	STR	1' - 6"	99
S1	41	5	2	9' - 10"	421
S2	24	4	3	6' - 8"	107
U1	4	4	3	6' - 6"	17
U2	6	4	3	5' - 6"	22
U3	8	4	3	3' - 6"	19
U4	2	9	3	10' - 10"	74
REINFORCING STEEL					LBS. 2377
CLASS A CONCRETE BREAKDOWN:					
POUR #1 (CAP)					15.8 C.Y.
POUR #2 (LATERAL GUIDES)					0.1 C.Y.
TOTAL					15.9 C.Y.
HP 12 X 53 STEEL BRACE PILES					
No. 8					LIN. FT. 240.0
GALVANIZING STEEL PILES					LUMP SUM



PROJECT NO. B-4270
SAMPSON COUNTY
 STATION: 14+60.00 -L-
 SHEET 2 OF 2

STATE OF NORTH CAROLINA
 DEPARTMENT OF TRANSPORTATION
 RALEIGH
 SUBSTRUCTURE
 BENT No. 1



DRAWN BY: A. V. ROYAL DATE: 4/04
 CHECKED BY: P. C. BREWER DATE: 4/04

REVISIONS						SHEET NO.	
NO.	BY:	DATE:	NO.	BY:	DATE:	S-13	
1			3			TOTAL SHEETS 23	
2			4				