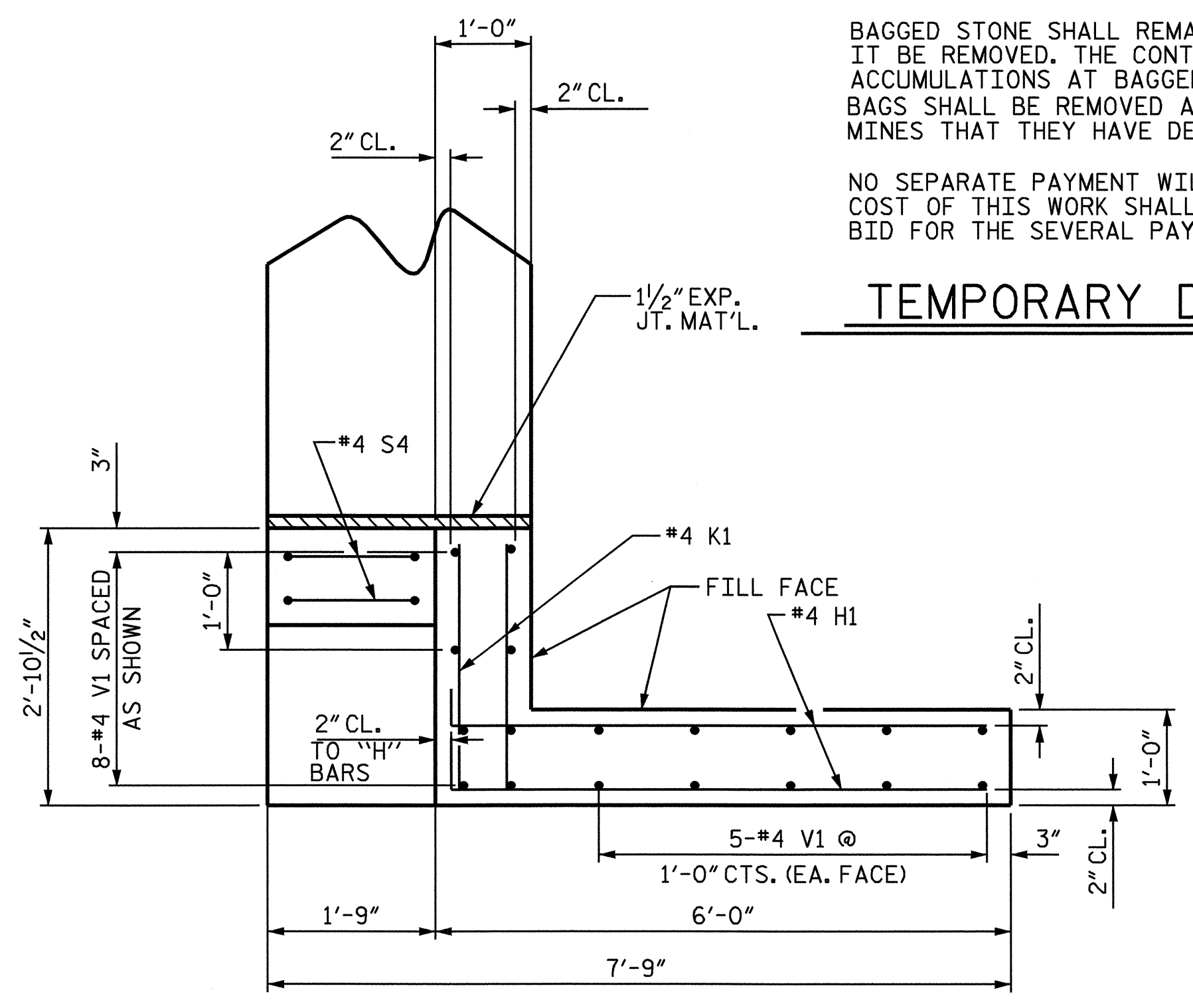


BAGGED STONE AND PIPE SHALL BE PLACED IMMEDIATELY AFTER COMPLETION OF END BENT EXCAVATION. PIPE MAY BE EITHER CONCRETE, CORRUGATED STEEL, CORRUGATED ALUMINUM ALLOY, OR CORRUGATED PLASTIC. PERFORATED PIPE WILL NOT BE ALLOWED.

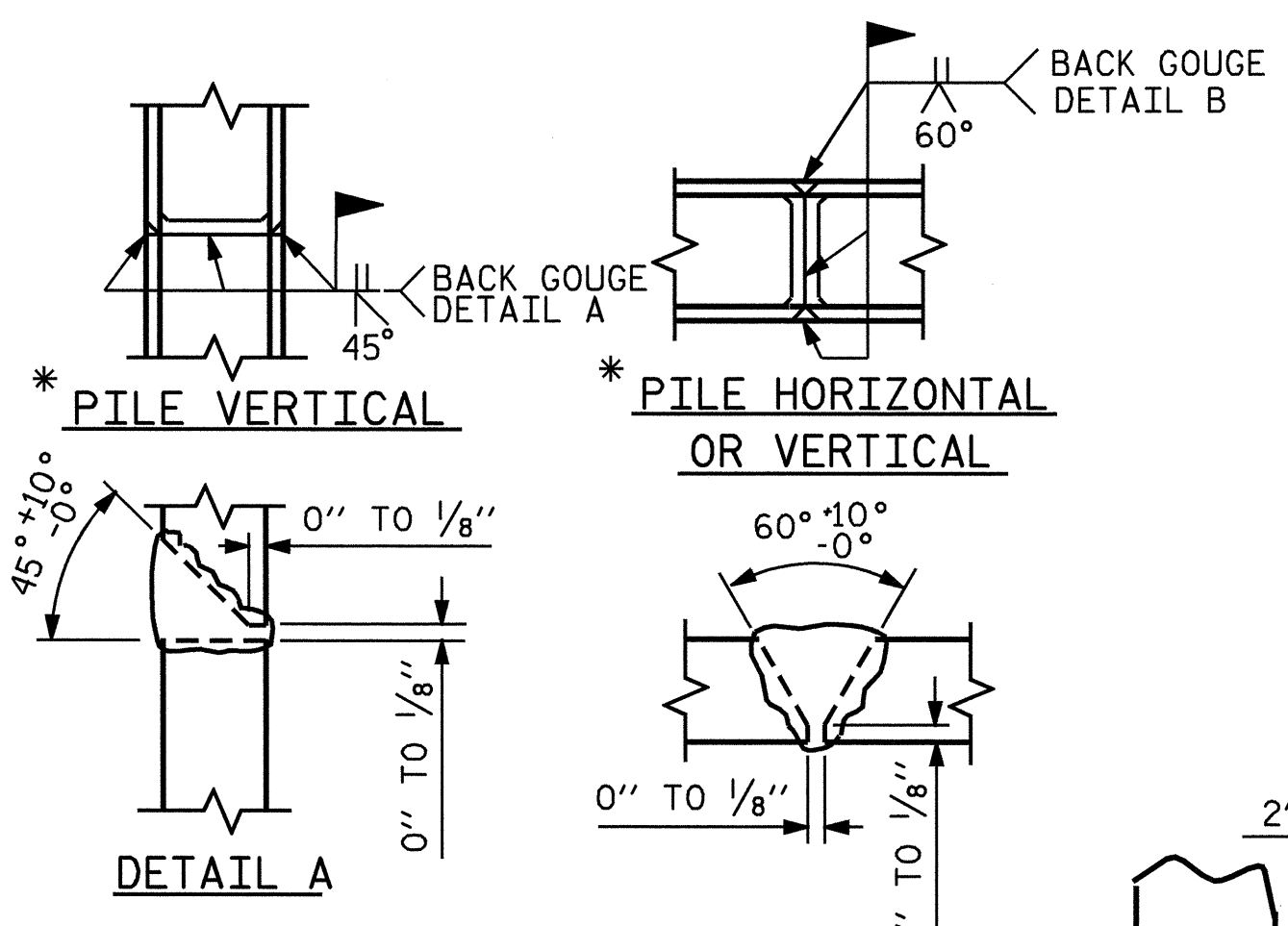
BAGGED STONE SHALL REMAIN IN PLACE UNTIL THE ENGINEER DIRECTS THAT IT BE REMOVED. THE CONTRACTOR SHALL REMOVE AND DISPOSE OF SILT ACCUMULATIONS AT BAGGED STONE WHEN SO DIRECTED BY THE ENGINEER. BAGS SHALL BE REMOVED AND REPLACED WHENEVER THE ENGINEER DETERMINES THAT THEY HAVE DETERIORATED AND LOST THEIR EFFECTIVENESS.

NO SEPARATE PAYMENT WILL BE MADE FOR THIS WORK AND THE ENTIRE COST OF THIS WORK SHALL BE INCLUDED IN THE UNIT CONTRACT PRICE BID FOR THE SEVERAL PAY ITEMS.

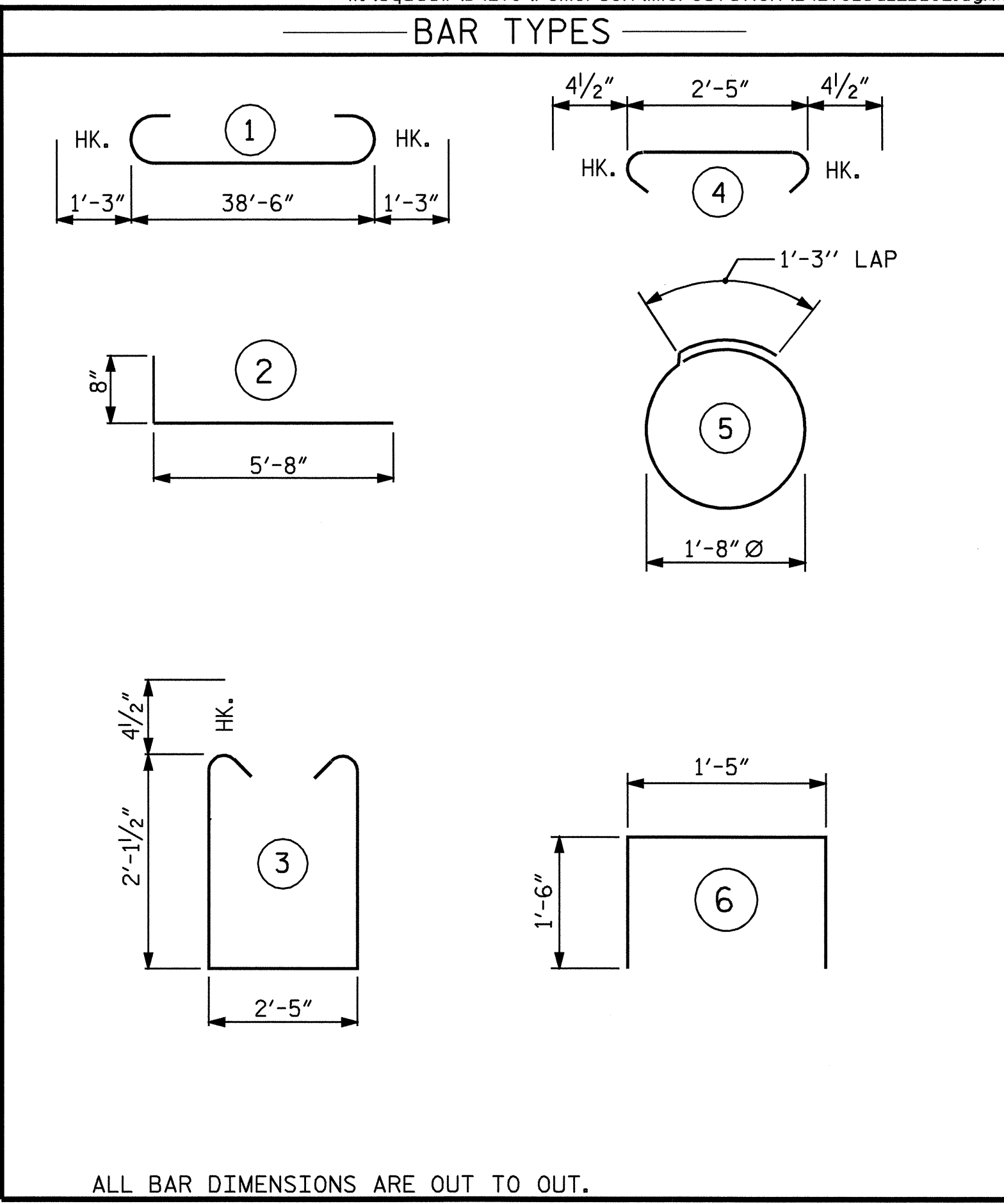
TEMPORARY DRAINAGE AT END BENT



PLAN OF WING
(TYP. BOTH WINGS)

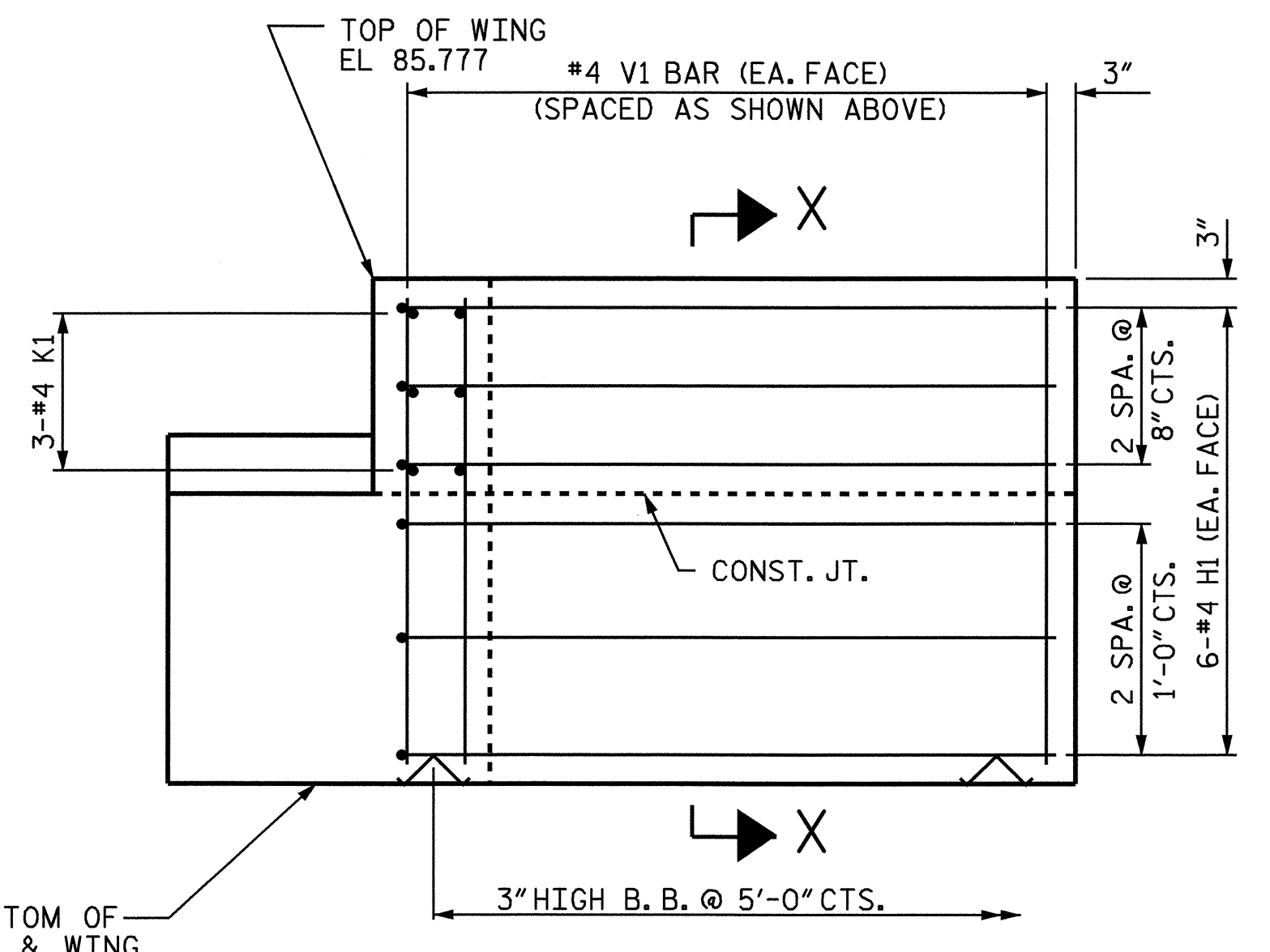


PILE SPLICE DETAILS
* POSITION OF PILE DURING WELDING. **DETAIL B**

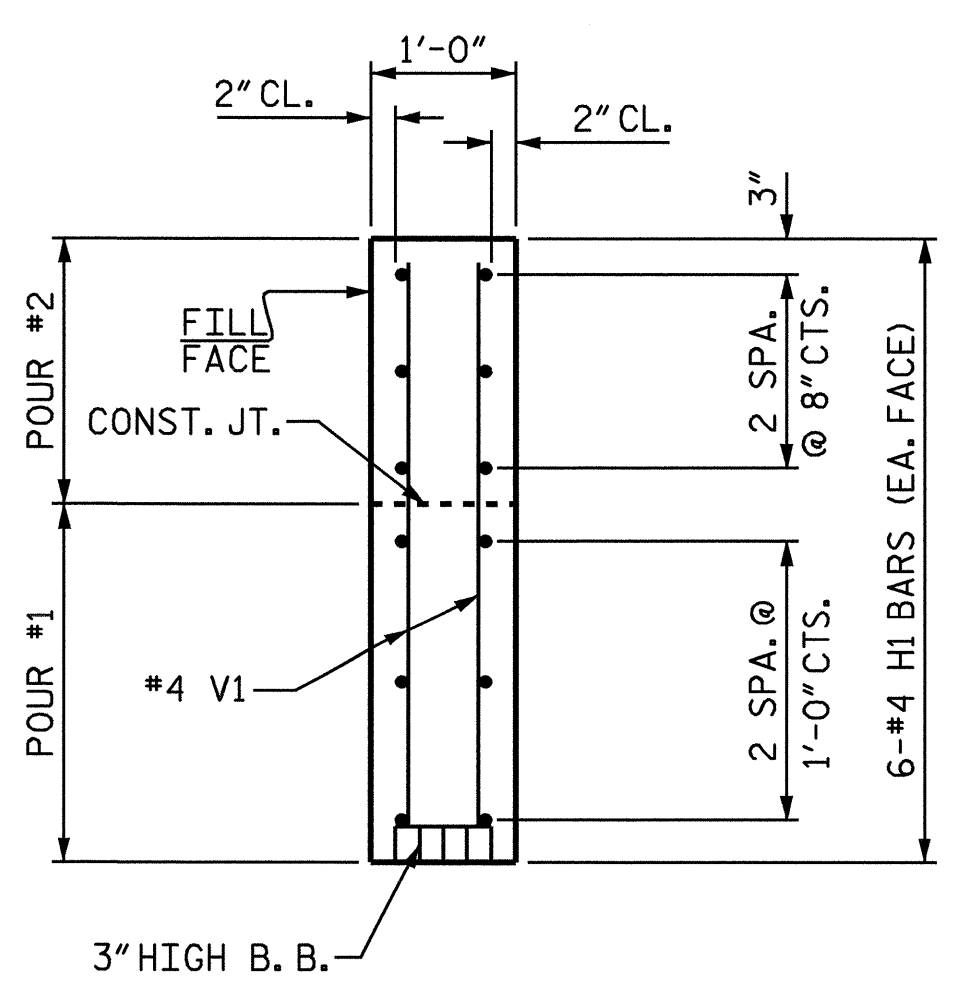


ALL BAR DIMENSIONS ARE OUT TO OUT.

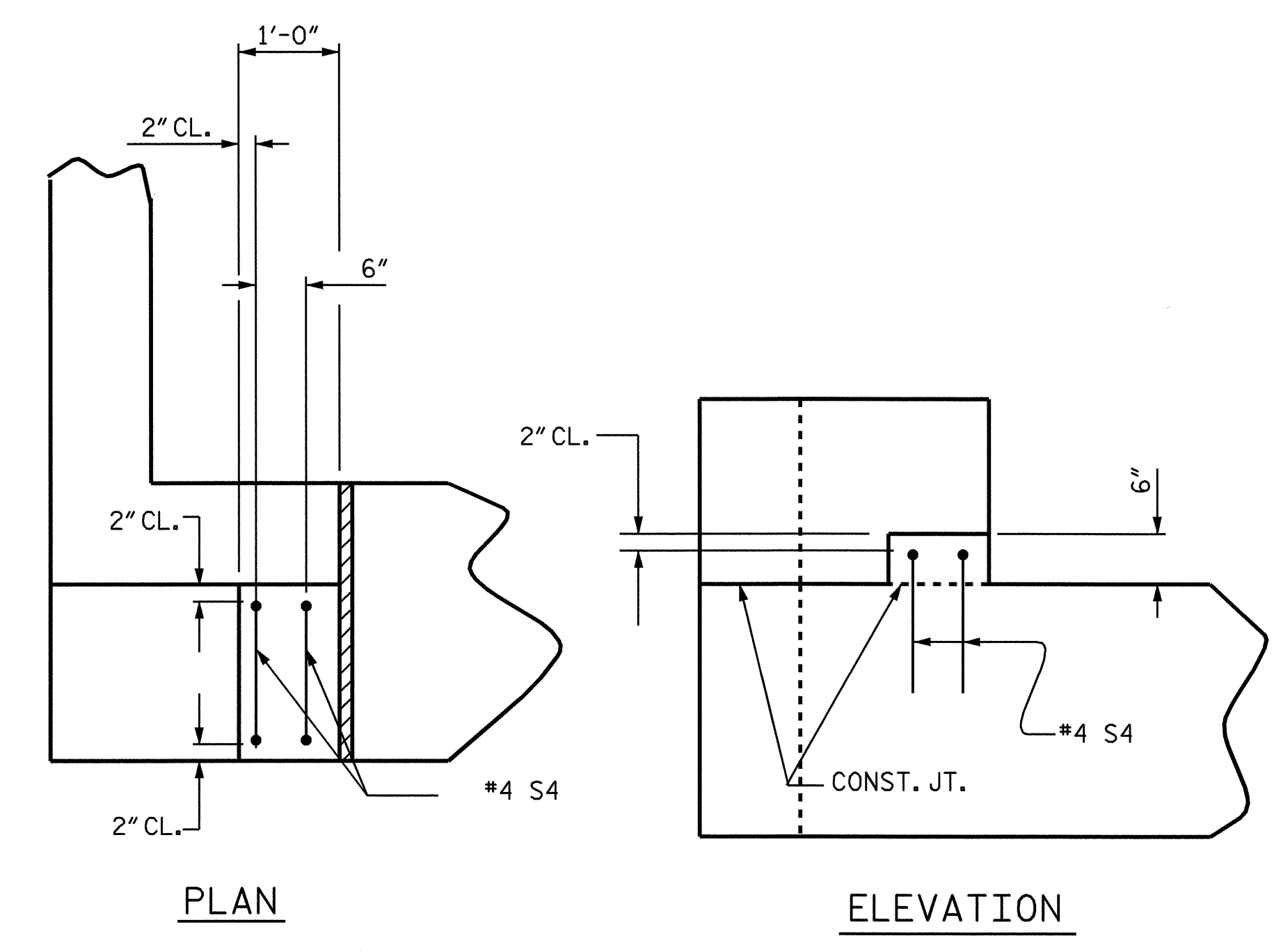
BILL OF MATERIAL					
END BENT No. 2					
BAR	No.	SIZE	TYPE	LENGTH	WEIGHT
B1	8	9	1	41'-0"	1115
B2	16	4	STR	20'-7"	220
B3	10	4	STR	2'-5"	16
D1	22	6	STR	1'-6"	50
H1	24	4	2	6'-4"	102
K1	12	4	STR	2'-6"	20
S1	37	4	3	7'-5"	183
S2	37	4	4	3'-2"	78
S3	12	4	5	6'-6"	52
S4	4	4	6	4'-5"	12
V1	36	4	STR	3'-11"	94
REINFORCING STEEL				LBS.	1942
CLASS A CONCRETE BREAKDOWN :					
POUR #1 (CAP & LOWER WINGS)				10.9 C. Y.	
POUR #2 (UPPER WINGS)				1.1 C. Y.	
POUR #3 (LATERAL GUIDES)				0.1 C. Y.	
TOTAL				12.1 C. Y.	
HP 12 X 53 STEEL PILES					
NO. = 6		LIN. FT. = 180			



ELEVATION
(TYP. BOTH WINGS)



SECTION X-X
(TYP. BOTH WINGS)



LATERAL GUIDE DETAILS
LEFT LATERAL GUIDE SHOWN. (RIGHT SIMILAR)

PROJECT NO. B-4270
SAMPSON COUNTY
STATION: 14+60.00 -L-
SHEET 2 OF 2

STATE OF NORTH CAROLINA DEPARTMENT OF TRANSPORTATION RALEIGH					
SUBSTRUCTURE					
END BENT No. 2					
REVISIONS					
NO.	BY:	DATE:	NO.	BY:	DATE:
1			3		
2			4		



DRAWN BY : R. G. EMERSON DATE : 03/04
CHECKED BY : P. C. BREWER DATE : 04/04

SHEET NO.
S-19
TOTAL SHEETS
23