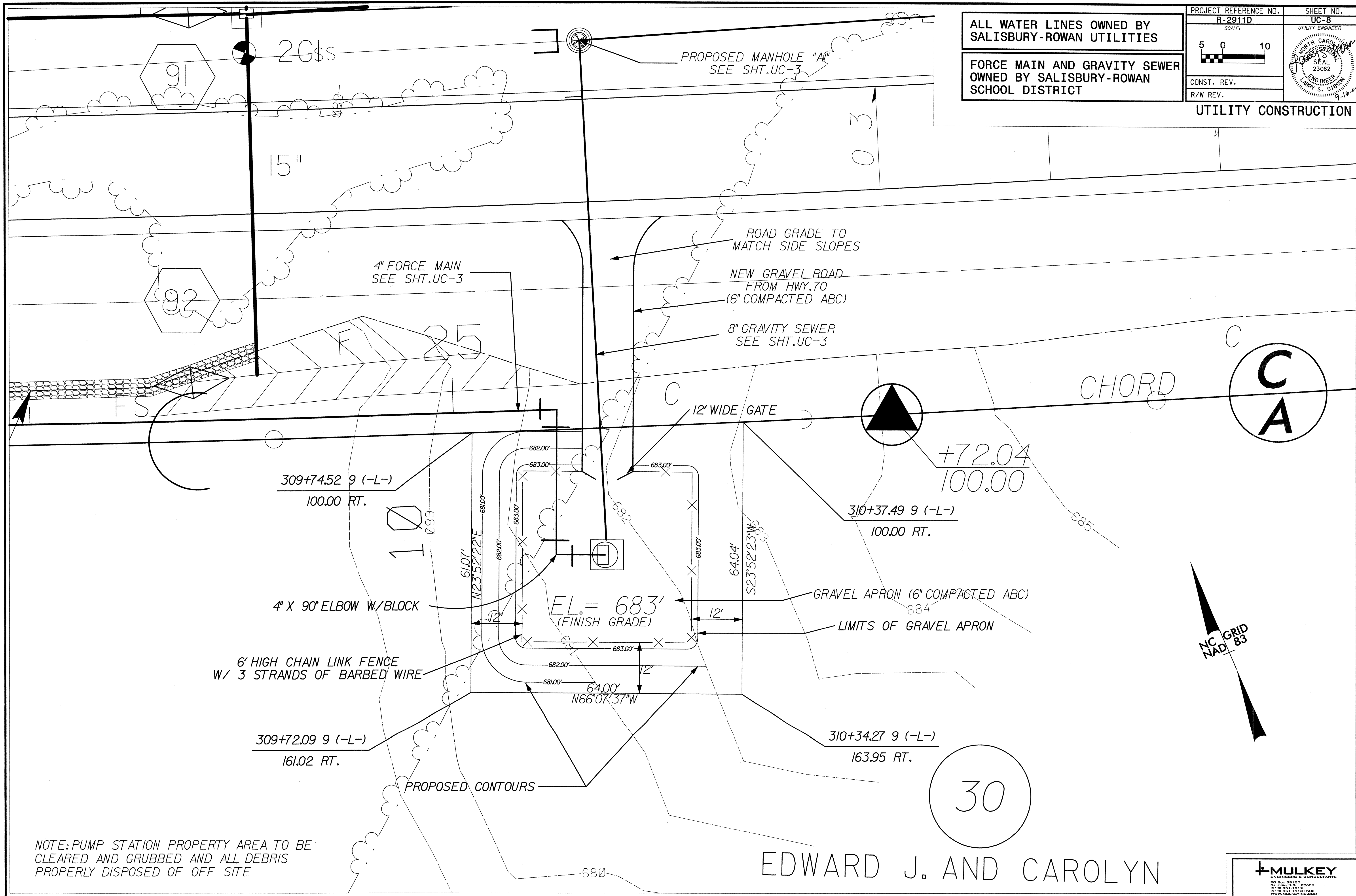


ALL WATER LINES OWNED BY SALISBURY-ROWAN UTILITIES

FORCE MAIN AND GRAVITY SEWER OWNED BY SALISBURY-ROWAN SCHOOL DISTRICT

UTILITY CONSTRUCTION



NOTE: PUMP STATION PROPERTY AREA TO BE CLEARED AND GRUBBED AND ALL DEBRIS PROPERLY DISPOSED OF OFF SITE

EDWARD J. AND CAROLYN