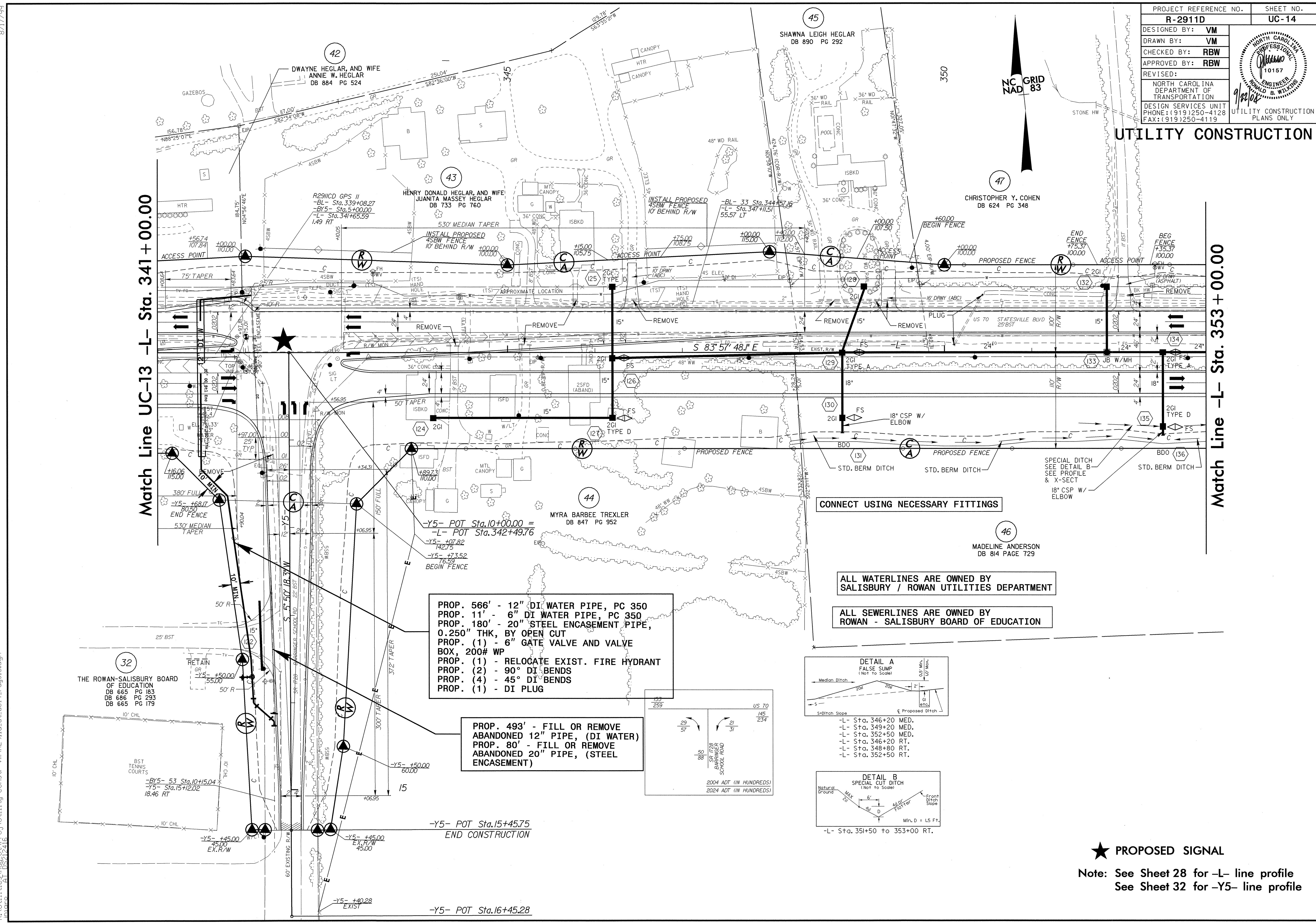


Match Line UC-13 -L- Sta. 341+00.00

Match Line -L- Sta. 353+00.00



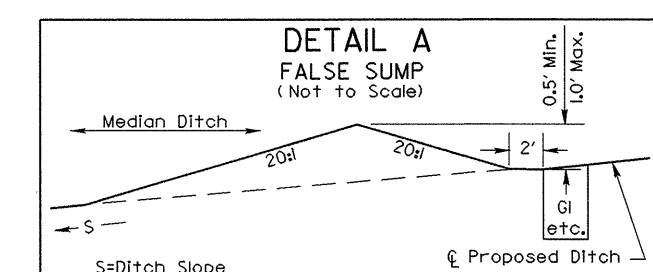
PROP. 566' - 12" DI WATER PIPE, PC 350
 PROP. 11' - 6" DI WATER PIPE, PC 350
 PROP. 180' - 20" STEEL ENCASEMENT PIPE, 0.250" THK, BY OPEN CUT
 PROP. (1) - 6" GATE VALVE AND VALVE BOX, 200# WP
 PROP. (1) - RELOCATE EXIST. FIRE HYDRANT
 PROP. (2) - 90° DI BENDS
 PROP. (4) - 45° DI BENDS
 PROP. (1) - DI PLUG

PROP. 493' - FILL OR REMOVE ABANDONED 12" PIPE, (DI WATER)
 PROP. 80' - FILL OR REMOVE ABANDONED 20" PIPE, (STEEL ENCASEMENT)

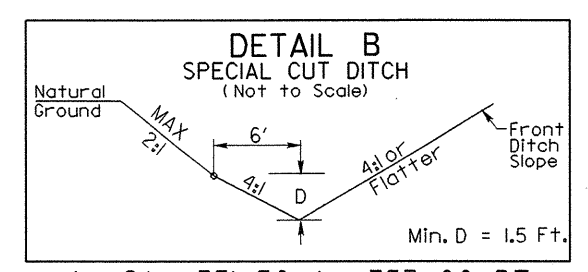
CONNECT USING NECESSARY FITTINGS

ALL WATERLINES ARE OWNED BY SALISBURY / ROWAN UTILITIES DEPARTMENT

ALL SEWERLINES ARE OWNED BY ROWAN - SALISBURY BOARD OF EDUCATION



-L- Sta. 346+20 MED.
 -L- Sta. 349+20 MED.
 -L- Sta. 352+50 MED.
 -L- Sta. 346+20 RT.
 -L- Sta. 348+80 RT.
 -L- Sta. 352+50 RT.



-L- Sta. 351+50 to 353+00 RT.

★ PROPOSED SIGNAL
 Note: See Sheet 28 for -L- line profile
 See Sheet 32 for -Y5- line profile

8/17/99
 21-SEP-2004 14:24
 R:\Utilities\Road\Proj\Utility Constr. vm\2911d.ut.uc14_rds15.dgn
 At 10:22:46