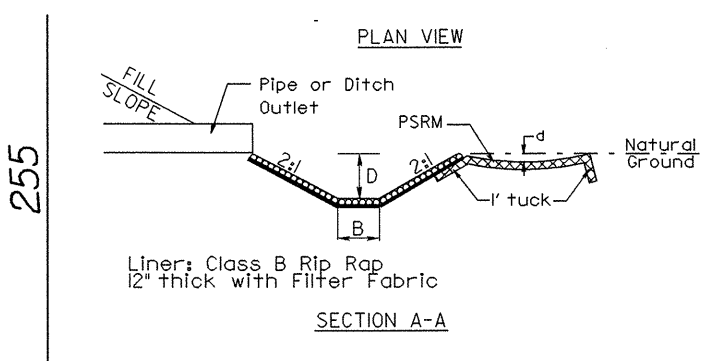
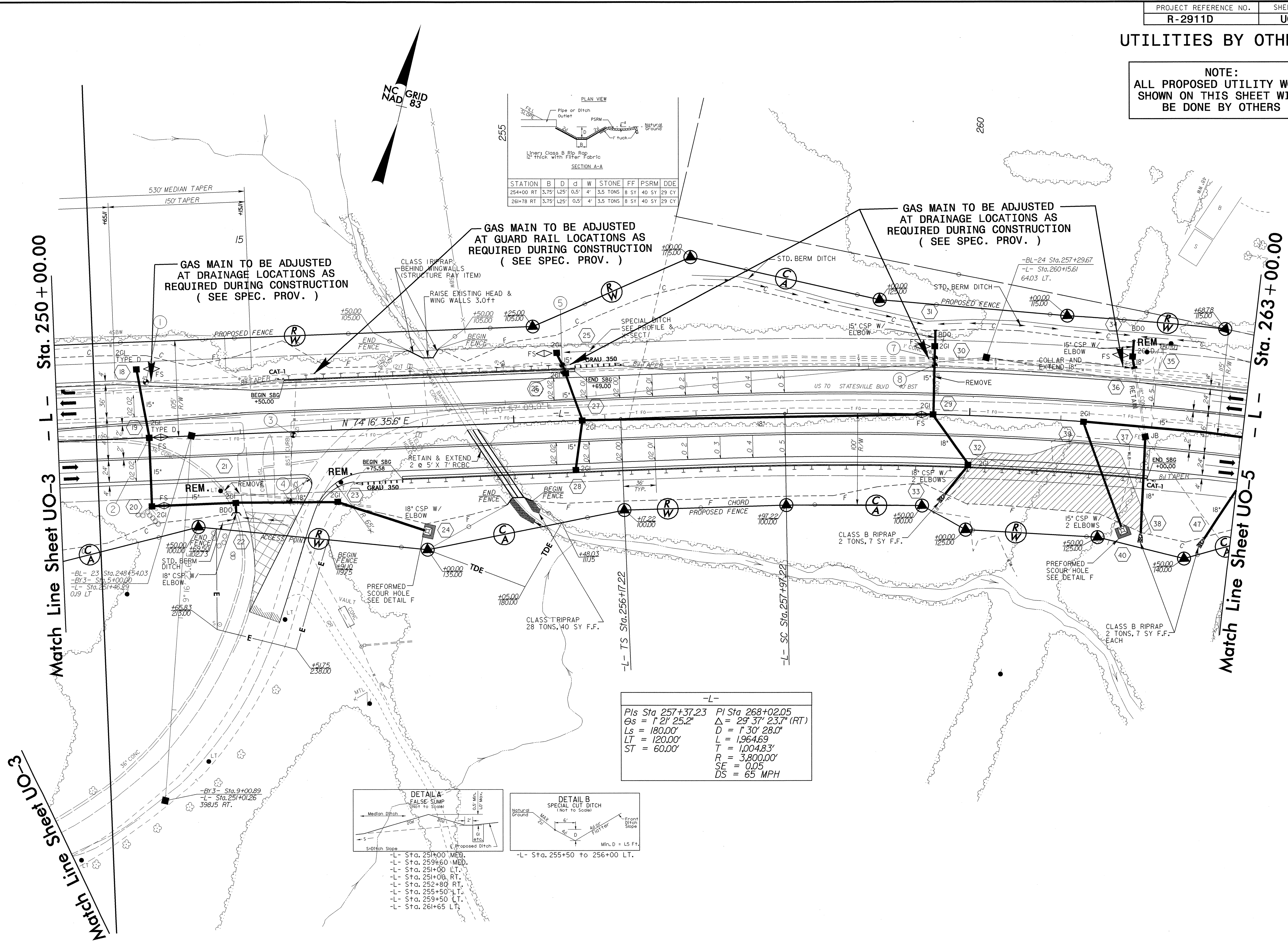


UTILITIES BY OTHERS

NOTE:
ALL PROPOSED UTILITY WORK
SHOWN ON THIS SHEET WILL
BE DONE BY OTHERS

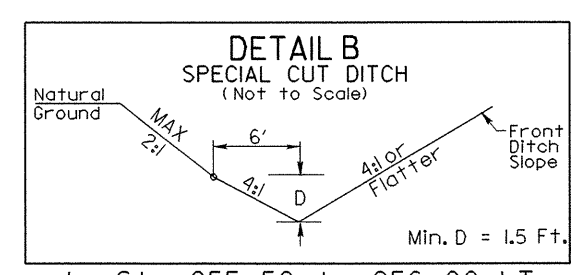
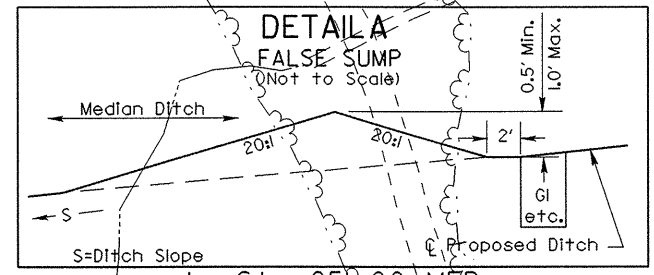
8/17/99



STATION	B	D	d	W	STONE	FF	PSRM	DDE
254+00 RT	3.75'	L25'	0.5'	4'	3.5 TONS	8 SY	40 SY	29 CY
261+78 RT	3.75'	L25'	0.5'	4'	3.5 TONS	8 SY	40 SY	29 CY

-L-

PIs Sta. 257+37.23	PI Sta. 268+02.05
$\Theta_s = 1^\circ 21' 25.2''$	$\Delta = 29^\circ 37' 23.7''$ (RT)
$L_s = 180.00'$	$D = 1^\circ 30' 28.0''$
$LT = 120.00'$	$L = 1,964.69'$
$ST = 60.00'$	$T = 1,004.83'$
	$R = 3,800.00'$
	$SE = 0.05$
	$DS = 65$ MPH



- L- Sta. 251+00 MED.
- L- Sta. 259+60 MED.
- L- Sta. 251+00 LT.
- L- Sta. 251+00 RT.
- L- Sta. 252+80 RT.
- L- Sta. 255+50 LT.
- L- Sta. 259+50 LT.
- L- Sta. 261+65 LT.

23-SEP-2004 08:01
 R:\Utilities\Proj\Utility\Others\vr2911d\ut_ut_04_r.dwg:08.dgn
 21 10/24/16