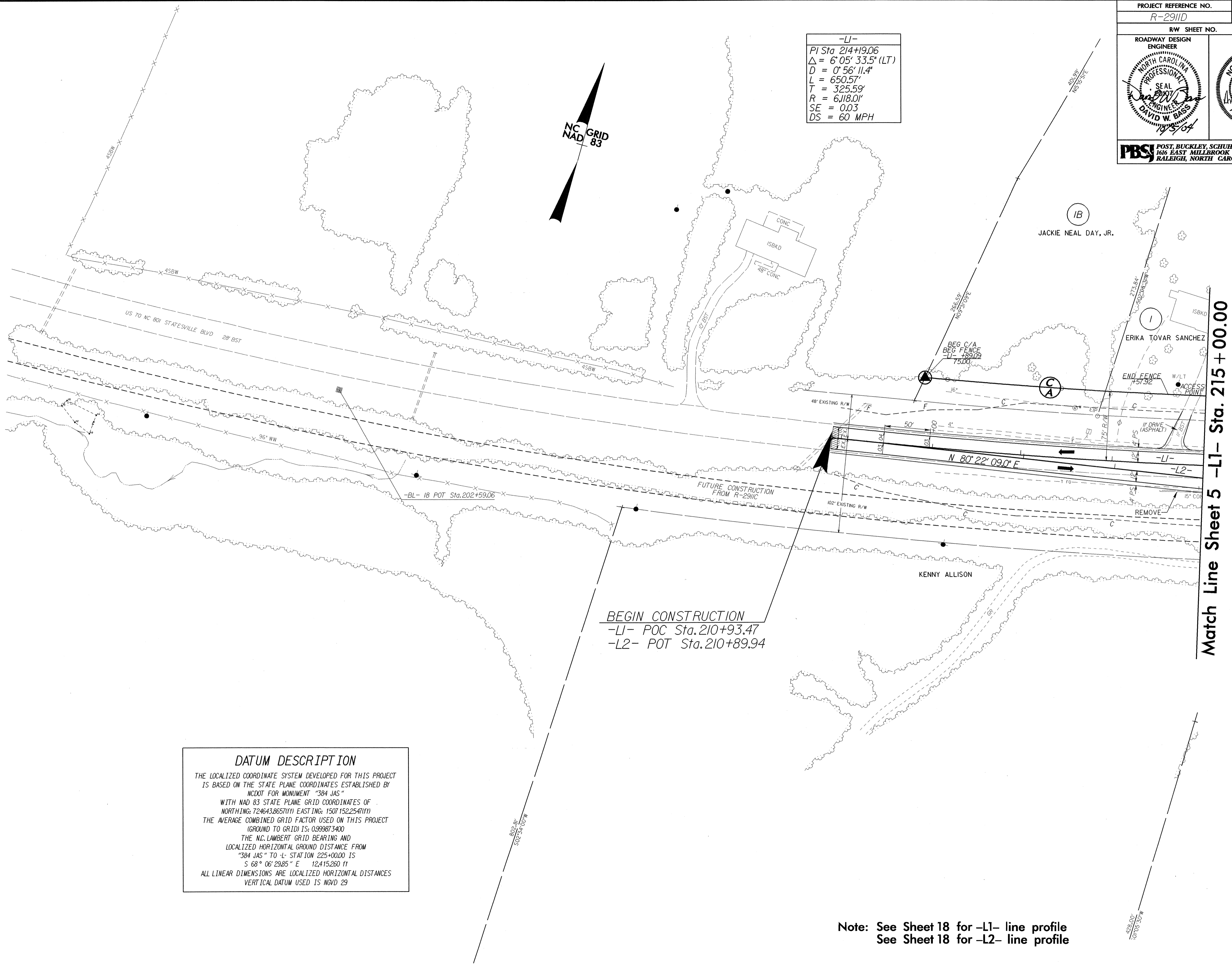


PROJECT REFERENCE NO. R-2911D	SHEET NO. 4
RW SHEET NO.	
ROADWAY DESIGN ENGINEER NORTH CAROLINA PROFESSIONAL ENGINEER SEAL 122454 DAVID W. BASS 10/5/04	HYDRAULICS ENGINEER NORTH CAROLINA PROFESSIONAL ENGINEER SEAL 122454 ANNE D. GAMBER 10/5/04
<b>PBS</b> POST BUCKLEY, SCHUH & JERNIGAN, INC. 1616 EAST MILLBROOK ROAD, SUITE 310 RALEIGH, NORTH CAROLINA 27609	

-L1-  
 PI Sta 214+19.06  
 $\Delta = 6^{\circ}05'33.5"$  (LT)  
 $D = 0^{\circ}56'11.4"$   
 $L = 650.57'$   
 $T = 325.59'$   
 $R = 6,118.01'$   
 $SE = 0.03$   
 $DS = 60$  MPH



Match Line Sheet 5 -L1- Sta. 215+00.00

BEGIN CONSTRUCTION  
 -L1- POC Sta. 210+93.47  
 -L2- POT Sta. 210+89.94

**DATUM DESCRIPTION**  
 THE LOCALIZED COORDINATE SYSTEM DEVELOPED FOR THIS PROJECT IS BASED ON THE STATE PLANE COORDINATES ESTABLISHED BY NCDOT FOR MONUMENT "384 JAS"  
 WITH NAD 83 STATE PLANE GRID COORDINATES OF  
 NORTHING: 724643.865(111) EASTING: 1507152.254(111)  
 THE AVERAGE COMBINED GRID FACTOR USED ON THIS PROJECT (GROUND TO GRID) IS: 0.999873400  
 THE N.C. LAMBERT GRID BEARING AND LOCALIZED HORIZONTAL GROUND DISTANCE FROM "384 JAS" TO -L- STATION 225+00.00 IS  
 $S 68^{\circ}06'29.85"$  E 12415.260 ft  
 ALL LINEAR DIMENSIONS ARE LOCALIZED HORIZONTAL DISTANCES  
 VERTICAL DATUM USED IS NGVD 29

Note: See Sheet 18 for -L1- line profile  
 See Sheet 18 for -L2- line profile

REVISIONS

8/17/99

05-OCT-2004 12:40 P:\05\2911d\_rdy\_s04\_psh.dgn