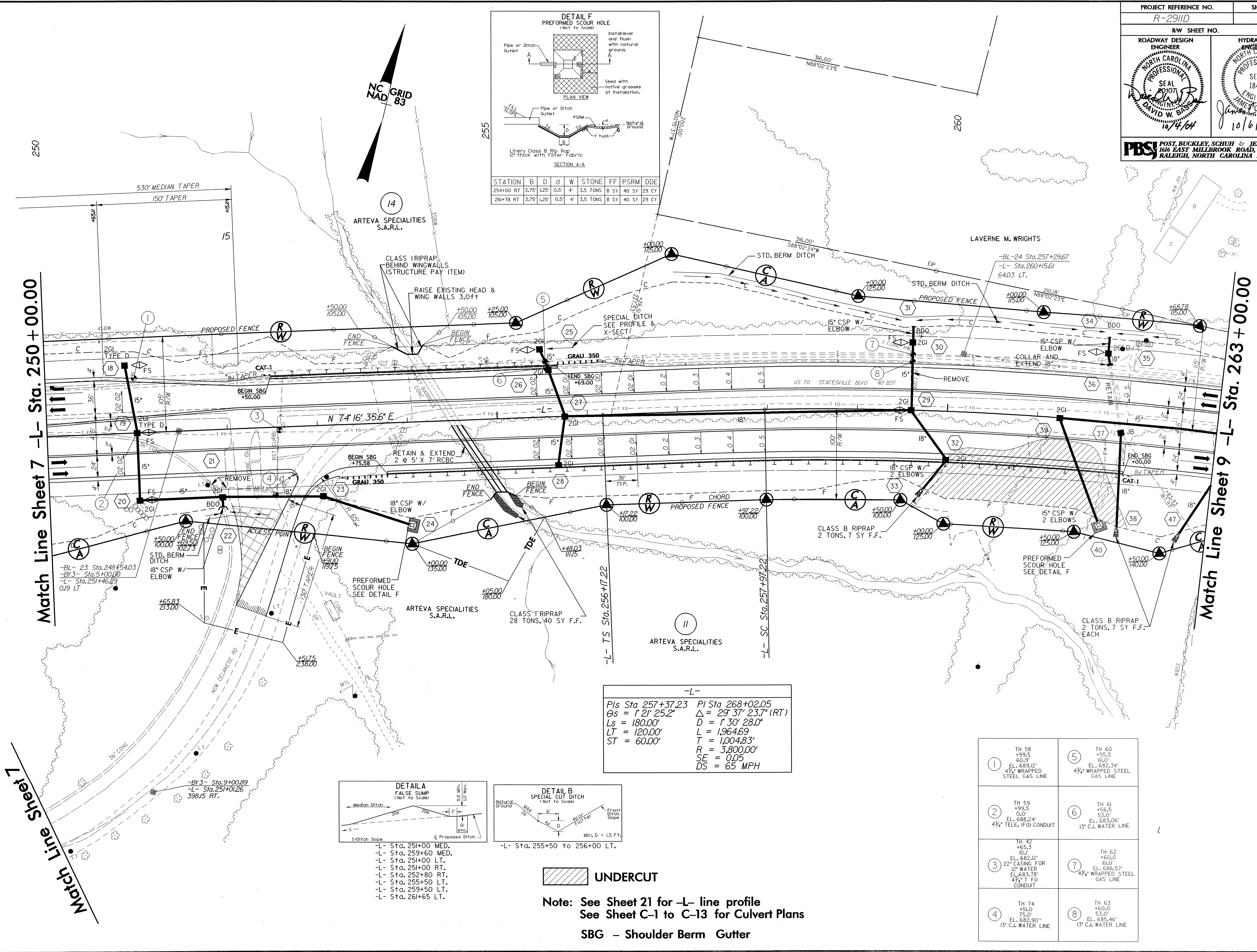
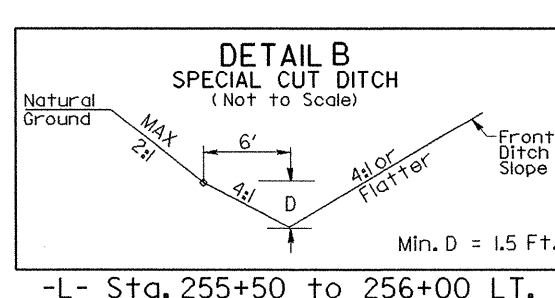
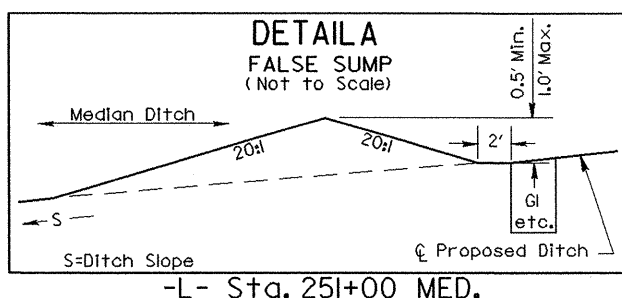


STATION	B	D	d	W	STONE	FF	PSRM	DDE
254+00 RT	3.75'	1.25'	0.5'	4'	3.5 TONS	8 SY	40 SY	29 CY
261+78 RT	3.75'	1.25'	0.5'	4'	3.5 TONS	8 SY	40 SY	29 CY



-L-

PIs Sta 257+37.23	PI Sta 268+02.05
$\Theta_s = 1^\circ 21' 25.2''$	$\Delta = 29^\circ 37' 23.7''$ (RT)
$L_s = 180.00'$	$D = 1^\circ 30' 28.0''$
$LT = 120.00'$	$L = 1,964.69'$
$ST = 60.00'$	$T = 1,004.83'$
	$R = 3,800.00'$
	$SE = 0.05$
	$DS = 65$ MPH



UNDERCUT

Note: See Sheet 21 for -L- line profile
See Sheet C-1 to C-13 for Culvert Plans
SBG - Shoulder Berm Gutter

① TH 58 +99.5 60.3' EL. 689.12' 4 1/2" WRAPPED STEEL GAS LINE	⑤ TH 60 +55.5 41.0' EL. 682.34' 4 1/2" WRAPPED STEEL GAS LINE
② TH 59 +99.5 60.3' EL. 688.24' 4 1/2" TELE. (FO) CONDUIT	⑥ TH 61 +56.5 53.0' EL. 683.06' 13" C.I. WATER LINE
③ TH 42 +65.3 10.1' EL. 682.12' 22" CASING FOR 12" WATER EL. 683.78' 4 1/2" T FO CONDUIT	⑦ TH 62 +60.0 61.0' EL. 686.57' 4 1/2" WRAPPED STEEL GAS LINE
④ TH 74 +51.0 75.0' EL. 682.90' 13" C.I. WATER LINE	⑧ TH 63 +60.0 53.0' EL. 685.46' 13" C.I. WATER LINE

REVISIONS

8/17/99

04-OCT-2004 18:34
P:\2911D\Proj\N-2911d_r.dwg s08-ps.hudgn