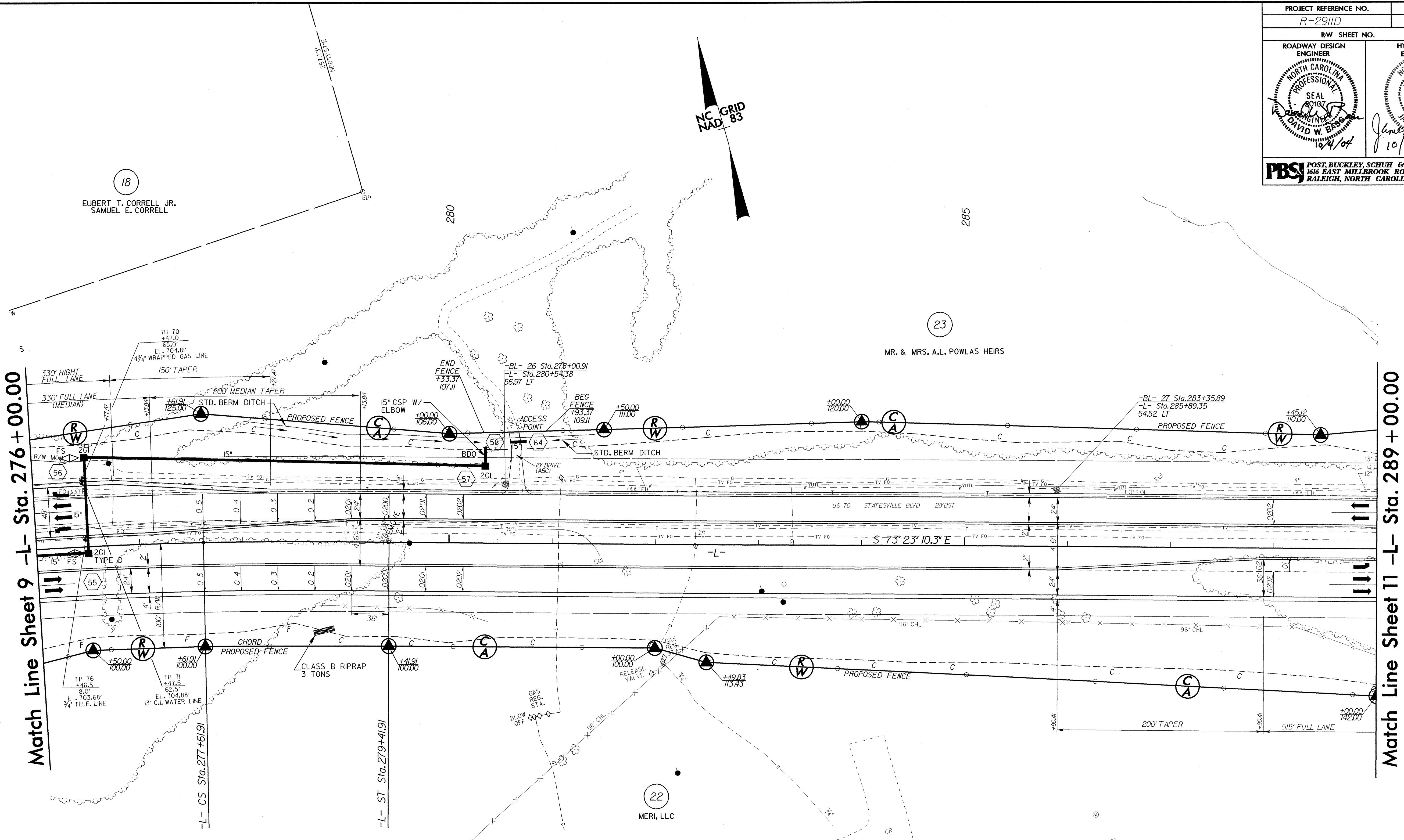


PROJECT REFERENCE NO. R-2911D	SHEET NO. 10
RW SHEET NO.	
ROADWAY DESIGN ENGINEER NORTH CAROLINA PROFESSIONAL SEAL DAVID W. BASKIN 6/4/04	HYDRAULICS ENGINEER NORTH CAROLINA PROFESSIONAL SEAL 18462 JANET S. BASKIN 10/6/04
PBS POST, BUCKLEY, SCHUH & JERNIGAN, INC. 1616 EAST MILLBROOK ROAD, SUITE 310 RALEIGH, NORTH CAROLINA 27609	

8/17/99
 04-DCT-2004.18.36
 RE: Roadway (Proj) R-2911d.rdw - s10.psh.dgn
 12:50

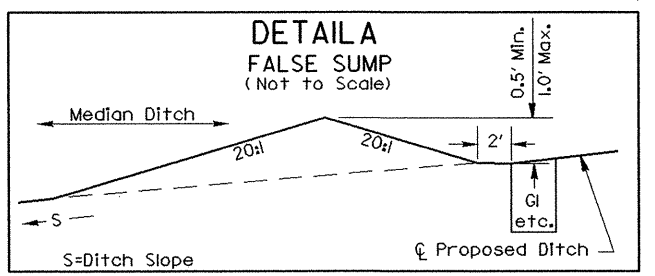


Match Line Sheet 9 -L- Sta. 276 + 00.00

Match Line Sheet 11 -L- Sta. 289 + 00.00



PI Sta 268+02.05 $\Delta = 29^\circ 37' 23.7''$ (RT) $D = 1' 30'' 28.0''$ $L = 1,964.69$ $T = 1,004.83'$ $R = 3,800.00'$ $SE = 0.05$ $DS = 65$ MPH	PI s Sta 278+21.91 $\theta_s = 1' 21'' 25.2''$ $L_s = 180.00'$ $LT = 120.00'$ $ST = 60.00'$
---	---



-L- Sta. 276+50 MED.
 -L- Sta. 276+50 LT.

Note: See Sheet 23 for -L- line profile