

5/28/99

BM-1, STEEL NAIL SET IN A STONE ALONG A FIELD ROAD, NORTH OF OLD US 70.
N 7216411645 E 1523,207.8728
BL STA.268+45.84 544.53' LT.
ELEV.731.4

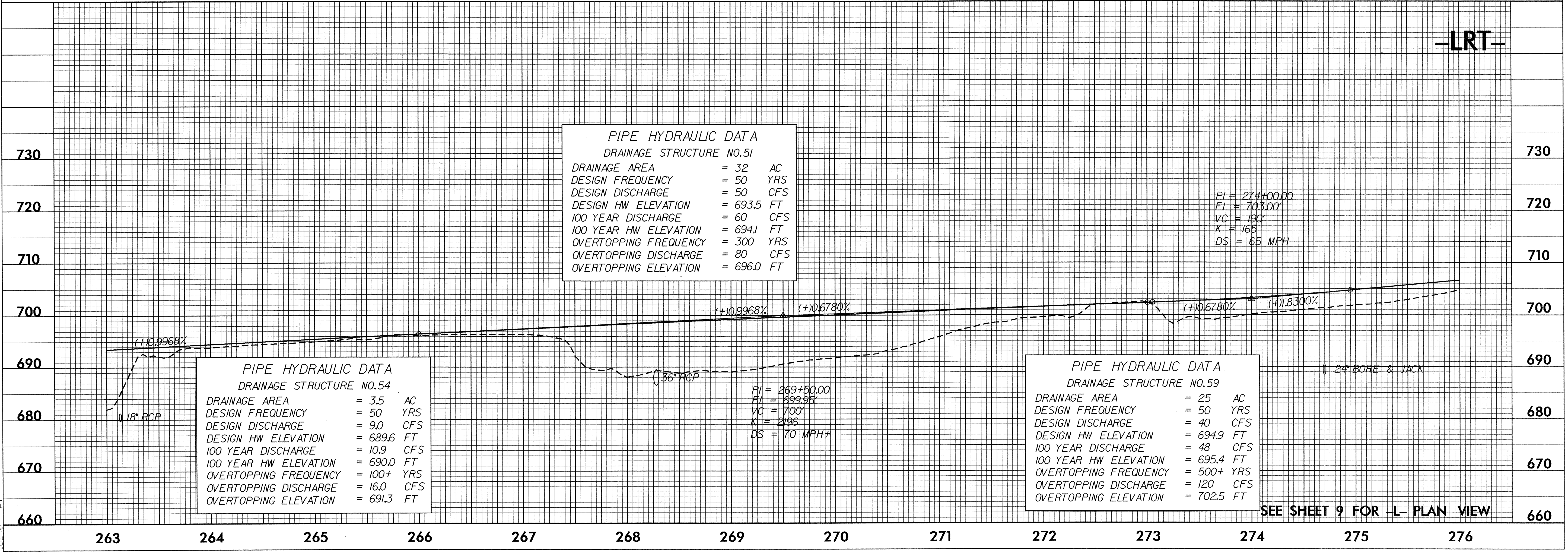
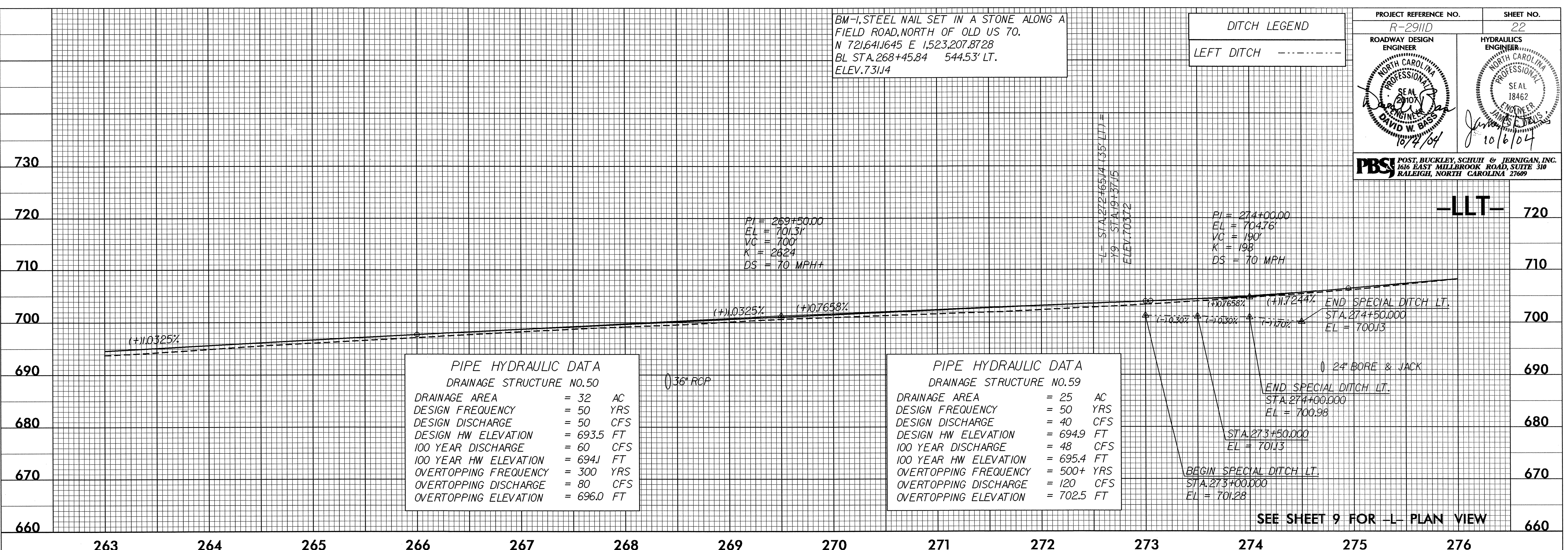
DITCH LEGEND
LEFT DITCH - - - - -

PROJECT REFERENCE NO. R-2911D SHEET NO. 22

ROADWAY DESIGN ENGINEER
DAVID W. BASS
10/7/04

HYDRAULICS ENGINEER
JAMES P. DRIS
10/6/04

PBS POST, BUCKLEY, SCHUH & JERNIGAN, INC.
1616 EAST MILLBROOK ROAD, SUITE 310
RALEIGH, NORTH CAROLINA 27609



04-OCT-2004 18:47
R:\Roadway\Projects\2911\Drawings\p1_psh.dgn
16250