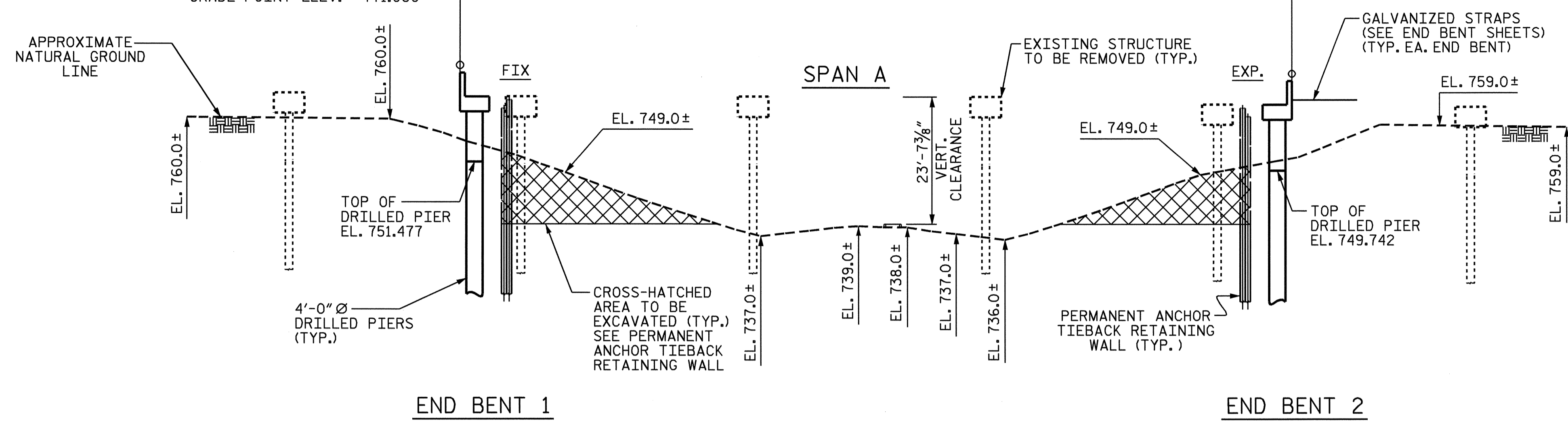
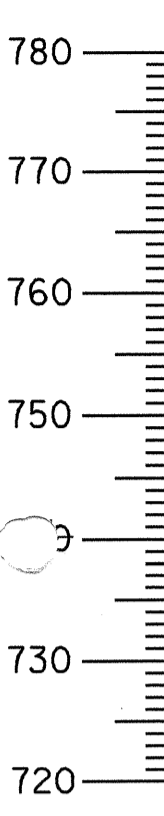


+2.5666%    -4.0850%  
**GRADE DATA LEFT LANE**

P.I. = 230+35.00 -L-  
 EL. = 779.36  
 V.C. = 1035.0'

FILL FACE @ END BENT 1  
 STA. 229+78.43 -L-  
 GRADE POINT ELEV. = 771.080

FILL FACE @ END BENT 2  
 STA. 231+48.80 -L-  
 GRADE POINT ELEV. = 769.474

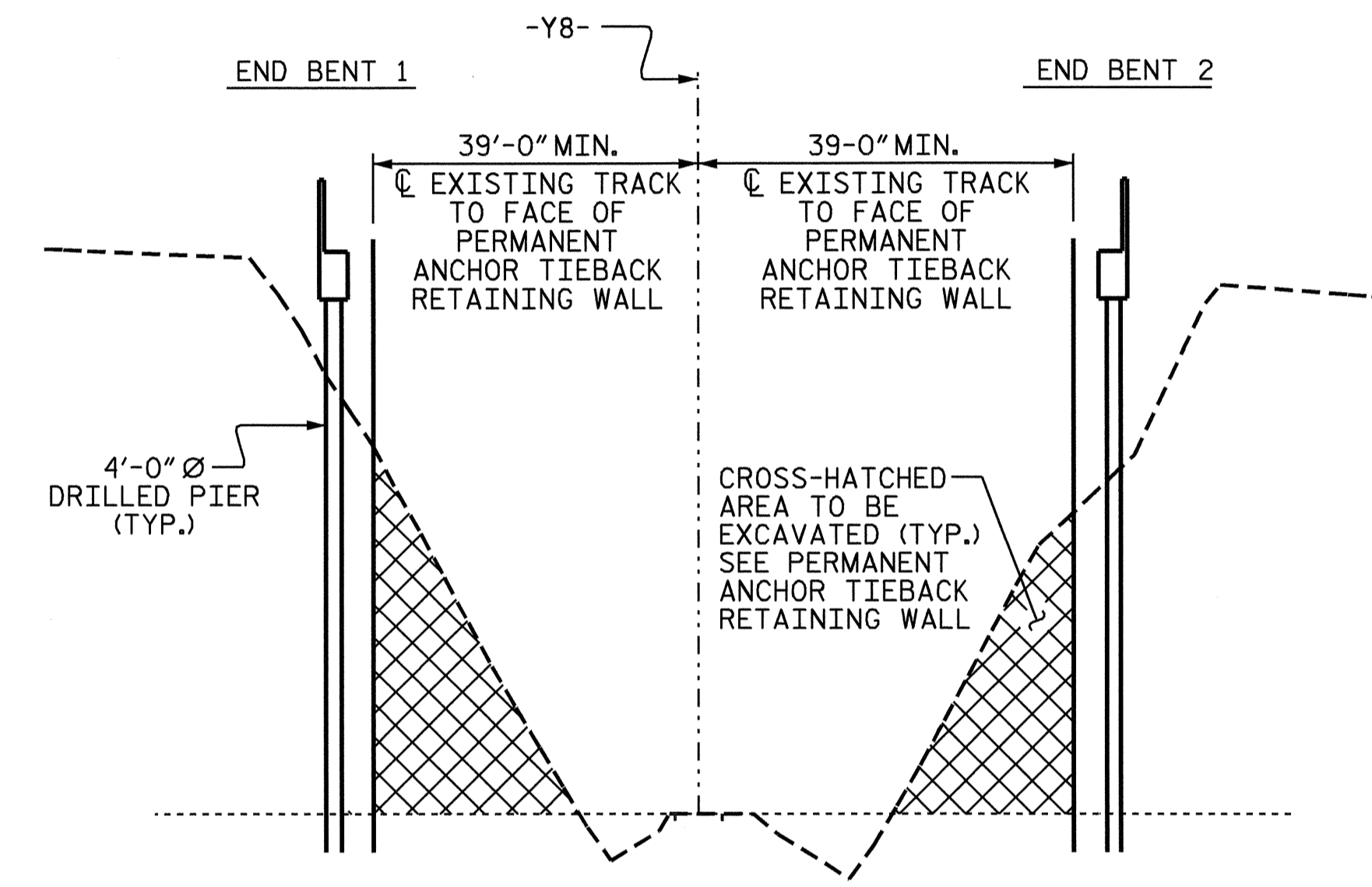


**TOP OF RAIL ELEVATIONS**

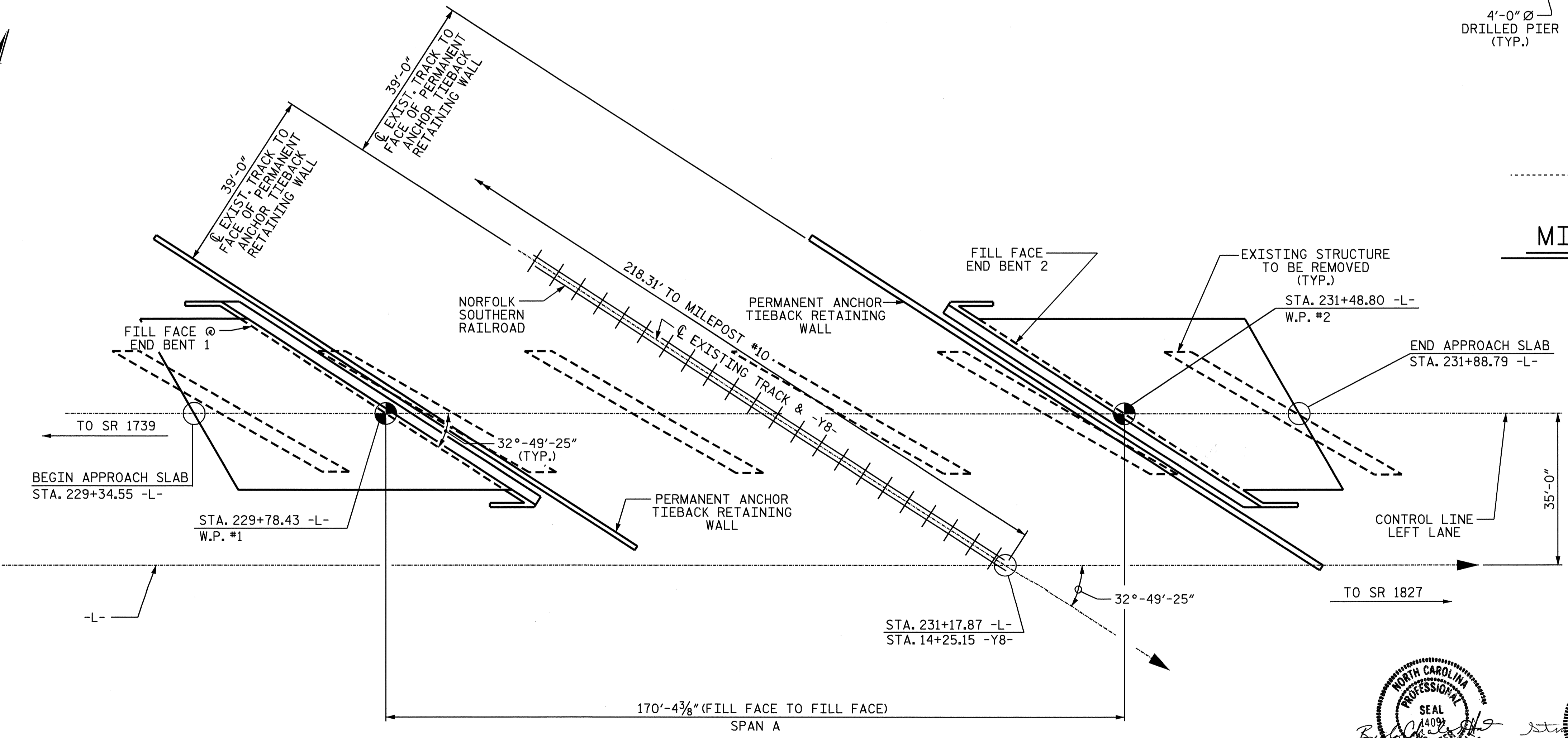
TRACK STATION	LEFT RAIL	RIGHT RAIL
12+71.315		739.554
13+17.091		739.073
13+62.696		738.711
14+14.804		738.220
12+71.282	739.538	
13+17.085	739.096	
13+62.718	738.694	
14+14.906	738.210	

**SECTION ALONG CONTROL LINE LEFT LANE**

(SECTIONS @ END BENTS ARE TAKEN AT RIGHT ANGLES.)



**MINIMUM CLEARANCE - RAILROAD**  
 (LOOKING DOWN STATION ALONG -Y8-)



**PLAN**

PROJECT NO. R-2911D  
ROWAN COUNTY  
 STATION: 231+17.87 -L-  
14+25.15 -Y8-

SHEET 1 OF 3 MILE POST #9.97 REPLACES BRIDGE #71

STATE OF NORTH CAROLINA  
 DEPARTMENT OF TRANSPORTATION  
 RALEIGH  
**GENERAL DRAWING**  
 FOR BRIDGE OVER NORFOLK  
 SOUTHERN RAILROAD ON US 70  
 BETWEEN SR 1739 AND NC 801  
 (LEFT LANE)



DRAWN BY : M.K. BEARD DATE : 08/06/04  
 CHECKED BY : J.P. ADAMS DATE : 8/30/04

REVISIONS						SHEET NO.
NO.	BY:	DATE:	NO.	BY:	DATE:	S-1
1			3			TOTAL SHEETS
2			4			120