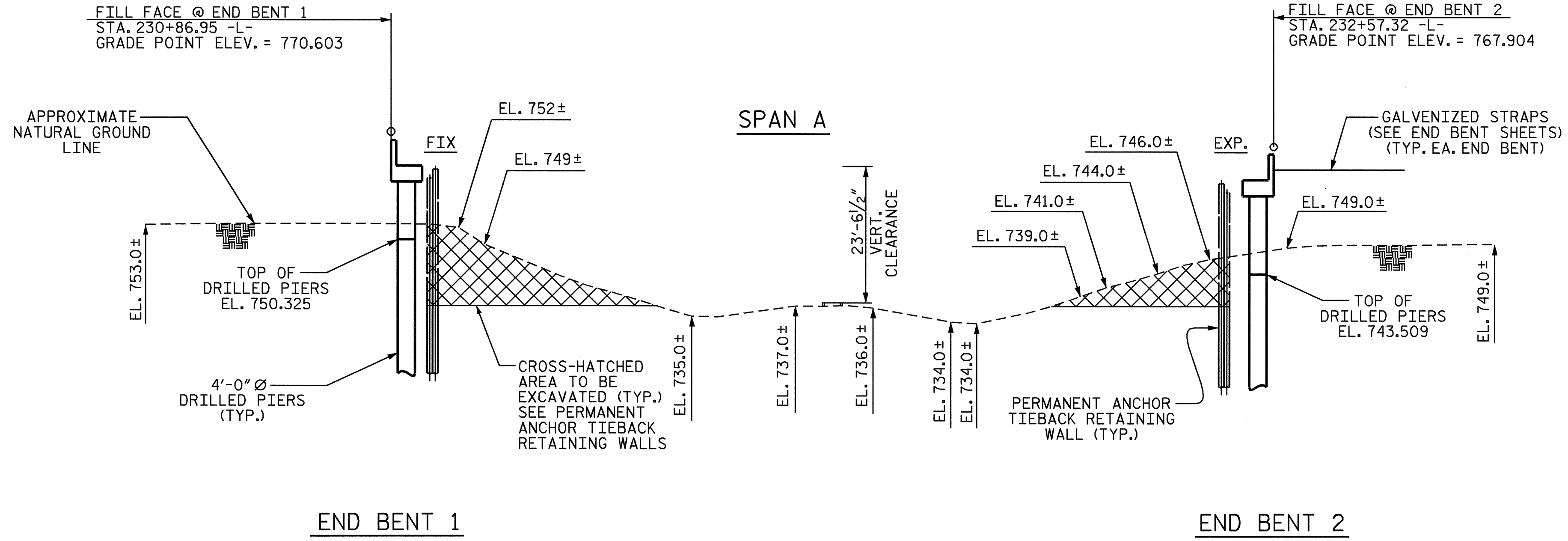
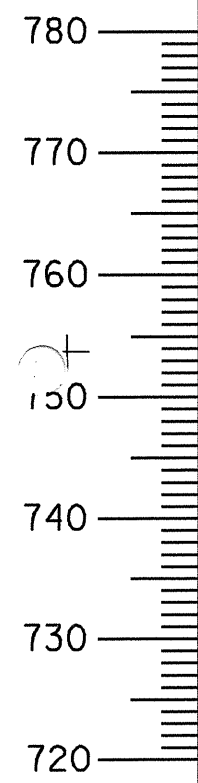


+2.5651% -4.1620%

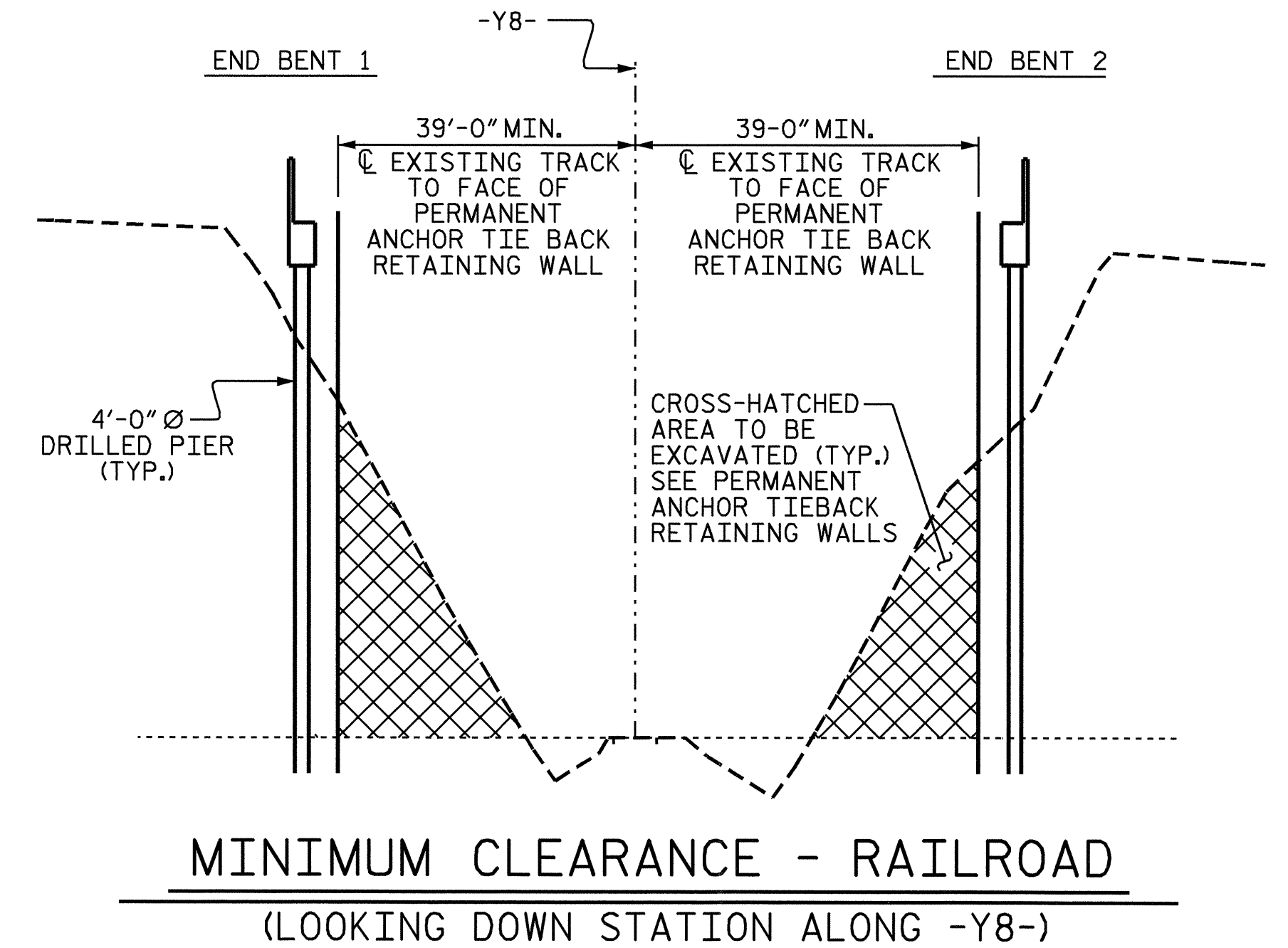
GRADE DATA -LRT-

P.I. = 230+50.00 -L-
 EL. = 779.73
 V.C. = 1,045.0'

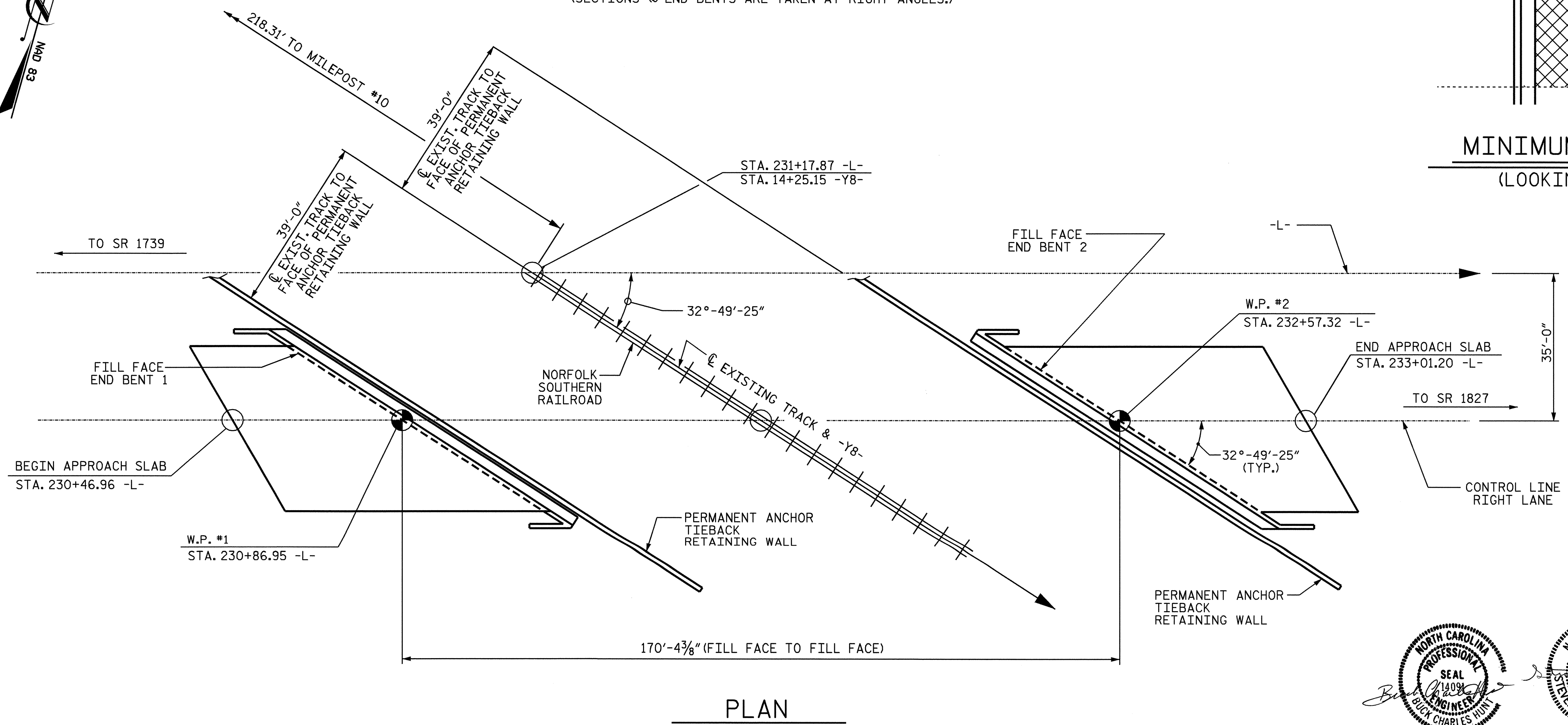


TOP OF RAIL ELEVATIONS

| TRACK STATION | LEFT RAIL | RIGHT RAIL |
|---------------|-----------|------------|
| 14+65.060 | | 737.817 |
| 15+14.380 | | 737.439 |
| 15+64.590 | | 737.028 |
| 14+65.221 | 737.838 | |
| 15+14.488 | 737.430 | |
| 15+64.626 | 737.030 | |



SECTION ALONG CONTROL LINE RIGHT LANE
 (SECTIONS @ END BENTS ARE TAKEN AT RIGHT ANGLES.)



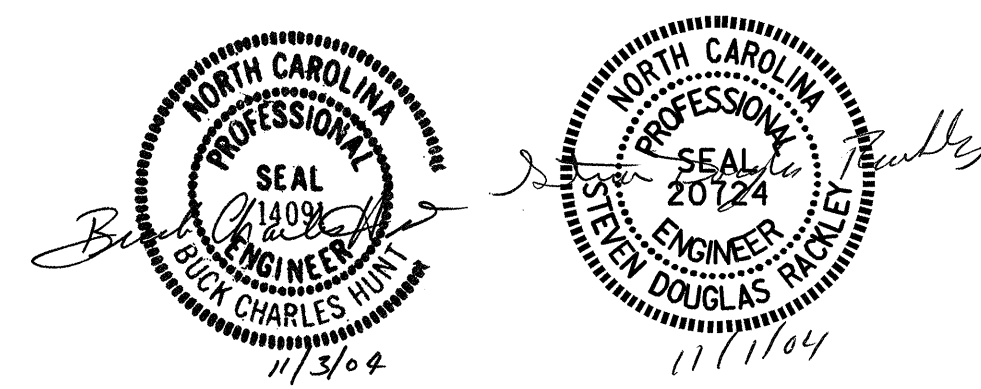
PROJECT NO. R-2911D
 ROWAN COUNTY
 STATION: 231+17.87 -L-
14+25.15 -Y8-

SHEET 1 OF 3 MILE POST #9.97 BRIDGE #416

STATE OF NORTH CAROLINA
 DEPARTMENT OF TRANSPORTATION
 RALEIGH
GENERAL DRAWING
 FOR BRIDGE OVER NORFOLK
 SOUTHERN RAILROAD ON US 70
 BETWEEN SR 1739 AND NC 801
 (RIGHT LANE)

| REVISIONS | | | | SHEET NO. |
|-----------|-----|-------|-----|-----------|
| NO. | BY: | DATE: | NO. | DATE: |
| 1 | | | 3 | |
| 2 | | | 4 | |

TOTAL SHEETS: 120



DRAWN BY: M.K. BEARD DATE: 08/10/04
 CHECKED BY: J.P. ADAMS DATE: 8/31/04