

**NOTES**

STIRRUPS IN CAP MAY BE SHIFTED AS NECESSARY TO CLEAR ANCHOR BOLTS.

HOOKS ON "V" BARS MAY BE TURNED AS NECESSARY FOR PLACING REINFORCING STEEL.

FOR EPOXY PROTECTIVE COATING, SEE SPECIAL PROVISIONS.

BACKWALL SHALL BE PLACED BEFORE APPLYING THE EPOXY PROTECTIVE COATING.

THE TOP SURFACE AREAS OF THE END BENT CAPS SHALL BE CURED IN ACCORDANCE WITH THE STANDARD SPECIFICATIONS EXCEPT THAT THE MEMBRANE CURING COMPOUND METHOD SHALL NOT BE USED.

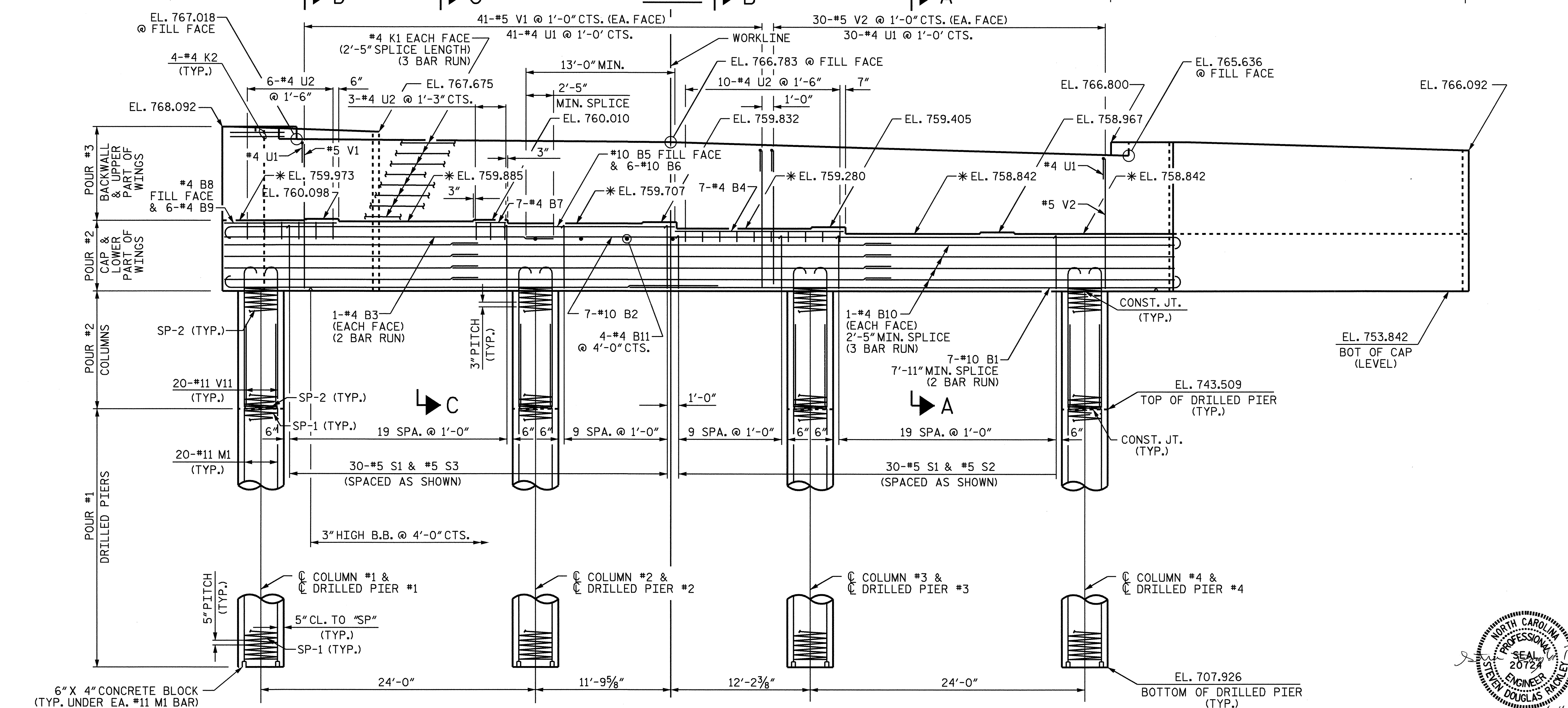
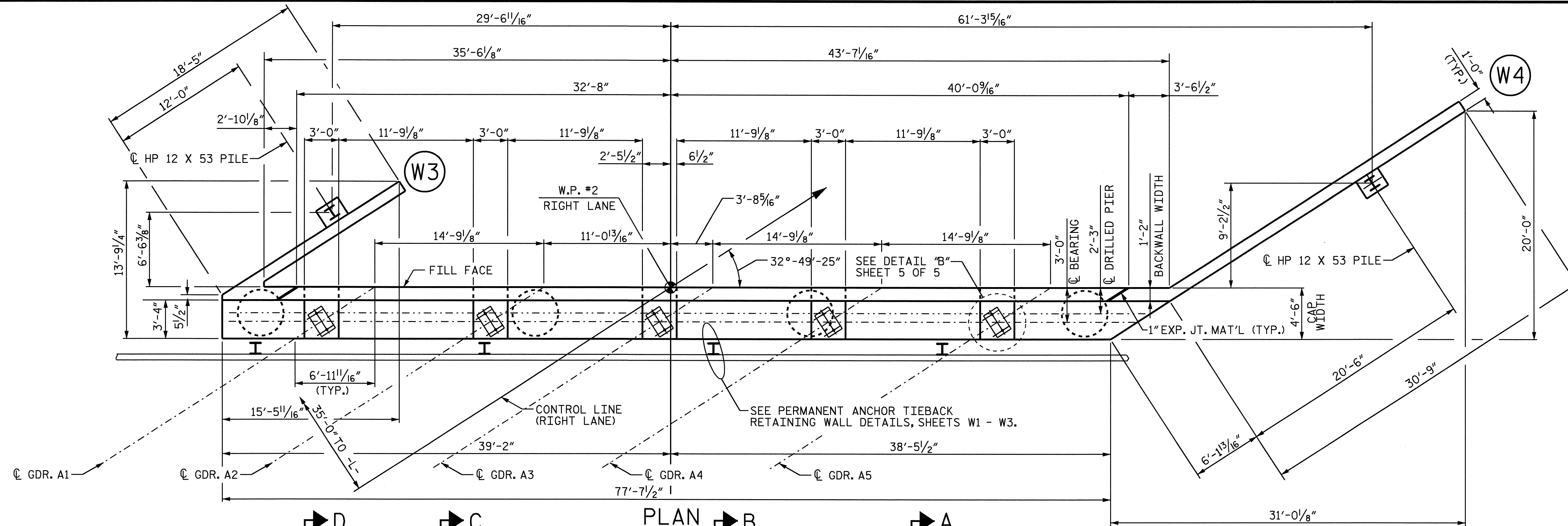
THE TOP SURFACE OF THE END BENT CAP, EXCEPT THE BRIDGE SEAT BUILDUPS, SHALL BE SLOPED TRANSVERSELY FROM THE FILL FACE TO THE BACK AT THE RATE OF 2%.

ALL STEEL IN THE DRILLED PIERS IS INCLUDED IN THE PAY ITEMS FOR "REINFORCING STEEL" AND "SPIRAL COLUMN REINFORCING STEEL".

THE CONTRACTOR'S ATTENTION IS CALLED TO THE FACT THAT THE LONGITUDINAL REINFORCEMENT FOR THE DRILLED PIERS IS DETAILED WITH 3 FEET OF EXTRA LENGTH.

THE LOCATION OF THE CONSTRUCTION JOINT IN THE DRILLED PIERS IS BASED ON AN APPROXIMATE GROUND LINE ELEVATION. IF THE CONSTRUCTION JOINT IS ABOVE THE ACTUAL GROUND ELEVATION, THE CONTRACTOR SHALL PLACE THE CONSTRUCTION JOINT 1 FOOT BELOW THE GROUND LINE.

EPOXY COAT THE END BENT CAP AFTER ADJUSTMENTS ARE MADE TO BEARINGS AND ANCHOR BOLTS ARE GROUTED.



**ELEVATION**

\* SEE SHEET 4 OF 5 FOR LOCATION OF ELEVATION BETWEEN BRIDGE SEAT BUILDUPS.

PILES ON WINGS NOT SHOWN FOR CLARITY

DRAWN BY: R. L. CHESSON DATE: 2004 AUG  
 CHECKED BY: S. H. SOCKWELL DATE: 9/04

PROJECT NO. R-2911D  
ROWAN COUNTY  
 STATION: 231+17.87 -L-  
14+25.15 -Y8-

SHEET 1 OF 5  
 STATE OF NORTH CAROLINA  
 DEPARTMENT OF TRANSPORTATION  
 SUBSTRUCTURE  
 END BENT #2  
 RIGHT LANE

REVISIONS						SHEET NO. S-46
NO.	BY:	DATE:	NO.	BY:	DATE:	
1			3			TOTAL SHEETS 120
2			4			

