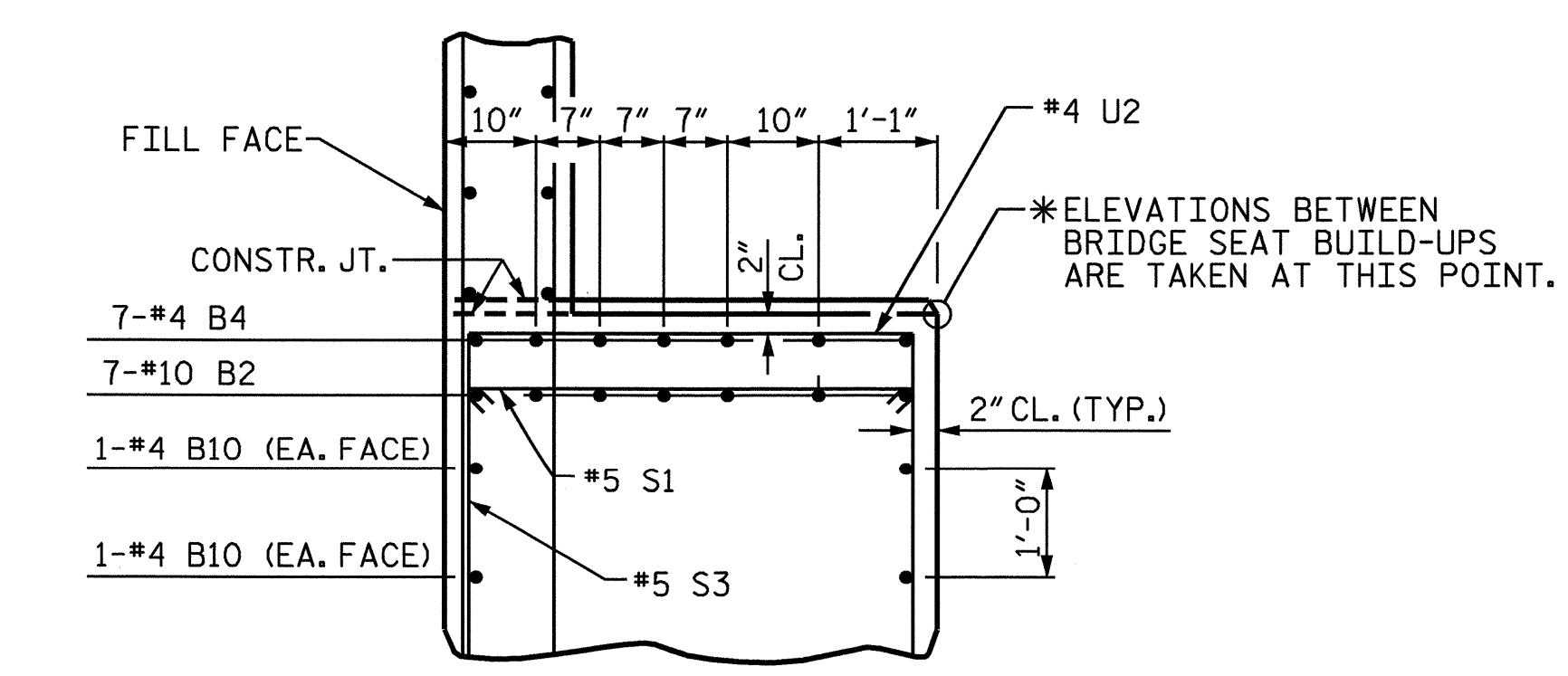
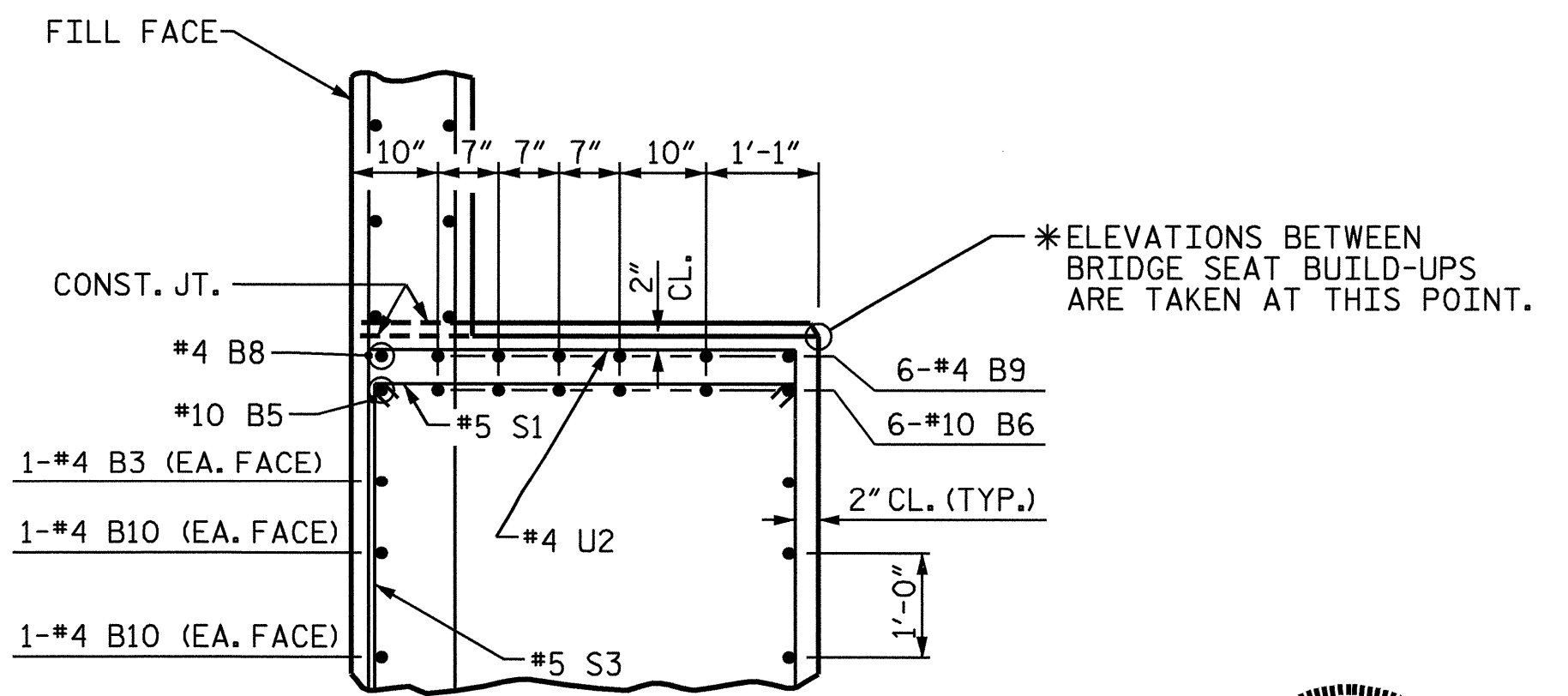


SECTION A-A

SECTION C-C

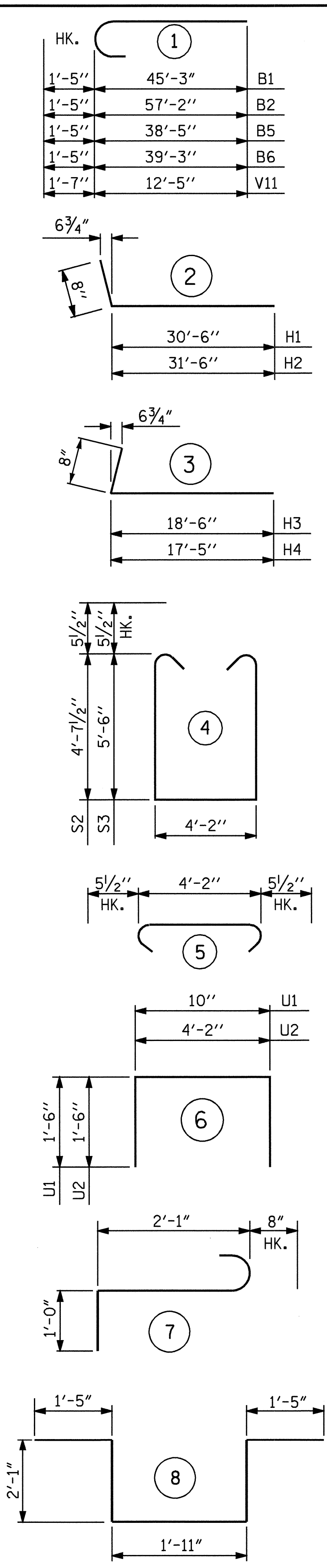


PARTIAL SECTION B-B



PARTIAL SECTION D-D

BAR TYPES



BILL OF MATERIAL

BAR NO.	SIZE	TYPE	LENGTH	WEIGHT	BAR NO.	SIZE	TYPE	LENGTH	WEIGHT		
B1	14	10	1	46'-8"	2,811	S1	60	5	5	5'-1"	318
B2	7	10	1	58'-7"	1,765	S2	30	5	4	14'-4"	448
B3	4	4	STR.	18'-3"	49	S3	30	5	4	16'-1"	503
B4	7	4	STR.	14'-10"	69	S4	6	6	7	3'-9"	34
B5	1	10	1	39'-10"	171	S5	2	6	8	8'-11"	27
B6	6	10	1	40'-8"	1050						
B7	7	4	STR.	2'-8"	12	U1	71	4	6	3'-10"	182
B8	1	4	STR.	8'-10"	6	U2	19	4	6	7'-2"	91
B9	6	4	STR.	9'-9"	39						
B10	24	4	STR.	29'-3"	469	V1	82	5	STR.	12'-3"	1,048
B11	4	4	STR.	4'-2"	11	V2	60	5	STR.	11'-5"	714
						V3	14	5	STR.	13'-6"	197
H1	15	7	2	31'-2"	956	V4	16	5	STR.	13'-8"	228
H2	15	7	2	32'-2"	986	V5	14	5	STR.	13'-10"	202
H3	16	7	3	19'-2"	627	V6	14	5	STR.	11'-11"	174
H4	16	7	3	18'-1"	591	V7	14	5	STR.	12'-1"	176
						V8	16	5	STR.	12'-3"	204
K1	48	4	STR.	29'-4"	941	V9	15	5	STR.	12'-5"	194
K2	8	4	STR.	4'-9"	25	V10	10	5	STR.	12'-7"	131
						V11	80	11	1	14'-0"	5,951
M1	80	11	STR.	45'-7"	19,375						
					TOTAL REINFORCING STEEL (LBS)					40,775	

DRILLED PIER QUANTITIES

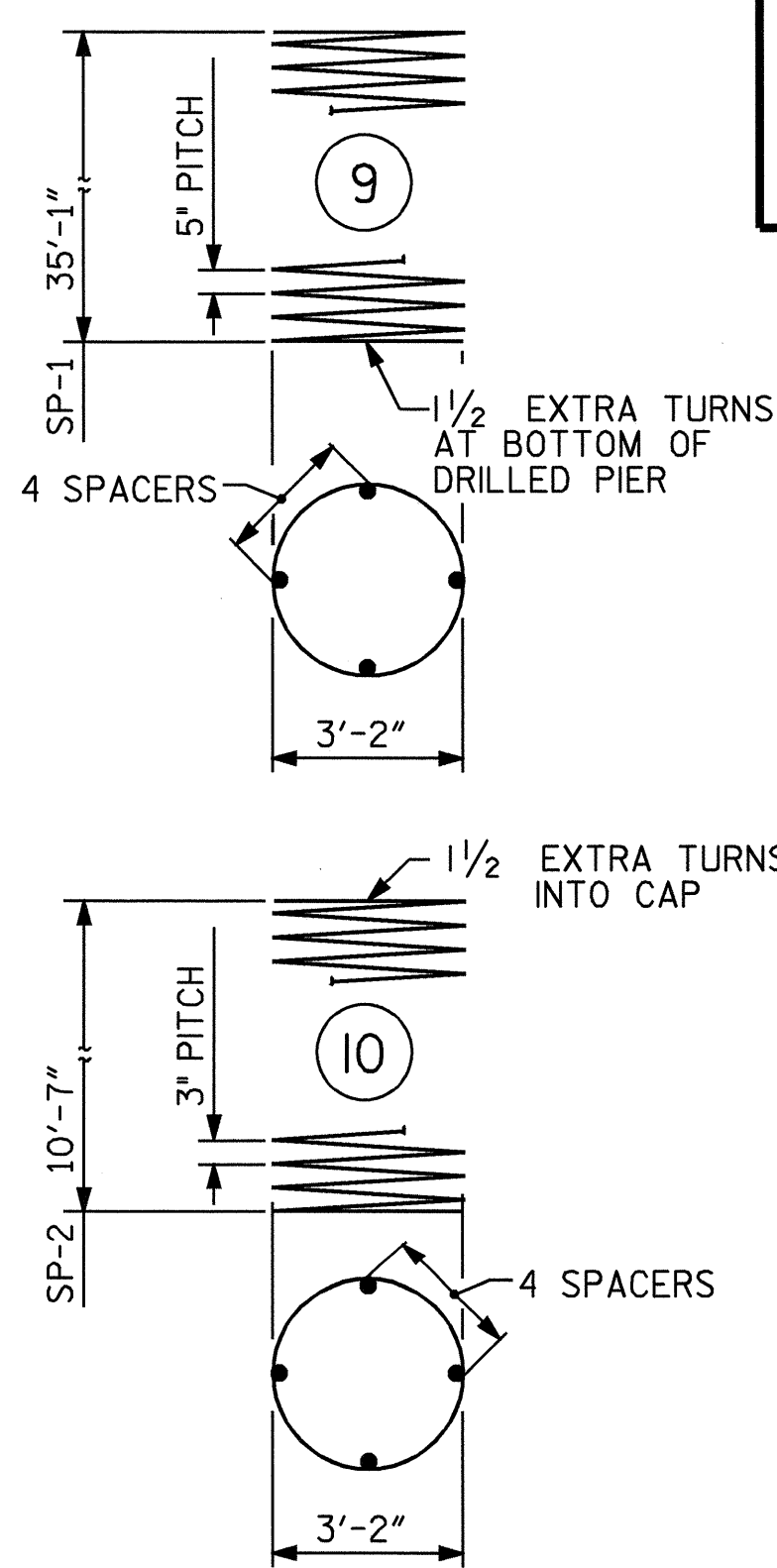
DRILLED PIER CONCRETE (POUR #1)	66.2 CU. YD.
4'-0" Ø DRILLED PIER IN SOIL	112.00 FT.
4'-0" Ø DRILLED PIER NOT IN SOIL	30.00 FT.
CSL TUBES	610.00 FT.
SPT TESTING	4 EACH
SID INSPECTION	4 EACH
CROSSHOLE SONIC LOGGING	2 EACH
PERMANENT STEEL CASING FOR 4'-0" DIA. DRILLED PIERS	34.1 FT.

BAR NO.	SIZE	TYPE	LENGTH	WEIGHT	
SP-1	4	**	9	839'-10"	3,504
SP-2	4	***	10	432'-2"	1,155

TOTAL SPIRAL REINFORCING STEEL (LBS)		4,659
CLASS "A" CONCRETE		
POUR #2	19.2 CU. YD.	
POUR #3	87.8 CU. YD.	
POUR #4	35.6 CU. YD.	
TOTAL CLASS "A" CONCRETE		142.6 CU. YD.
TOTAL HP 12 X 53 PILES NO. 2		80

GALVANIZED REINFORCING STRAPS	1200 LIN. FT.
#57 STONE BACKFILL FOR GALVANIZED REINFORCING STRAPS	625 CU. YD.

\*\* THE SP-1 SPIRAL REINFORCING STEEL SHALL BE W31 OR D-31 COLD DRAWN WIRE OR #5 PLAIN OR DEFORMED BAR.  
 \*\*\* THE SP-2 SPIRAL REINFORCING STEEL SHALL BE W20 OR D-20 COLD DRAWN WIRE OR #4 PLAIN OR DEFORMED BAR.



PROJECT NO. R-2911D  
 ROWAN COUNTY  
 STATION: 231+17.87 -L-  
 14+25.15 -Y8-  
 SHEET 4 OF 5

STATE OF NORTH CAROLINA  
 DEPARTMENT OF TRANSPORTATION  
 RALEIGH  
 SUBSTRUCTURE  
 END BENT #2  
 RIGHT LANE

REVISIONS						SHEET NO.
NO.	BY:	DATE:	NO.	BY:	DATE:	S-49
1			3			TOTAL SHEETS 120
2			4			

DRAWN BY: R. L. CHESSON DATE: 2004 AUG  
 CHECKED BY: S. H. SOCKWELL DATE: 9/04



ALL BAR DIMENSIONS ARE OUT TO OUT.