

NOTES

FOR ELASTOMERIC BEARINGS, SEE SPECIAL PROVISIONS.

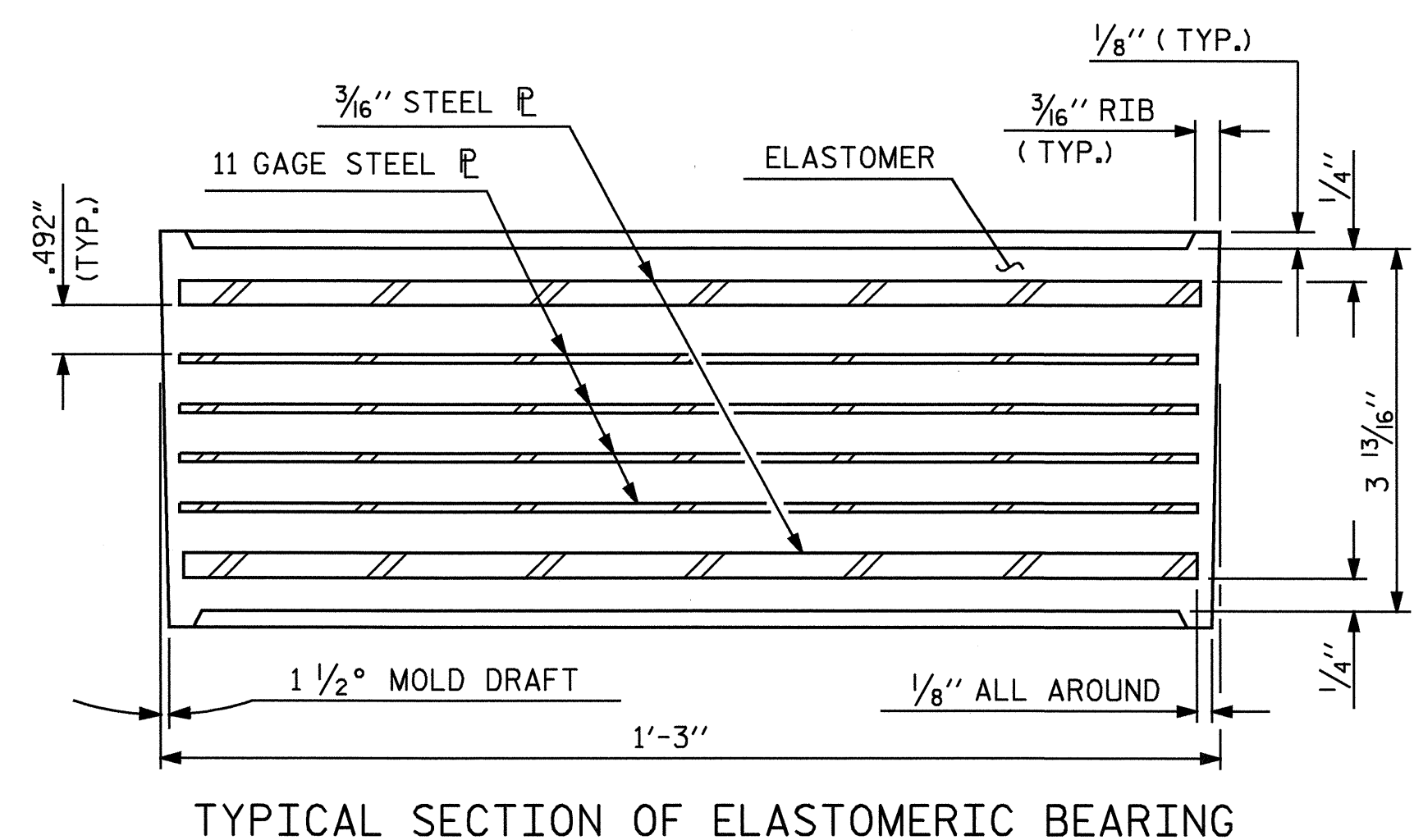
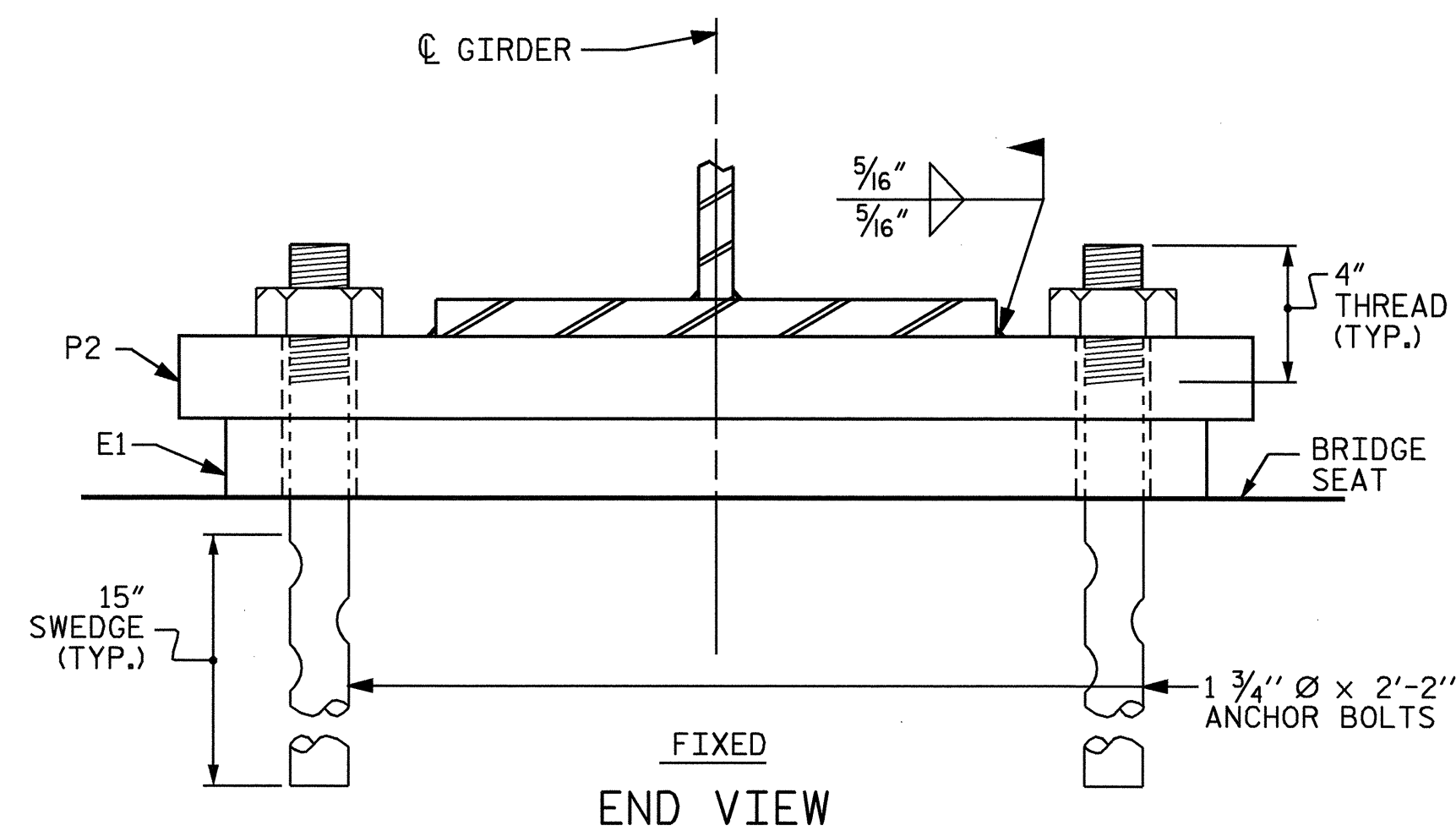
AT ALL FIXED POINTS OF SUPPORT AT BENT 1 AND BENT 2, NUTS FOR ANCHOR BOLTS ARE TO BE TIGHTENED FINGER TIGHT AND THEN BACKED OFF 1/2 TURN. THE THREAD OF THE NUT AND BOLT SHALL THEN BE BURRED WITH A SHARP POINTED TOOL.

FOR AASHTO M270 GRADE 50W STRUCTURAL STEEL, SOLE PLATE SHALL BE AASHTO M270 GRADE 50W AND SHALL NOT BE GALVANIZED. ANCHOR BOLTS, NUTS AND WASHERS SHALL BE GALVANIZED IN ACCORDANCE WITH THE STANDARD SPECIFICATIONS.

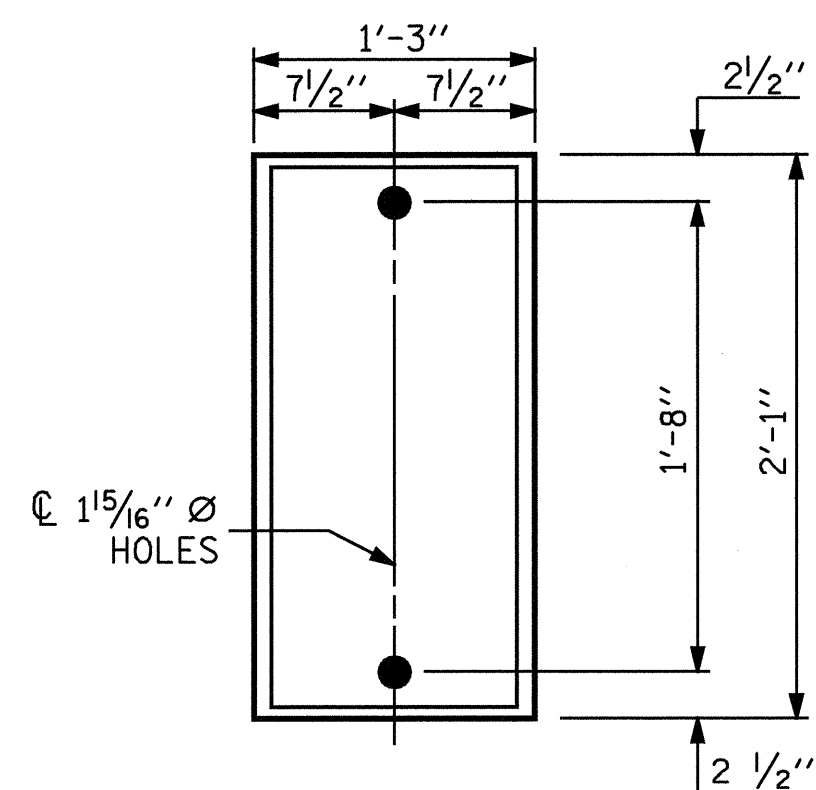
ANCHOR BOLTS SHALL MEET THE REQUIREMENTS OF ASTM A449. NUTS SHALL MEET THE REQUIREMENTS OF AASHTO M291-DH OR AASHTO M292-2H. WASHERS SHALL MEET THE REQUIREMENTS OF AASHTO M293. SHOP DRAWINGS ARE NOT REQUIRED FOR ANCHOR BOLTS, NUTS AND WASHERS. SHOP INSPECTION IS REQUIRED.

WHEN FIELD WELDING THE SOLE PLATE TO THE GIRDER FLANGE, USE TEMPERATURE INDICATING WAX PENS, OR OTHER SUITABLE MEANS, TO ENSURE THAT THE TEMPERATURE OF THE SOLE PLATE DOES NOT EXCEED 300°F. TEMPERATURES ABOVE THIS MAY DAMAGE THE ELASTOMER.

ALL SURFACES OF BEARING PLATES SHALL BE SMOOTH AND STRAIGHT.

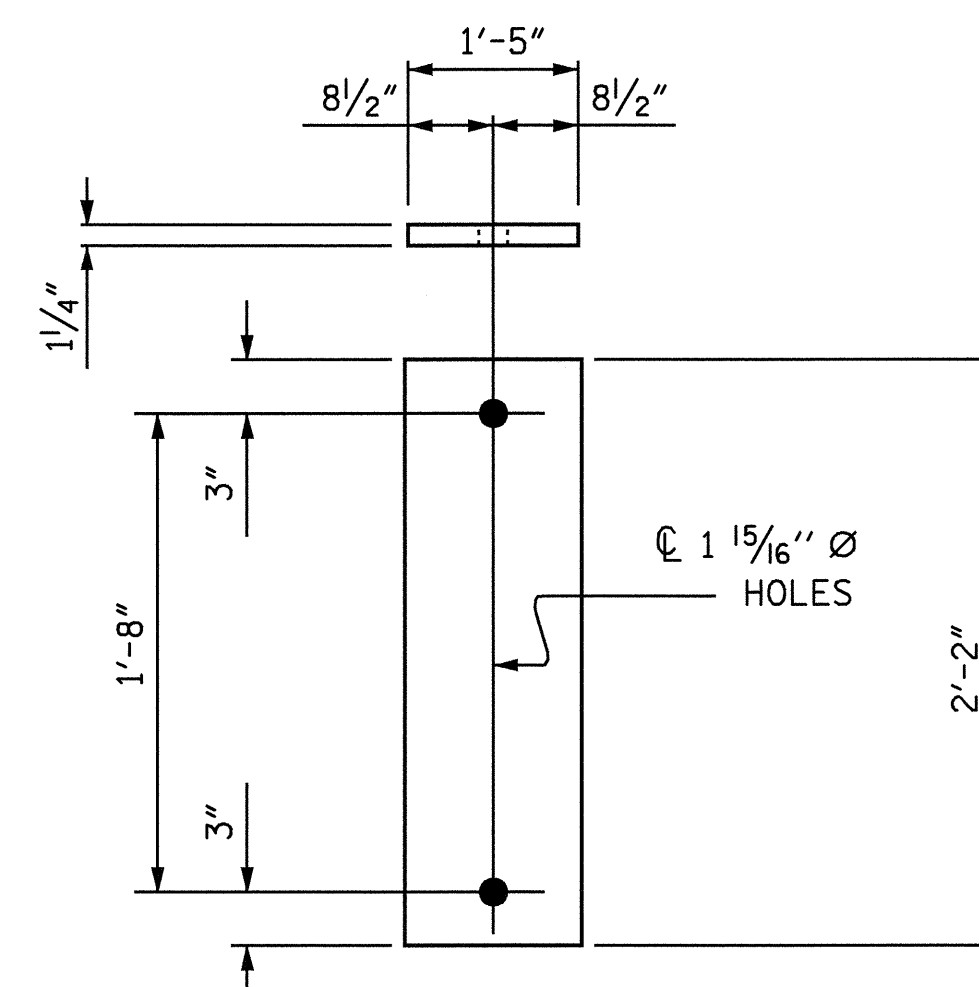


TYPICAL SECTION OF ELASTOMERIC BEARING



PLAN VIEW OF ELASTOMERIC BEARING
E1 (10 REQ'D)

TYPE VI



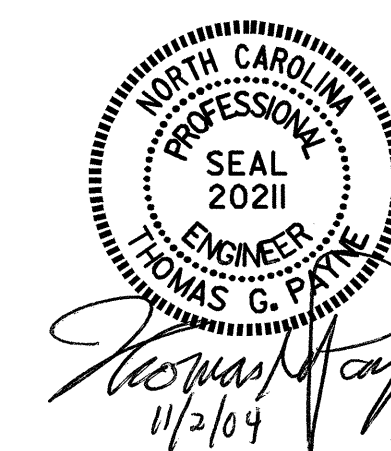
P2
(FIXED)
P2 (10 REQ'D)

SOLE PLATE DETAILS (P2)

-LOAD RATINGS-	
	MAX.D.L.+ L.L.
TYPE VI	262 k

PROJECT NO. R-2911D
ROWAN COUNTY
STATION: 304+22.00-L-

STATE OF NORTH CAROLINA
DEPARTMENT OF TRANSPORTATION
RALEIGH
ELASTOMERIC BEARING
DETAILS
(LEFT LANE)



DRAWN BY : S.H. SOCKWELL DATE : 4/04
CHECKED BY : K.D. LAYNE DATE : 5/04

REVISIONS						SHEET NO.
NO.	BY:	DATE:	NO.	BY:	DATE:	5-67
1			3			TOTAL SHEETS
2			4			120