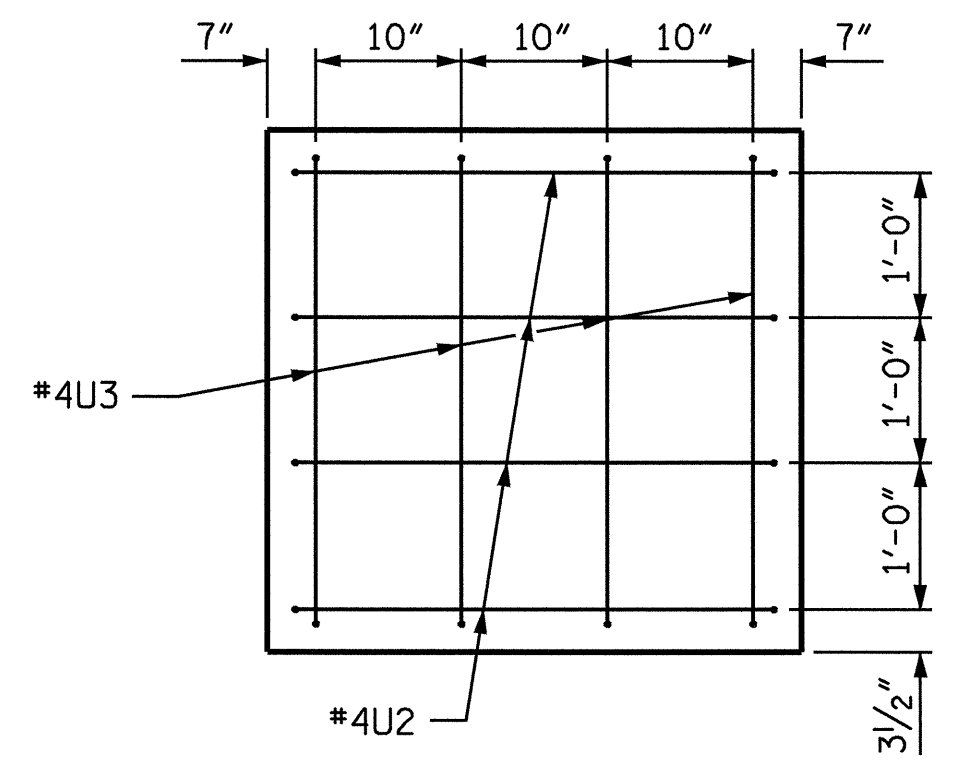
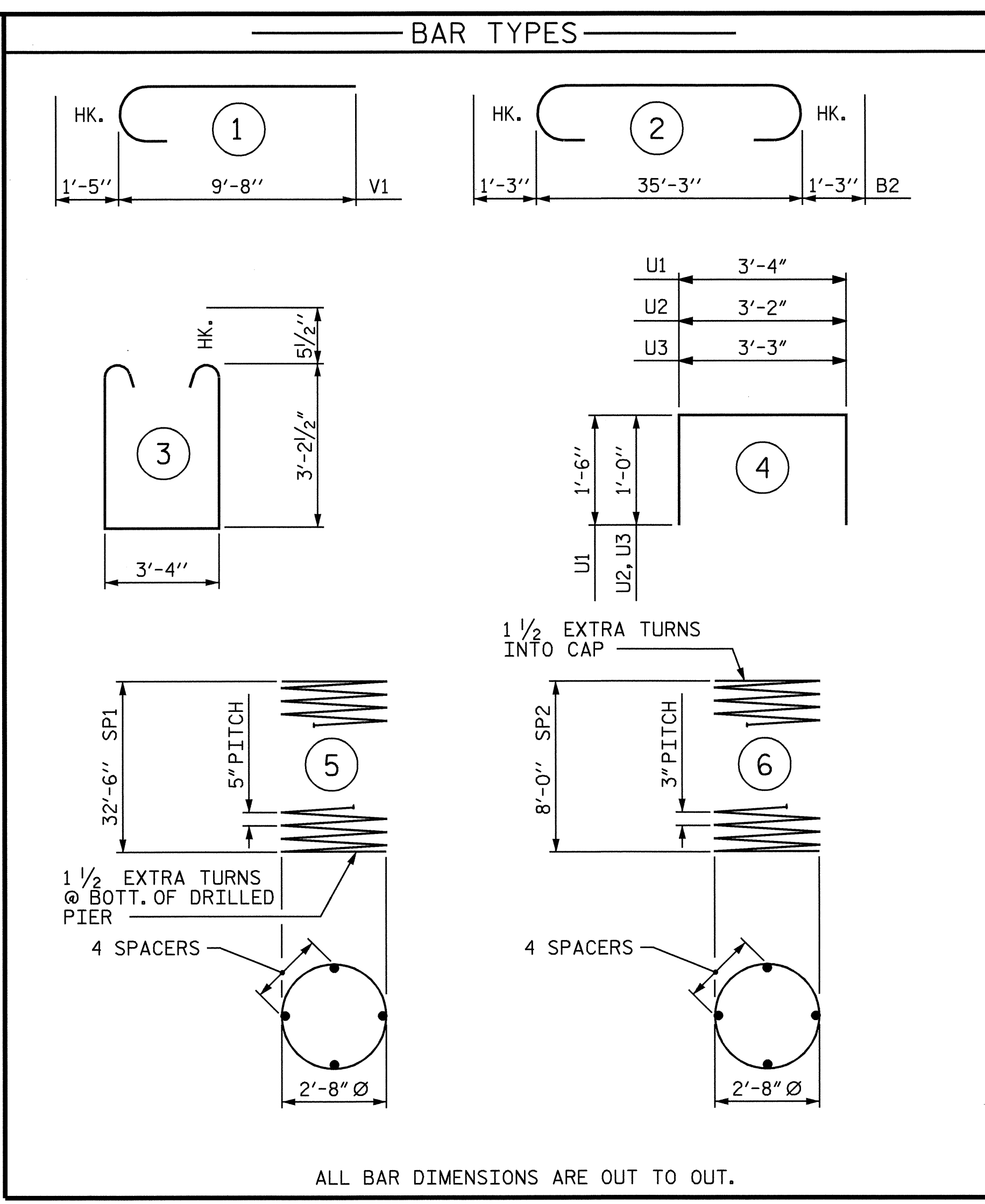


SECTION THRU CAP



END VIEW
(TYPICAL BOTH ENDS)



BILL OF MATERIAL

BENT 1					
BAR	NO.	SIZE	TYPE	LENGTH	WEIGHT
B1	5	#9	STR	35'- 4"	601
B2	5	#9	2	37'- 9"	642
B3	4	#5	STR	35'- 4"	147
B4	5	#4	STR	2'- 4"	8
M1	36	#10	STR	41'- 7"	6442
S1	48	#5	3	10'- 8"	534
U1	29	#4	4	6'- 4"	123
U2	8	#4	4	5'- 2"	28
U3	8	#4	4	5'- 3"	28
V1	36	#10	1	11'- 1"	1717
REINFORCING STEEL				LBS.	10270

SP1	3	**	5	653'-11"	2046
SP2	3	***	6	276'- 5"	554
SPIRAL COLUMN REINF. STEEL				LBS.	2600

CLASS A CONCRETE BREAKDOWN

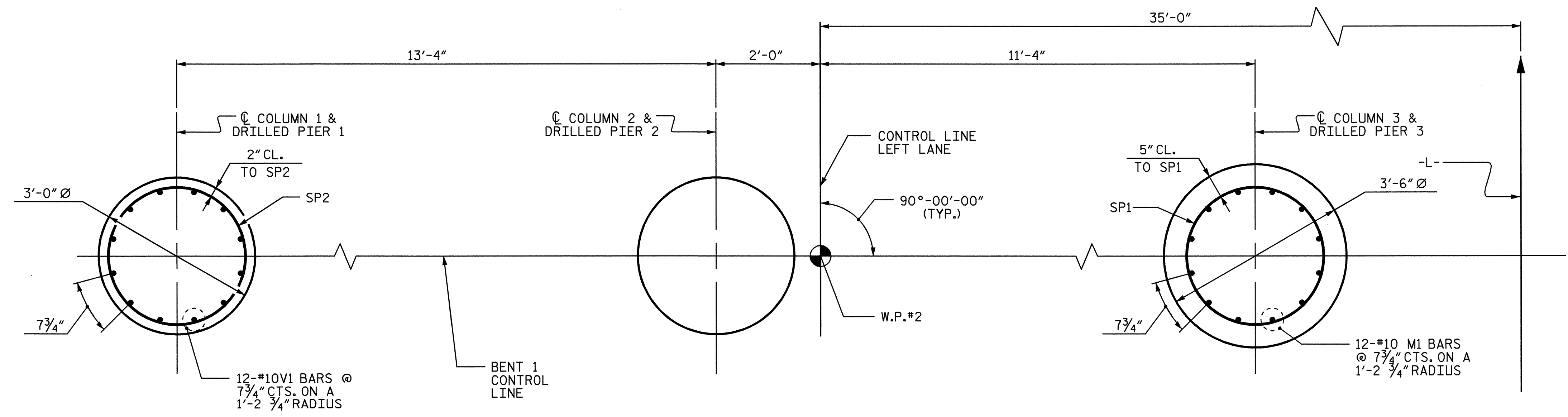
POUR #2 (COLUMNS)	6.1 C.Y.
POUR #3 (CAP)	18.0 C.Y.
TOTAL	24.1 C.Y.

DRILLED PIER CONCRETE BREAKDOWN

POUR #1 (DRILLED PIERS)	35.3 C.Y.
3'-6" Ø DRILLED PIERS NOT IN SOIL	28.0 LIN. FT.
3'-6" Ø DRILLED PIERS IN SOIL	71.0 LIN. FT.

SPT TESTING	3 EACH
SID INSPECTIONS	3 EACH
CROSSHOLE SONIC LOGGING	1 EACH
CSL TUBES	426.0 LIN. FT.

** THE SP1 SPIRAL REINFORCING STEEL SHALL BE W31 OR D-31 COLD DRAWN WIRE OR #5 PLAIN OR DEFORMED BAR.
*** THE SP2 SPIRAL REINFORCING STEEL SHALL BE W20 OR D-20 COLD DRAWN WIRE OR #4 PLAIN OR DEFORMED BAR.



PLAN OF COLUMN
REINFORCING STEEL AND DIMENSIONS ARE TYPICAL FOR ALL COLUMNS.

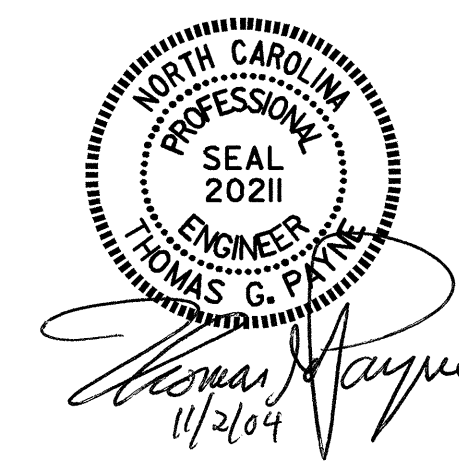
PLAN OF DRILLED PIER
REINFORCING STEEL AND DIMENSIONS ARE TYPICAL FOR ALL DRILLED PIERS.

PLAN OF COLUMNS AND DRILLED PIERS

PROJECT NO. R-2911D
ROWAN COUNTY
STATION: 304+22.00 -L-
SHEET 2 OF 2

STATE OF NORTH CAROLINA
DEPARTMENT OF TRANSPORTATION
RALEIGH

SUBSTRUCTURE
BENT 1
(LEFT LANE)



DRAWN BY: H. A. LOCKLEAR DATE: 4/06/04
CHECKED BY: J. P. ADAMS DATE: 7/21/04

REVISIONS						SHEET NO.	
NO.	BY:	DATE:	NO.	BY:	DATE:	S-77	
1			3			TOTAL SHEETS	
2			4			120	