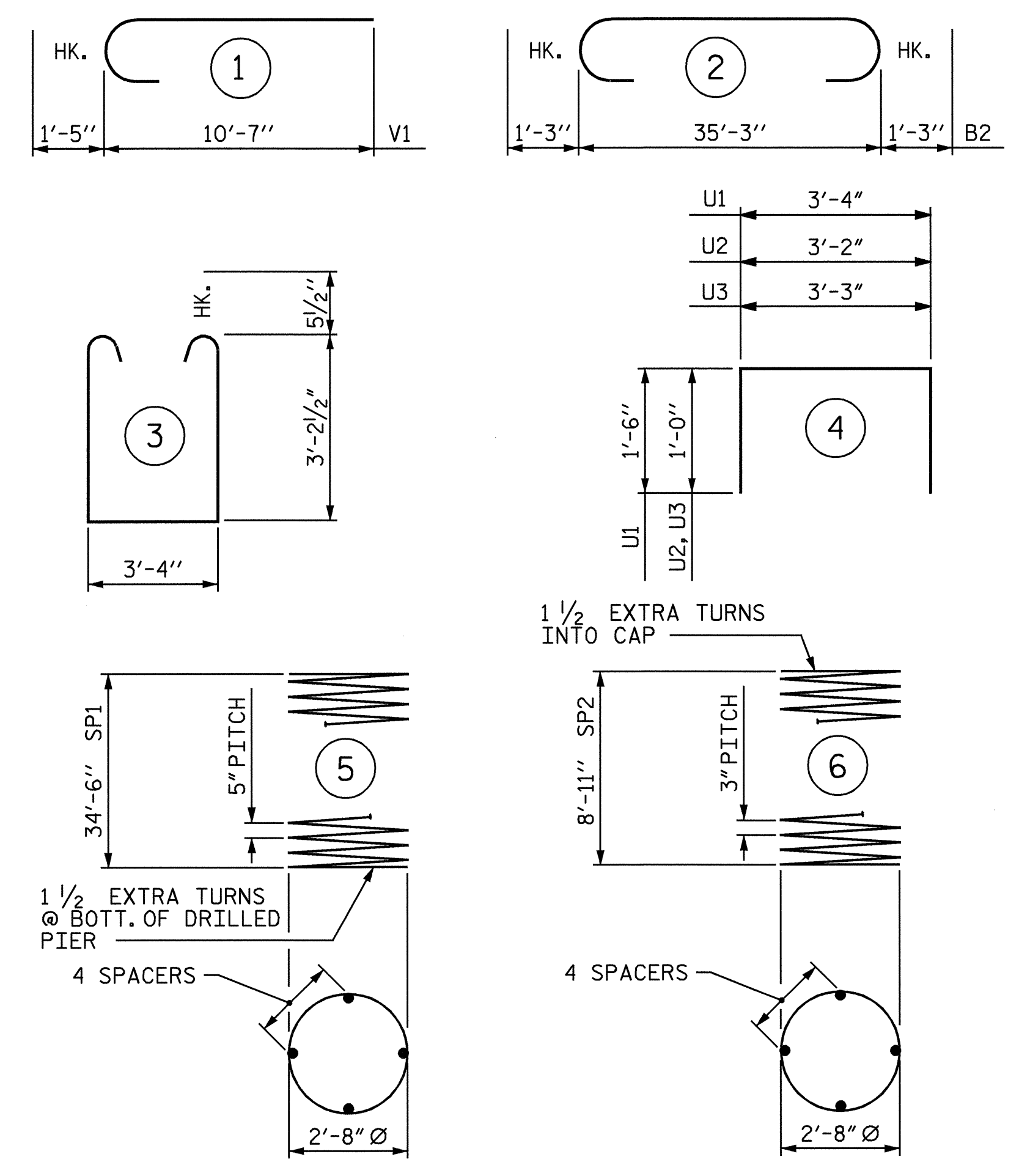


BAR TYPES



BILL OF MATERIAL

BENT 2						
BAR NO.	SIZE	TYPE	LENGTH	WEIGHT		
B1	5	#9	STR	35'-4"	601	
B2	5	#9	2	37'-9"	642	
B3	4	#5	STR	35'-4"	147	
B4	5	#4	STR	2'-4"	8	
M1	36	#10	STR	43'-7"	6751	
S1	48	#5	3	10'-8"	534	
U1	29	#4	4	6'-4"	123	
U2	8	#4	4	5'-2"	28	
U3	8	#4	4	5'-3"	28	
V1	36	#10	1	12'-0"	1859	
REINFORCING STEEL				LBS.	10721	

SP1	3	**	5	695'-0"	2175	
SP2	3	***	6	307'-4"	616	
SPIRAL COLUMN REINF. STEEL				LBS.	2791	

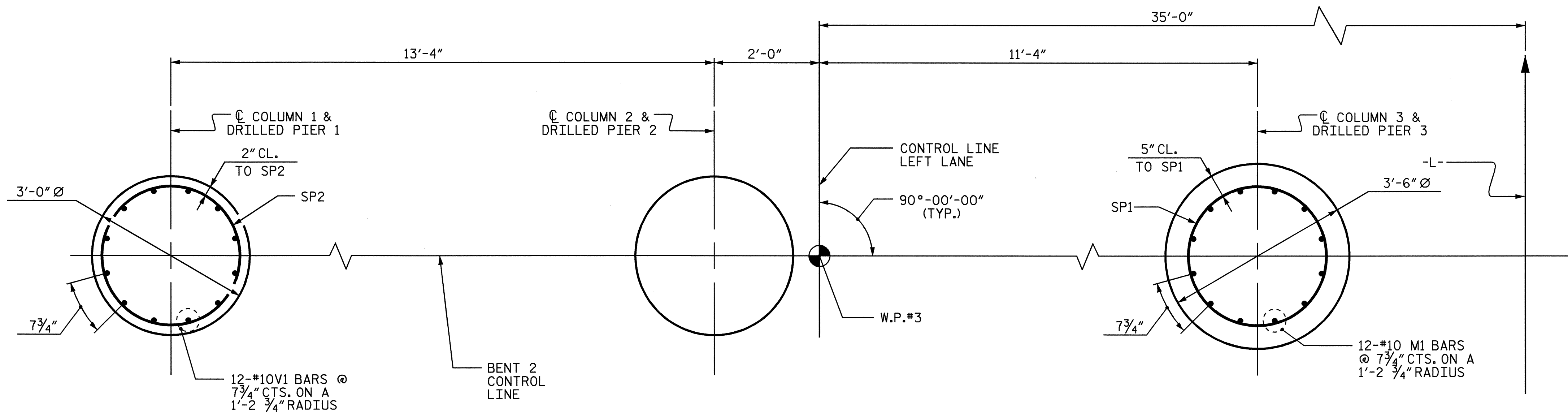
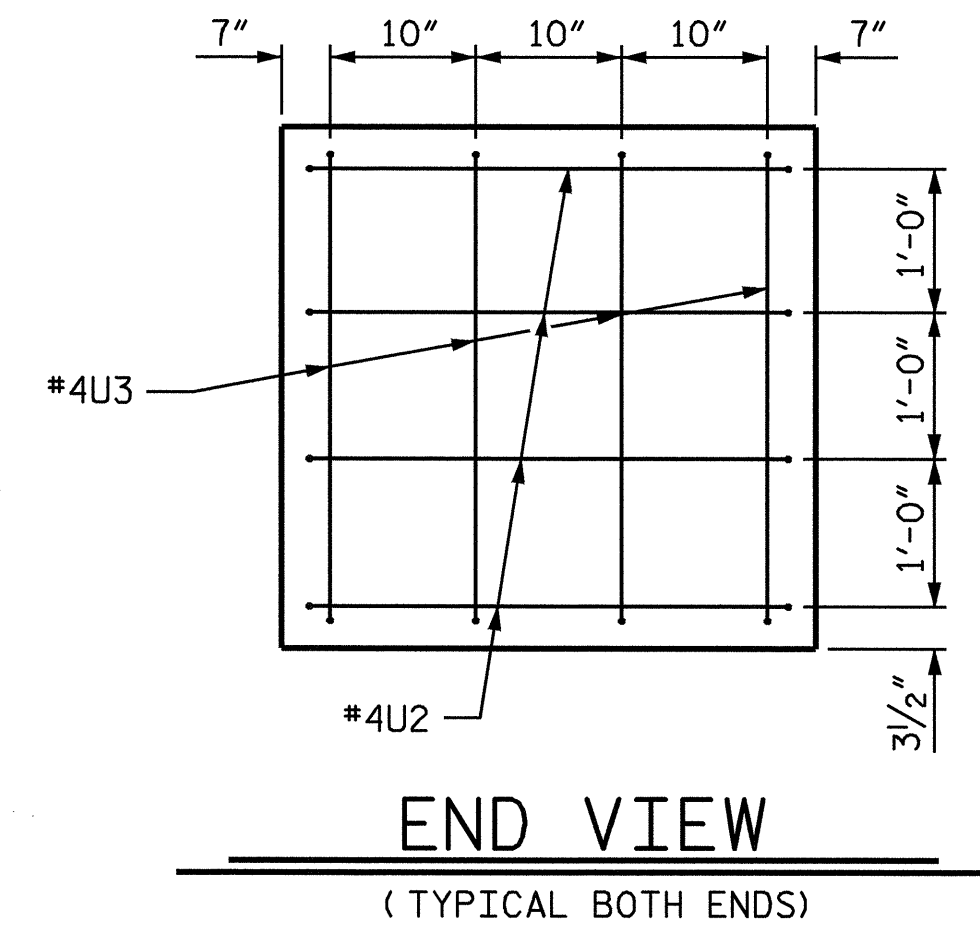
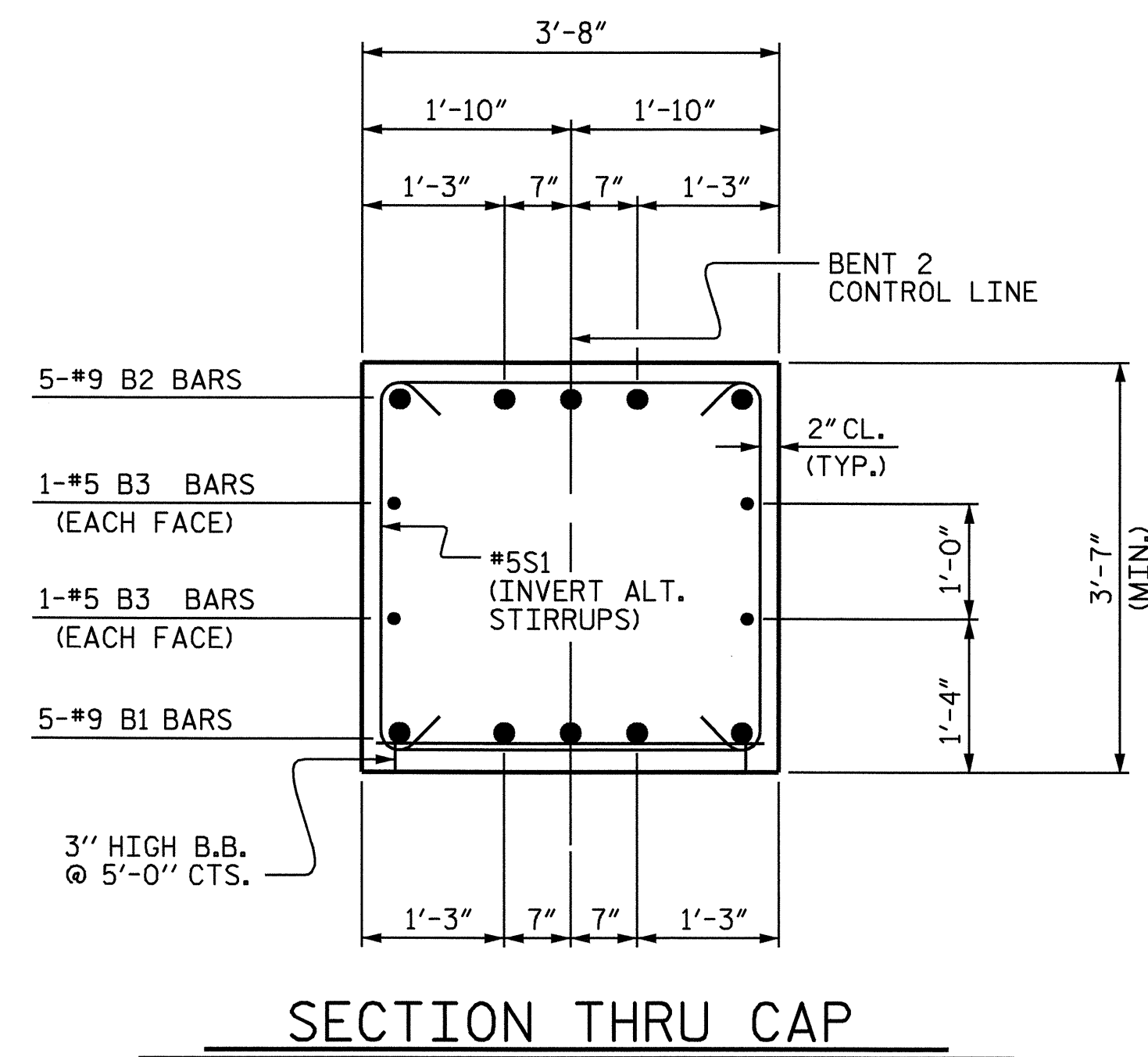
CLASS A CONCRETE BREAKDOWN		
POUR #2 (COLUMNS)		6.8 C.Y.
POUR #3 (CAP)		18.0 C.Y.
TOTAL		24.8 C.Y.

DRILLED PIER CONCRETE BREAKDOWN		
POUR #1 (DRILLED PIERS)		37.4 C.Y.

3'-6" Ø DRILLED PIERS NOT IN SOIL	22.0 LIN. FT.
3'-6" Ø DRILLED PIERS IN SOIL	83.0 LIN. FT.

SID INSPECTIONS	3 EACH
CROSSHOLE SONIC LOGGING	1 EACH
CSL TUBES	450.0 LIN. FT.

** THE SP1 SPIRAL REINFORCING STEEL SHALL BE W31 OR D-31 COLD DRAWN WIRE OR #5 PLAIN OR DEFORMED BAR.
*** THE SP2 SPIRAL REINFORCING STEEL SHALL BE W20 OR D-20 COLD DRAWN WIRE OR #4 PLAIN OR DEFORMED BAR.



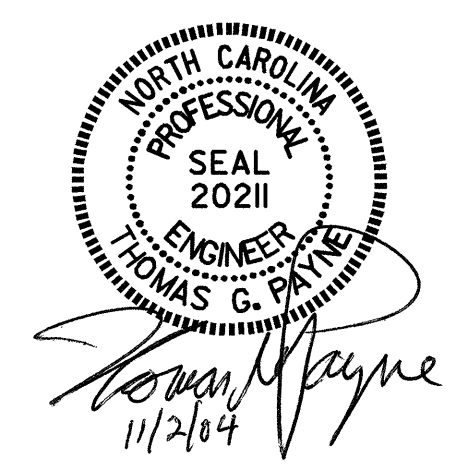
PLAN OF COLUMN
REINFORCING STEEL AND DIMENSIONS ARE TYPICAL FOR ALL COLUMNS.

PLAN OF DRILLED PIER
REINFORCING STEEL AND DIMENSIONS ARE TYPICAL FOR ALL DRILLED PIERS.

PLAN OF COLUMNS AND DRILLED PIERS

PROJECT NO. R-2911D
ROWAN COUNTY
STATION: 304+22.00 -L-
SHEET 2 OF 2

STATE OF NORTH CAROLINA
DEPARTMENT OF TRANSPORTATION
RALEIGH
SUBSTRUCTURE
BENT 2
(LEFT LANE)



REVISIONS					SHEET NO.
NO.	BY:	DATE:	NO.	DATE:	S-79
1			3		TOTAL SHEETS 120
2			4		

DRAWN BY: H. A. LOCKLEAR DATE: 4/06/04
CHECKED BY: J. P. ADAMS DATE: 7/21/04