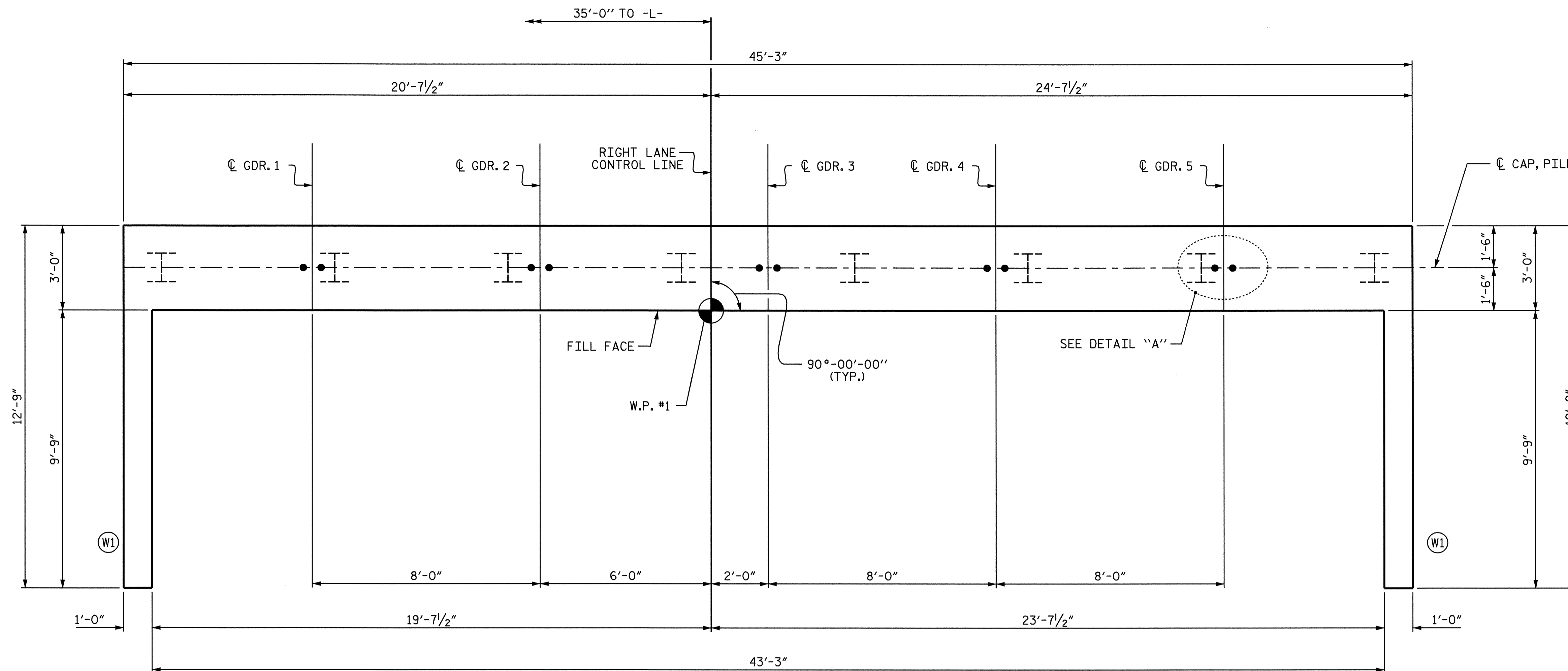
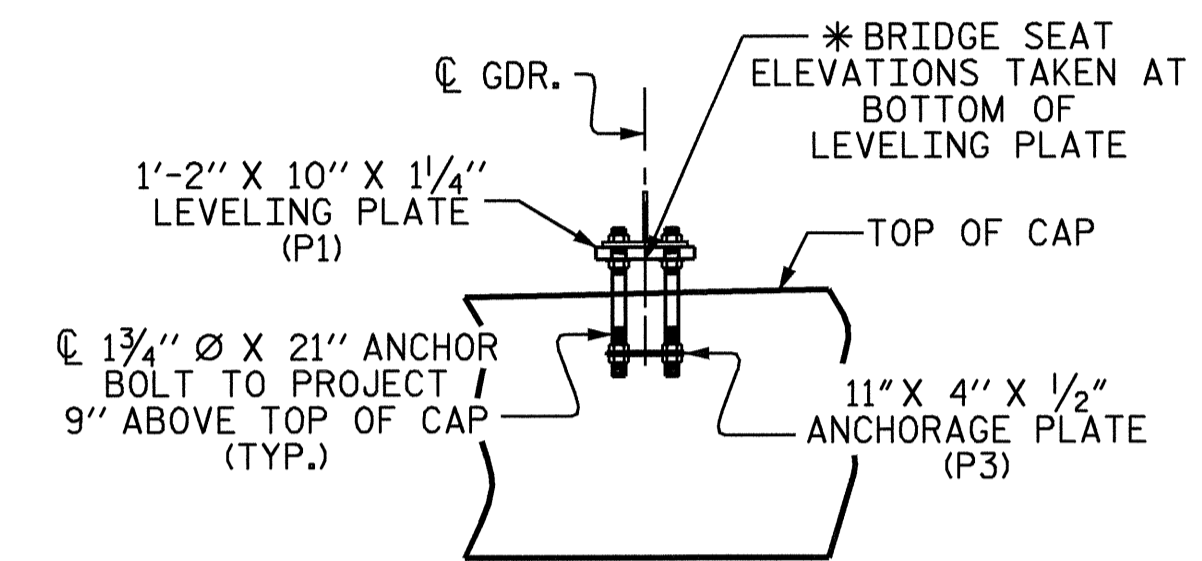


NOTES

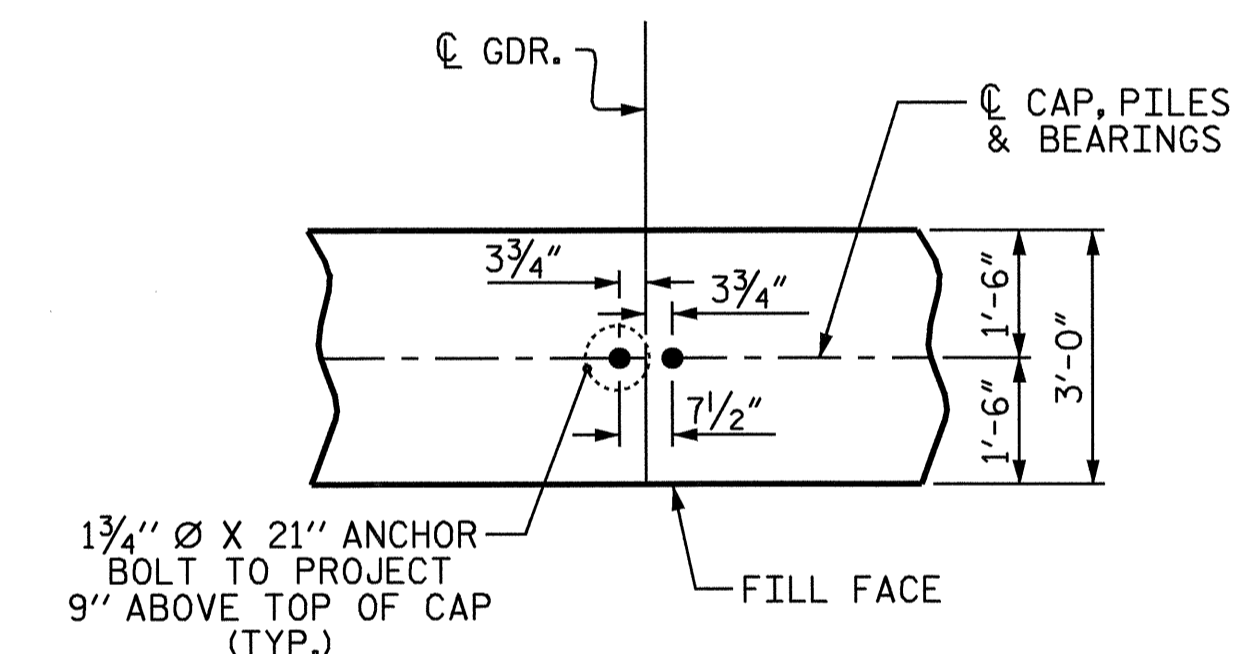
STIRRUPS IN CAP MAY BE SHIFTED AS NECESSARY TO CLEAR ANCHOR BOLTS.
 SEE SUPERSTRUCTURE SHEETS FOR UPPER PART OF INTEGRAL END BENT DETAILS.
 THE CONTRACTOR SHALL PROVIDE FOR INSTALLATION OF THE 4" DIAMETER DRAIN PIPE THROUGH THE WING WALL AS REQUIRED FOR REINFORCED BRIDGE APPROACH FILLS, SEE ROADWAY PLANS. REINFORCING STEEL IN THE WING WALL MAY BE SHIFTED AS NECESSARY TO CLEAR THE DRAIN PILES.



PLAN



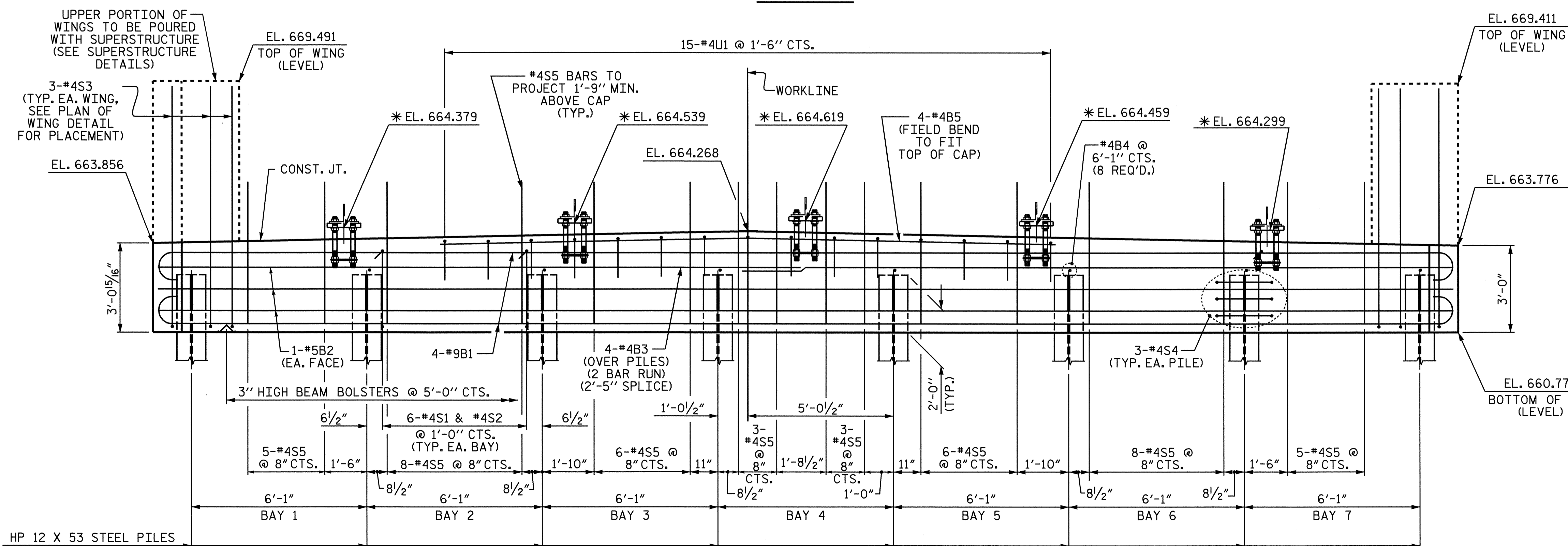
ELEVATION VIEW



PLAN VIEW

DETAIL "A"

FOR LEVELING PLATE DETAILS, SEE "LEVELING PLATE DETAILS" SHEET.



ELEVATION

* ELEVATIONS ARE SHOWN TO BOTTOM OF LEVELING PLATE

PROJECT NO. R-2911D
 ROWAN COUNTY
 STATION: 304+22.00 -L-

SHEET 1 OF 3

STATE OF NORTH CAROLINA
 DEPARTMENT OF TRANSPORTATION
 RALEIGH

SUBSTRUCTURE
 INTEGRAL
 END BENT #1
 RIGHT LANE



DRAWN BY: J.P. ADAMS DATE: 4/19/04
 CHECKED BY: B.C. HUNT DATE: 5/5/04

REVISIONS						SHEET NO.	
NO.	BY:	DATE:	NO.	BY:	DATE:	S-106	
1			3			TOTAL SHEETS	
2			4			120	

STR. #4