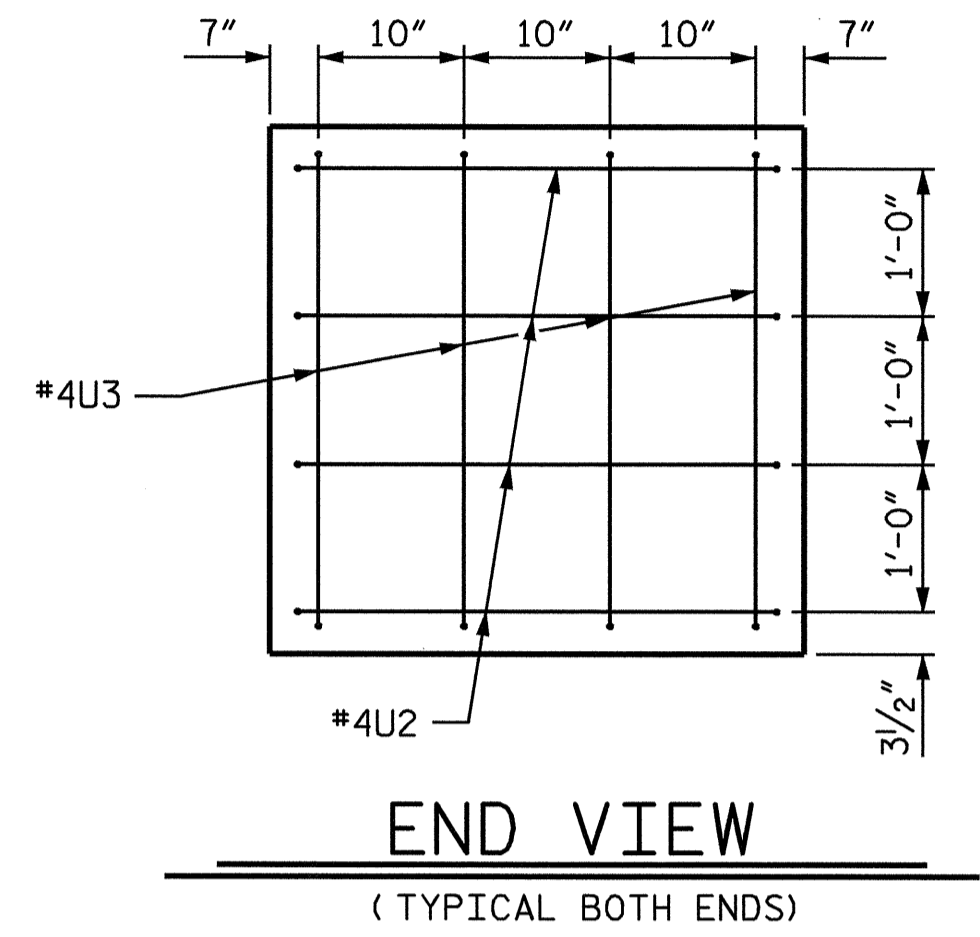
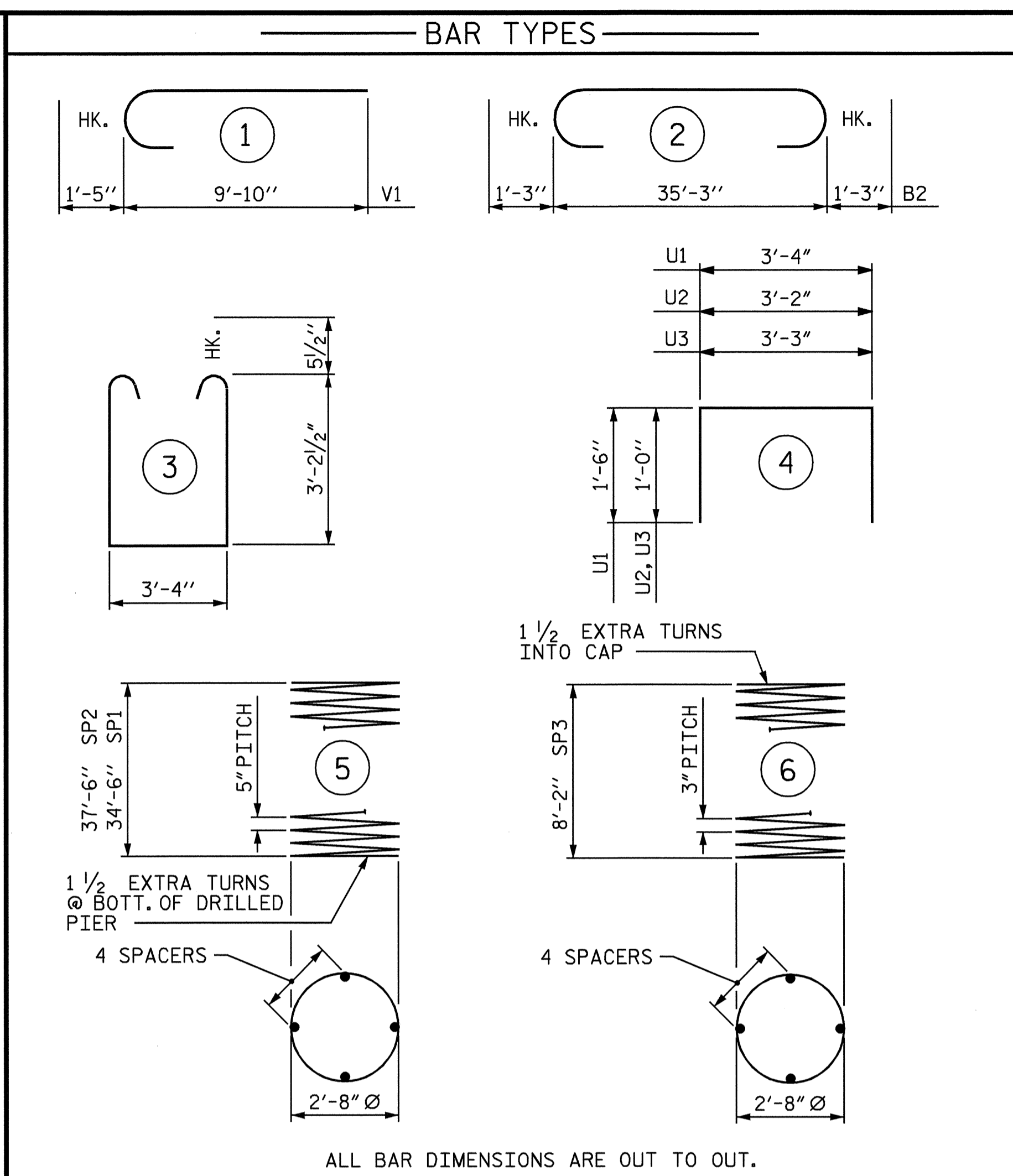


SECTION THRU CAP



END VIEW
(TYPICAL BOTH ENDS)



ALL BAR DIMENSIONS ARE OUT TO OUT.

BILL OF MATERIAL

BENT 1					
BAR NO.	SIZE	TYPE	LENGTH	WEIGHT	
B1	5	#9	STR 35'- 4"	601	
B2	5	#9	2 37'- 9"	642	
B3	4	#5	STR 35'- 4"	147	
B4	5	#4	STR 2'- 4"	8	
M1	24	#10	STR 43'- 7"	4501	
M2	12	#10	STR 46'- 7"	2405	
S1	48	#5	3 10'- 8"	534	
U1	29	#4	4 6'- 4"	123	
U2	8	#4	4 5'- 2"	28	
U3	8	#4	4 5'- 3"	28	
V1	36	#10	1 11'- 3"	1743	
REINFORCING STEEL				LBS.	10760

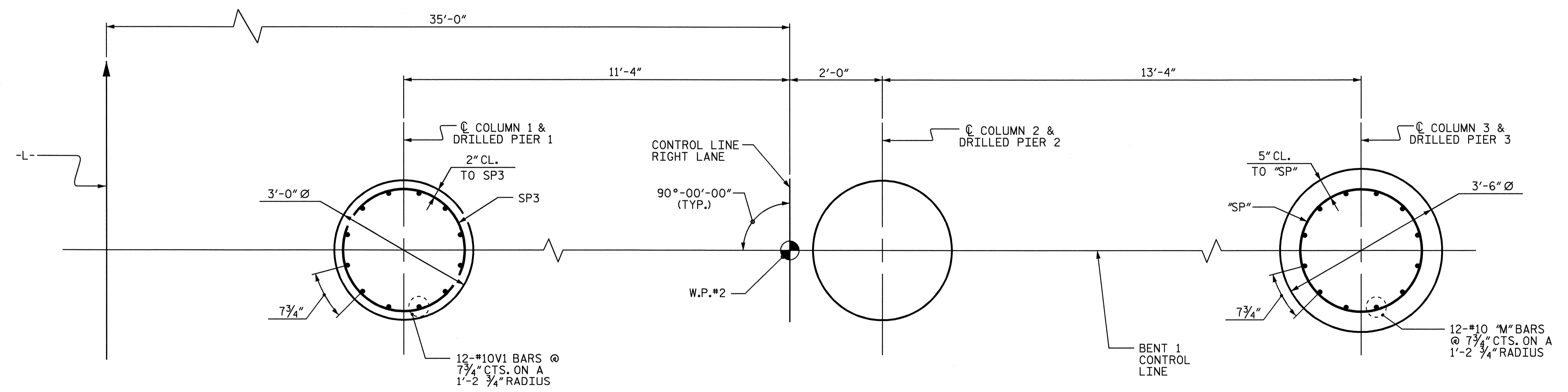
SP1	2	***	5	695'- 0"	1450
SP2	1	***	5	752'- 7"	785
SP3	3	***	6	282'- 7"	566
SPIRAL COLUMN REINF. STEEL				LBS.	2801

CLASS A CONCRETE BREAKDOWN	
POUR #2 (COLUMNS)	6.2 C.Y.
POUR #3 (CAP)	18.0 C.Y.
TOTAL	24.2 C.Y.

DRILLED PIER CONCRETE BREAKDOWN	
POUR #1 (DRILLED PIERS)	38.5 C.Y.
3'-6" Ø DRILLED PIERS NOT IN SOIL	22.0 LIN. FT.
3'-6" Ø DRILLED PIERS IN SOIL	86.0 LIN. FT.

SID INSPECTIONS	3 EACH
CROSSHOLE SONIC LOGGING	1 EACH
CSL TUBES	462.0 LIN. FT.

*** THE SP1 AND SP2 SPIRAL REINFORCING STEEL SHALL BE W31 OR D-31 COLD DRAWN WIRE OR #5 PLAIN OR DEFORMED BAR.
*** THE SP3 SPIRAL REINFORCING STEEL SHALL BE W20 OR D-20 COLD DRAWN WIRE OR #4 PLAIN OR DEFORMED BAR.



PLAN OF COLUMN
REINFORCING STEEL AND DIMENSIONS ARE TYPICAL FOR ALL COLUMNS.

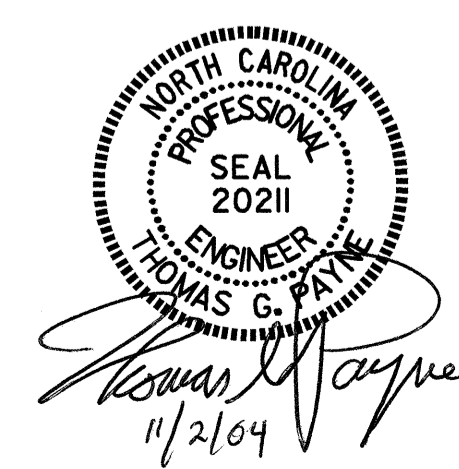
PLAN OF DRILLED PIER
REINFORCING STEEL AND DIMENSIONS ARE TYPICAL FOR ALL DRILLED PIERS EXCEPT AS NOTED.

PLAN OF COLUMNS AND DRILLED PIERS

PROJECT NO. R-2911D
ROWAN COUNTY
STATION: 304+22.00 -L-

SHEET 2 OF 2

STATE OF NORTH CAROLINA
DEPARTMENT OF TRANSPORTATION
RALEIGH
SUBSTRUCTURE
BENT 1
(RIGHT LANE)



REVISIONS					SHEET NO.
NO.	BY:	DATE:	NO.	DATE:	S-110
1			3		TOTAL SHEETS
2			4		120

DRAWN BY: H. A. LOCKLEAR DATE: 4/06/04
CHECKED BY: J. P. ADAMS DATE: 7/23/04