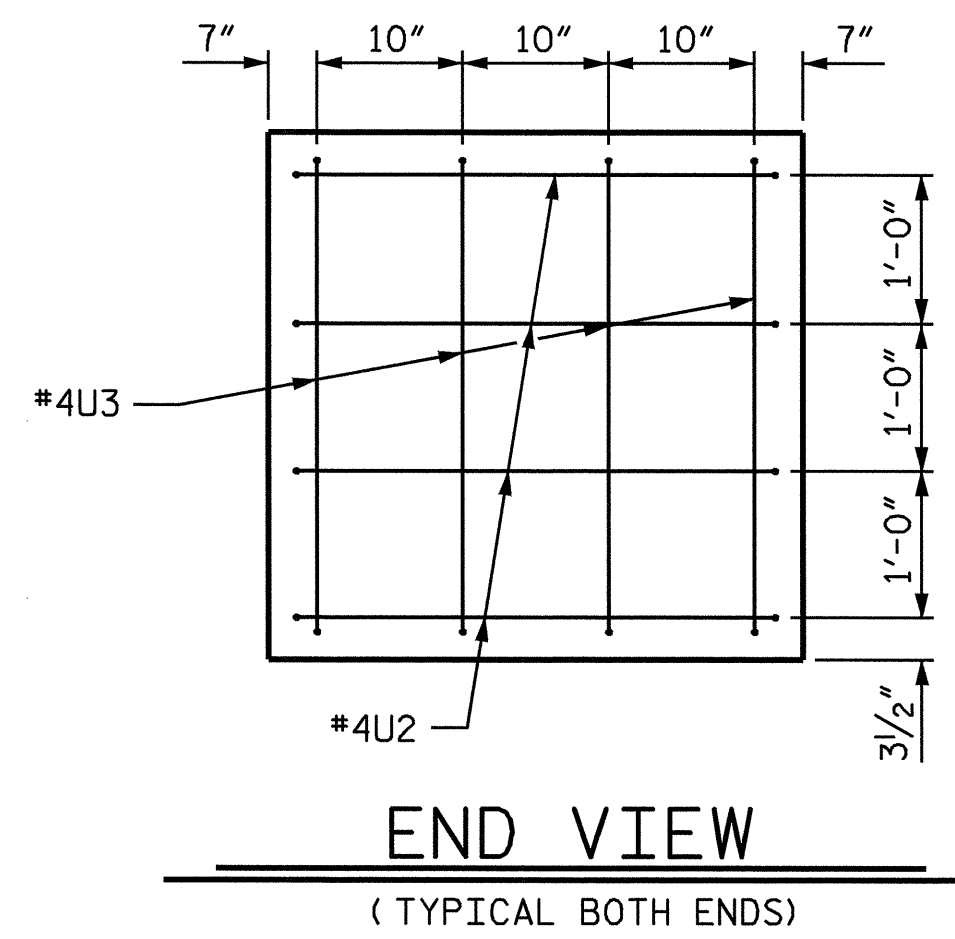
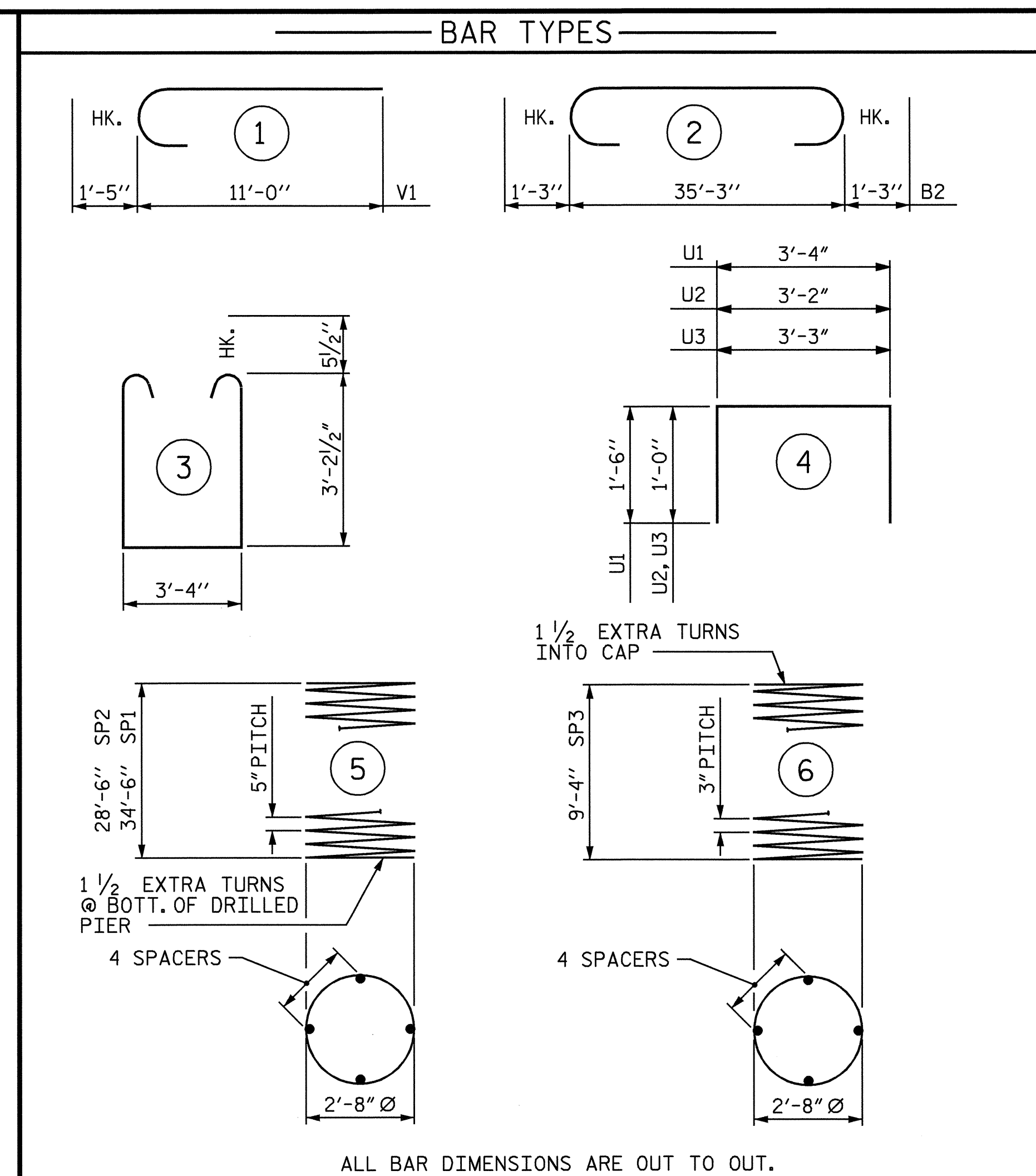


SECTION THRU CAP



END VIEW

(TYPICAL BOTH ENDS)



ALL BAR DIMENSIONS ARE OUT TO OUT.

BILL OF MATERIAL

BENT 2					
BAR NO.	SIZE	TYPE	LENGTH	WEIGHT	
B1	5	#9	STR	35'-4"	601
B2	5	#9	2	37'-9"	642
B3	4	#5	STR	35'-4"	147
B4	5	#4	STR	2'-4"	8
M1	24	#10	STR	43'-7"	4501
M2	12	#10	STR	37'-7"	1941
S1	48	#5	3	10'-8"	534
U1	29	#4	4	6'-4"	123
U2	8	#4	4	5'-2"	28
U3	8	#4	4	5'-3"	28
V1	36	#10	1	12'-5"	1923
REINFORCING STEEL				LBS.	10476
SP1	2	**	5	695'-0"	1450
SP2	1	**	5	575'-9"	601
SP3	3	***	6	321'-10"	645
SPIRAL COLUMN REINF. STEEL				LBS.	2696

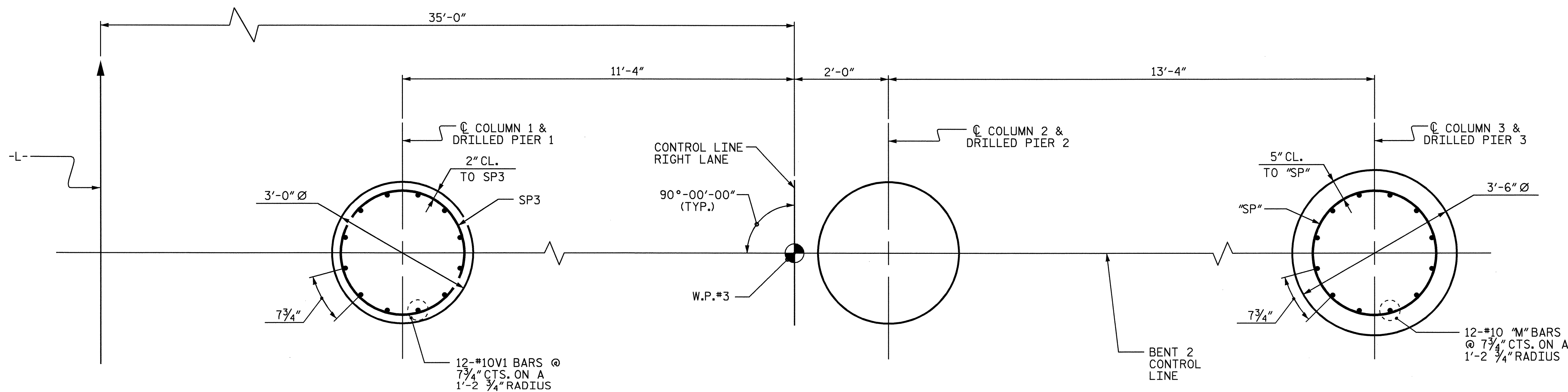
CLASS A CONCRETE BREAKDOWN		
POUR #2 (COLUMNS)		7.1 C.Y.
POUR #3 (CAP)		18.0 C.Y.
TOTAL		25.1 C.Y.

DRILLED PIER CONCRETE BREAKDOWN

POUR #1 (DRILLED PIERS)	35.3 C.Y.
3'-6" Ø DRILLED PIERS NOT IN SOIL	18.0 LIN. FT.
3'-6" Ø DRILLED PIERS IN SOIL	81.0 LIN. FT.

SID INSPECTIONS	3 EACH
CROSSHOLE SONIC LOGGING	1 EACH
CSL TUBES	426.0 LIN. FT.

\*\* THE SP1 AND SP2 SPIRAL REINFORCING STEEL SHALL BE W31 OR D-31 COLD DRAWN WIRE OR #5 PLAIN OR DEFORMED BAR.  
\*\*\* THE SP3 SPIRAL REINFORCING STEEL SHALL BE W20 OR D-20 COLD DRAWN WIRE OR #4 PLAIN OR DEFORMED BAR.



PLAN OF COLUMN

REINFORCING STEEL AND DIMENSIONS ARE TYPICAL FOR ALL COLUMNS.

PLAN OF DRILLED PIER

REINFORCING STEEL AND DIMENSIONS ARE TYPICAL FOR ALL DRILLED PIERS EXCEPT AS NOTED.

PLAN OF COLUMNS AND DRILLED PIERS

PROJECT NO. R-2911D  
ROWAN COUNTY  
 STATION: 304+22.00 -L-

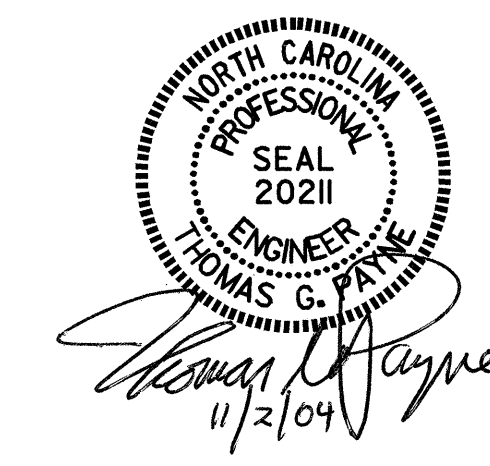
SHEET 2 OF 2

STATE OF NORTH CAROLINA  
 DEPARTMENT OF TRANSPORTATION  
 RALEIGH

SUBSTRUCTURE

BENT 2

(RIGHT LANE)



REVISIONS						SHEET NO.
NO.	BY:	DATE:	NO.	BY:	DATE:	S-112
1			3			TOTAL SHEETS
2			4			120

DRAWN BY: H. A. LOCKLEAR DATE: 4/06/04  
 CHECKED BY: J. P. ADAMS DATE: 7/23/04