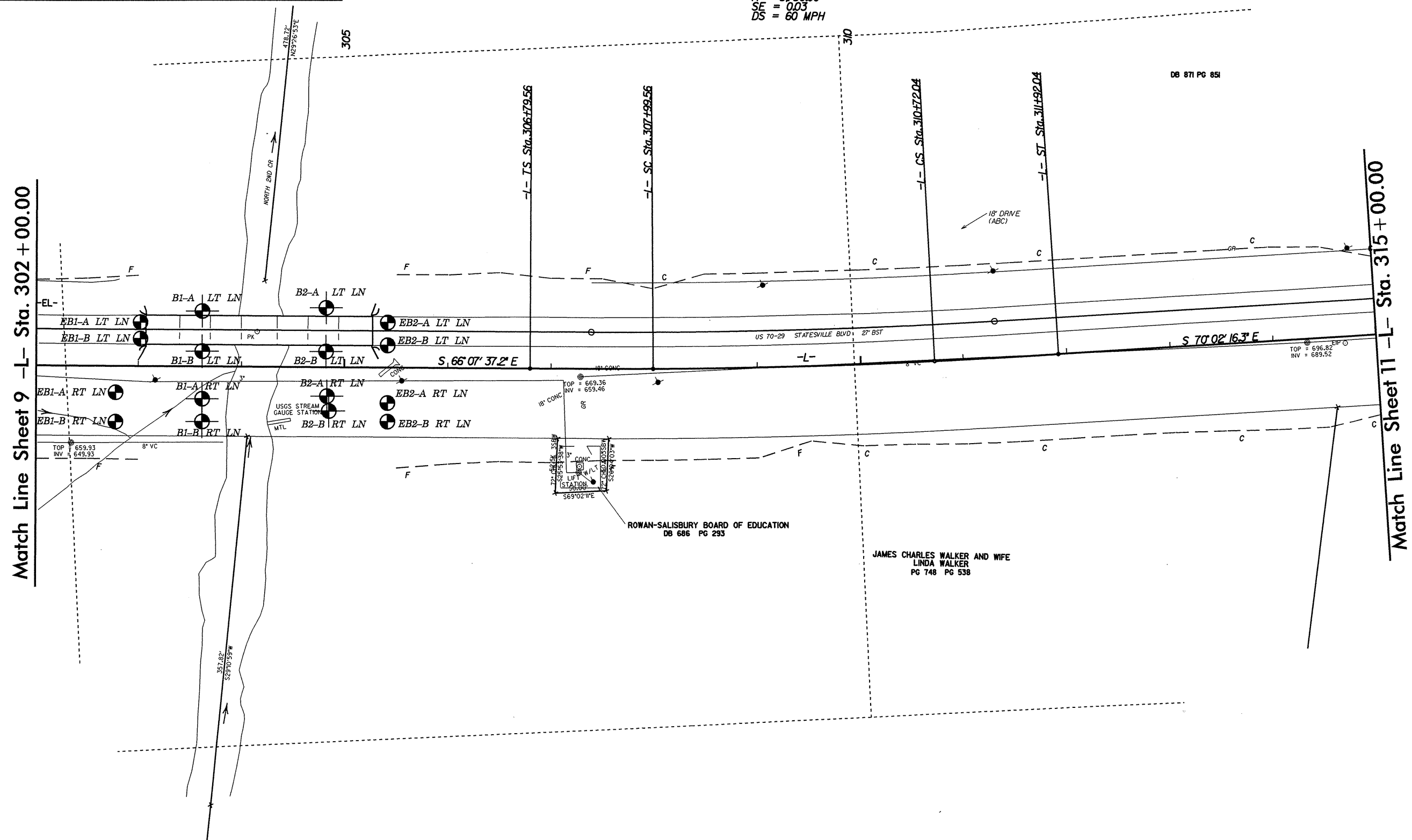
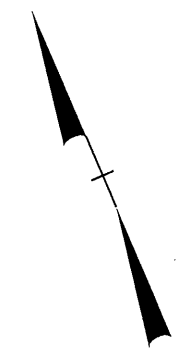


-L-

PIs Sta 307+59.56	PI Sta 309+35.83	PIs Sta 311+12.04
$\Theta_s = 0^\circ 35' 52.3''$	$\Delta = 2^\circ 42' 54.4''$ (LT)	$\Theta_s = 0^\circ 35' 52.3''$
Ls = 120.00'	D = 0' 59' 47.2"	Ls = 120.00'
LT = 80.00'	L = 272.48'	LT = 80.00'
ST = 40.00'	T = 136.26'	ST = 40.00'
	R = 5750.00'	
	SE = 0.03	
	DS = 60 MPH	



REVISIONS

8/17/95

Note: See Sheet 22 for -L- line profile