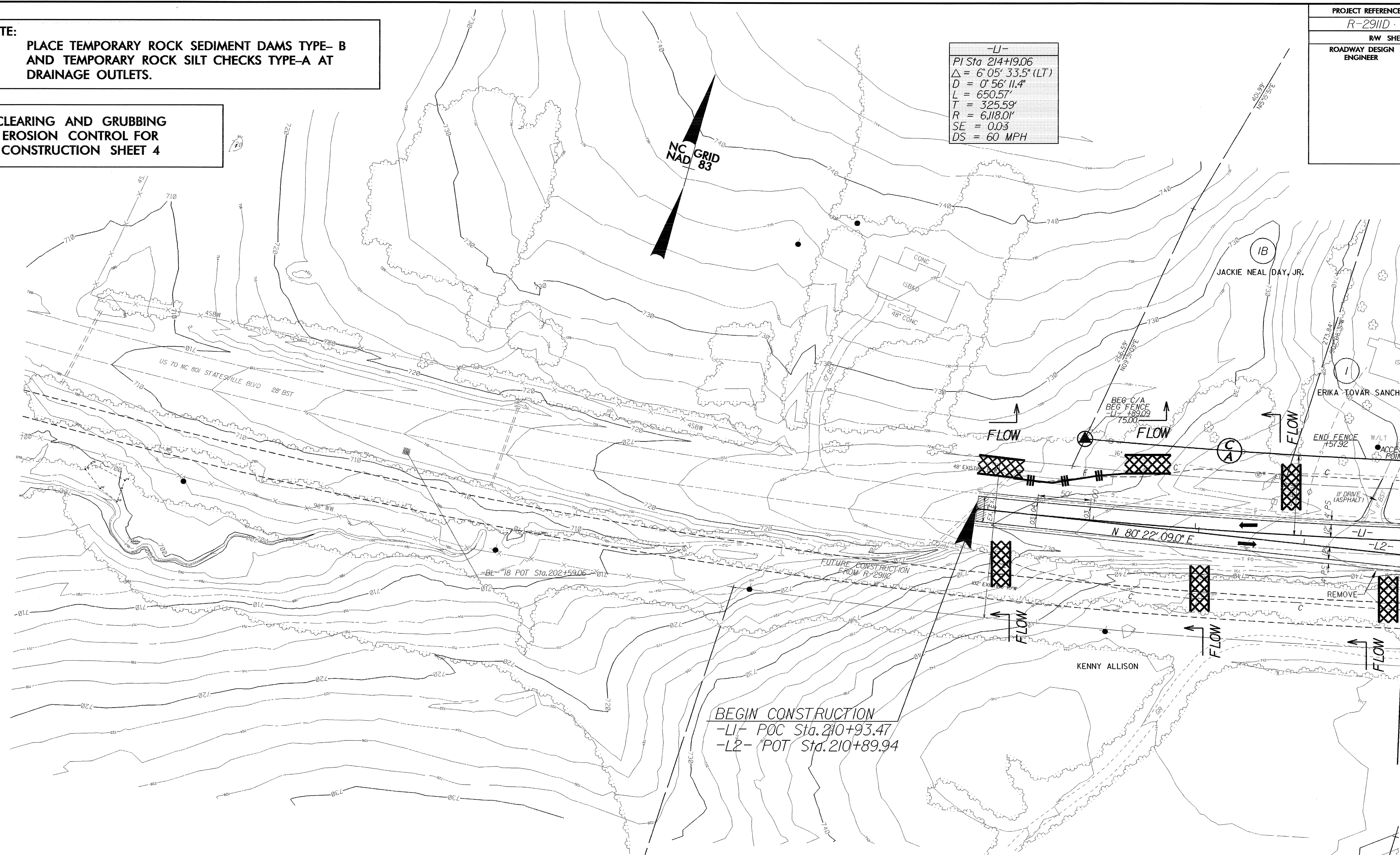


PROJECT REFERENCE NO. R-2911D		SHEET NO. EC-3/CONST.4	
RW SHEET NO.			
ROADWAY DESIGN ENGINEER		HYDRAULICS ENGINEER	

NOTE:
PLACE TEMPORARY ROCK SEDIMENT DAMS TYPE- B
AND TEMPORARY ROCK SILT CHECKS TYPE-A AT
DRAINAGE OUTLETS.

**CLEARING AND GRUBBING
EROSION CONTROL FOR
CONSTRUCTION SHEET 4**

-L1-
PI Sta 214+19.06
 $\Delta = 6^{\circ}05'33.5''$ (LT)
D = 0'56'11.4"
L = 650.57'
T = 325.59'
R = 6,118.01'
SE = 0.03
DS = 60 MPH



Match Line Sheet 5 -L1- Sta. 215+00.00

BEGIN CONSTRUCTION
-L1- POC Sta. 210+93.47
-L2- POT Sta. 210+89.94

DATUM DESCRIPTION
THE LOCALIZED COORDINATE SYSTEM DEVELOPED FOR THIS PROJECT IS BASED ON THE STATE PLANE COORDINATES ESTABLISHED BY NCDOT FOR MONUMENT "384 JAS" WITH NAD 83 STATE PLANE GRID COORDINATES OF NORTHING: 724643.8657(11) EASTING: 1501152.254(11) THE AVERAGE COMBINED GRID FACTOR USED ON THIS PROJECT (GROUND TO GRID) IS: 0.999873400 THE N.C. LAMBERT GRID BEARING AND LOCALIZED HORIZONTAL GROUND DISTANCE FROM "384 JAS" TO -L- STATION 225+00.00 IS S 68° 06' 29.85" E 12,415.260 ft ALL LINEAR DIMENSIONS ARE LOCALIZED HORIZONTAL DISTANCES VERTICAL DATUM USED IS NGVD 29

Note: See Sheet 18 for -L1- line profile
See Sheet 18 for -L2- line profile