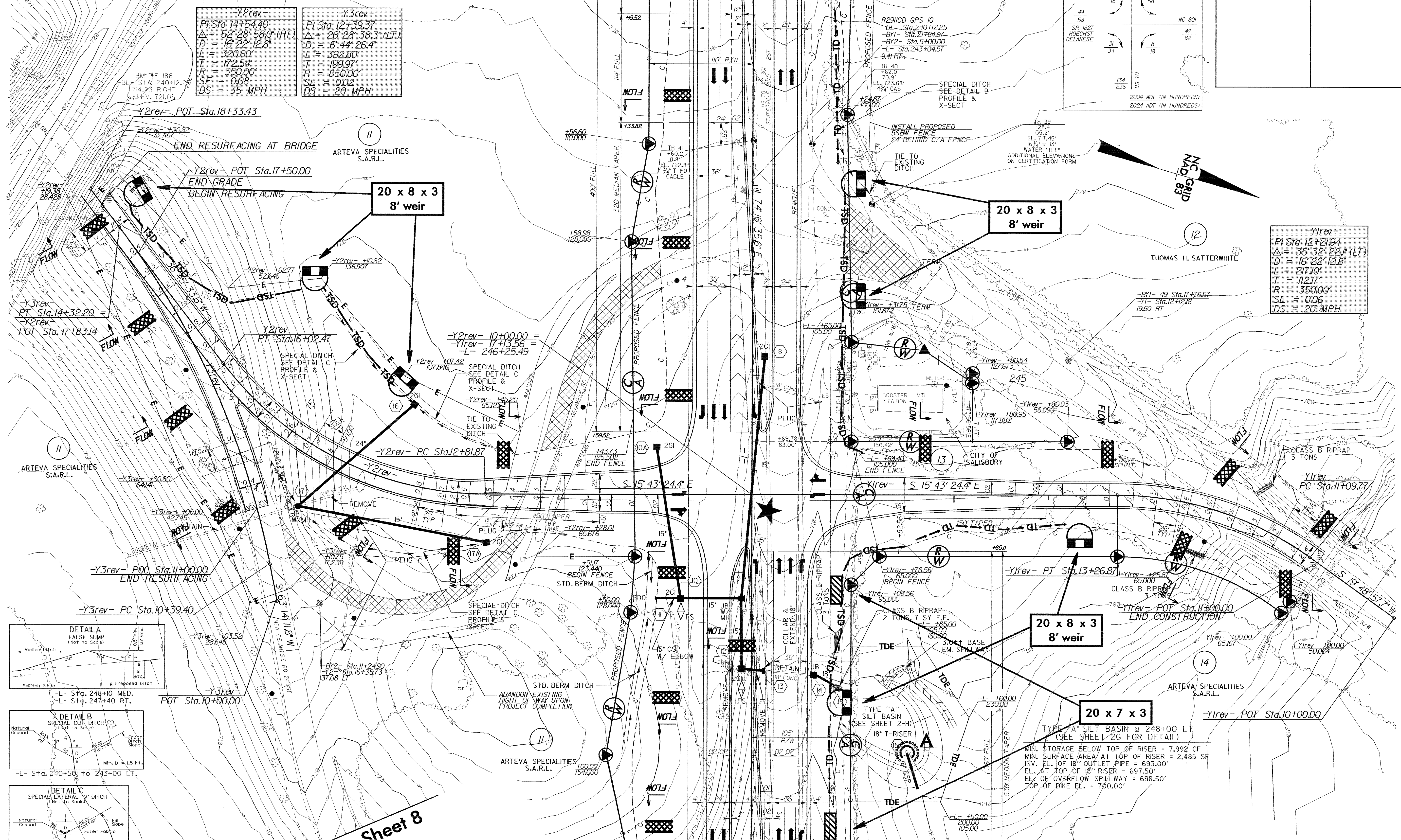
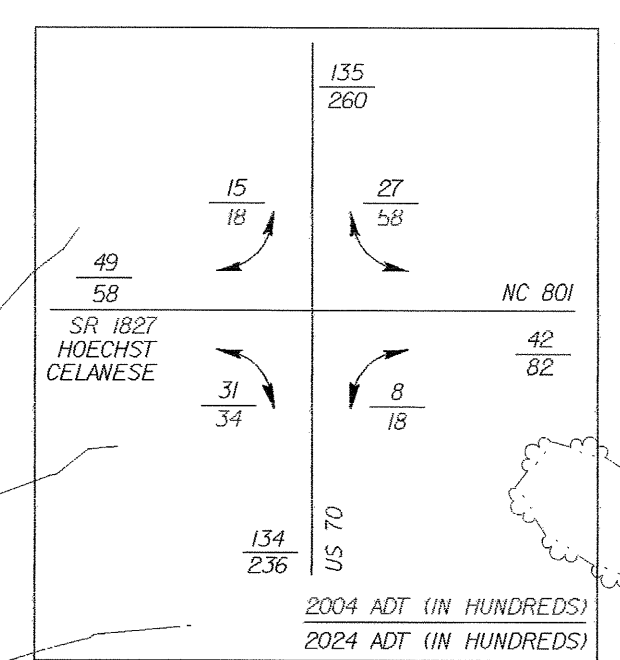


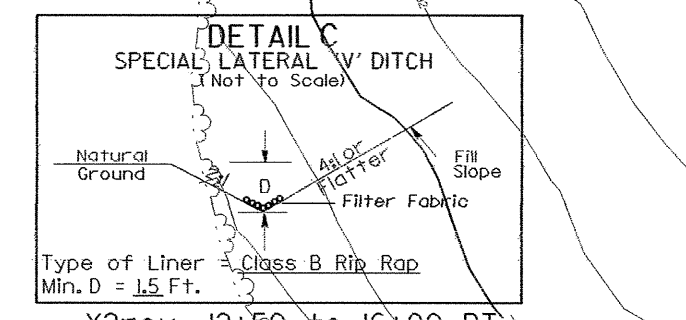
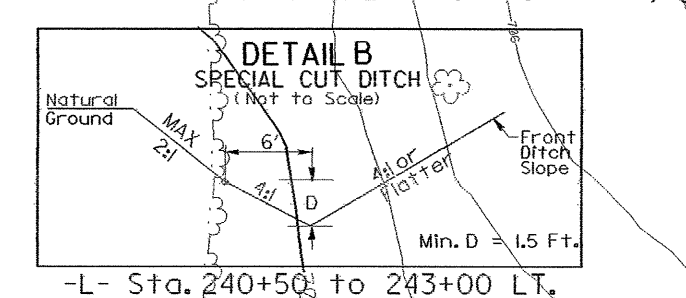
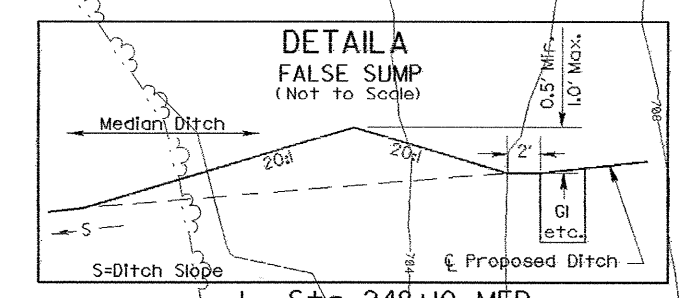
PROJECT REFERENCE NO.		SHEET NO.	
R-2911D		EC-6/CONST.7	
RW SHEET NO.		HYDRAULICS ENGINEER	
ROADWAY DESIGN ENGINEER			

Match Line Sheet 6 -L- Sta. 241+00.00



-Y2rev- PI Sta 14+54.40 Δ = 52° 28' 58.0" (RT) D = 16' 22" 12.8" L = 320.60' T = 172.54' R = 350.00' SE = 0.08 DS = 35 MPH	-Y3rev- PI Sta 12+39.37 Δ = 26° 28' 38.3" (LT) D = 6' 44" 26.4" L = 392.80' T = 199.97' R = 850.00' SE = 0.02 DS = 20 MPH
--	---

-Y1rev- PI Sta 12+21.94 Δ = 35° 32' 22.1" (LT) D = 16' 22" 12.8" L = 217.10' T = 112.17' R = 350.00' SE = 0.06 DS = 20 MPH
--



Match Line Sheet 8

Match Line Sheet 8 -L- Sta. 250+00.00

CLEARING AND GRUBBING EROSION CONTROL FOR CONSTRUCTION SHEET 7

NOTE: PLACE TEMPORARY ROCK SEDIMENT DAMS TYPE-B AND TEMPORARY ROCK SILT CHECKS TYPE-A AT DRAINAGE OUTLETS.

★ PROPOSED SIGNAL
 Note: See Sheet 20 for -L- line profile
 See Sheet 31 for -Y1rev- line profile
 See Sheet 31 for -Y2rev- line profile
 See Sheet 31 for -Y3rev- line profile
 See Sheet 2-F for Y1 & Y2 intersection detail