

PROJECT REFERENCE NO.	SHEET NO.
R-2911D	EC-17/CONST.16
RW SHEET NO.	
ROADWAY DESIGN ENGINEER	HYDRAULICS ENGINEER

20 x 8 x 3  
8' weir

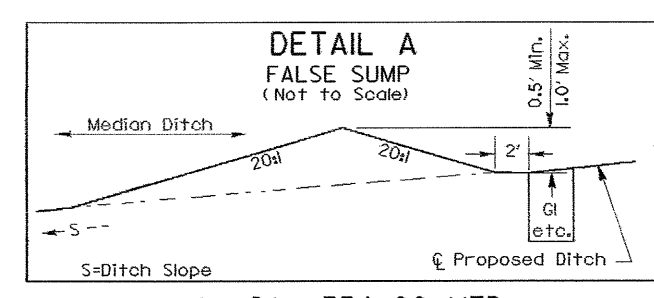
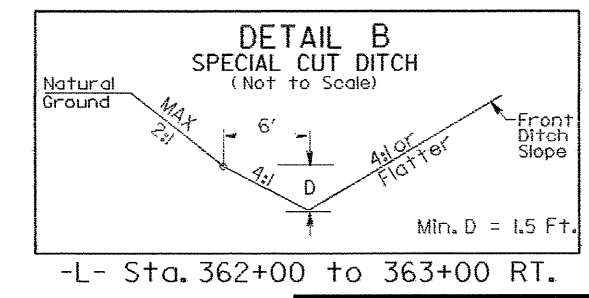
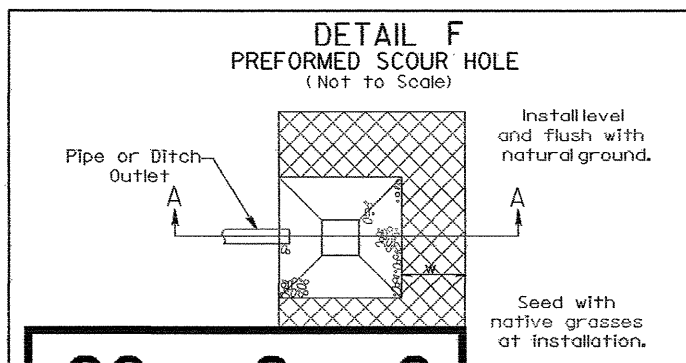
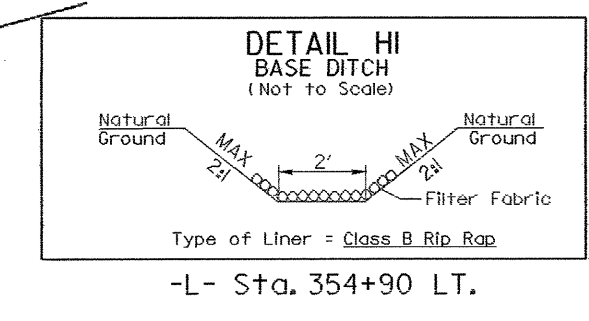
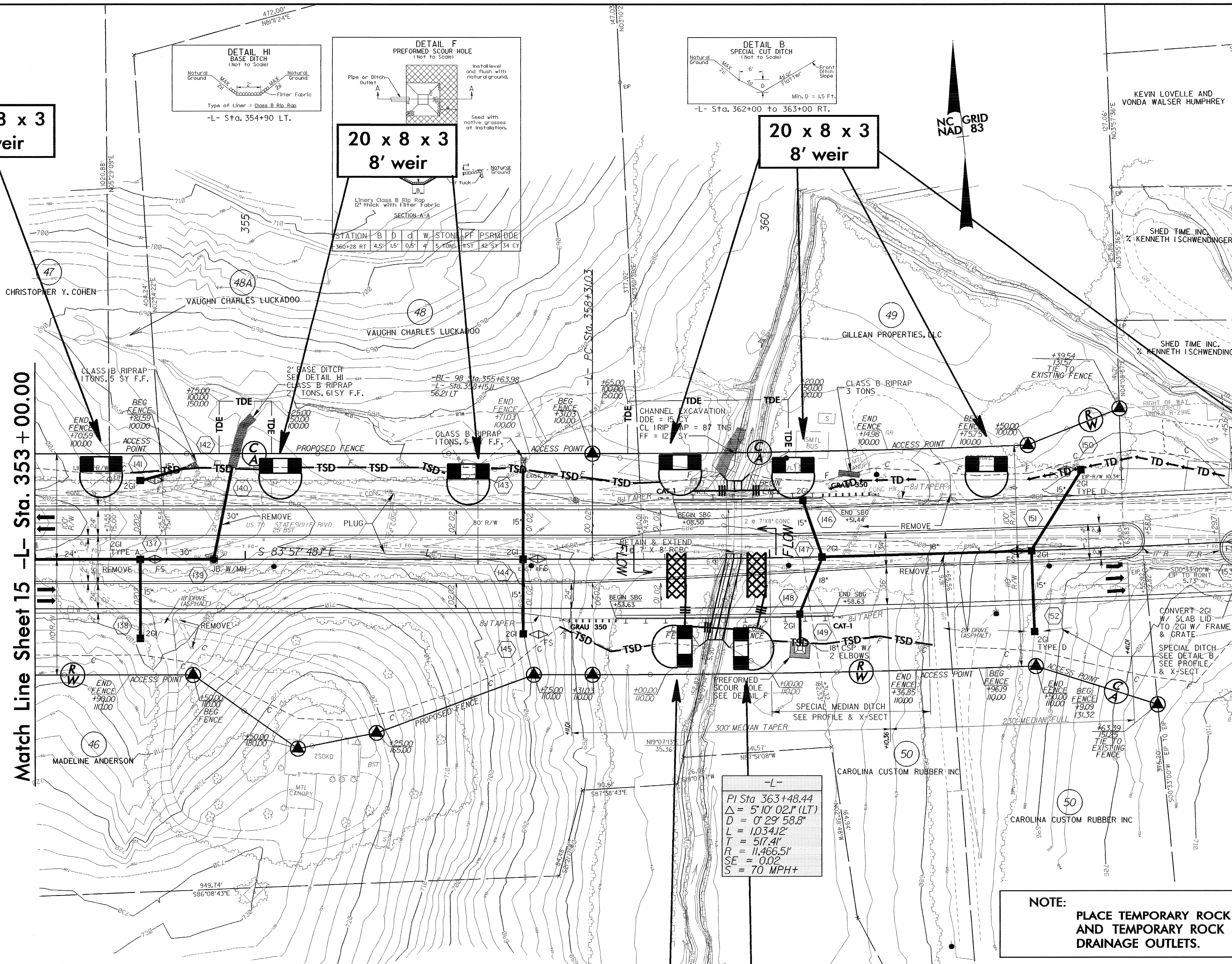
20 x 8 x 3  
8' weir

20 x 8 x 3  
8' weir

20 x 8 x 3  
8' weir

Match Line Sheet 15 -L- Sta. 353+00.00

Match Line Sheet 17 -L- Sta. 365+00.00



- L- Sta. 354+00 MED.
- L- Sta. 357+75 MED.
- L- Sta. 362+50 MED.
- L- Sta. 364+60 MED.
- L- Sta. 354+00 LT.
- L- Sta. 363+00 LT.

-L-  
 PI Sta 363+48.44  
 $\Delta = 5^{\circ}10'02.1$  (LT)  
 $D = 0^{\circ}29'58.8$   
 $L = 1034.12'$   
 $T = 517.41'$   
 $R = 11466.51'$   
 $SE = 0.02$   
 $S = 70$  MPH+

**NOTE:**  
 PLACE TEMPORARY ROCK SEDIMENT DAMS TYPE- B  
 AND TEMPORARY ROCK SILT CHECKS TYPE-A AT  
 DRAINAGE OUTLETS.

**CLEARING AND GRUBBING  
 EROSION CONTROL FOR  
 CONSTRUCTION SHEET 16**

**Note:** See Sheet 29 for -L- line profile  
 See Sheet C-6 to C-13 for Culvert Plans

