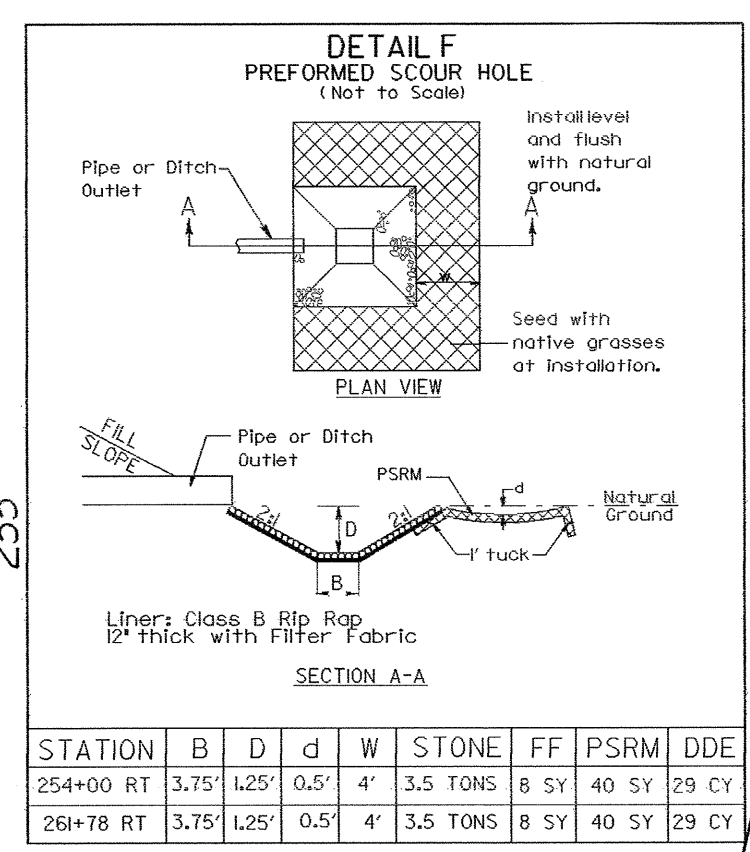
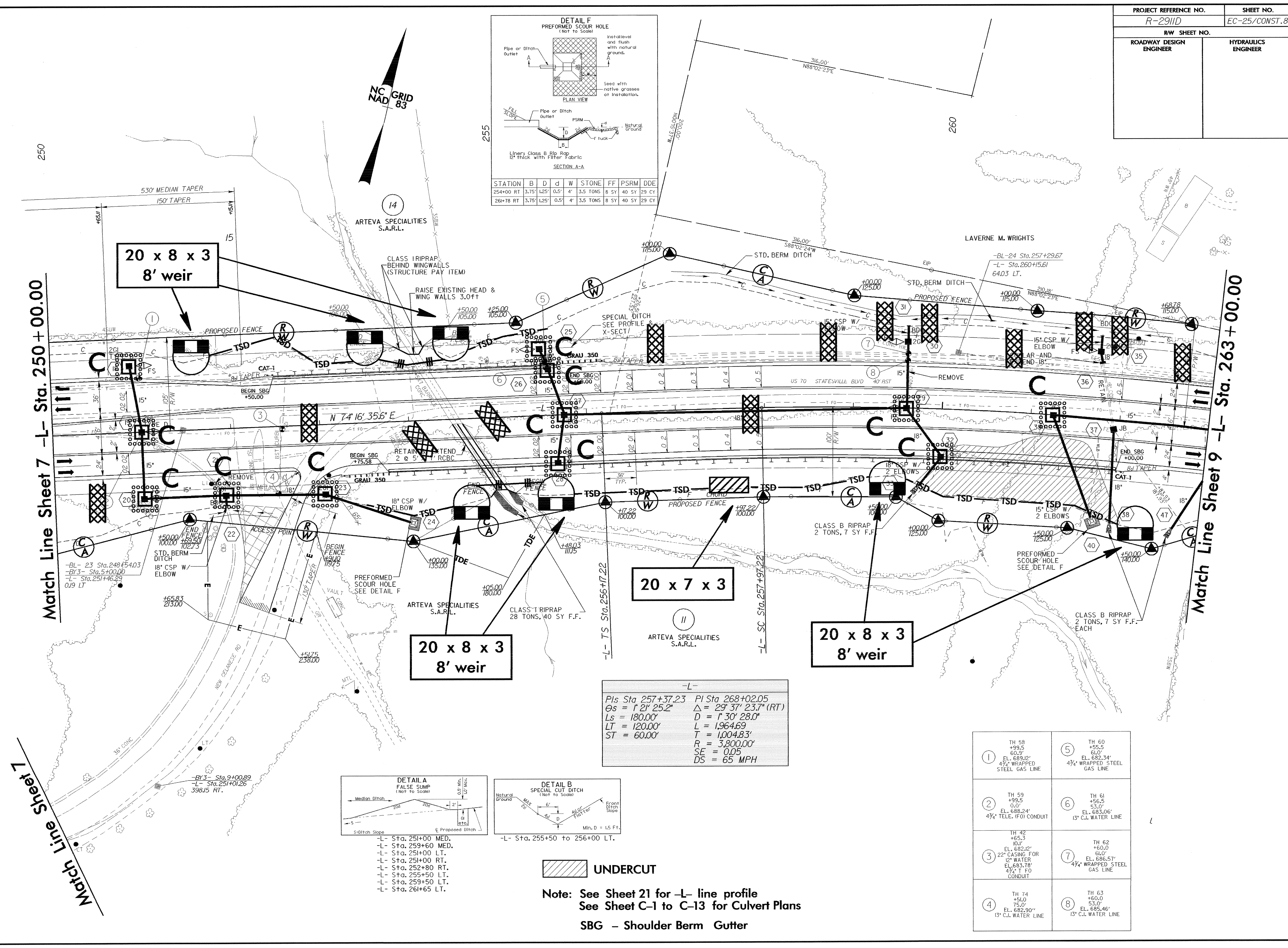


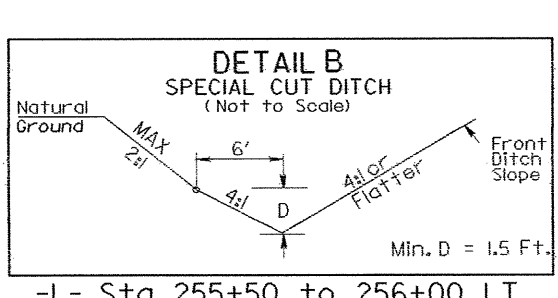
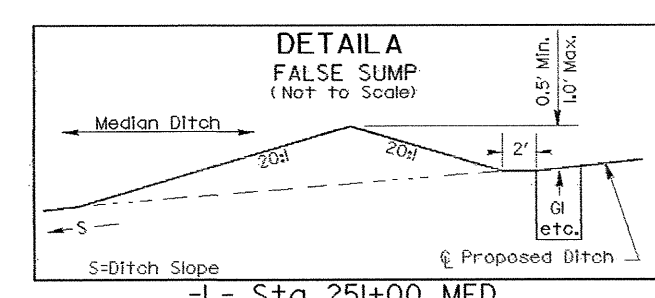
PROJECT REFERENCE NO. R-2911D	SHEET NO. EC-25/CONST. 8
RW SHEET NO.	HYDRAULICS ENGINEER
ROADWAY DESIGN ENGINEER	



STATION	B	D	d	W	STONE	FF	PSRM	DDE
254+00 RT	3.75'	4.25'	0.5'	4'	3.5 TONS	8 SY	40 SY	29 CY
261+78 RT	3.75'	4.25'	0.5'	4'	3.5 TONS	8 SY	40 SY	29 CY



-L-	
PI Sta 257+37.23	PI Sta 268+02.05
Δs = 1' 21' 25.2"	Δ = 29' 37' 23.7" (RT)
Ls = 180.00'	D = 1' 30' 28.0"
LT = 120.00'	L = 1964.69'
ST = 60.00'	T = 1,004.83'
	R = 3,800.00'
	SE = 0.05
	DS = 65 MPH



- L- Sta. 251+00 MED.
- L- Sta. 259+60 MED.
- L- Sta. 251+00 LT.
- L- Sta. 251+00 RT.
- L- Sta. 252+80 RT.
- L- Sta. 255+50 LT.
- L- Sta. 259+50 LT.
- L- Sta. 261+65 LT.

UNDERCUT

Note: See Sheet 21 for -L- line profile
See Sheet C-1 to C-13 for Culvert Plans
SBG - Shoulder Berm Gutter

① TH 58 +99.5 60.3' EL. 689.12' 4 1/2" WRAPPED STEEL GAS LINE	⑤ TH 60 +55.6 61.0' EL. 682.34' 4 1/2" WRAPPED STEEL GAS LINE
② TH 59 +99.5 0.0' EL. 688.24' 4 1/2" TELE. (FO) CONDUIT	⑥ TH 61 +56.5 53.0' EL. 683.06' 13" C.I. WATER LINE
③ TH 42 +65.3 10.1' EL. 682.12' 22" CASING FOR 12" WATER EL. 683.78' 4 1/2" T FO CONDUIT	⑦ TH 62 +60.0 61.0' EL. 686.57' 4 1/2" WRAPPED STEEL GAS LINE
④ TH 74 +51.0 75.0' EL. 682.90" 13" C.I. WATER LINE	⑧ TH 63 +60.0 53.0' EL. 685.46' 13" C.I. WATER LINE