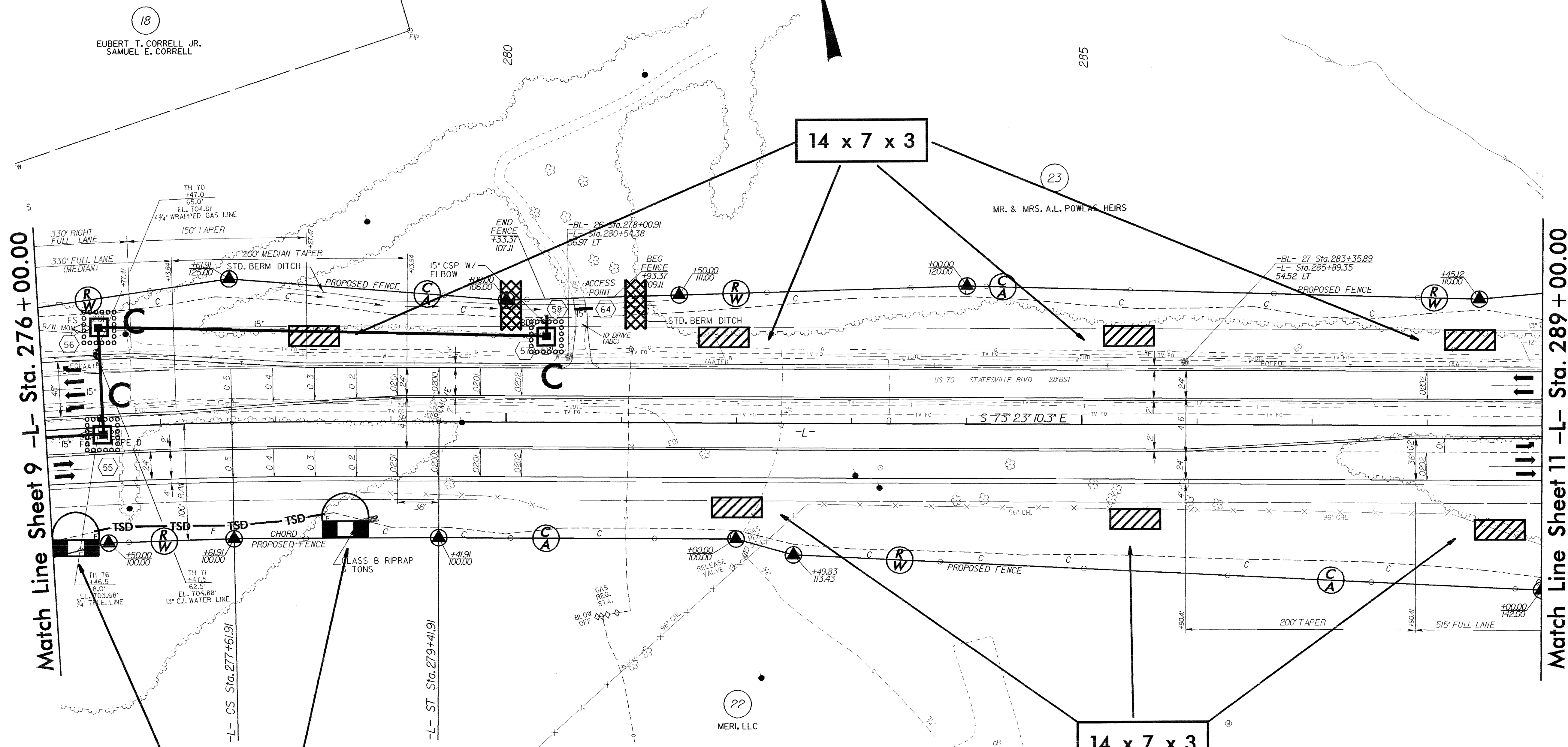


PROJECT REFERENCE NO. R-2911D	SHEET NO. EC-27/CONST.10
RW SHEET NO.	
ROADWAY DESIGN ENGINEER	HYDRAULICS ENGINEER



Match Line Sheet 9 -L- Sta. 276 + 00.00

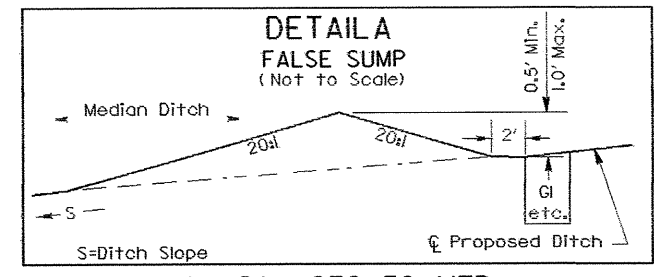
Match Line Sheet 11 -L- Sta. 289 + 00.00

14 x 7 x 3

14 x 7 x 3

20 x 8 x 3
8' weir

PI Sta 268+02.05	PIs Sta 278+21.91
$\Delta = 29^\circ 37' 23.7''$ (RT)	$\Theta s = 1^\circ 21' 25.2''$
$D = 1^\circ 30' 28.0''$	$Ls = 180.00'$
$L = 1,964.69'$	$LT = 120.00'$
$T = 1,004.83'$	$ST = 60.00'$
$R = 3,800.00'$	
$SE = 0.05$	
$DS = 65$ MPH	



-L- Sta. 276+50 MED.
-L- Sta. 276+50 LT.

Note: See Sheet 23 for -L- line profile