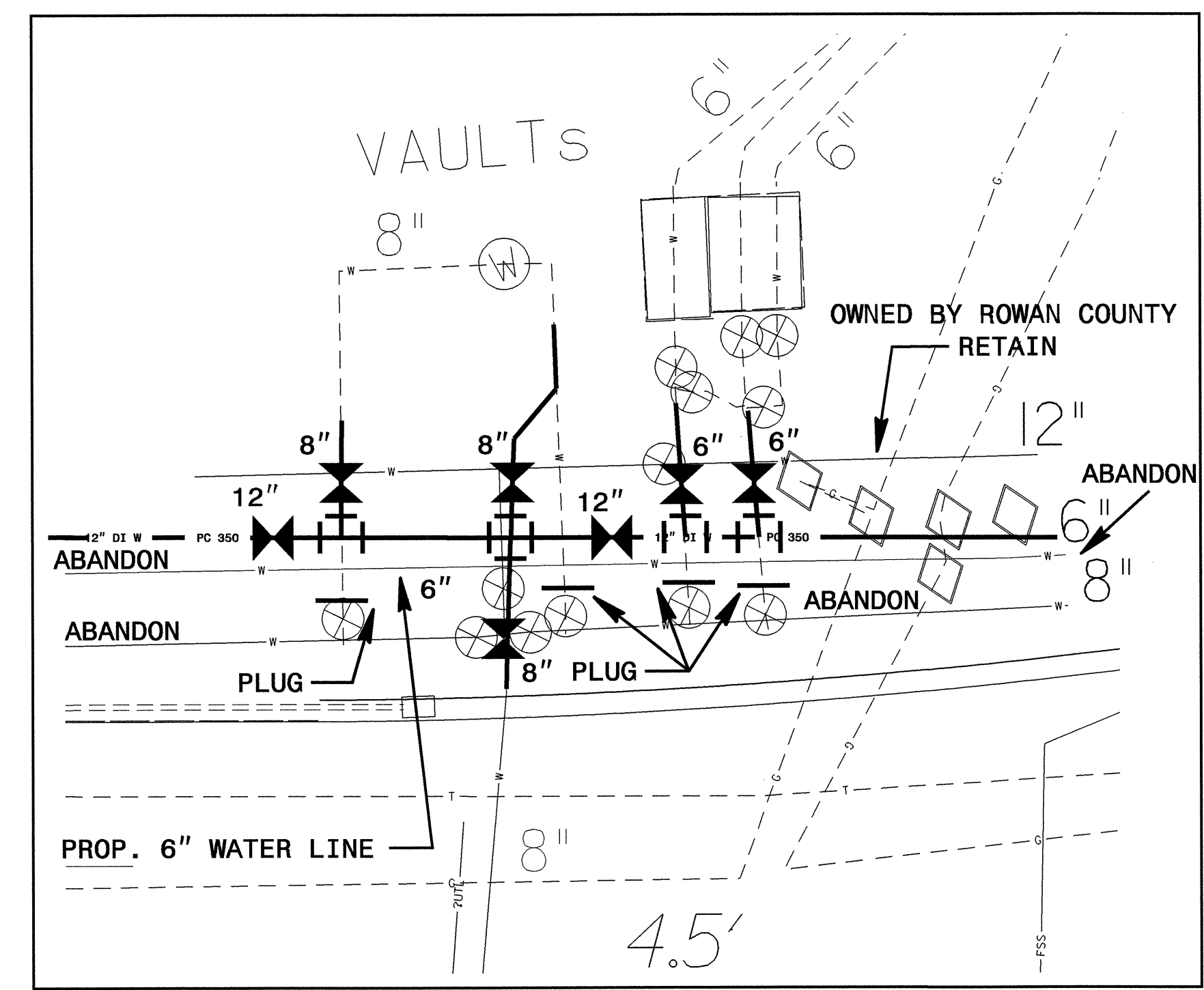


8/17/99

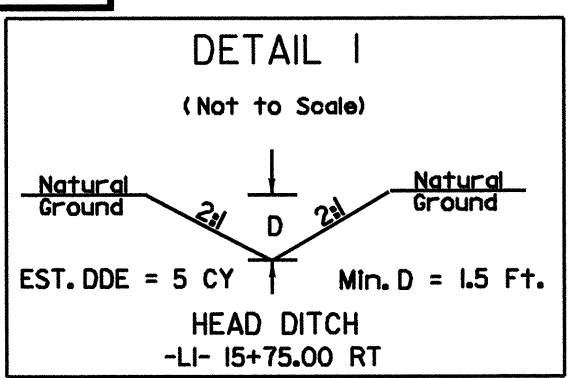
19-AUG-2004 14:39 U:\Projects\2911c-ROY_UC2.DGN
RA\Utility\Drawings\2911c-ROY_UC2.DGN
10/11/04 10:11 AM

PROJECT REFERENCE NO.	SHEET NO.
R-2911C	UC-2
DESIGNED BY: JH	
DRAWN BY: JH	
CHECKED BY: CDB	
APPROVED BY: CDB	
REVISED:	
NORTH CAROLINA DEPARTMENT OF TRANSPORTATION	
DESIGN SERVICES UNIT PHONE: (919) 250-4128 FAX: (919) 250-4119	
UTILITY CONSTRUCTION PLANS ONLY	

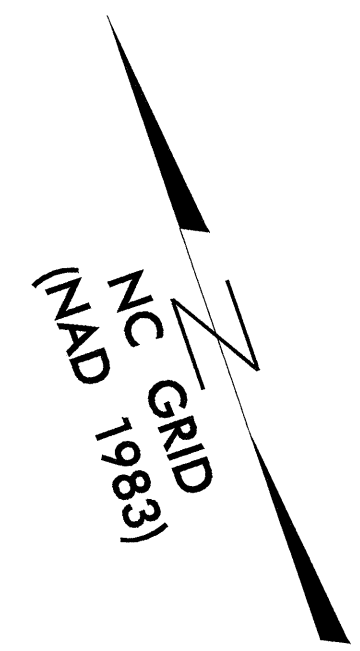
UTILITY CONSTRUCTION



THE EXISTING 12" WATER LINE IS OWNED BY ROWAN COUNTY
 THE EXISTING 8" AND 6" WATER LINES ARE OWNED BY THE TOWN OF CLEVELAND
 THE SEWER LINES ARE OWNED BY THE TOWN OF CLEVELAND

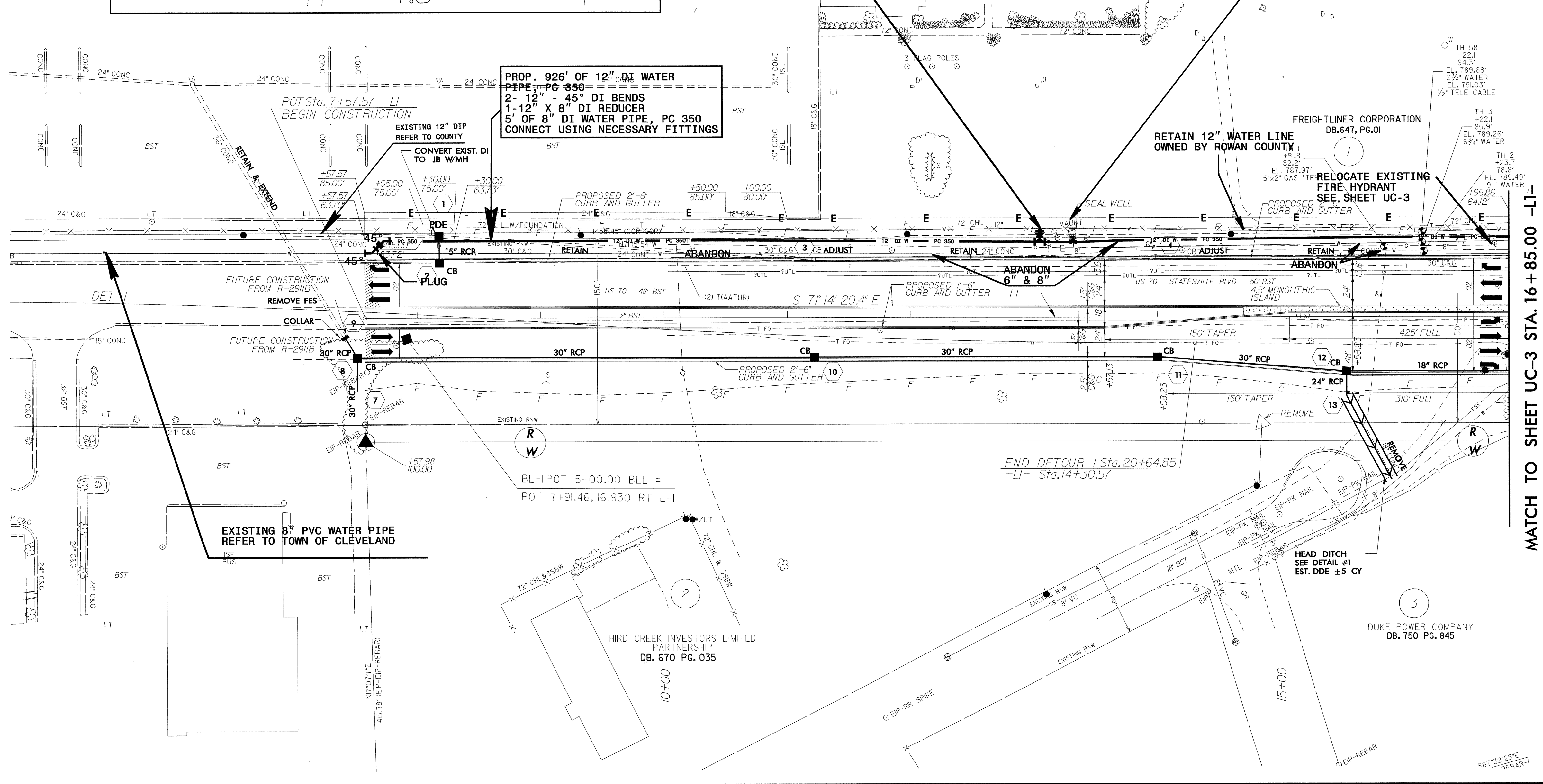


NOTE:
 TEMPORARY BYPASS PUMPING FOR INSTALLING DI SEWER PIPE IN PLACE WILL BE REQUIRED



PROP. 8' OF 6" DI WATER PIPE PC 350
 1- 12" X 6" DI TEE
 1- 6" GATE VALVE AND VALVE BOX, 200# WP
 1- RELOCATE EXISTING FIRE HYDRANT

PROP. 1-12" X 2" TAPPING SADDLE
 1- 2" CORP. STOP
 5' OF 2" PE WATER TUBING, SDR 9,
 200# WP
 CONNECT USING NECESSARY FITTINGS



MATCH TO SHEET UC-3 STA. 16+85.00 -LI-

8/17/99